

**U. S. Public Land Corner
Maintenance**

71

Corner: SW Sec. 17, T19N-R4W

21904180000

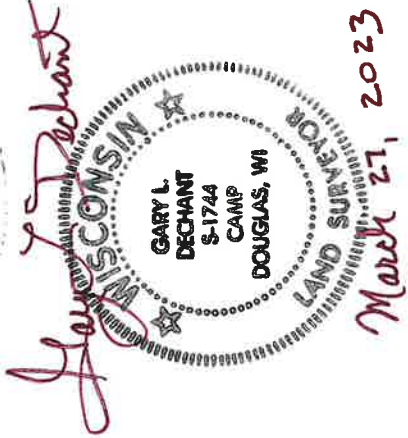
Date	Crew	Monument type
March 27, 2023	Zachariah P. Dechant Gary L. Dechant	Found Harrison, flush with ground, set sign 1' east, steel fence post 1' NW

References:

- 1) Set 5/8"x24" round rebar, 4' SE of 13" White Oak, 5' west of downed fence
- 2) Existing 3/4" round iron bar
- 3) Set 5/8"x24" round rebar, 4' NE of 7" Red Pine in plantation
- 4) Existing 3/4" round iron bar

Bearing	Distance
N9W	22.26'
North	14.48"
S39W	37.66'
West	32.44'

Compass bearings
Trees double blazed



I, William C. Jung, do hereby certify that on the 20th day of December 1982, I found evidence of the Southwest corner of Section 17, T 19 N, R 4 W Fourth Principal Meridian, and I re-established said corner according to the Wisconsin Statutes as shown and described hereon.

Dated this 25th day of Jan. 1983.

William C. Jung

Deputy County Surveyor
Title

History of corner establishment since Original Government Survey

In August of 1970, Duane Marten surveyed out Section 17 while conducting the survey for his plat of "Big Creek Valley". He set a 3/4" iron bar at the occupied fence corner at the SW of Section 17. At this corner he found a fence to the North and to the West.

Description of corner evidence found:

I could not find Marten's iron bar at the corner. I accepted the old occupied fence corner as the best available evidence of the original government corner.

**See Reverse Side
For Maintenance**

Approved: **HARLEY A. SIME**
MONROE CO. SURVEYOR

COUNTY SURVEYOR FORM NO. 1

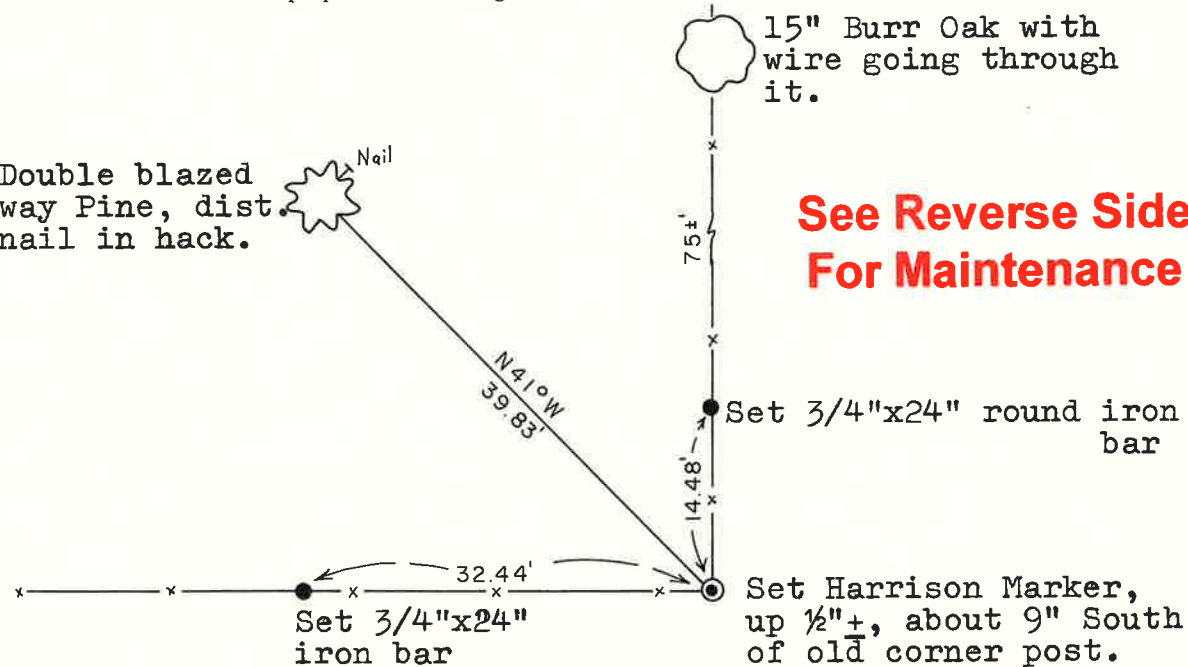
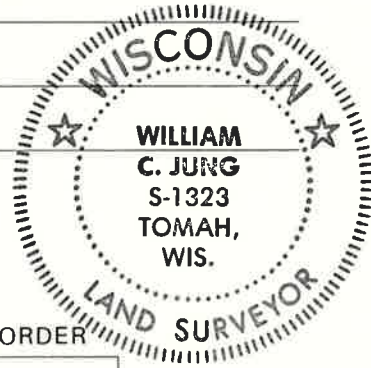
Description of corner and witness monuments, references and accessories used to perpetuate the original or re-established location of this corner:

Witnesses to corner location:

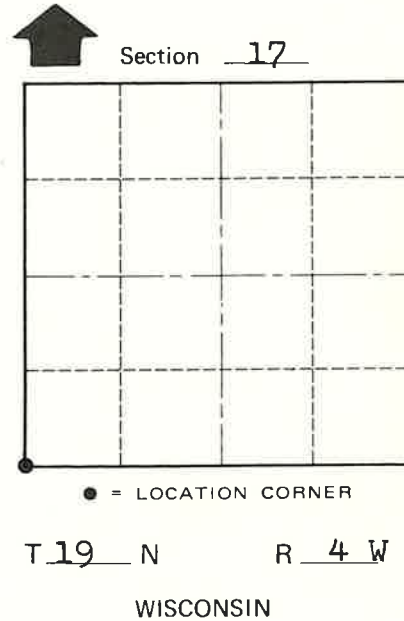
William Jung

Bryan Meyer

6" Double blazed Norway Pine, dist. to nail in hack.



**See Reverse Side
For Maintenance**



SURVEY CONTROL ORDER

Horizontal	_____
Vertical	_____

WISCONSIN COORDINATE SYSTEM

Corner	East (X)	North (Y)	Elevation (Z)	Zone
Control Sta. Name				

~~City/Village of~~ Town of Little Falls
County of Monroe