

# U. S. Public Land Corner Maintenance

# 67

Corner: SE Sec. 16, T19N-R4W

21904160000

Date	Crew	Monument type
March 27, 2023	Zachariah P. Dechant Gary L. Dechant	Found Harrison as <u>"witness" corner</u> at fence corner, Found nail between stones leaning, replaced nail with 5/8"x24" round rebar, 0.48' SW of Harrison witness marker. <u>5/8" rebar is the section corner</u> . Set sign 1' east, 35' west of trail

### References:

- 1) Set 5/8"x24" round rebar, 5' SW of 15" White Oak (1986 BT)
- 2) Set 5/8"x24" round rebar, 5' NW of 10" White Oak west of trail
- 3) Set 5/8"x24" round rebar, 4' NE of 15" White Oak (1986 BT)
- 4) Set 5/8"x24" round rebar, 4' SE of 4" White Oak

Compass bearings

Trees double blazed

Set stone over rebars 2, 3, & 4.



I, Bryan H. Meyer, do hereby certify that on the 26<sup>th</sup> day of September 1986, I found (evidence) ~~(no evidence)~~ of the Southeast corner of Section 16, T 19 N, R 4 W Fourth Principal Meridian, and I re-established said corner according to the Wisconsin Statutes as shown and described hereon.

Dated this 15<sup>th</sup> day of Dec. 1986.

Bryan H. Meyer  
Deputy County Surveyor  
Title

History of corner establishment since Original Government Survey

Webster Kenyon was here in April of 1893 and set 2 stones for the corner. Fred Holden was here November of 1903 and calls for a "stake". Mr. Holden was also here in June of 1908 and November of 1911.

Description of corner evidence found:

I found 2 stones in the shape of a "T" at the intersection of fences from North, West and South. I accepted the intersection of the 2 stones as the corner.



**See Reverse Side For Maintenance**

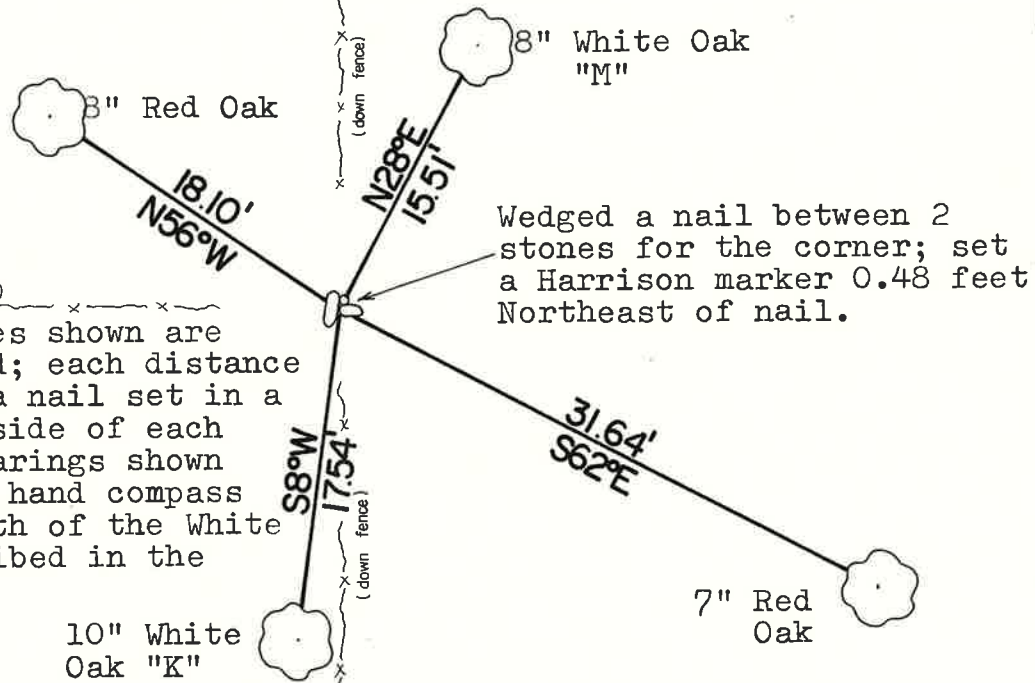
COUNTY SURVEYOR FORM NO. 1

Description of corner and witness monuments, references and accessories used to perpetuate the original or re-established location of this corner:

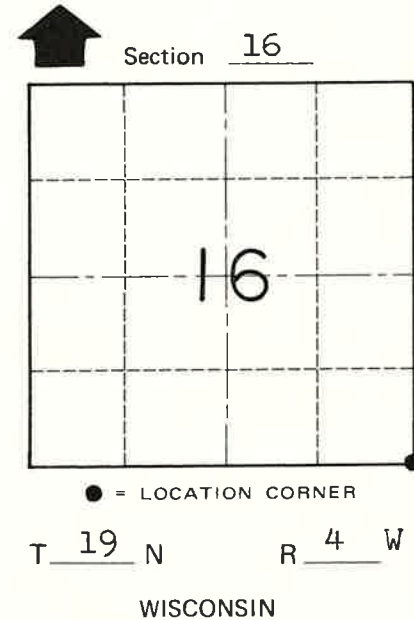
Crew: Meyer, Kenworthy  
Date: September 26, 1986  
Weather: Sunny, Humid, 88°+.  
Witnesses to corner location:

Bryan Meyer

"Rory" Kenworthy



The four trees shown are double blazed; each distance shown is to a nail set in a hack in the side of each tree. The bearings shown are magnetic hand compass bearings. Both of the White Oaks are scribed in the upper blaze.



SURVEY CONTROL ORDER

Horizontal	_____
Vertical	_____

WISCONSIN COORDINATE SYSTEM

Corner	East (X)	North (Y)	Elevation (Z)	Zone
Control Sta. Name				

City, Village or Town of Little Falls  
County of Monroe