

U. S. Public Land Corner Maintenance

91

Corner: NE Sec. 30, T16N-R1E

41601190000

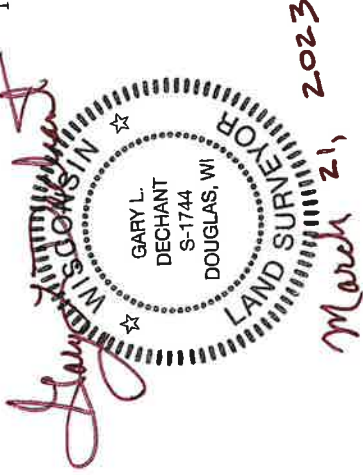
<u>Date</u>	<u>Crew</u>	<u>Monument type</u>
March 15, 2023	Al Hoff Gary L. Dechant	Found Harrison lying flat next to corner post. Found all five 1984 bearing trees and reset corner from recorded distances from nails in two bearing trees. Harrison was frozen in ground and broke it in several pieces in the attempt to reset it. Set 1 1/4"x3' round iron bar at corner. Set stones and broken pieces of Harrison around the iron bar. 2' west and 4' north of newer fence corner, Approx. 130' west of gully.

References:

- 1) Set 5/8"x24" round rebar
- 2) Set 5/8"x24" round rebar, in line with 1984 BT- now 14" Hickory
- 3) Set 5/8"x24" round rebar, in line with 1984 BT-now 40" Black Oak
- 4) Set 5/8"x24" round rebar

Compass bearings

<u>Bearing</u>	<u>Distance</u>
East	12.93'
S26E	47.27'
S26W	25.85'
N40W	23.02'



I, Gary L. Dechant, do hereby certify that on the 11th day of December 19 84, I found (evidence) (~~no evidence~~) of the NE corner of Section 30, T16 N, R1 E Fourth Principal Meridian, and I re-established said corner according to the Wisconsin Statutes as shown and described hereon.

Dated this 12th day of Dec. 19 84.

Gary L. Dechant

Registered Land Surveyor, 1744
Title

History of corner establishment since Original Government Survey

No known history since the Original Government Survey.

Description of corner evidence found:

Found Original Burr Oak Bearing tree and set the corner at the given bearing and distance of the original government survey from the tree. Fits existing fence corner very well.

COUNTY SURVEYOR FORM NO. 1

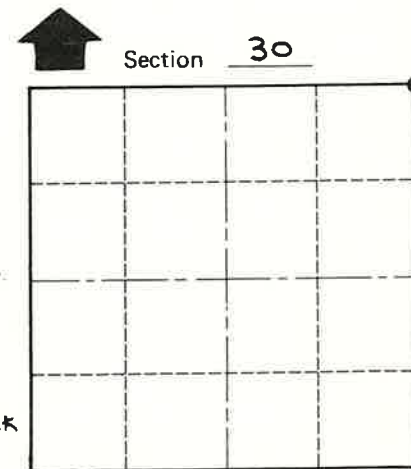
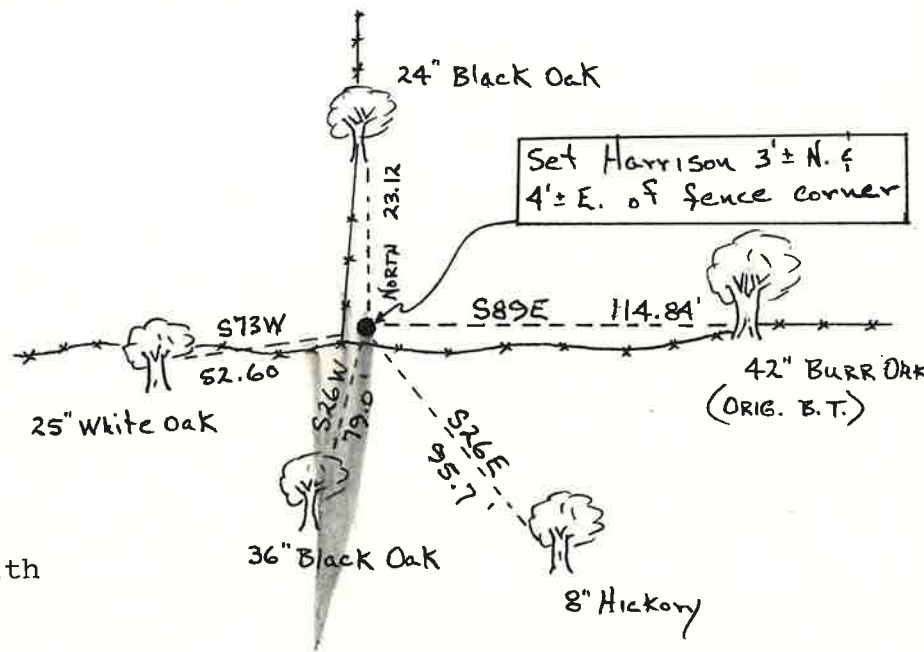
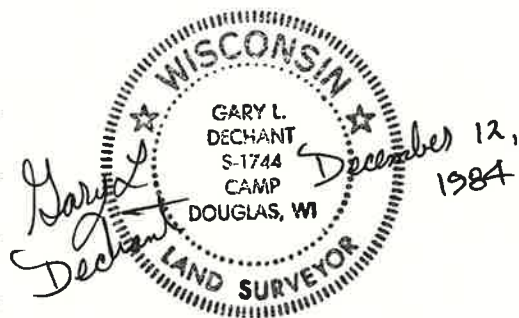
Description of corner and witness monuments, references and accessories used to perpetuate the original or re-established location of this corner:

Witnesses to corner location:

Larry Feddersen, S-1226

Dan Rattle

Gary L. Dechant



● = LOCATION CORNER

T 16 N R 1 E
WISCONSIN

(All trees double blazed with N&C's set)

SURVEY CONTROL ORDER

Horizontal	_____
Vertical	_____

WISCONSIN COORDINATE SYSTEM

Corner	East (X)	North (Y)	Elevation (Z)	Zone
Control Sta. Name				

City, Village or Town Clifton
County of Monroe