

CERTIFICATE

CERTIFIED LAND CORNER

41901070000

No. 51
Page 2

I, Gary L. Dechant, do hereby certify that on the 21st day of August 2003, I found (evidence) (~~no evidence~~) of the NW corner of Section 17, T 19 N, R 1 E Fourth Principal Meridian, and I re-established said corner according to the Wisconsin Statutes as shown and described hereon.

Dated this 27th day of August 2003.

Gary L. Dechant

Registered Surveyor 1744
Title

History of corner establishment since Original Government Survey

Kennedy was near this corner but did not monument it. Road records call for centerline of road being on the section line.

G. A. Sime set this corner at road intersection in 1986, 1 1/4" iron bar.

Description of corner evidence found:

Sime's 1 1/4" iron bar was destroyed from road construction and culvert he used for reference replaced. Reset corner from remaining references, 10" White Pine, 52.12' to SE and center of Telephone Ped, 67.47' to NE. Tele. ped. leaning slightly NE. Obtained new references.

Description of corner and witness monuments, references and accessories used to perpetuate the original or re-established location of this corner:

Witnesses to corner location:

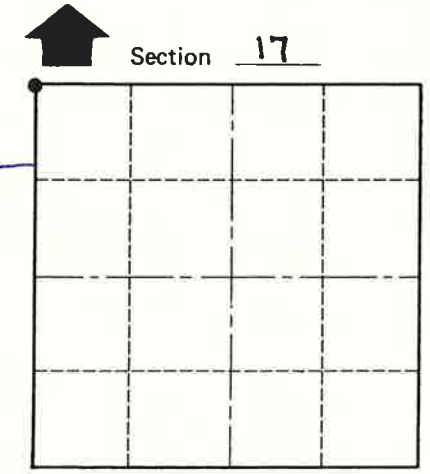
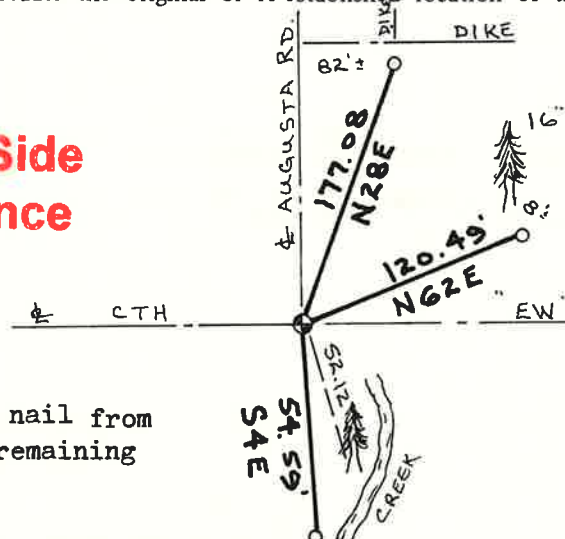
Zachariah P. Dechant

Gary L. Dechant

See Reverse Side For Maintenance

Set mag nail from Sime's remaining ties.

Set 1"O.D.x3' iron pipe on west creek bank



O = LOCATION CORNER

T 19 N R 1 E

WISCONSIN

o = Set 1"O.D.x24" iron pipe

SURVEY CONTROL ORDER

Horizontal	_____
Vertical	_____

WISCONSIN COORDINATE SYSTEM

Corner	East (X)	North (Y)	Elevation (Z)	Zone
Control Sta. Name				

City, Village or Town SCOTT

County of MONROE

COUNTY SURVEYOR FORM NO. 1

4190107000

I, Garold A. Sime, do hereby certify that on the 18th day of December 19 86, I found (evidence) ~~no evidence~~ of the SE corner of Section 7, T19 N, R 1 E Fourth Principal Meridian, and I re-established said corner according to the Wisconsin Statutes as shown and described hereon.

Dated this 29th day of Dec. 1986.

Garold A. Sime

Deputy County Surveyor
Title

History of corner establishment since Original Government Survey

Kennedy was near this corner but does not actually locate same. He calls for the road north as being close to corner. The Town Road records call for the centerline of the road being on the section line.

Description of corner evidence found:

I established this corner at the intersection of the centerlines of C.T.H. "E" and 29th Ave. as best available evidence. This location fits Kennedy's distance to the east and to the south fairly well

COUNTY SURVEYOR FORM NO. 1

Description of corner and witness monuments, references and accessories used to perpetuate the original or re-established location of this corner:

Set 1 1/4" x 15" round iron bar at corner

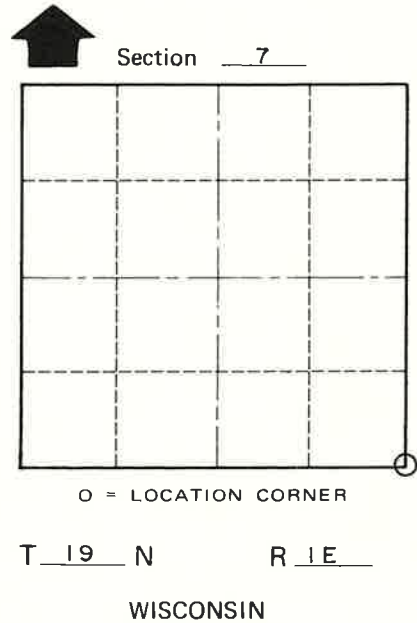
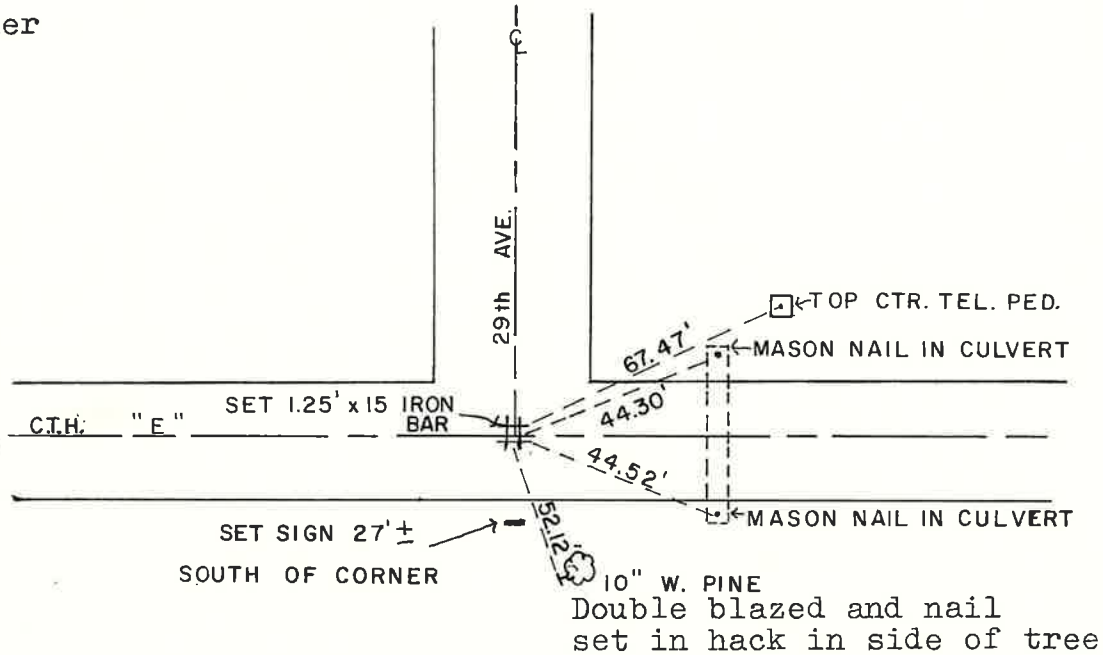
Witnesses to corner location:

Garold A. Sime, R.L.S.

Eric Jensen

Dallas Wilhite

John Kenworthy



SURVEY CONTROL ORDER

Horizontal	_____
Vertical	_____

WISCONSIN COORDINATE SYSTEM

Corner	East (X)	North (Y)	Elevation (Z)	Zone
Control Sta. Name				

~~City or Town~~ or Town Scott

County of Monroe