

# U. S. Public Land Corner Maintenance

# 90

Corner: S1/4 Sec. 20, T19N-R1E

41901200020

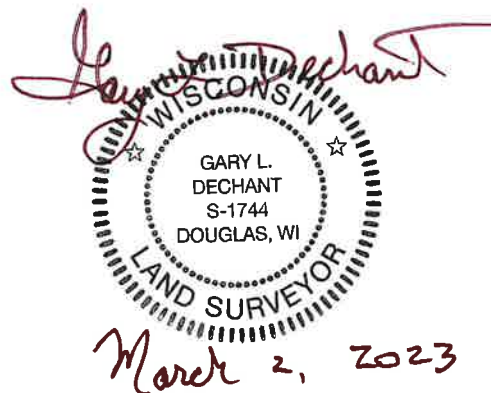
<u>Date</u>	<u>Crew</u>	<u>Monument type</u>
February 15, 2023	Zachariah P. Dechant Gary L. Dechant	Stone (+) in center of Buckley Ave, Nail and caps 2' north and 2' east, all 1980 reference markers gone.

### References:

	<u>Bearing</u>	<u>Distance</u>
1) Set 5/8"x24" round rebar 4' SW of 12" White Pine	N19E	54.98'
2) Set 5/8"x24" round rebar 5' NW of 14" Red Pine	S23E	43.67'
3) Set 5/8"x24" round rebar 6' NE of 12" White Pine	S19W	81.49'
4) Set 5/8"x24" round rebar 6' SE of 7" White Pine	N23W	51.57'

Compass bearings

Reference markers set on straight lines with S1/4 corner



I, William C. Jung, do hereby certify that on the eighteenth day of June 1980, I found (evidence) (redacted) of the South 1/4 corner of Section 20, T 19 N, R 1 E Fourth Principal Meridian, and I re-established said corner according to the Wisconsin Statutes as shown and described hereon.

Dated this 27th day of Feb. 1981.

William C. Jung

William C. Jung - R.L.S. 1323  
Title

History of corner establishment since Original Government Survey

Fred Holden set a stone at this corner in June of 1902. Kennedy found this stone in his survey of the late 1930's. Bergman also used this corner in his survey of July, 1954.

Description of corner evidence found:

Found stone with cross, down 11". Set 11/16"x24" round iron bar on Northwest side of stone as witness. Also set nails and caps 2 feet North and East of stone.

COUNTY SURVEYOR FORM NO. 1

Description of corner and witness monuments, references and accessories used to perpetuate the original or re-established location of this corner:

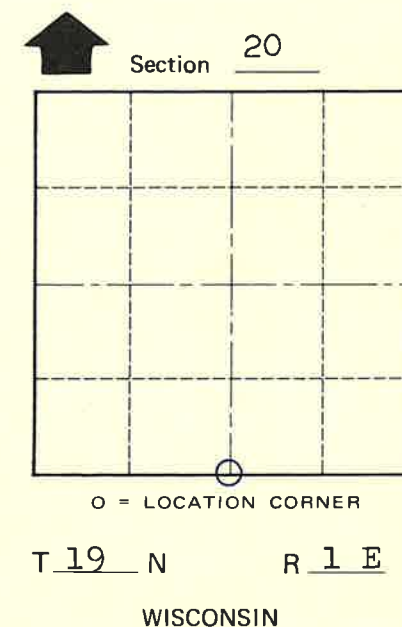
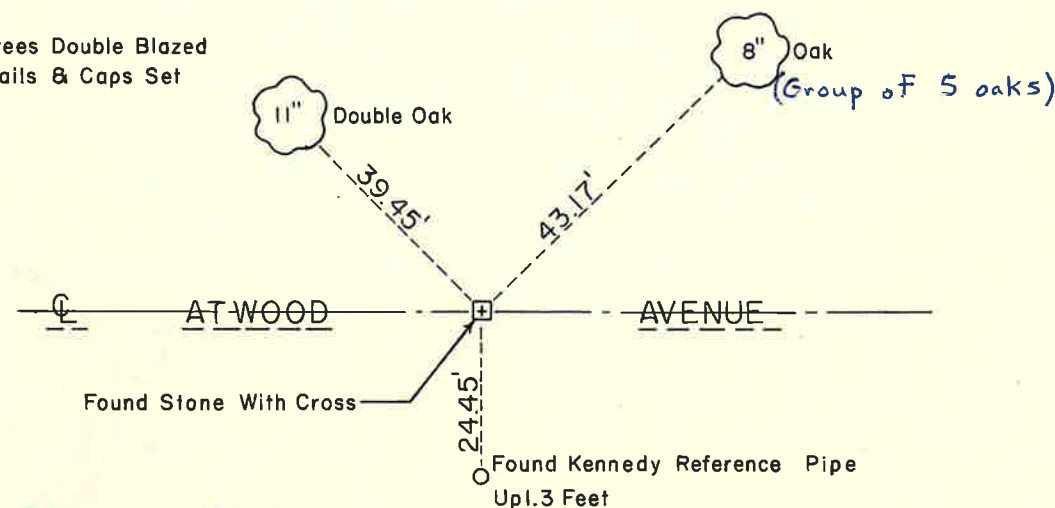
Witnesses to corner location:

Bill Jung

Chuck Dade



NOTE: Both Trees Double Blazed With Nails & Caps Set



See Reverse Side For Maintenance

Approved: **HARLEY A. SIME**  
**MONROE CO. SURVEYOR**

SURVEY CONTROL ORDER

Horizontal	_____
Vertical	_____

WISCONSIN COORDINATE SYSTEM

Corner	East (X)	North (Y)	Elevation (Z)	Zone
Control Sta. Name				

Scott Town of Scott  
County of Monroe  
Wisconsin