

Public Involvement Handout

T of La Grange – T of Byron Forbes Road to CTH N

CTH ET, Monroe County
Project ID: 7373-00-04

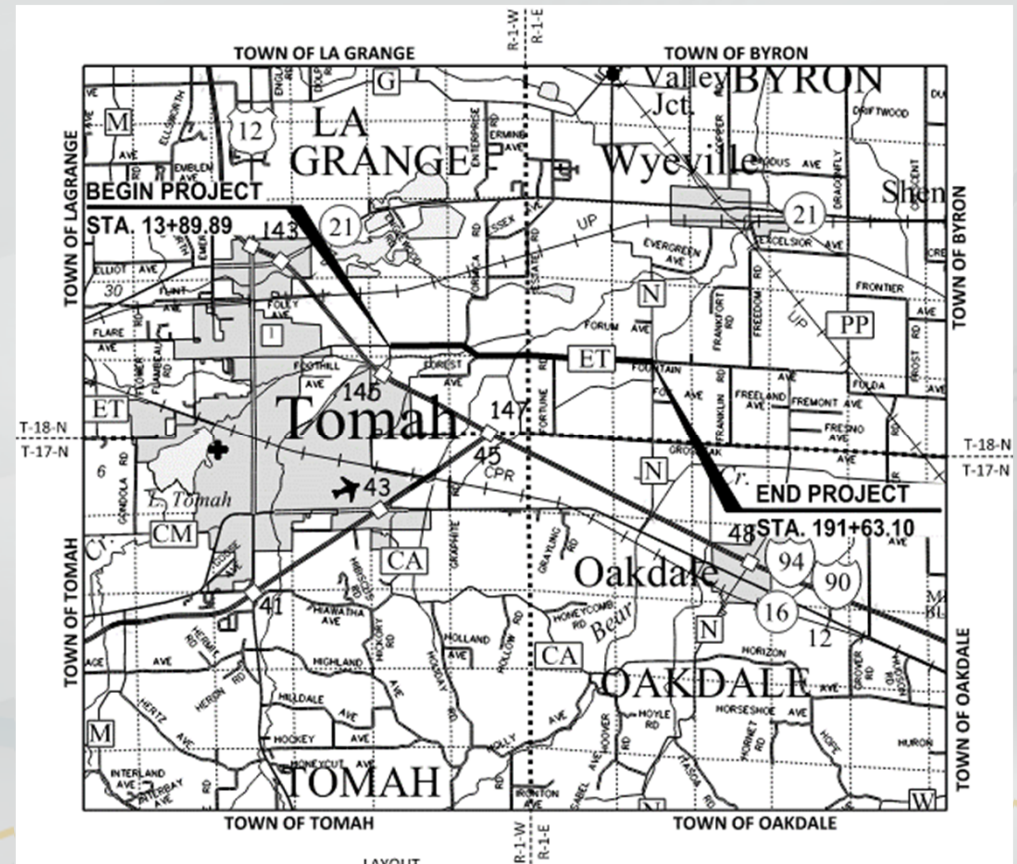
February 21, 2023



Existing Conditions

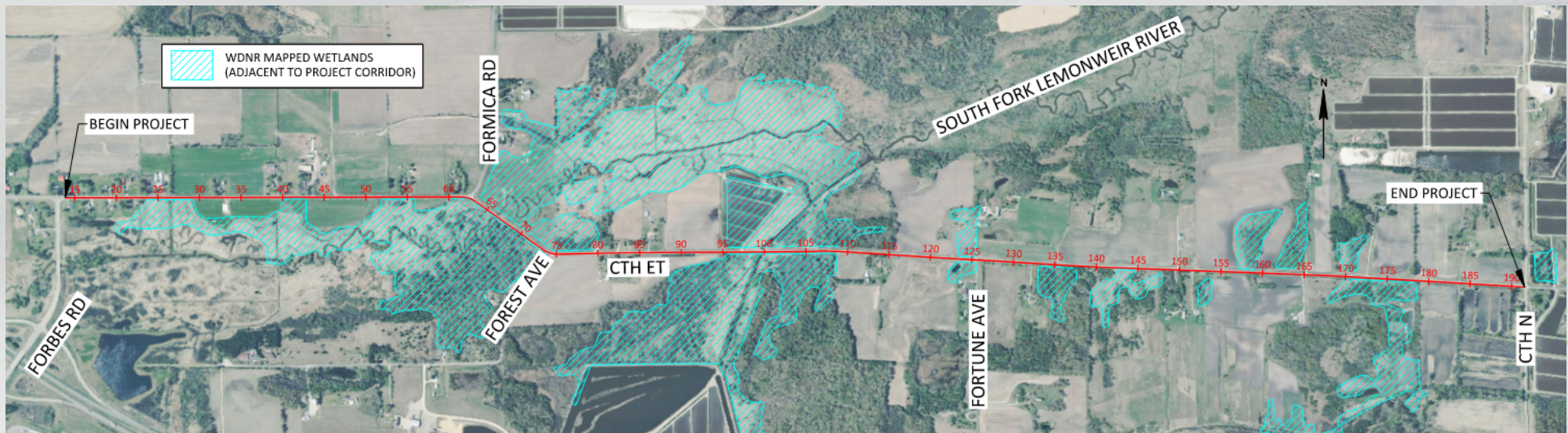
CTH ET Project Termini: Forbes Road to CTH N

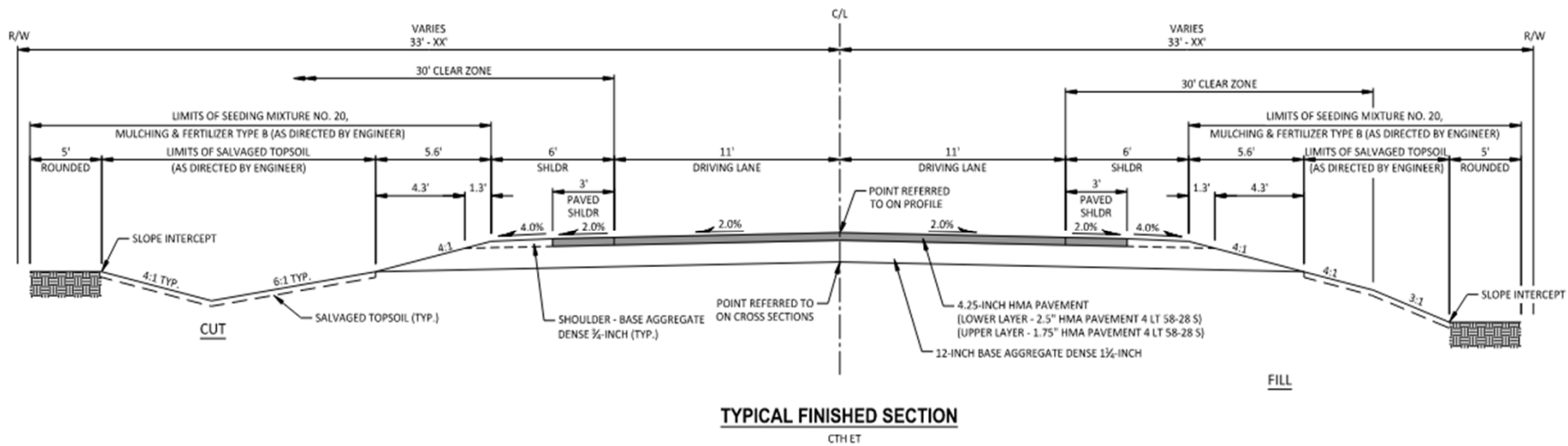
- Project Length = 3.36 miles
- 10'-11' Driving Lanes
- 2'-3' Shoulders (0'-1' Paved)
- 2,390 Vehicles per Day (ADT - 2022) (Forbes Road – Formica Road)
- 740 Vehicles per Day (ADT – 2022) (Formica Road – CTH N)
- 10% Truck Traffic
- Major Collector
- 45 MPH Posted (Sta.13+89.89 – Sta. 28+50)
- 55 MPH Statutory Speed Limit (Sta. 28+50 – Sta. 191+63.10)
- Sections 25, 26 and 36, T18N, R01W, Town of La Grange and Sections 29, 30, 31, and 32, T18N, R01E, Town of Byron



Need for Project

- Poor Pavement Condition
- Narrow Roadway with Minimal Shoulders
- Inadequate roadside grading and vehicle recovery areas
- Inadequate Intersection Sight Distance (ISD) along CTH ET and Sideroads
- Inadequate Drainage Including Insufficient Ditching





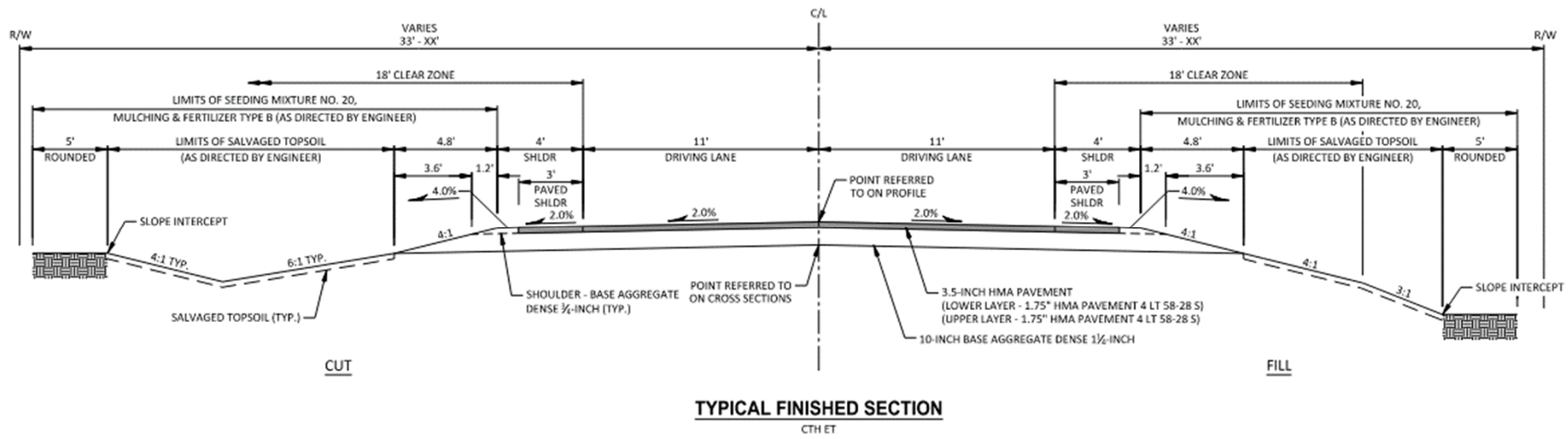
CTH ET Segment 1: Forbes Rd – Formica Rd

Proposed Design

- Design Class C4
- Posted Speed: 45 MPH (Sta. 13+89.89 – Sta. 28+80)
- Statutory Speed: 55 MPH (Sta. 28+80 – Sta. 63+50)
- 3,700 Vehicles per Day (ADT – 2044)
- 60 MPH Design Speed

Typical Section

- 11' Driving Lanes
- 6' Shoulders (3' Paved)
- Pavement Structure
 - 4.25" Asphalt
 - 12" Base Aggregate Dense 1 ¼-Inch



CTH ET Segment 2: Formica Rd – CTH N

Proposed Design

- Design Class C2
- 770 Vehicles per Day (ADT – 2044)
- Statutory Speed: 55 MPH
- 50 MPH Design Speed

Typical Section

- 11' Driving Lanes
- 4' Shoulders (3' Paved)
- Pavement Structure
 - 3.5" Asphalt
 - 10" Base Aggregate Dense 1 1/4-Inch



Alternate Route Map

- CTH ET will be Closed to “Thru Traffic.”
- Access will be Maintained to Local Property Owners Through Construction
- Alternate Route: CTH ET – USH 12 – STH 21 – CTH N (Approx. 10.2 miles)
- Project Duration = Approximately 6 Months of Calendar Time
- 2024 Construction

Project Schedule

Task	Description/Objective	Anticipated Date
Pavement Design Report		December 13, 2022
Safety Certification Document		December 15, 2022
Section 106 Report		January 9, 2023
Environmental Document		March 15, 2023
Transportation Management Plan		April 15, 2023
Design Study Report		May 1, 2023
Right-Of-Way Plat and Descriptions		May 15, 2023
Utility Coordination Executed		May 2023
Final (90%) Road Plans		September 1, 2023
P.S. & E. Submittal	Draft PS&E to Region	September 1, 2023
	Final PS&E to Central Office	November 1, 2023
Letting Date		March 12, 2024
Begin Construction		Spring 2024
End Construction		Fall 2024

CTH ET - Construction Cost Estimate

Project Cost Range **\$4,000,000 to \$4,999,999**

The project is being funded (construction) through the FHWA's Federal Lands Access Program (FLAP) using Federal and Local (Monroe County) Funds.

Right-of-Way (RW) Impacts: The project will acquire RW.

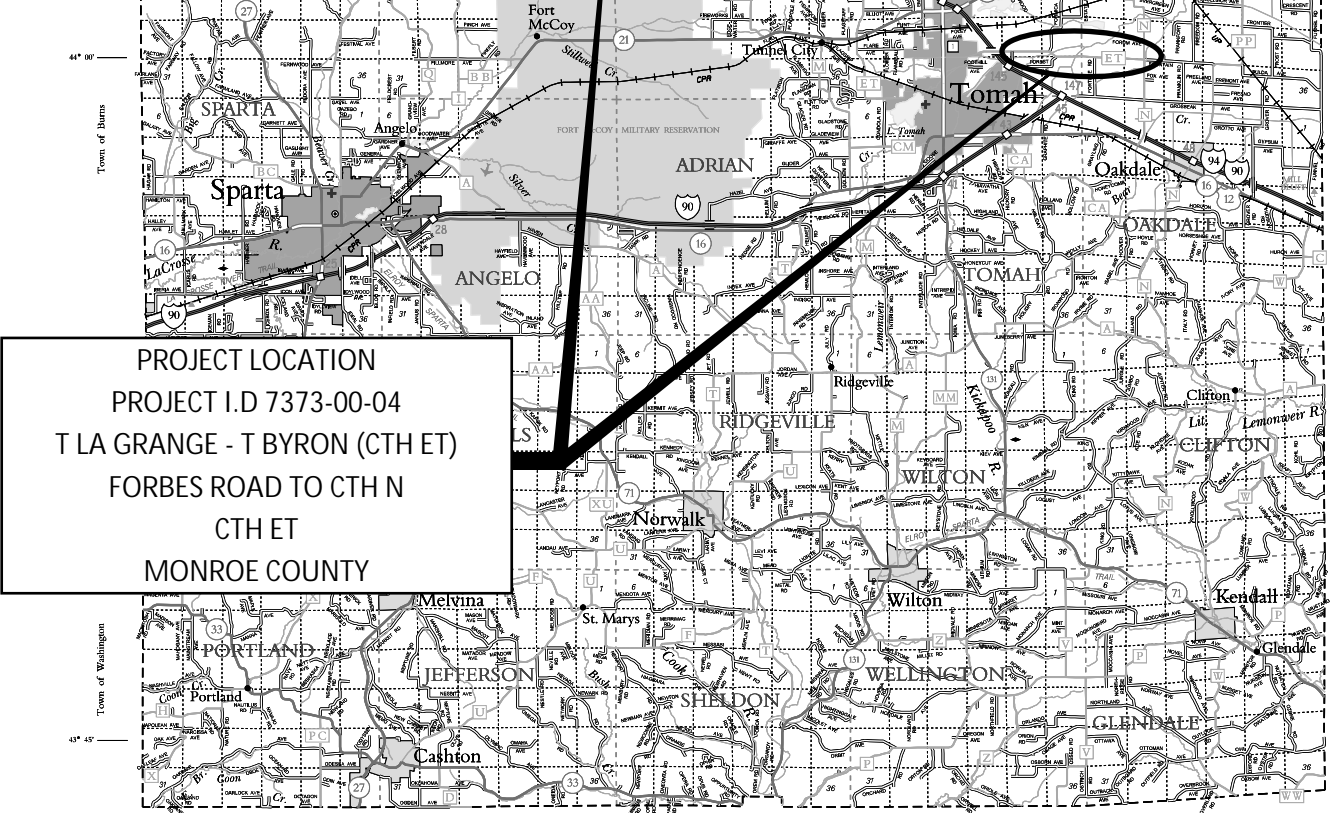
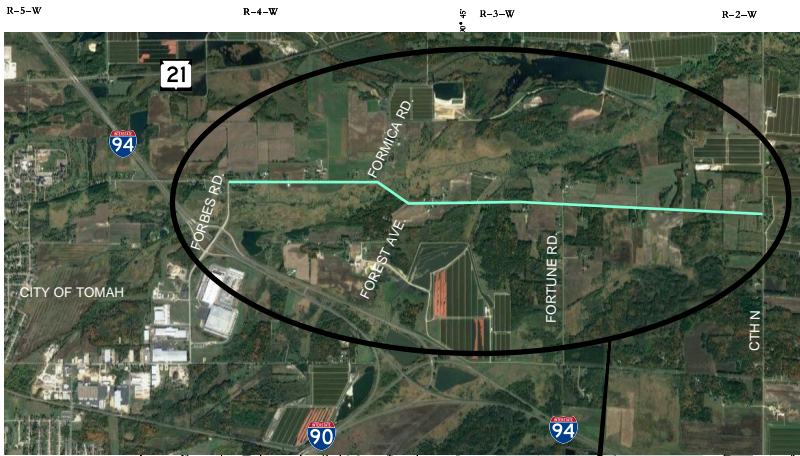
- On-going project coordination with...
 - **Utilities** (Oakdale Electric Cooperative, WE Energies, Lumen (CenturyLink))
 - **Agencies** (Wis Dept. of Natural Resources, Corps of Engineers, Monroe County Zoning, Fish & Wildlife Service, Historical Societies, Native American Tribes, Dept. of Agriculture Trade and Consumer Protection, Natural Resources Conservation Service)
- Safety Improvements include...
 - Smooth roadway surface with added skid resistance, widened roadway surface to a consistent width with 3' paved shoulders throughout, improved roadside grading, centerline rumble strips, improved sight distance along CTH ET and sideroad intersections, superelevation improvements at horizontal curves, new traffic control signs, delineation and new pavement markings.

Please direct any questions to:

Ellery Schaffer, P.E. – Project Manager
Jewell Associates Engineers, Inc.
560 Sunrise Drive
Spring Green, WI 53588
Ph: (608) 341-8159
Email: ellery.schaffer@jewellassoc.com

Attachments:

Attachment A: Project Location Map
Attachment B: Project Overview
Attachment C: Typical Finished Sections

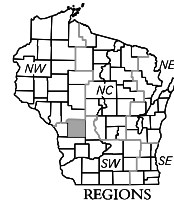
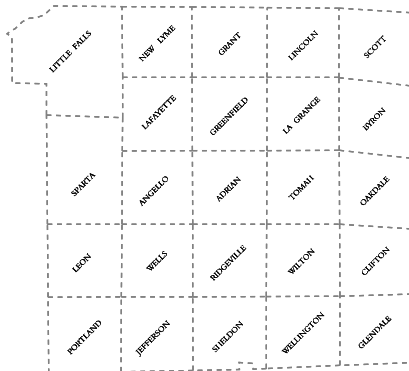


PROJECT LOCATION
 PROJECT I.D 7373-00-04
 T LA GRANGE - T BYRON (CTH ET)
 FORBES ROAD TO CTH N
 CTH ET
 MONROE COUNTY

LEGEND

- Freeway
- Multilane Divided
- U.S. or State Hwy
- County Trunk Hwy
- Town Road
- Firelane
- Railroad
- State Trail
- Interchange
- Highway Separation
- Interstate Highway No.
- U.S. Highway No.
- State Highway No.
- County Highway Letter
- State Boundary
- County Boundary
- Civil Town Boundary
- Section Line
- Dam
- Hospital
- Airport
- County Seat
- Unincorporated Village
- Fish Hatchery
- Game Farm
- Public Hunt or Fish Grds.
- Public Camp & Picnic Grds.
- Ranger Station
- State Park
- County Park
- Wash Facilities
- Rest Area
- Modern Facilities
- Wayside
- Biotic Facilities
- Veterans Administration Hospital

CIVIL TOWNS



SECTION NUMBERING OF A TOWNSHIP

6	5	4	3	2	1
7	8	9	10	11	12
18	17	16	15	14	13
19	20	21	22	23	24
30	29	28	27	26	25
31	32	33	34	35	36

MILES OF HIGHWAY
as of Dec. 31, 2018

STATE	238
COUNTY	344
LOCAL ROADS	1064
OTHER ROADS	88
TOTAL FOR COUNTY	1734

Land Area (200 Census) 901 sq mi
 Population (200 Census) 44673
 County Seat Sparta

MONROE CO.

DEPARTMENT OF TRANSPORTATION

Madison, Wisconsin

SCALE 1" = 2 MILES

Corrected for JAN. 2020

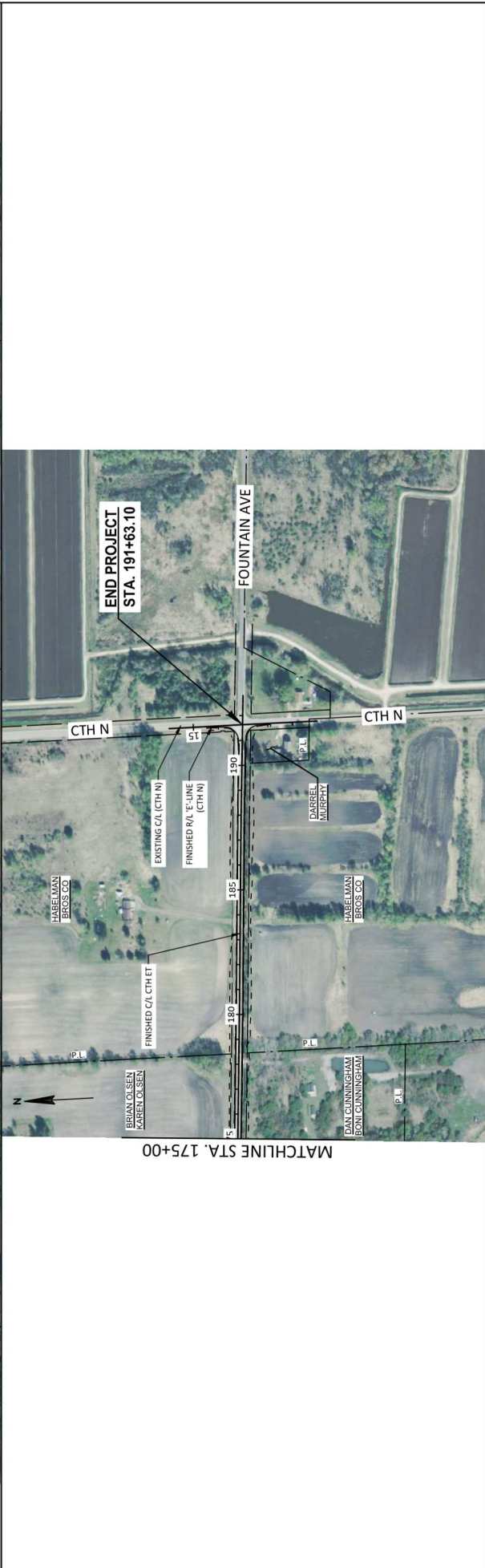
Base compiled from U.S.G.S. Quadrangles 100,000 Series

For boundaries of public hunting and fishing grounds please contact the Department of Natural Resources

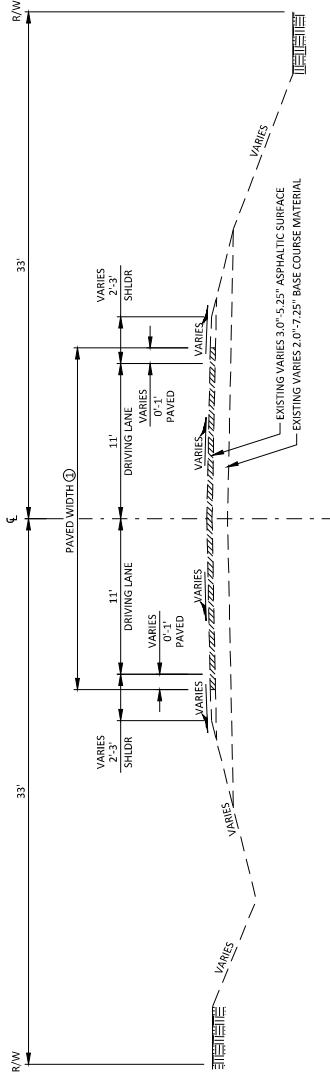


2

PROJECT NO: 7373-00-74
 COUNTY: MONROE
 HWY: CTH ET
 PROJECT OVERVIEW
 SHEET E



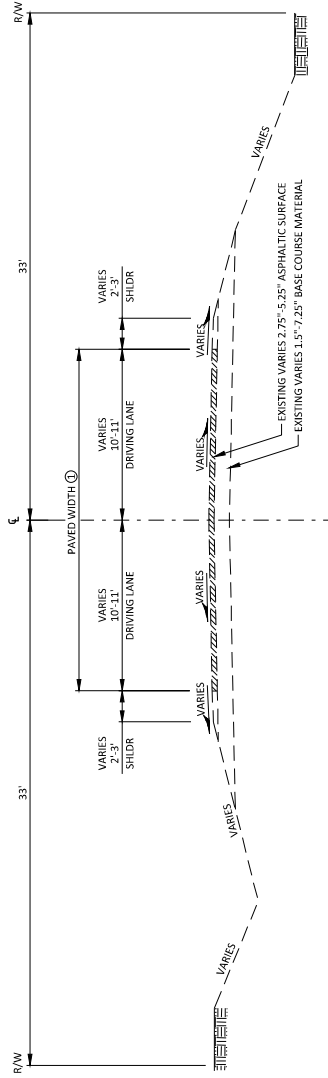
E	SHEET	PROJECT OVERVIEW	COUNTY: MONROE	HWY: CTH ET	PROJECT NO: 7373-00-74
---	-------	------------------	----------------	-------------	------------------------



TYPICAL EXISTING SECTION

CTH ET
STA. 13+89.89 - STA. 63+50

① PAVED WIDTH VARIES:
STA. 13+89.89 - STA. 63+50: 24'-0"
STA. 13+97.3 - STA. 63+50: 22'-0"



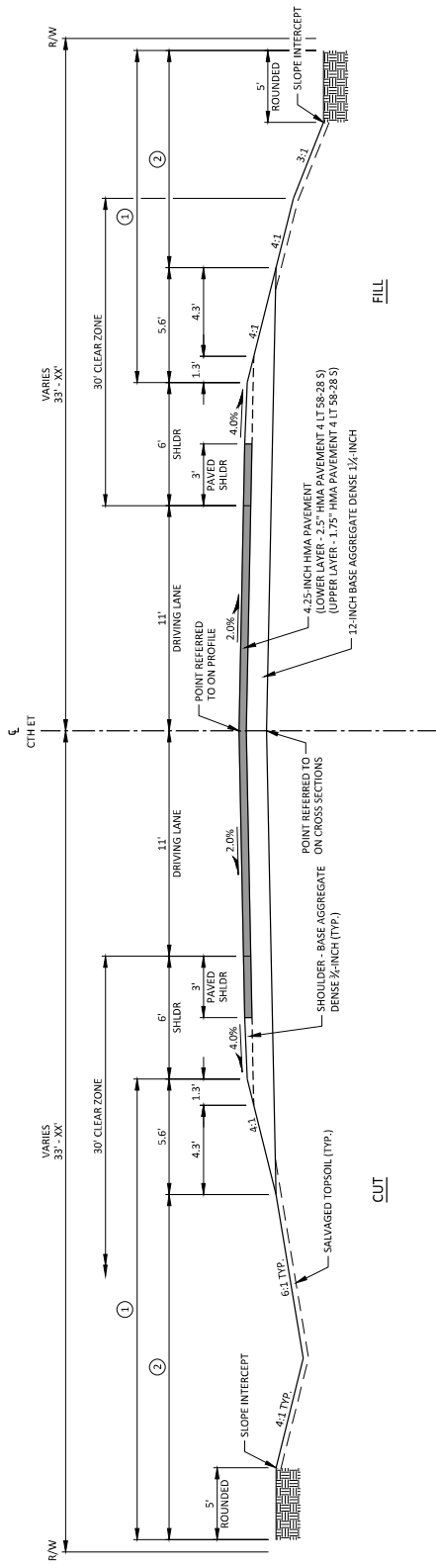
TYPICAL EXISTING SECTION

CTH ET
STA. 63+50 - STA. 191+63.10

① PAVED WIDTH VARIES:
STA. 63+50 - STA. 76+00: 22'-0"
STA. 76+00 - STA. 187+00: 20'-0"
STA. 187+00 - 191+63.43: 22'-0"

FOR INFORMATION ONLY
BORING LOG

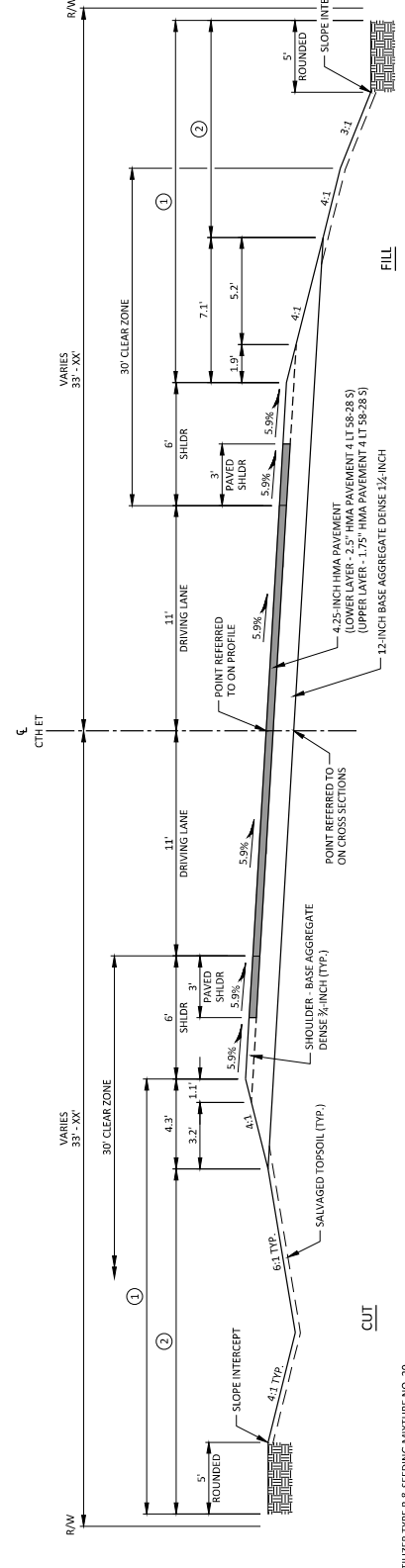
NO.	STATION/OFFSET (+/-)	EXISTING ASPHALTIC SURFACE THICKNESS (IN.)	BASE COURSE MATERIAL (IN.)
1	24+97.5 RT.	5.25	7.25
2	36+54.6' LT.	5.0	2.0
3	48+91.5' RT.	3.75	6.25
4	60+88.5' LT.	3.0	5.0
5	72+85.5' RT.	3.0	4.0
6	84+82.4' LT.	4.5	2.5
7	96+79.5' RT.	3.5	3.5
8	108+76.4' LT.	2.75	4.25
9	120+73.5' RT.	4.0	3.0
10	132+70.5' LT.	3.5	1.5
11	144+67.5' RT.	3.5	6.0
12	156+64.5' LT.	4.5	3.5
13	168+61.4' RT.	3.75	3.25
14	180+58.5' LT.	2.75	2.25



- ① LIMITS OF FERTILIZER TYPE B & SEEDING MIXTURE NO. 20 (AS DIRECTED BY ENGINEER)
- ② LIMITS OF SALVAGED TOPSOIL & MULCH/EROSION MAT (SEE EROSION CONTROL PLAN FOR FURTHER INFORMATION FOR MULCH/EROSION MAT LIMITS) (AS DIRECTED BY ENGINEER)

TYPICAL FINISHED SECTION

CTH ET
 STA. 13+89.85 - STA. 60+50.85
 STA. 63+33.08 - STA. 63+50



- ① LIMITS OF FERTILIZER TYPE B & SEEDING MIXTURE NO. 20 (AS DIRECTED BY ENGINEER)
- ② LIMITS OF SALVAGED TOPSOIL & MULCH/EROSION MAT (SEE EROSION CONTROL PLAN FOR FURTHER INFORMATION FOR MULCH/EROSION MAT LIMITS) (AS DIRECTED BY ENGINEER)

TYPICAL FINISHED SUPERELEVATED SECTION

CTH ET
 STA. 61+50.85 - STA. 63+33.08

PROJECT NO: 7373-00-74

HWY: CTH ET

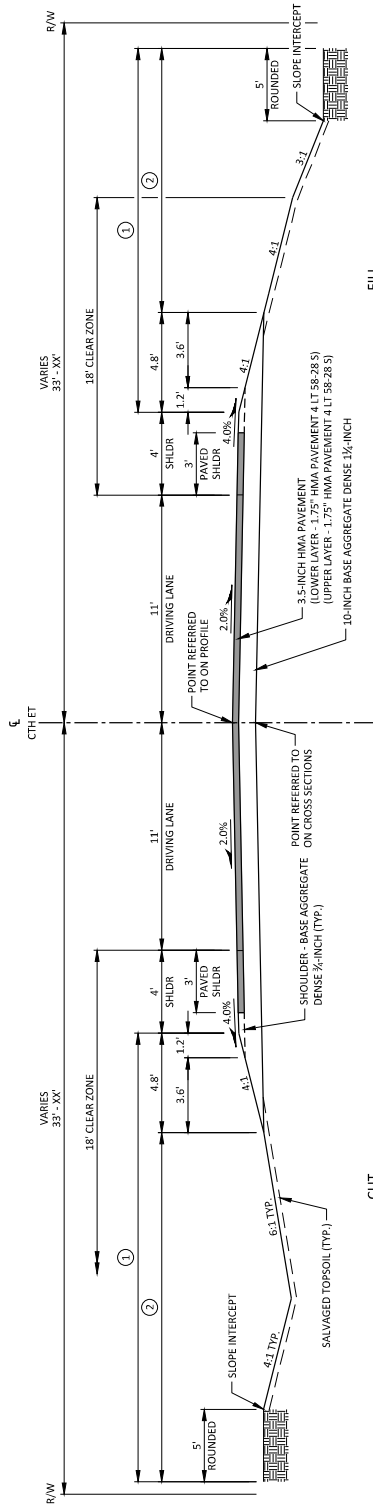
COUNTY: MONROE

TYPICAL FINISHED SECTIONS

SHEET

E

FILE NAME: S:\PROJECTS\7373\7373-00-74\HWY - CTH ET (FORBES RD TO CITY N)\SHEETS\PLAN\TYPICALS\MONROE - TYPICAL SECTIONS.DWG
 PLOT DATE: 12/29/2022 1:52 PM
 PLOT BY: DANIEL GERUNG
 PLOT SCALE: 1" = 1'



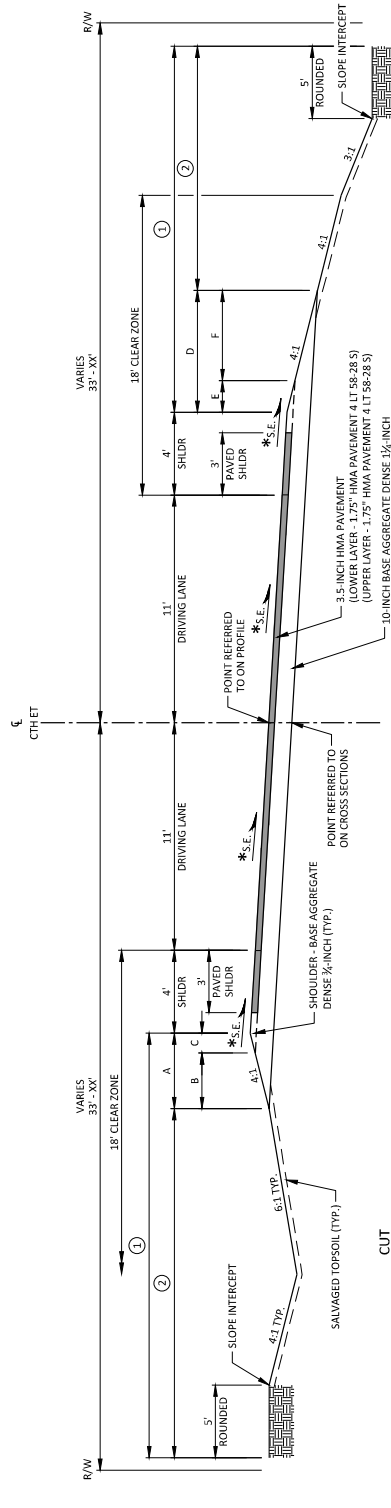
FILL

CUT

- ① LIMITS OF FERTILIZER TYPE B & SEEDING MIXTURE NO. 20 (AS DIRECTED BY ENGINEER)
- ② LIMITS OF SALVAGED TOPSOIL & MULCH/EROSION MAT (SEE EROSION CONTROL PLAN FOR FURTHER INFORMATION FOR MULCH/EROSION MAT LIMITS) (AS DIRECTED BY ENGINEER)

TYPICAL FINISHED SECTION

CTH/ET
 STA. 68+50 - STA. 73+19.76
 STA. 75+19.22 - STA. 106+45.35
 STA. 110+39.60 - STA. 131+63.10



FILL

* SEE SUPERELEVATION TABLE

- ① LIMITS OF FERTILIZER TYPE B & SEEDING MIXTURE NO. 20 (AS DIRECTED BY ENGINEER)
- ② LIMITS OF SALVAGED TOPSOIL & MULCH/EROSION MAT (SEE EROSION CONTROL PLAN FOR FURTHER INFORMATION FOR MULCH/EROSION MAT LIMITS) (AS DIRECTED BY ENGINEER)

THE LOW SIDE SHOULDER SLOPE ON THE SUPERELEVATED SECTION SHALL BE 4:1 TYP. IF THE SHOULDER SUPERELEVATION IS GREATER THAN 0.04 FT./FT. THE SUPERELEVATION IS LESS THAN OR EQUALS 0.04 FT./FT., THEN THE LOW SIDE SHOULDER SLOPE IS 0.04 FT./FT. THE HIGH SIDE SHOULDER SLOPE ON THE SUPERELEVATED SECTION EQUALS THE SUPERELEVATION.

TYPICAL FINISHED SUPERELEVATED SECTION

CTH/ET
 STA. 73+19.76 - STA. 75+19.22
 STA. 106+45.35 - STA. 110+39.60

PROJECT NO: 7373-00-74

HWY: CTH ET

COUNTY: MONROE

TYPICAL FINISHED SECTIONS

SHEET

E