

Monitoring Stations

Intellisense Systems

Monitoring stations include a solar-powered head unit containing the cellular modem and data processor.

The head unit has four (4) sensor ports. Sensors include: Rain gauge, water pressure sensor, and camera sensor.



Installation

Stations took 2-3 hours for 2 people to install. Signage is included to provide information and contact for public.







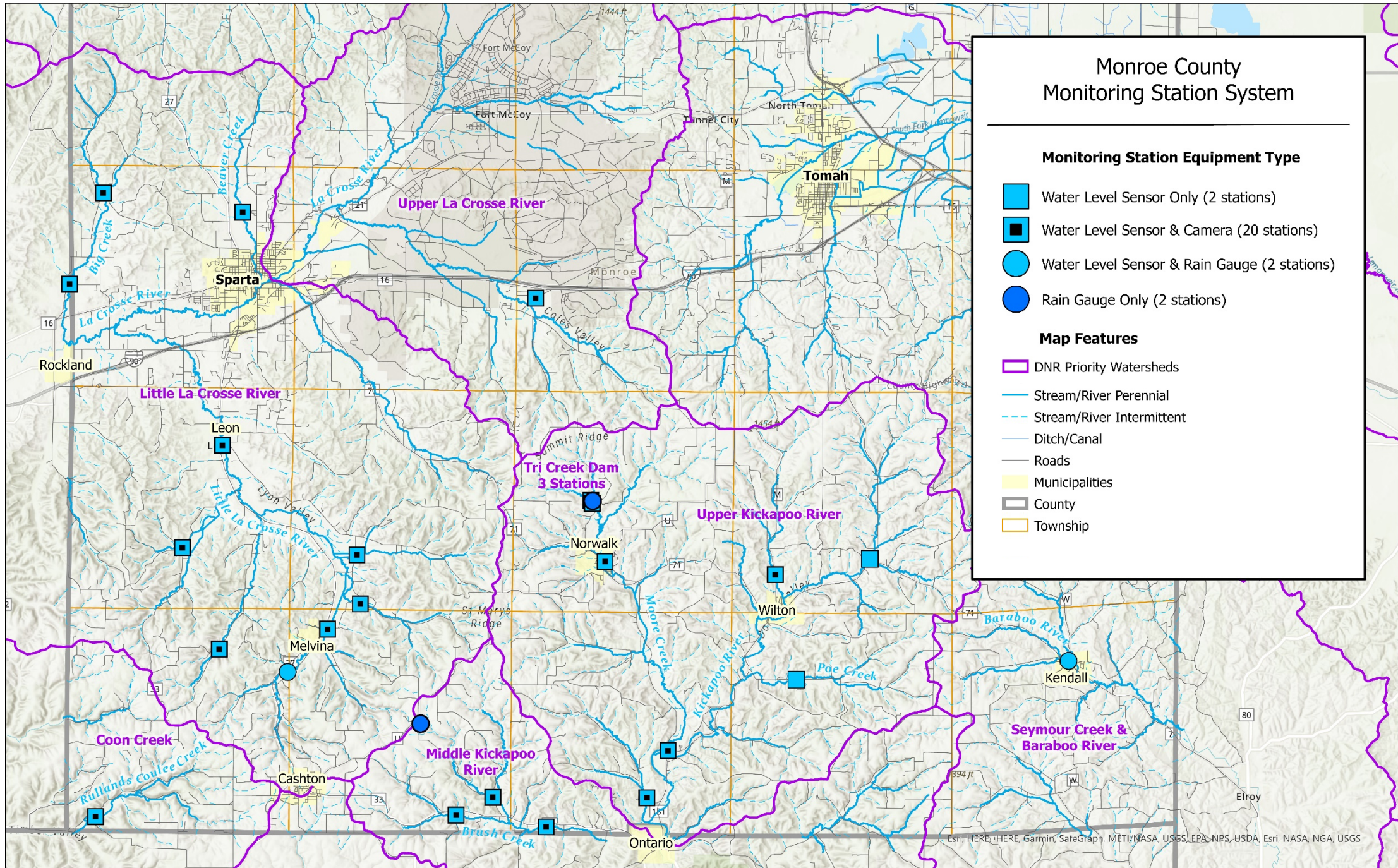
The Great Cow Getaway





C
O
W
A
B
U
N
G
A





Monroe County Monitoring Station System

Monitoring Station Equipment Type

- Water Level Sensor Only (2 stations)
- Water Level Sensor & Camera (20 stations)
- Water Level Sensor & Rain Gauge (2 stations)
- Rain Gauge Only (2 stations)

Map Features

- DNR Priority Watersheds
- Stream/River Perennial
- Stream/River Intermittent
- Ditch/Canal
- Roads
- Municipalities
- County
- Township

ESRI, HERE, HERE, Garmin, SafeGraph, METI/NASA, USGS, EPA-NPS, USDA, Esri, NASA, NGA, USGS

Monitoring Station Funding

Funding Source	Funding Amount	# of Stations	Year Installed
Fishers & Farmers Partnership Grant	\$9,123	2	2021
Donation Funding	\$10,500	3	2021
FEMA BRIC Grant (\$30,000) Donation funding used for local match (\$11,500)	\$41,500	10	2022
WI DHS Environmental Health Capacity Grant	\$50,494	12	2022
Total	\$111,617	27 Stations	

Monitoring Station Data Dashboard

Local Time: 10/5/2022 16:17:25
UTC Time: 10/5/2022 21:17:25

Signal Strength

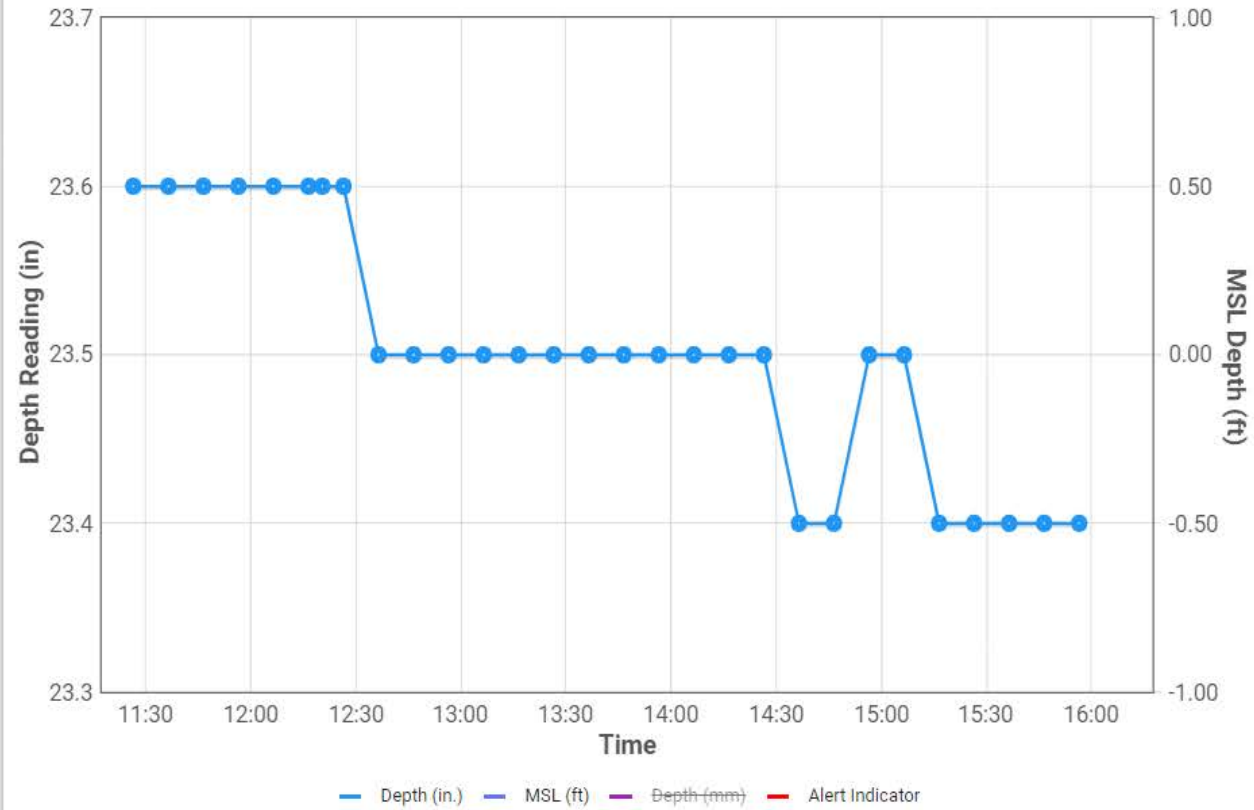


High (-51 dB)

Device Location



Depths, Alert Indicator



Monitoring Station Data Dashboard

Data Settings

Sensor Data

Rise Rate Indicator:	No Flooding
Drop Rate Indicator:	No Drop Rate Alert
Depth Trigger Indicator:	No Depth Alert
Cell Signal Strength:	-51 dB
IMEI #:	352753093175253
Radio ID:	00636
Battery:	5.4 V
GPS Location:	43.7315, -90.8956
Elevation:	887 ft / 270.3 m
Barometric pressure @ Node:	986.08 mbar / 29.12 inHg
Depth Measurement:	23.4 in / 1.9 ft / 594.36 mm
Water Temperature (if under water):	13.6 °C / 56.5 °F
Device Type:	Water Level Pressure
External Device Type:	Sensor only
External Device Data:	n/a
Time Stamp:	10/5/2022 15:56:28
Gateway Type:	Cellular


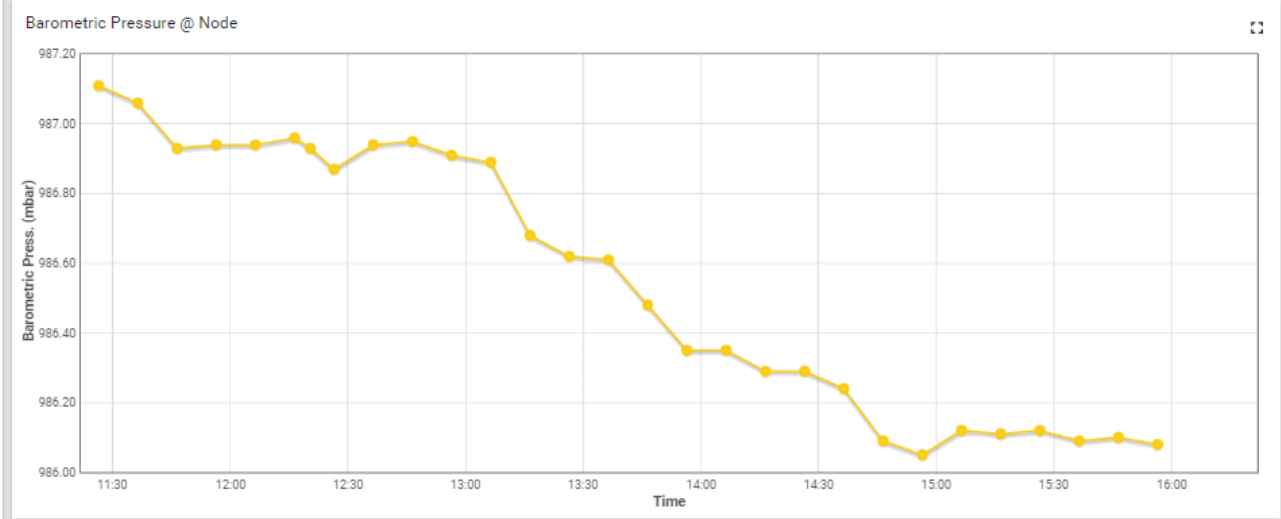
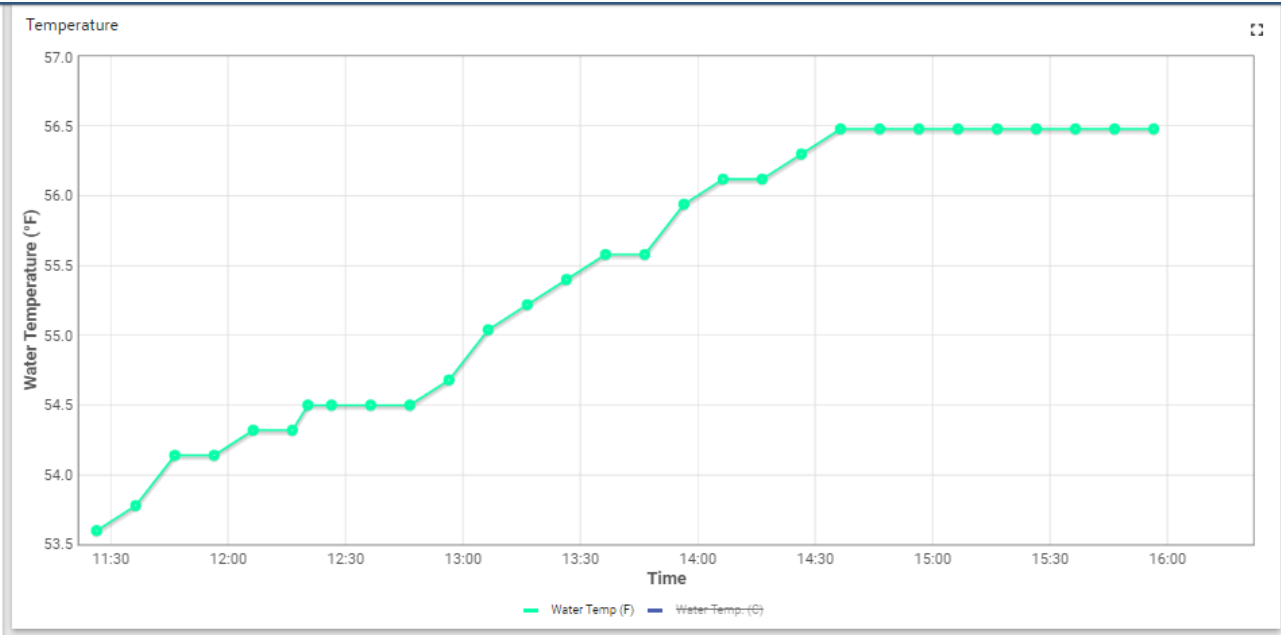


Image Time Stamp: 10/5/2022 12:20:03



Unit: 628 - Manna Ave.

Data Timestamp: 1/31/2023 20:56:28

Image Timestamp: 1/29/2023 11:10:02



Rise Rate Indicator: none

Drop Rate Indicator: none

Depth Alert Indicator: none

Depth Alert Levels: (1) 255.0 in. (2) 255.0 in. (3) 255.0 in.

Depth Indicator: 9.30 in.

Water Temp: 1.6 °C/34.9 °F

Battery: High Signal Strength: High

Latitude: 43.7974 Longitude: -90.8297

Elevation: 968 ft

Gateway Type: CELL

[Go To Unit Dashboard](#)



Unit: 626 - Lamplighter South

Data Timestamp: 1/31/2023 20:56:28

Image Timestamp: 1/31/2023 11:09:26



Rise Rate Indicator: none

Drop Rate Indicator: none

Depth Alert Indicator: none

Depth Alert Levels: (1) 255.0 in. (2) 255.0 in. (3) 255.0 in.

Depth Indicator: 6.40 in.

Water Temp: 0.6 °C/33.1 °F

Battery: High Signal Strength: High

Latitude: 43.8159 Longitude: -90.7540

Elevation: 881 ft

Gateway Type: CELL

[Go To Unit Dashboard](#)



Unit: 638 - Opal Rd.

Data Timestamp: 1/31/2023 20:56:28

Image Timestamp: 1/31/2023 11:08:10



Rise Rate Indicator: none

Drop Rate Indicator: none

Depth Alert Indicator: none

Depth Alert Levels: (1) 255.0 in. (2) 255.0 in. (3) 255.0 in.

Depth Indicator: 19.70 in.

Water Temp: 1.3 °C/34.3 °F

Battery: High Signal Strength: High

Latitude: 43.7291 Longitude: -90.6521

Elevation: 960 ft

Gateway Type: CELL

[Go To Unit Dashboard](#)



Monitoring Station Data Dashboard

Data **Settings**

Device Commanding

Commands to set Enable All Disable All

Depth Detection Thresholds
Depth Detection Threshold 1: **disabled** Disable Threshold Value (in.)
Depth Detection Threshold 2: **disabled** Disable Threshold Value (in.)
Depth Detection Threshold 3: **disabled** Disable Threshold Value (in.)

Depth Detection Holdoff: **disabled** Disable Hours to holdoff

Rise Rate Threshold: **4.2 in./m** Disable Threshold Value (in./m)
Drop Rate Threshold: **disabled** Disable Threshold Value (in./m)

Reporting Modes: **auto** Auto Mode Fast Mode Slow Mode
Sampling Modes: **30 sec** 30 sec 60 sec

Saltwater Adjustment: **disabled** Enable Disable

Action Requests: **Last Command - Image Capture** Image Request GPS Sync Reboot

External Device: **Sensor only** Disable Vol/tip (in.)

Calibration Offset: **-0.30 in** Reset Calibration Calibration Value

Imaging Modes
Depth Detection Imaging: **enabled** Enable Disable
Rise Rate Imaging: **enabled** Enable Disable
Drop Rate Imaging: **enabled** Enable Disable
High Resolution Imaging: **disabled** Enable Disable

Triggered Imaging Holdoff: **disabled** Disable Hour Start (UTC) Hour End (UTC)

Destination IP Address: **0.0.0.0** . . .

Destination Port: **-9999**

Send Command

Export Device Data

Start Date: End Date:

Select Device(s)

- 570 - Lincoln Ave.
- 571 - Market Road
- 572 - Nebraska Ave.
- 573 - St. Mary's Ridge
- 574 - County Road Z
- 624 - Jancing Ave.
- 625 - County Road F
- 626 - Lamplighter South
- 627 - Lamplighter North
- 628 - Manna Ave.

Data to Export

- Select All
- Depth Rise Rate Indicator Drop Rate Indicator Depth Alert Indicator
 - Latitude Longitude Elevation
 - Water Temp. Baro. Press. Battery Level RSSI
 - Sampling Mode Reporting Mode Calib. Value MSL Offset MSL Depth Image File Gateway Type
 - Calibration Type Depth Det. Image Enable Depth Alert Level 1 Depth Alert Level 2 Depth Alert Level 3
 - Depth Det. Holdoff Depth Hold Hours Drop Rate Image Enable Drop Rate Enable
 - Rise Rate Threshold Rise Rate Trigger Enable Rise Rate Image Enable
 - GPS Sync High Res. Imaging Enable Image Hold Enable
 - Image Hold End Hour Image Hold Start Hour IP Address Port Previous Command Protocol
 - Tips Rainfall Intensity

Export Document Format: CSV Excel

export

Monitoring Station Data Dashboard

Image Scheduling

Device Name	IMEI	Node ID	Image Hold Enabled	Image Hold Start	Image Hold End	Alias	Image Schedule Enabled	Current Schedule (UTC Day)	Current Schedule (UTC Hour)	Schedule Enabled (Input)
MonroeCounty00570	356726104219787	00570		0	0	570 - Lincoln Ave.	true	Mon Tue Wed Thu Fri Sat Sun	17:00 17:00 17:00 17:00 17:00 17:00 17:00	<input checked="" type="checkbox"/>
MonroeCounty00571	356726104222971	00571		0	0	571 - Market Road	false			<input type="checkbox"/>

Device Alert Settings

Device Name	Node ID	Alias	Alert Enabled	Alert Email(s)	Alert Enabled (Input)
MonroeCounty00570	00570	570 - Lincoln Ave.	true	roxie.anderson@co.monroe.wi.us	<input checked="" type="checkbox"/>
MonroeCounty00571	00571	571 - Market Road	true	roxie.anderson@co.monroe.wi.us	<input checked="" type="checkbox"/>
MonroeCounty00572	00572	572 - Nebraska Ave.	true	roxie.anderson@co.monroe.wi.us	<input checked="" type="checkbox"/>
MonroeCounty00573	00573	573 - St. Mary's Ridge	true	roxie.anderson@co.monroe.wi.us	<input checked="" type="checkbox"/>
MonroeCounty00574	00574	574 - County Road Z	true	roxie.anderson@co.monroe.wi.us	<input checked="" type="checkbox"/>

Monitoring Station Data – National Weather Service

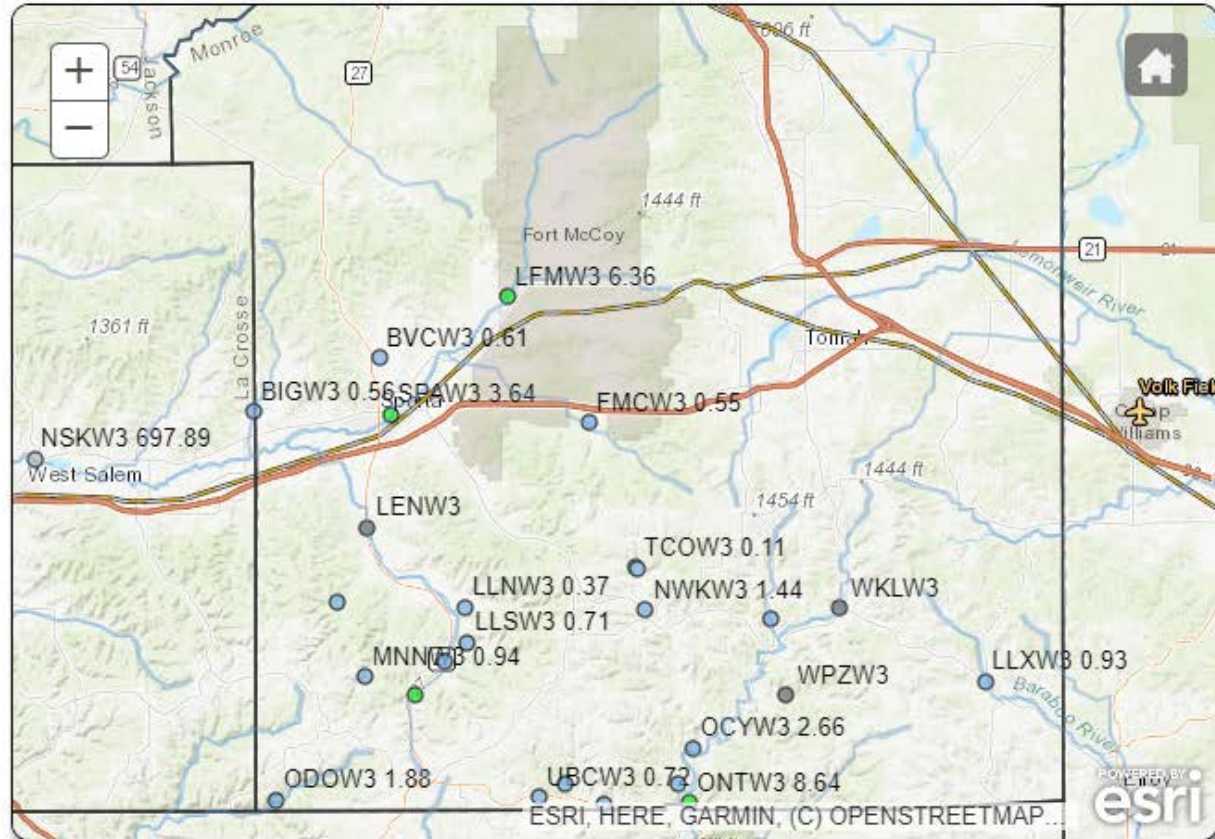
Southwest Wisconsin Hydrology Monitor

[Weather.gov](#) > [La Crosse, WI](#) > Southwest Wisconsin Hydrology Monitor

La Crosse, WI
Weather Forecast Office

[Current Hazards](#) [Current Conditions](#) [Radar](#) [Forecasts](#) [Rivers and Lakes](#) [Climate and Past Weather](#) [Local Programs](#)

Click anywhere on the map for the forecast for that location. Turn "on and off" the various weather parameters using the display options. Hover over a highlighted area to see the hazard.



Map Display Options (Click ">" for legend to display option)

- Radar >
- Rivers >
- River Stages >
- 24 Hour Flood Forecast
- Lightning Density
- Severe Thunderstorm Warnings
- Tornado Warnings
- Flash Flood Warnings >
- Severe Thunderstorm Watches
- Tornado Watches
- Flash Flood Watches >
- Other Flooding Hazards >