

MONROE COUNTY CERTIFIED U.S. PUBLIC LAND SURVEY MONUMENT RECORD

INSTRUCTIONS: THIS RECORD SHALL SHOW THE LOCATION OF THE CORNER AND SHALL INCLUDE ALL OF THE FOLLOWING ELEMENTS (A-D)

Found 1-1/4" DIA. IRON ROD N±E 5TH 131.

(A) IDENTIFY THE CORNER BY REFERENCE TO THE U.S. PUBLIC LAND SURVEY SYSTEM

■ = CORNER MONUMENT RESTORED

WITNESSES TO CORNER LOCATION:

- 1)
- 2)
- 3)

STATE PLANE COORDINATES (WISCONSIN: SOUTH ZONE)
NORTHING:
EASTING:

*MONROE COUNTY COORDINATES N 347,754.96
NORTHING: WISCRES
EASTING: NAD 83/2011 E 715,303.67*

(B) DESCRIBE ANY RECORD EVIDENCE, MONUMENT EVIDENCE, OCCUPATIONAL EVIDENCE, TESTIMONIAL EVIDENCE OR ANY OTHER MATERIAL EVIDENCE YOU CONSIDERED, AND WHETHER THE MONUMENT WAS FOUND OR PLACED.

I HONORED THE LOCATION OF THIS LONG STANDING CORNER OF COMATION REPORT. I ADDED TIES WHICH ARE MORE USER FRIENDLY.

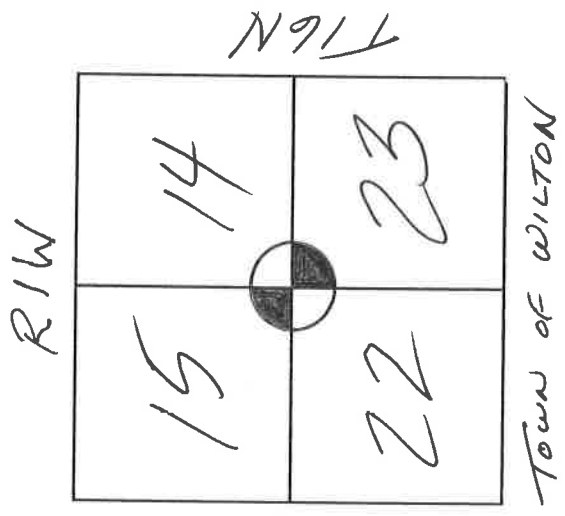
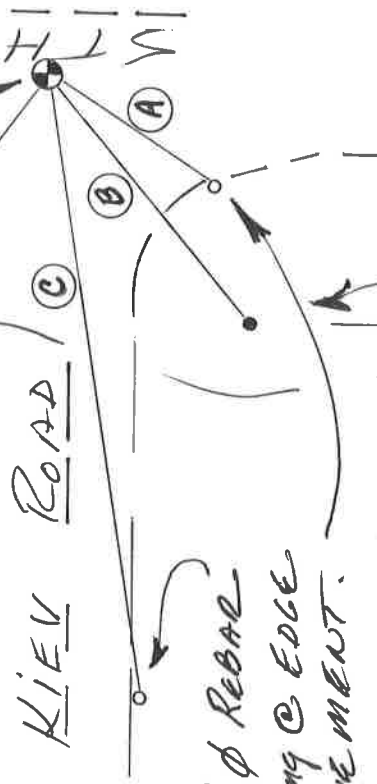
(C) IN THE PLAN VIEW DRAWING BELOW, PROVIDE REFERENCE TIES TO AT LEAST 4 WITNESS MONUMENTS OR, IF THE LOCATION IS WITHIN A MUNICIPALITY, TO AT LEAST 2 WITNESS MONUMENTS. (WITNESS MONUMENTS SHALL BE MADE OF CONCRETE, NATURAL STONE, IRON, OR OTHER EQUALLY DURABLE MATERIAL.) DESCRIBE WITNESS MONUMENTS.

AZIMUTHS SHOW ARE ARE MONROE CO. WISCONS NAD83(2011).

(D) SHOW A PLAN VIEW DRAWING, DEPICTING THE RELEVANT MONUMENTS AND REFERENCE TIES, WHICH IS SUFFICIENTLY DETAILED TO ENABLE ACCURATE RELOCATION OF THE CORNER MONUMENT IF IT IS DISTURBED.

TIES

- (A) *S 38°-10'-50" W, 33.05'*
- (B) *S 66°-19'-59" W, 65.34'*
- (C) *S 89°-36'-11" W, 122.09'*
- (D) *N 57°-06'-16" W, 73.65'*



54522
Found 1/2" Ø REBAR @ Yellow R/W Post
SET 3/4" Ø REBAR X 18" LONG @ EDGE OF PAVEMENT.
Found 1-1/4" Iron Rod
EDGE OF PAVEMENT (TYP.)
N 00°-19'-44"E, 2643.08'
NOTE: TIE TO HARRISON @ 1/4 COR. SEC. 14 15

(E) DESCRIBE ANY MATERIAL DISCREPANCY BETWEEN THE LOCATION OF THE CORNER AS RESTORED OR REESTABLISHED AND THE LOCATION OF THAT CORNER AS PREVIOUSLY RESTORED OR REESTABLISHED BY DISTANCE AND DIRECTION. SHOW THE DISCREPANCY ON THE PLAN VIEW DRAWING UNDER (D), ABOVE. SHOW THE DISTANCES BETWEEN THE CORNER AS PREVIOUSLY RESTORED OR REESTABLISHED AND (1) THE CORNER AS RESTORED OR REESTABLISHED, AND (2) TO AT LEAST 2 OF THE WITNESS MONUMENTS AS SHOWN ON THE DRAWING IN (D), ABOVE.

None.

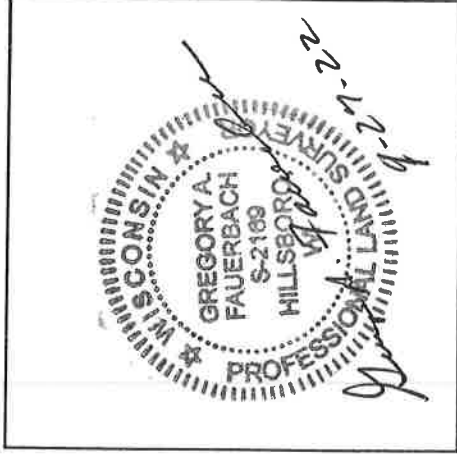
(F) WAS THE CORNER RESTORED THROUGH ACCEPTANCE OF (1) AN OBLITERATED EVIDENCE LOCATION, OR (2) A FOUND PERPETUATED LOCATION?

(2).

(G & H) WAS THE CORNER REESTABLISHED THROUGH LOST CORNER PROPORTIONATE METHODS? IF SO SHOW THE METHOD, INCLUDING THE DIRECTION AND DISTANCES TO OTHER PUBLIC LAND SURVEY CORNERS USED AS EVIDENCE OR USED FOR PROPORTIONING IN DETERMINING THE CORNER LOCATION.

No

AFFIX LAND SURVEYOR SEAL



(I) I, *Gregory Fauerbach* CERTIFY THAT THE LOCATION SHOWN ON THIS RECORD WAS DETERMINED BY ME OR UNDER MY DIRECTION AND CONTROL AND THAT THIS U.S. PUBLIC LAND SURVEY MONUMENT RECORD IS CORRECT AND COMPLETE TO THE BEST OF MY KNOWLEDGE AND BELIEF.

Gregory A. Fauerbach *9-27-22*

SIGNATURE

DATE

54522

CERTIFICATE

CERTIFIED LAND CORNER

21601150000

No. 65
Pg. 2

I, Garold A. Sime, do hereby certify that on the 13th day of June 19 86, I found (evidence) ~~(no evidence)~~ of the NE corner of Sec. 22, T 16 N, R 1W Fourth Principal Meridian, and I re-established said corner according to the Wisconsin Statutes as shown and described hereon.

Dated this 29th day of Dec 19 86.

Garold A. Sime

Deputy County Surveyor

Title

History of corner establishment since Original Government Survey

* See previous land corner record

Description of corner evidence found:

Monumented this corner at location computed from the Dept. of Transportation right-of-way plat of S.T.H. "131" and previous survey information. This fits the remaining D.O.T. Tie reasonably well.

COUNTY SURVEYOR FORM NO. 1

Description of corner and witness monuments, references and accessories used to perpetuate the original or re-established location of this corner:

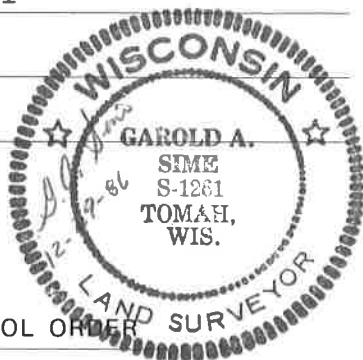
Set 1/4" round iron bar at corner

Witnesses to corner location:

Garold A. Sime, R.L.S.

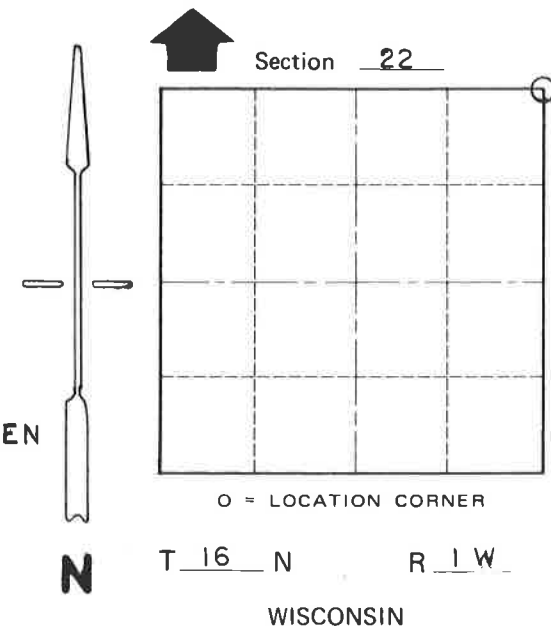
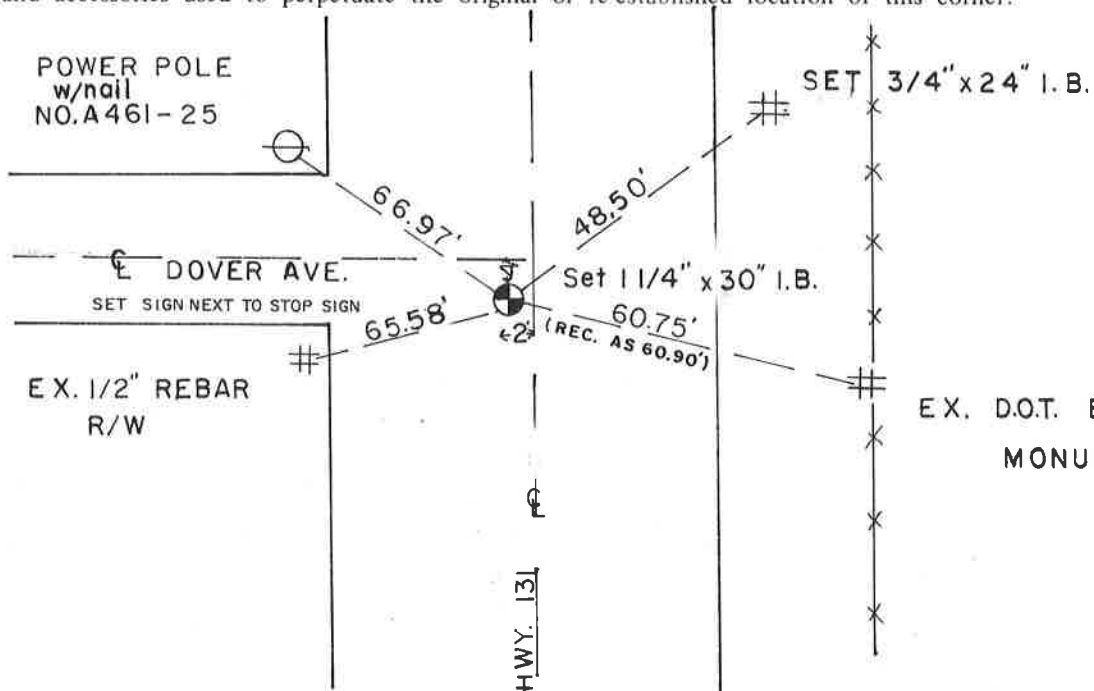
Dallas Wilhite

Joel Tralmer



SURVEY CONTROL ORDER

Horizontal	_____
Vertical	_____



WISCONSIN COORDINATE SYSTEM

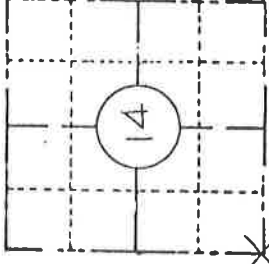
Corner	East (X)	North (Y)	Elevation (Z)	Zone
Control Sta. Name				

City, Village or Town Wilton
County of Monroe

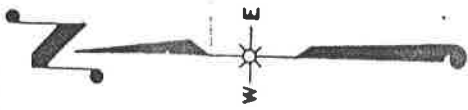
FIELD SURVEY NOTES
 PRESERVATION OF LANDMARKS
 (Pursuant to Section 59.635(7) Wisconsin Statutes)

State Highway Commission of Wisconsin
 Form E-D-707-65

COUNTY	MONROE		
TOWN	WILTON		
HIGHWAY	S.T.H. 131		
SECTION	TOWNSHIP	RANGE	
14	16 N	1W	
TYPE OF LANDMARK			
1 1/4" X 30" IRON BAR IN PLACE			
SET BY MONROE CO. SURVEYOR 1977			

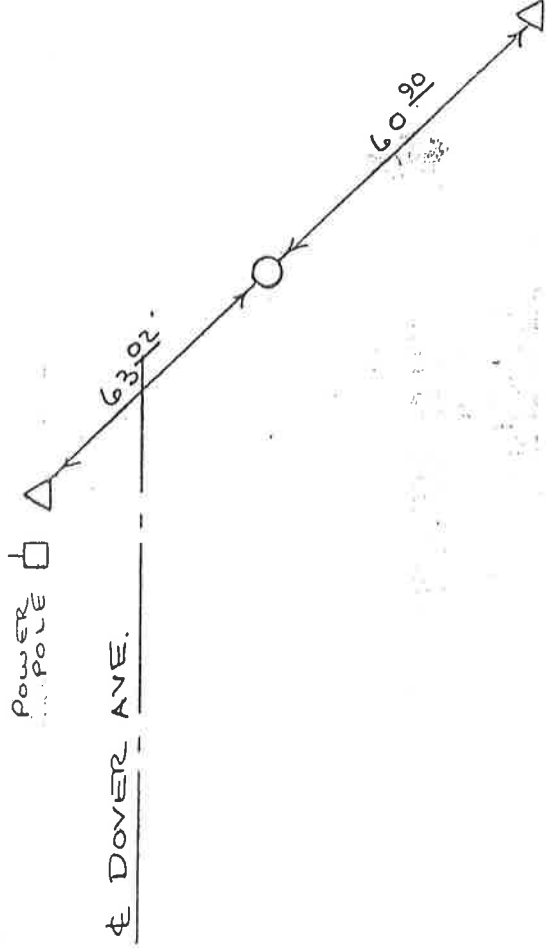


LOCATION SKETCH
 (Location of landmark indicated by "x")



This space for copy of field notes or ties to the above described landmarks

O = 1 1/4" X 30" IRON BAR
 Δ = WIS. D.O.T. BERNSTEIN MONU.
 SET ALONG NEW S.T.H. 131 R/W



CREW CHIEF M. WEGE

21601150000

FILED UNDER PROJECT NUMBER	5130-5-72	
SHC DISTRICT OFFICE NUMBER	CITY	COUNTY
#5	LA CROSSE	LA CROSSE
LOCATED OR ESTABLISHED BY		
SURVEY COORDINATOR		
NAME		
TITLE SURVEY COORDINATOR DATE 5-14-84		

COUNTY CLERK'S OFFICE	WISCONSIN } SS	
COUNTY OF	DATE RECEIVED FOR RECORD	DATE COPY SENT TO COUNTY SURVEYOR
SIGNATURE OF COUNTY CLERK		

PRESERVATION OF LANDMARKS

PAGE _____

CERTIFICATE

CERTIFIED LAND CORNER

2160115000

No. 65
Pg. 1

I, William C. Jung, do hereby certify that on the 28th day of October 19 77, I found ~~(evidence)~~ (no evidence) of the S.W. corner of Section 14, T 16 N, R 1 W, Fourth Principal Meridian, and I re-established said corner according to the Wisconsin Statutes as shown and described hereon.

History of original corner establishment:

Hamilton LaRue was at this corner in January of 1897 as was O.R. Dahl in June of 1869.

Description of corner evidence found:

Doubled the distance from the West 1/4 corner of Section 14 to the 1/8 corner to the South, and set this point at a location in proportion to the original government notes along the South line of the SW1/4 of Section 14 and along the South line of the SE1/4 of Section 15. This location fits very well the evidence found in Sections 14 and 15, and previous surveys.

Dated this 3rd day of Nov. 19 77.

William C. Jung, R.L.S. 1323
Crew Chief, County Surveyor'S
Title Office

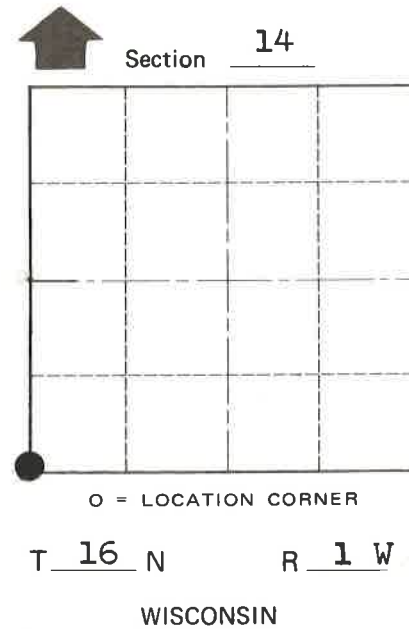
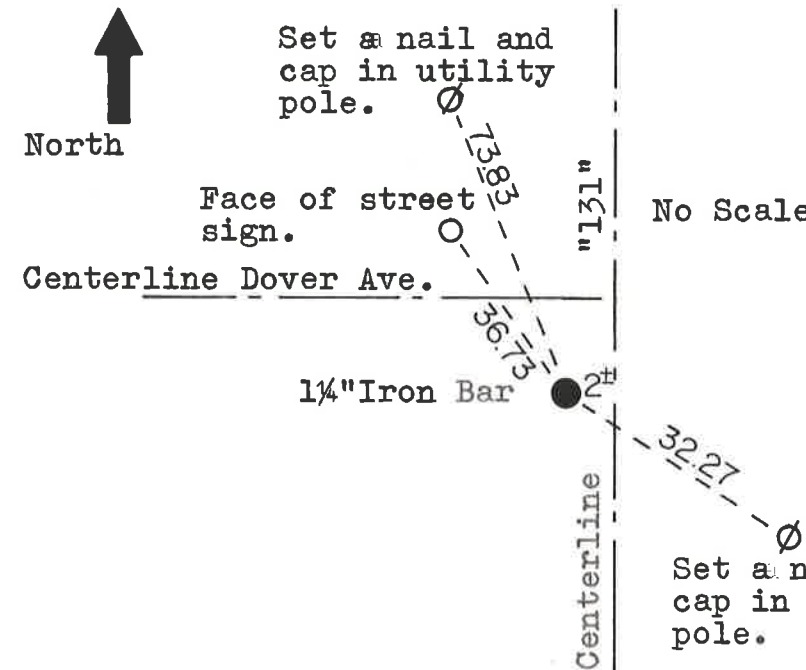
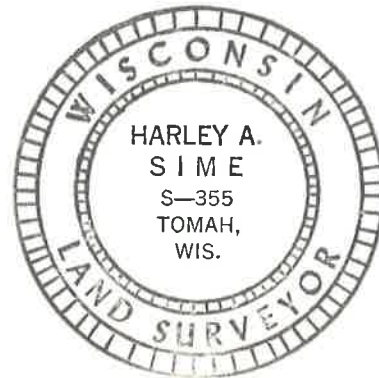
Description of corner and witness monuments, references and accessories used to perpetuate the original or re-established location of this corner:

Set a 1 1/4"x30" iron bar, down 1", and 5.5 ft. South of the centerline of Dover Ave.

Witnesses to corner location:

W. C. Jung

G. Dechant



COUNTY SURVEYOR FORM NO. 1

SURVEY CONTROL ORDER

Horizontal _____
Vertical Scaled Elev.

Approved: Harley Sime
County Surveyor

WISCONSIN COORDINATE SYSTEM

Corner	East (X)	North (Y)	Elevation (Z)	Zone
	<u>1875080.057</u>	<u>677044.773</u>	<u>1084+</u>	<u>SOUTH</u>
Control Sta. Name				

City, Village or Town Wilton

County of Monroe