

**U. S. Public Land Corner  
Maintenance**

# 47

Corner: SE Sec. 9, T16N-R1E

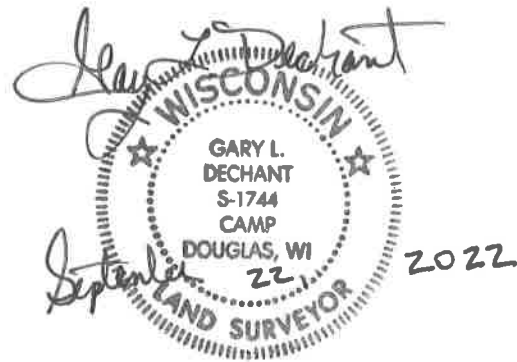
41601090000

<u>Date</u>	<u>Crew</u>	<u>Monument type</u>
September 22, 2022	Zachariah P. Dechant Gary L. Dechant	Found 1 1/4" round iron bar down 2', 3' west of north-south fence, 13' east of east edge of pond, 90' north of Little Lemonweir River. Set 1 1/4"x30" round iron bar over top of existing bar coupled with plastic pipe. Set sign 1' SE.

References:

	<u>Bearing</u>	<u>Distance</u>
1) Set 3/4"x6' round iron bar in marsh	N48E	35.24'
2) Set 3/4"x6' round iron bar in marsh	S67E	28.31'
3) Set 3/4"x24" round iron bar	S30W	40.64'
4) Set 3/4"x24" round iron bar	N17W	30.61'
5) Existing nail in cut off power pole now used as fence post (1996 tie)	N35E	7.10'

Compass bearings  
Trees double blazed



I, Harley A. Sime, do hereby certify that on the 10th day of September 19 79, I found (evidence) ~~(no evidence)~~ of the Northeast corner of Section 16, T 16 N, R 1 E, Fourth Principal Meridian, and I re-established said corner according to the Wisconsin Statutes as shown and described hereon.

Dated this 17th day of Feb. 1981.

**Approved: HARLEY A. SIME**  
**MONROE CO. SURVEYOR**  
Title

History of original corner establishment:

Gary Sime set a 3/4" iron bar at the occupied corner in July of 1976. James Carroll used this bar as the corner in his survey of November, 1976. Gary Sime again used this corner in a February, 1977 survey.

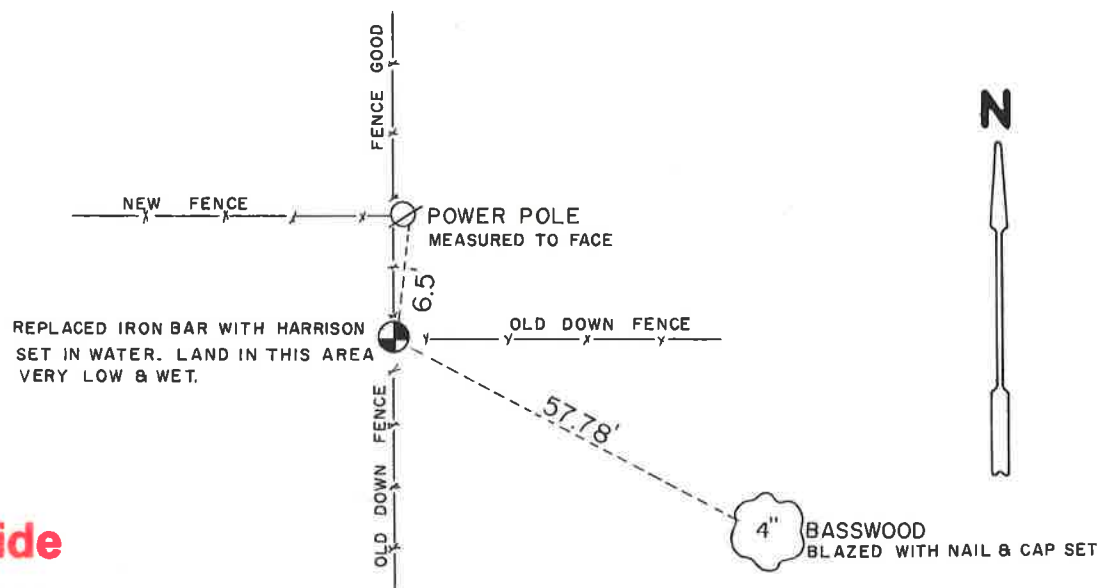
Description of corner evidence found:

Found the corner of record, removed the iron bar and replaced it with a Harrison marker. Accepted the corner as the best available evidence of the original government survey.

Description of corner and witness monuments, references and accessories used to perpetuate the original or re-established location of this corner:

Witnesses to corner location:

Pietz  
Tormoen



**See Reverse Side For Maintenance**

SURVEY CONTROL ORDER

Horizontal	_____
Vertical	_____

WISCONSIN COORDINATE SYSTEM

Corner	East (X)	North (Y)	Elevation (Z)	Zone
Control Sta. Name				

\_\_\_\_\_ or Town Clifton

County of Monroe

COUNTY SURVEYOR FORM NO. 1

I, Harley A. Sime, do hereby certify that on the 10th day of September 1979, I found (evidence) ~~(no evidence)~~ of the Northeast corner of Section 16, T16 N, R1 E, Fourth Principal Meridian, and I re-established said corner according to the Wisconsin Statutes as shown and described hereon.

History of original corner establishment:

Gary Sime set a 3/4" iron bar at the occupied corner in July of 1976. James Carroll used this bar as the corner in his survey of November, 1976. Gary Sime again used this corner in a February, 1977 survey.

Description of corner evidence found:

Found the corner of record, removed the iron bar and replaced it with a Harrison marker. Accepted the corner as the best available evidence of the original government survey.

UPDATE: Found the existing Harrison monument at this corner location lying loosely in a water-filled hole. The only bearing tree for this corner was gone. Gary Dechant had visited this corner just prior to our 9-19-96 visit, and had re-established this corner location. Four new corner ties were established.

See Reverse Side For Maintenance

Dated this 17th day of Feb. 1981.

Approved: **HARLEY A. SIME**  
**MONROE CO. SURVEYOR**

Description of corner and witness monuments, references and accessories used to perpetuate the original or re-established location of this corner: Douglas J. Malliet R.L.S. #1266 19 September 1996

Witnesses to corner location:

Pietz

Tormoen

COUNTY SURVEYOR FORM NO. 1



Set 1 1/2"x24" iron pipe with slant cut top, South side of first T-bar fence post West of power pole

re-set sign & post 1.2' North of monument

5.8' 13.09'

Set 1-1/8"x96" round iron bar in place of existing Harrison monument, up 0.8' in depression

N18°E - 22.70'

Set 1 1/2"x24" iron pipe with slant cut top, West side of first T-bar fence post North of power pole

existing fence line

power pole, #30, existing spike in SE face

N35°E - 7.10'

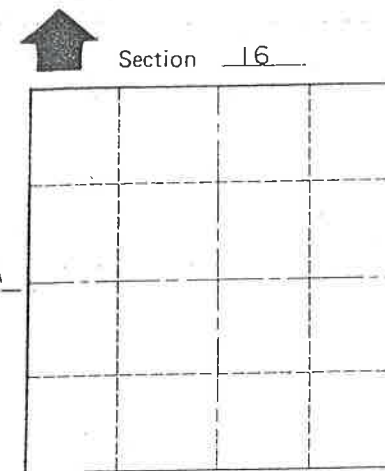
3.0' S20°E - 12.45'

center of flat spot on West side and top of anchor bolt for power pole

ancient fallen fence line

LOWLAND AREA

LOWLAND AREA



O = LOCATION CORNER

T 16 N R 1 E

WISCONSIN

Bearings are magnetic

SURVEY CONTROL ORDER

CREW: Douglas J. Malliet, R.L.S.  
Tim Wilson  
9-19-96

Horizontal

Vertical

WISCONSIN COORDINATE SYSTEM

Corner	East (X)	North (Y)	Elevation (Z)	Zone
Control Sta. Name				

or Town Clifton

County of Monroe

4434