

**U. S. Public Land Corner
Maintenance**

102


Corner: N1/4 Sec. 36, T16N-R1E

41601250020

<u>Date</u>	<u>Crew</u>	<u>Monument type</u>
August 25, 2022	Zachariah P. Dechant Gary L. Dechant	Existing Cast Iron TCP monument on east edge of trail. Sign 1' south.

<u>References:</u>	<u>Bearing</u>	<u>Distance</u>
1) Existing 1" iron pipe, placed stone over pipe (2006 tie)	N2W	36.28'
2) Set 3/4"x24" round iron bar, 5' NW of 16" Black Cherry, stone over bar	S42E	29.05'
3) Set 3/4"x24" round iron bar, 4' NE of 12" Triple Maple, stone over bar	S2W	18.70'
4) Existing 1" iron pipe on SE side of large stone, (2006 tie)	N72W	14.17'

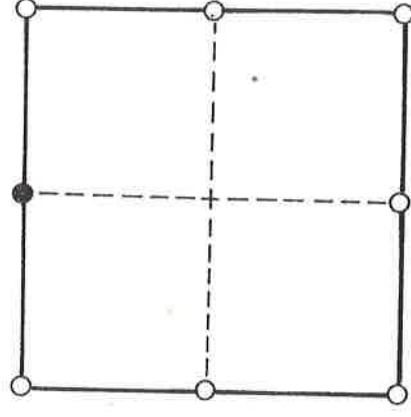
Compass bearings
Trees double blazed

Gary L. Dechant

August 26, 2022

CERTIFIED LAND CORNER

I do hereby certify that on the 18th day of October, 2006, I found (evidence) (~~no evidence~~) of the NW corner of Section 36, T 16 N, R 1 E 4th Principal Meridian, and I re-established said corner according to the Wisconsin Statutes as shown and described hereon.

SECTION 36



● = CORNER LOCATION

T 16 N R 1 E 4th

TOWN OF: Clifton

Gary L. Dechant



December 30, 2006

Witnesses to corner location:

Zachariah P. Dechant

Gary L. Dechant

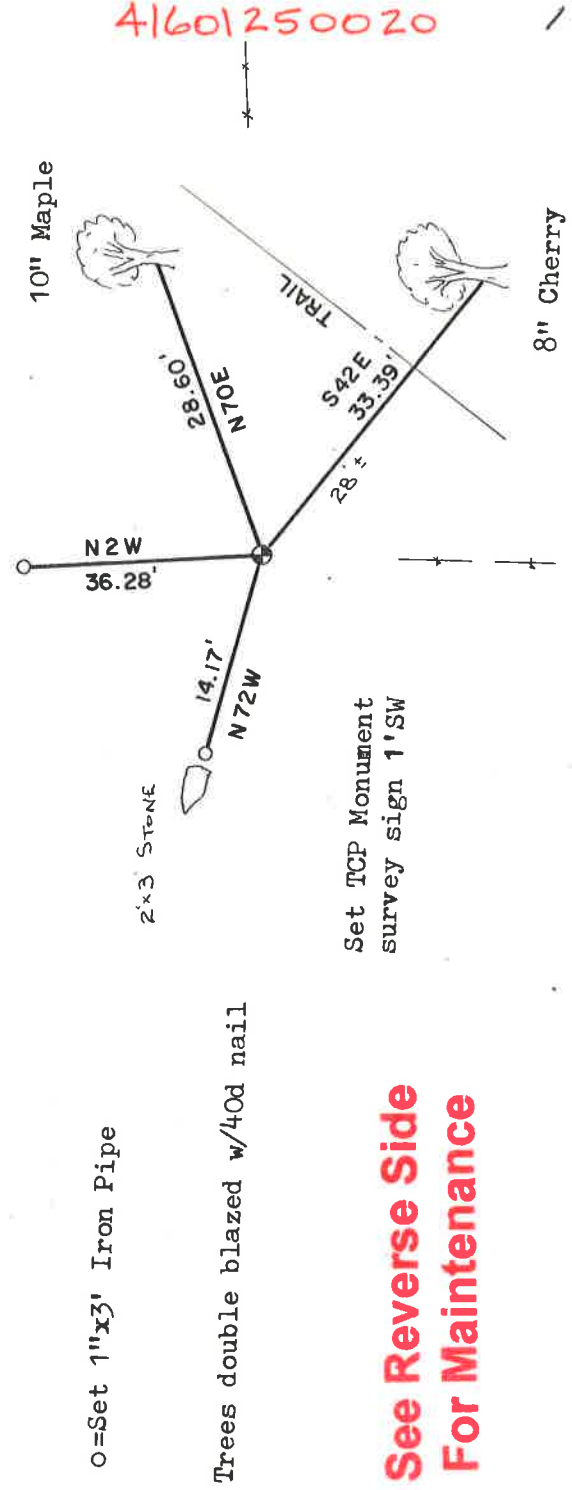
HISTORY OF CORNER:

No known recorded history since the original government survey.

DESCRIPTION OF CORNER EVIDENCE FOUND:

Set corner at remains of old fence intersection which is also on line between section corners. Fits interior forty corners very well.

DESCRIPTION OF CORNER AND WITNESS MARKERS:



See Reverse Side For Maintenance