

**U. S. Public Land Corner
Maintenance**

66

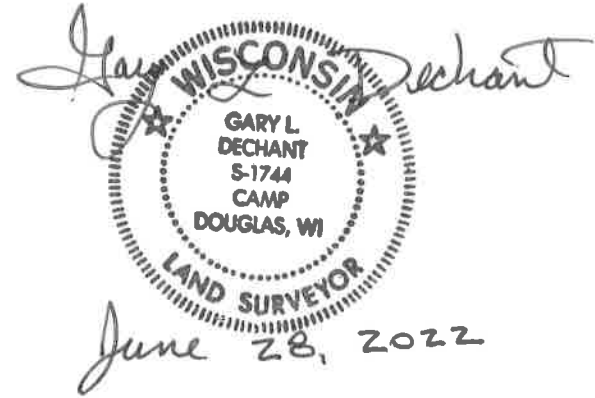
Corner: S1/4 Sec. 15, T16N-R1E

41601150020

<u>Date</u>	<u>Crew</u>	<u>Monument type</u>
June 27, 2022	Zachariah P. Dechant Gary L. Dechant	Found Harrison intact, sign 2' south

<u>References:</u>	<u>Bearing</u>	<u>Distance</u>
1) Set 3/4"x24" round iron bar, 5' SW 10" Red Oak	N58E	12.61'
2) Set 3/4"x24" round iron bar	S52E	38.76'
3) Set 3/4" x24" round iron bar, 5' NW of 11" White Pine	S15E	13.73'
4) Set 3/4"x24" round iron bar, 5' SE 14" White Pine (1993 bearing tree)	N34W	8.77'

Compass bearings
Trees double blazed



CERTIFICATE

CERTIFIED LAND CORNER

41601150020

No. 66

I, Gary L. Dechant, do hereby certify that on the 5th day of January 1993, I found (evidence) (no evidence) of the S4 corner of Section 15, T 16 N, R 1 E Fourth Principal Meridian, and I re-established said corner according to the Wisconsin Statutes as shown and described hereon.

Dated this 6th day of Jan. 1993.

Gary L. Dechant
Reg. Land Surveyor, S-1744
Title

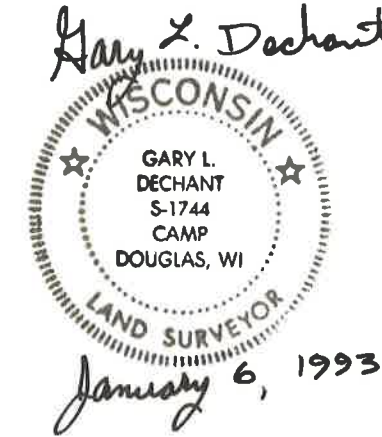
History of corner establishment since Original Government Survey

No known history since the original government survey.

Description of corner evidence found:

Set on line with projected fence from the east at a prorated distance between section corners.

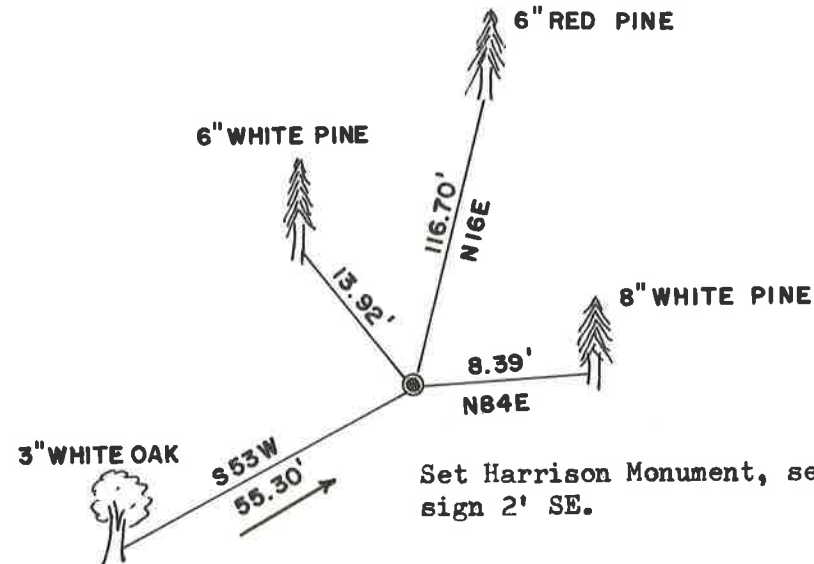
See Reverse Side For Maintenance



Description of corner and witness monuments, references and accessories used to perpetuate the original or re-established location of this corner:

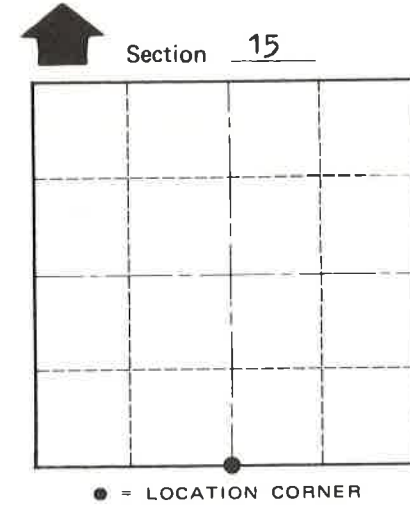
Witnesses to corner location:

David E. Madison
Gary L. Dechant



Set Harrison Monument, set survey sign 2' SE.

Trees double blazed with 20d nail set.



T 16 N R 1 E WISCONSIN

SURVEY CONTROL ORDER

Horizontal
Vertical

WISCONSIN COORDINATE SYSTEM

Table with columns: Corner, Control Sta. Name, East (X), North (Y), Elevation (Z), Zone

City, Village or Town Clifton
County of Monroe

COUNTY SURVEYOR FORM NO. 1