

**U. S. Public Land Corner
Maintenance**

64

Corner: S1/4 Sec. 14, T16N-R1E

41601140020

<u>Date</u>	<u>Crew</u>	<u>Monument type</u>
June 27, 2022	Zachariah P. Dechant Gary L. Dechant	Found Harrison intact, sign 1' north

<u>References:</u>	<u>Bearing</u>	<u>Distance</u>
1) Set 3/4"x24" round iron bar, 7' SW 18" Black Oak	N18E	52.63'
2) Set 3/4"x24" round iron bar, 5' NW of 12" Black Cherry, down 12"	S2E	13.62'
3) Set 3/4" x24" round iron bar, down 12" in field	S55W	16.48'
4) Set 3/4"x24" round iron bar, northerly edge of field	N20W	69.50'

Compass bearings
Trees double blazed



I, William C. Jung, do hereby certify that on the 29th day of March 19 78, I found (evidence) (~~no evidence~~) of the S¹/₄ corner of Section 14, T.16 N, R.1 E, Fourth Principal Meridian, and I re-established said corner according to the Wisconsin Statutes as shown and described hereon.

Dated this 21st day of Nov. 1978.

William C. Jung, R.L.S. 1323

County Surveyor's Office

Title

History of original corner establishment:

No known recorded history since the original government survey.

Description of corner evidence found:

Removed 3/4" iron bar and set Harrison Monument. Accepted occupied fence corner as best available evidence.

The iron bar had been set previously as a survey point.

See Reverse Side For Maintenance

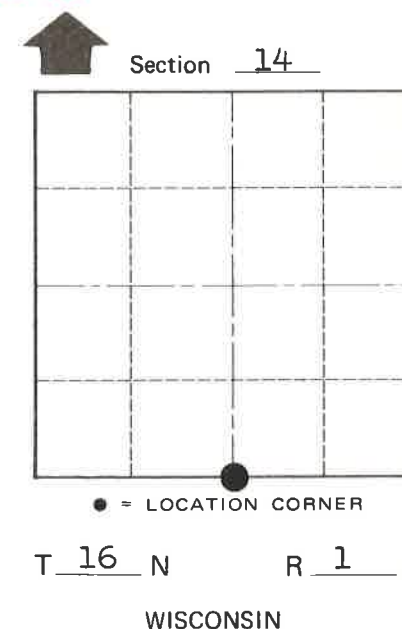
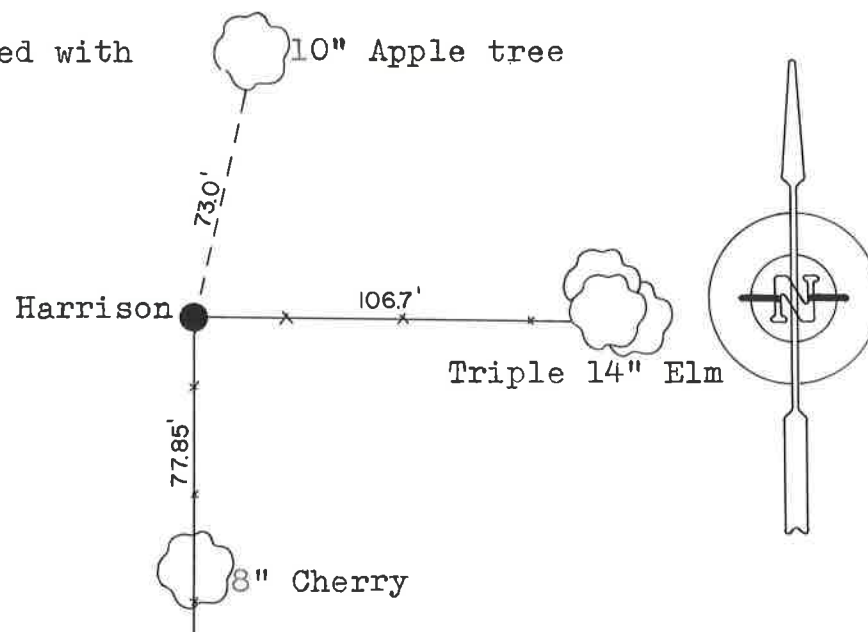
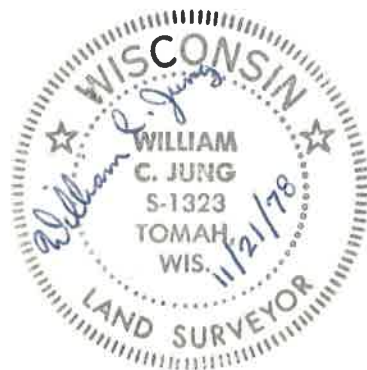
Description of corner and witness monuments, references and accessories used to perpetuate the original or re-established location of this corner:

Witnesses to corner location:

C. Pietz

G. Dechant

(All trees double blazed with N&C's set)



Approved by: Harley A. Sime
County Surveyor

SURVEY CONTROL ORDER

Horizontal	_____
Vertical	_____

WISCONSIN COORDINATE SYSTEM

Corner	East (X)	North (Y)	Elevation (Z)	Zone
Control Sta. Name				

City, Village or Town Clifton

County of Monroe

COUNTY SURVEYOR FORM NO. 1