

**U. S. Public Land Corner  
Maintenance**

# 41

Corner: SE Sec. 12, T16N-R1E

41601120000

<u>Date</u>	<u>Crew</u>	<u>Monument type</u>
June 24, 2022	Zachariah P. Dechant Gary L. Dechant	Found Harrison intact, 2' west of center of Krypton Road

<u>References:</u>	<u>Bearing</u>	<u>Distance</u>
1) Found 3/4" round iron bar, lowered 10"	N78E	28.18' (28.18')
2) Found 3/4" round iron bar, 3' north of DNR posts, down 8"	S32E	64.39' (64.39')
3) Set 3/4" x24" round iron bar, down 12" on edge of field	S78W	39.79'
4) Set 3/4" x24" round iron bar, down 12" on edge of field	N32W	60.40'

Compass bearings  
Trees double blazed  
Harrison & reference markers set on straight lines.

*Gary L. Dechant*  
  
*June 27, 2022*

JUNEAU COUNTY

Survey Monument Record

TYPE OF MONUMENT: HARRISON

STATE PLANE COORDINATES: N \_\_\_\_\_ E \_\_\_\_\_

ELEVATION — M.S.L. DATUM: \_\_\_\_\_

THETA ANGLE: \_\_\_\_\_

FIELD BOOK: \_\_\_\_\_ PAGE \_\_\_\_\_

BASIS FOR MONUMENT LOCATION

(Use reverse side if necessary)

Show info such as: History of corner, with reference to Vol. and pg. dates; surveyor; exact description of monument replaced; if location computed, by taped or EDM traverse; landowner remarks, etc.

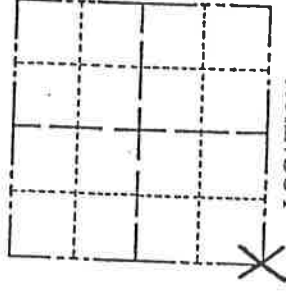
An extensive EDM traverse was run from the west county line to New Lisbon for the R/W Plat for the proposed relocation of C.T.H. "A".

This corner was established by the intersection of the extension of the north-south and the east-west fence lines.

The distance seem to fit with the section summary.

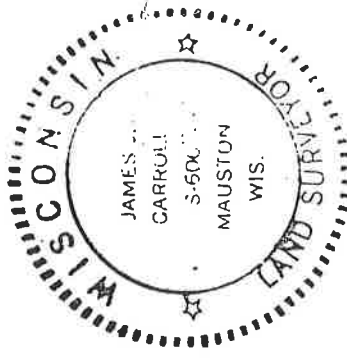
Accepted as the true corner location.

CORNER NO. 41  
SECTION 7  
TOWN 16  
RANGE 2E



LOCATION  
(Indicated by 'X')

SEAL:

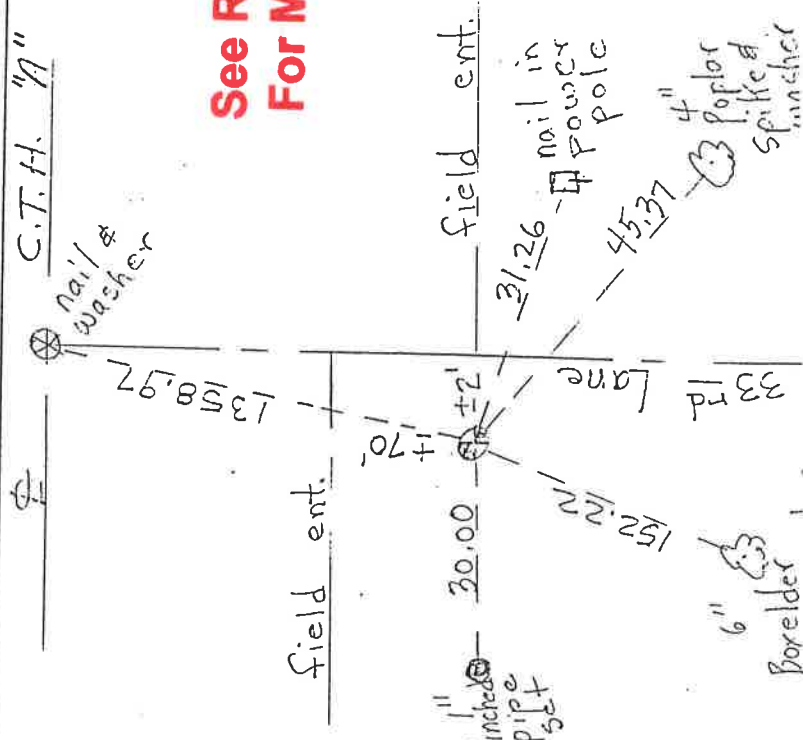


CERTIFIED CORRECT:

James J. Carroll  
Registered Land Surveyor  
DATE: June 9, 1984

TIE SKETCH

(Show at least four ties)



**See Reverse Side  
For Maintenance**

41601120000

Corner No. 41