

**U. S. Public Land Corner
Maintenance**

44

Corner: S1/4 Sec. 11, T15N-R1W

21501110020

<u>Date</u>	<u>Crew</u>	<u>Monument type</u>
August 11, 2022	Zachariah P. Dechant Gary L. Dechant	Found Harrison intact on line and equidistant between section corners as stated on 1995-96 tie sheet. However, the bearing trees shown on the 1995-96 tie sheet are for a point approximately 40' farther east. It seems the ties were mistakenly taken for a temporary, preliminary point. No fences remain in this area. Harrison location places the forty corner to the east 3' west of fence. Set sign 1' north. Corner falls in pastured field on south slope.

References:

	<u>Bearing</u>	<u>Distance</u>
1) Set 3/4"x24" round iron bar	N50E	18.57'
2) Set 3/4"x24" round iron bar	S58E	35.14'
3) Set 3/4"x24" round iron bar, 5' east of Cedar sapling	N75W	5.92'
4) Set 3/4"x24" round iron bar, 5' SE of 9" Shagbark Hickory	N60W	52.17'

Compass bearings
Trees double blazed



I, Bryan H. Meyer, do hereby certify that on the 24th day of March 1995, I found ~~(evidence)~~ (no evidence) of the South Quarter corner of Section Eleven (11), T15 N, R 1 W. Fourth Principal Meridian, and I re-established said corner according to the Wisconsin Statutes as shown and described hereon.

Dated this 19th day of Jan. 1996.

Bryan H. Meyer
Deputy County Surveyor
Registered Land Surveyor #1712
Title

History of corner establishment since Original Government Survey

O. R. Dahl visited this corner location while working in Section 14 in late March, 1871. Monroe County Surveyor Fred A. Holden was at this corner location in late November 1901 as part of his work in Section 11.

Description of corner evidence found:

I re-established this corner on line and equidistant between the Southeast and Southwest corners of Section 11, as per law.

**See Reverse Side
For Maintenance**



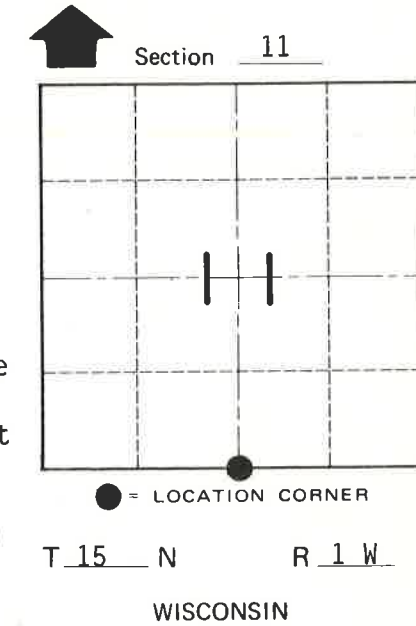
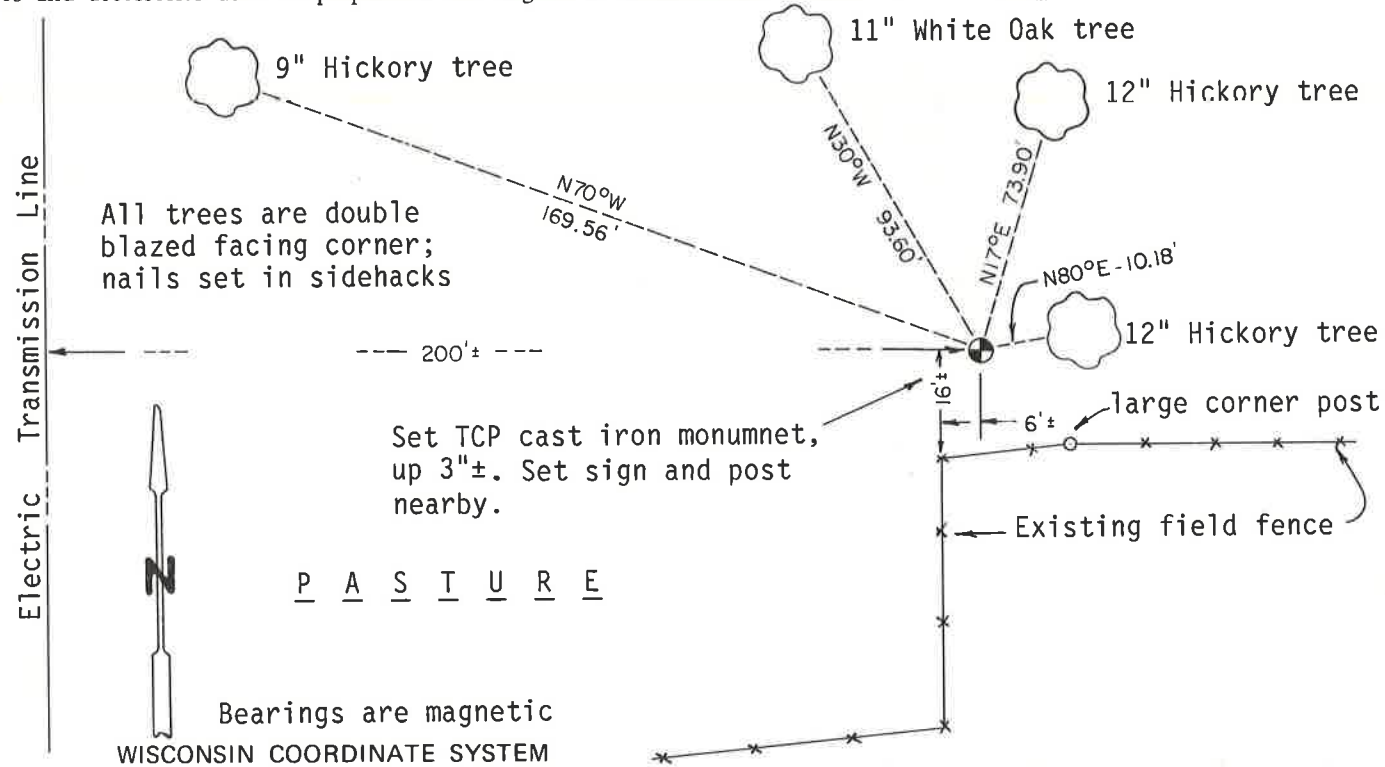
Bryan H. Meyer
H. A. Sime and Associates
P. O. Box 50
Tomah, Wisconsin 54660
Phone: (608)-372-5392

Description of corner and witness monuments, references and accessories used to perpetuate the original or re-established location of this corner:

Crew: Bryan Meyer, Don Cooper
Date: March 24, 1995

Witnesses to corner location:

Bryan H. Meyer
Donald A. Cooper



COUNTY SURVEYOR FORM NO. 1

SURVEY CONTROL ORDER

Horizontal	_____
Vertical	_____

Corner	East (X)	North (Y)	Elevation (Z)	Zone
Control Sta. Name				

City/Village/Town of Wellington
County of Monroe