

**U. S. Public Land Corner  
Maintenance**

# 45

Corner: SW Sec. 11, T15N-R1W

21501100000

<u>Date</u>	<u>Crew</u>	<u>Monument type</u>
August 13, 2022	Zachariah P. Dechant Gary L. Dechant	Found Harrison intact at north end of north-south fence. 6' east of ditch, 53' south of road, 2' NE of survey sign.

<u>References:</u>	<u>Bearing</u>	<u>Distance</u>
1) Existing 11/16" round iron bar in centerline of Minnow Avenue	North	52.61' (52.46)
2) Set 3/4"x24" round iron bar	N78E	22.42'
3) Reset disturbed Davy axle, 2' south fence corner	South	50.00'
4) Set 3/4"x24" round iron bar	N80W	17.24'

Compass bearings  
Trees double blazed



I, William C. Jung, do hereby certify that on the 23rd day of April 1984, I found (evidence) ~~(no evidence)~~ of the Southwest corner of Section 11, T15 N, R 1 W Fourth Principal Meridian, and I re-established said corner according to the Wisconsin Statutes as shown and described hereon.

Dated this 26th day of April 1984.

William C. Jung

Deputy County Surveyor, R.L.S. 1323  
Title

History of corner establishment since Original Government Survey

O.R. Dahl was at this corner in March of 1871. Fred Holden was at this corner in November of 1901. H. LaRue was at this corner around 1902. All of these surveyors found the same original bearing tree. Frank Davy set an axle at this original corner in November of 1926.

Description of corner evidence found:

I found Davy's axle, removed it and replaced it with a Harrison marker

See Reverse Side For Maintenance



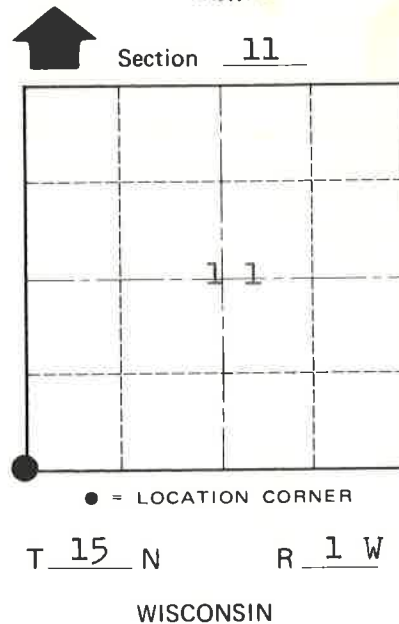
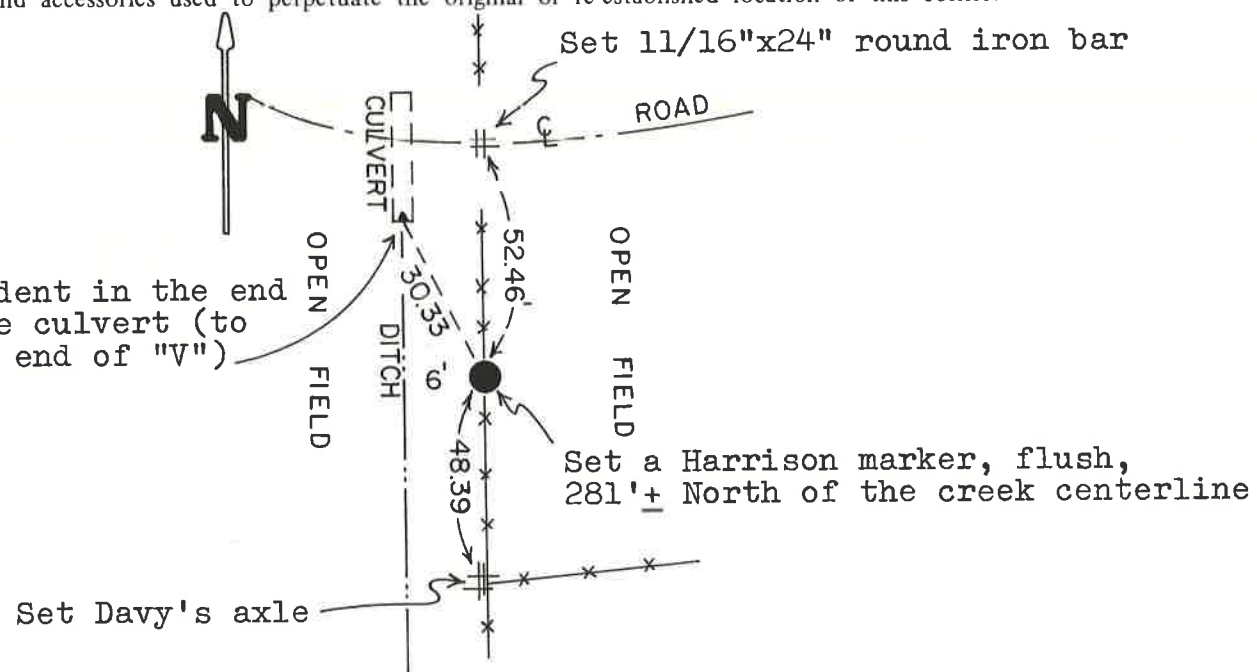
Description of corner and witness monuments, references and accessories used to perpetuate the original or re-established location of this corner:

Witnesses to corner location:

William C. Jung

Bryan Meyer

To a dent in the end of the culvert (to North end of "V")



Approved: **HARLEY A. SIME**  
**MONROE CO. SURVEYOR**

SURVEY CONTROL ORDER

Horizontal	_____
Vertical	_____

WISCONSIN COORDINATE SYSTEM

Corner	East (X)	North (Y)	Elevation (Z)	Zone
Control Sta. Name				

City, Village or Town Wellington

County of Monroe

Wisconsin

COUNTY SURVEYOR FORM NO. 1