

**U.S. PUBLIC LAND CORNER
MAINTENANCE**

#57

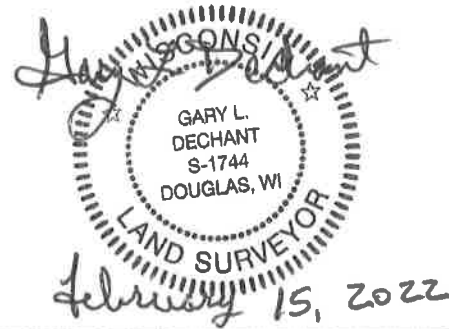
Corner ID: E1/4 Sec. 16, T19N-R1E

41901162000

<u>DATE</u>	<u>CREW</u>	<u>MONUMENT INFO</u>
February 9, 2022	Zachariah P. Dechant Gary L. Dechant	Found Harrison intact. Verified by 1985 bearing trees, White Pine N31E, 42.6' & White Pine S86W, 13.37'. 1 1/4" iron pipe on north side of Harrison. Set sign 1' north. There is a 16" White Pine 2' south of corner.

	<u>Bearing</u>	<u>Distance</u>
1) Set 3/4"x 24"" round iron bar 4' SW of 15" White Pine (1985 BT)	N31E	37.45'
2) Set 3/4"x 24"" round iron bar 4' west of 9" White Pine	S80E	24.52'
3) Set 3/4"x24" round iron bar 4' NE of 3" White Oak	S60W	41.01'
4) Set 3/4"x24" round iron bar 4' South of 3" White Oak	N2W	33.76'

Compass bearings
Trees double blazed



41901162000

I, GARY L. DECHANT, do hereby certify that on the 16 day of FEBRUARY 1985, I found (evidence) (~~no evidence~~) of the E 1/4 corner of SECTION 16, T. 19 N, R. 1E Fourth Principal Meridian, and I re-established said corner according to the Wisconsin Statutes as shown and described hereon.

History of corner establishment since Original Government Survey

FRED HOLDEN WAS HERE IN SEPT. OF 1903.

See Reverse Side For Maintenance

Dated this 4 day of MARCH 1985.

Gary L. Dechant
REGISTERED LAND SURVEYOR, S-1744
Title

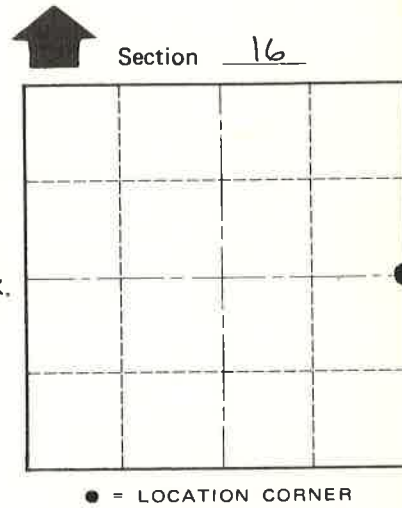
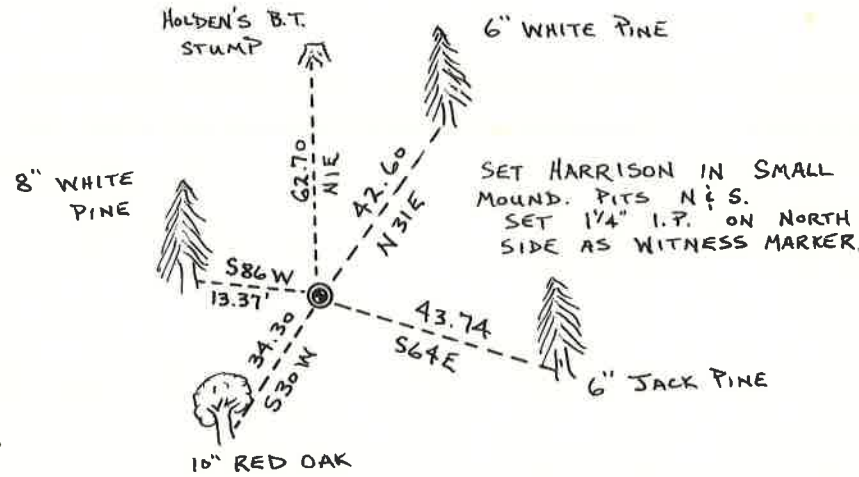
Description of corner evidence found:

FOUND HOLDEN'S B.T., NOW ROTTED STUMP. SET CORNER AT GIVEN DISTANCE AND BEARING IN HIS NOTES. FITS BOTH NE (COMPUTED CORNER) AND SE CORNER (SET FROM ORIG. B.T. STUMP) EXTREMELY WELL. ALSO ON A STRAIGHT LINE WITH SEC. CORNERS WITHIN 5'±.

Description of corner and witness monuments, references and accessories used to perpetuate the original or re-established location of this corner:

Witnesses to corner location:

DANNY L. DRAEGER D/D
GARY L. DECHANT D/D



(TREES DOUBLE BLAZED WITH R.R. SPIKES SET)

SURVEY CONTROL ORDER

Horizontal _____
Vertical _____

WISCONSIN COORDINATE SYSTEM

Corner	East (X)	North (Y)	Elevation (Z)	Zone
Control Sta. Name				

City, Village or Town SCOTT
County of MONROE

COUNTY SURVEYOR FORM NO. 1