

U. S. PUBLIC LAND CORNER  
MAINTENANCE

#4

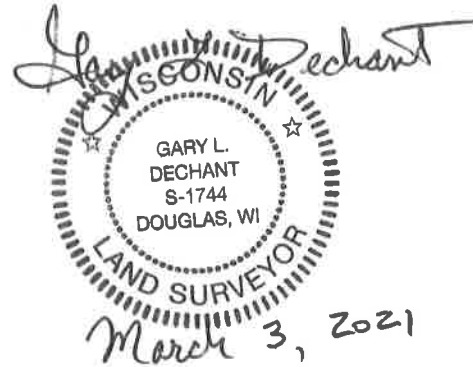
Corner ID: N1/4 Sec. 2. T18N-R1W

21901350020

<u>DATE</u>	<u>CREW</u>	<u>Monument Info</u>
March 3, 2021	Al Hoff Gary L. Dechant	Found 1 1/4" iron pipe up 1' in swamp, Set sign 1' north.

- |  | <u>Bearing</u> | <u>Distance</u> |
|--|----------------|-----------------|
| 1) Set 2' section of steel fence post in center of turn-around on dike | N5°52'19"E     | 551.16'         |
| 2) Set 2' section of steel fence post on dike                          | N11°28'40"W    | 446.11'         |

County coordinate system



CERTIFICATE

CERTIFIED LAND CORNER

**See Reverse Side  
For Maintenance**

I, Harley A. Sime, do hereby certify that on the 13th day of February 19 76, I found ~~(evidence)~~ (no evidence) of the North 1/4 corner of Section 2, T. 18 N, R. 1 W Fourth Principal Meridian, and I re-established said corner according to the Wisconsin Statutes as shown and described hereon.  
Dated this 16th day of Feb. 19 76.

History of original corner establishment:

Description of corner evidence found:

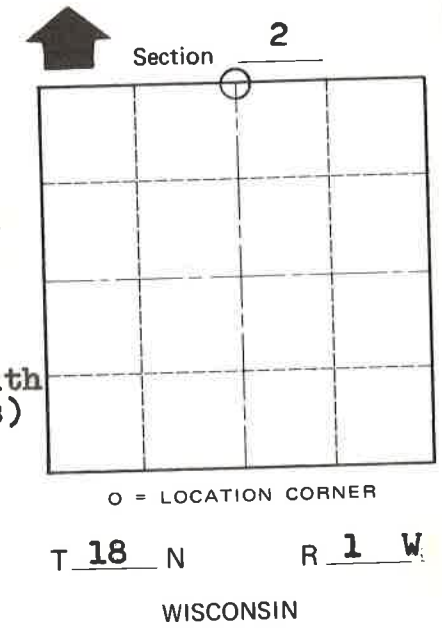
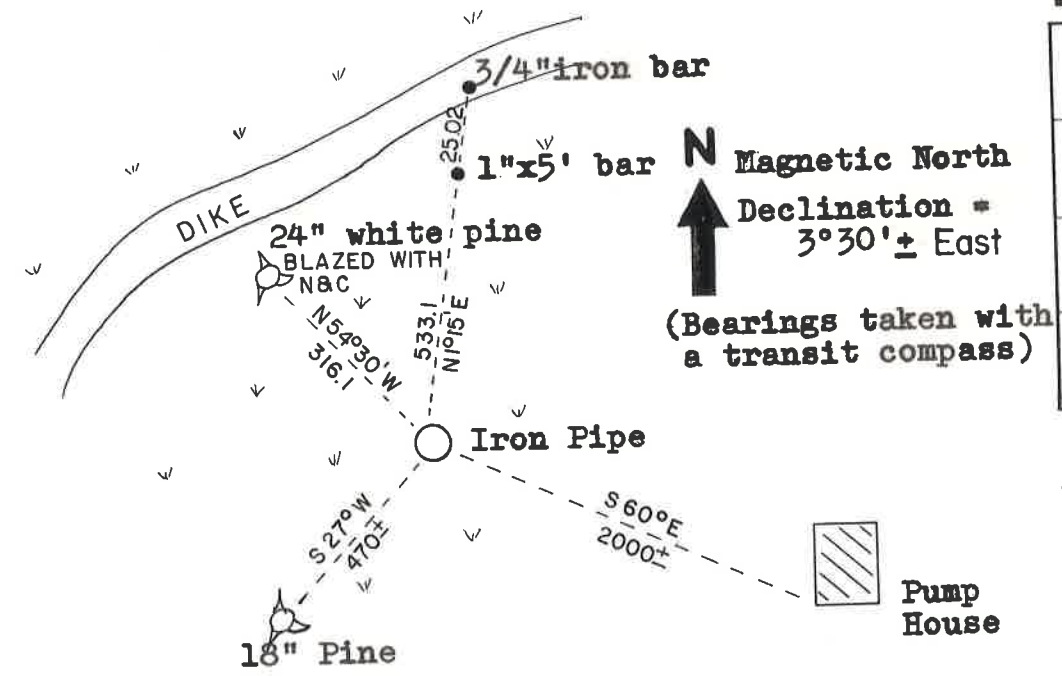
**Set the corner on line and proportionately between the N.E. corner of Section 2 and the North 1/4 of Section 3.**

Harley A. Sime  
County Surveyor  
Title

COUNTY SURVEYOR FORM NO. 1

Description of corner and witness monuments, references and accessories used to perpetuate the original or re-established location of this corner:  
**Set a 2 1/2"x6' iron pipe in the swamp, up 18".**

Witnesses to corner location:  
W.C. Jung-Crew Chief *W.C. Jung*  
L. Feddersen



SURVEY CONTROL ORDER

Horizontal	_____
Vertical	_____

WISCONSIN COORDINATE SYSTEM

Corner	East (X)	North (Y)	Elevation (Z)	Zone
Control Sta. Name				

City, Village or Town La Grange  
County of Monroe