

Thank you for using a Monroe County Fishing Easement!

Easement Rules:

- The Easement extends 33' on each side of the stream (or up to the participating landowners property line)
- Travel is limited to foot traffic only
- Only fishing is allowed in the easement areas, all other activities require landowner permission
- The easements are on private property, please be respectful

Easement Maps:

- Locations of easements are now mapped on the OnX Hunt App! If you are an OnX subscriber, simply turn on the “WI Government Lands” layer on the app and see all of the fishing easements in the county!
- Easements are also now mapped on the TroutRoutes App! If you are a TroutRoutes subscriber, simply turn on the “Access” layer to see all of the fishing easements!
 - TIP: Parts of Monroe County have limited cell phone signal, so plan ahead and utilize the “Offline Maps” tool on OnX and TroutRoutes to locate fishing easements even if you are out of range!
- Monroe County’s easement locations are also mapped on the county’s website! Follow this link to and click on “Trout Stream & Kayak” to find fishing easements on your web browser for free.
 - <https://www.co.monroe.wi.us/departments/land-information-office/online-map-gallery/-fsiteid-1#!/>
- **The last few pages of this document have maps of easements and public fishing spots in your area!**

Wisconsin Stream Access Law:

- Wisconsin allows public access of any navigable waterway in the state. Even if a stream flows through private property, as long as you are wading in the stream, you are on public property!

Trout Fishing Regulations:

- Different streams have different regulations on bag limits, minimum size requirements, species specific requirements, and tackle restrictions. Be sure to refer to the current DNR Trout Fishing Regulations for the stream you are fishing on.

Please take our 5 minute survey about the Monroe County Fishing Easements! The survey link can be found at this page:

<https://www.co.monroe.wi.us/departments/land-conservation/fishing-easement>

Do you want some more helpful info? Keep scrolling!

Looking for another spot to fish? Check out the last few pages to find maps of easements and public fishing spots near where you are now!

Having trouble catching fish? Try one of our suggested lures or a quick tip listed below to see if we can help turn your luck around!

Spin Tackle Suggestions from Bryce, Monroe County LCD

(35 years of experience fishing trout in the Driftless Region):



#1

#1: Mepps XD Size 2 or 3. Gold body with gold or patterned blade. Best if fished casting upstream and retrieving with the current.



#2

#2: Panther Martin Size 3 with black and yellow body. Best if fished casting upstream and retrieving with the current.



#3

#3: Floating Rapala Size 5. Natural colors or black/silver are proven winners. Can be fished both upstream and downstream. A little more depth if cast downstream and retrieved upstream.

Bryce's Quick Tips:

- Spinners work best early and late in the day as well as if the water is just a little off color following a small rain event.
- I like the spinners with the shaft going through the blade, this allows them to spin easily when retrieving with the current.
- Rapalas work great in pools or the base of riffles.
- I like using a 6' ultra-light rod/reel with a 4 lb monofilament line

Fly Tackle Suggestions from Ben, Monroe County LCD

(15 years of experience fly fishing in the Driftless Region):



#1



#2



#3



#4

#1: Leech pattern. This is an all-around good pattern, very versatile. I have luck with this throughout the season, regardless of different hatches.

#2: Sparkle Minnow: If you want to target big brown trout, this is a good choice. I have had luck with multiple color patterns but my go-to is white or bronze. This is another fly that can be productive all season.

#3: Woolly Bugger: This is a go-to presentation for many fishermen around the country. A larger size can be used to target larger fish, but I've also caught some energetic small fish on this fly. My preferred color is the green color in the above picture, but again, I've had luck on multiple colors.

#4: Grasshopper: Flies 1-3 are good patterns throughout the season, however, the hopper is specific to the later season (August-season close). This is a fun top water to use! I tend to stick to more natural colors with the hoppers (a mix of dark green, grey, brown), but you may have luck with a different color as well!

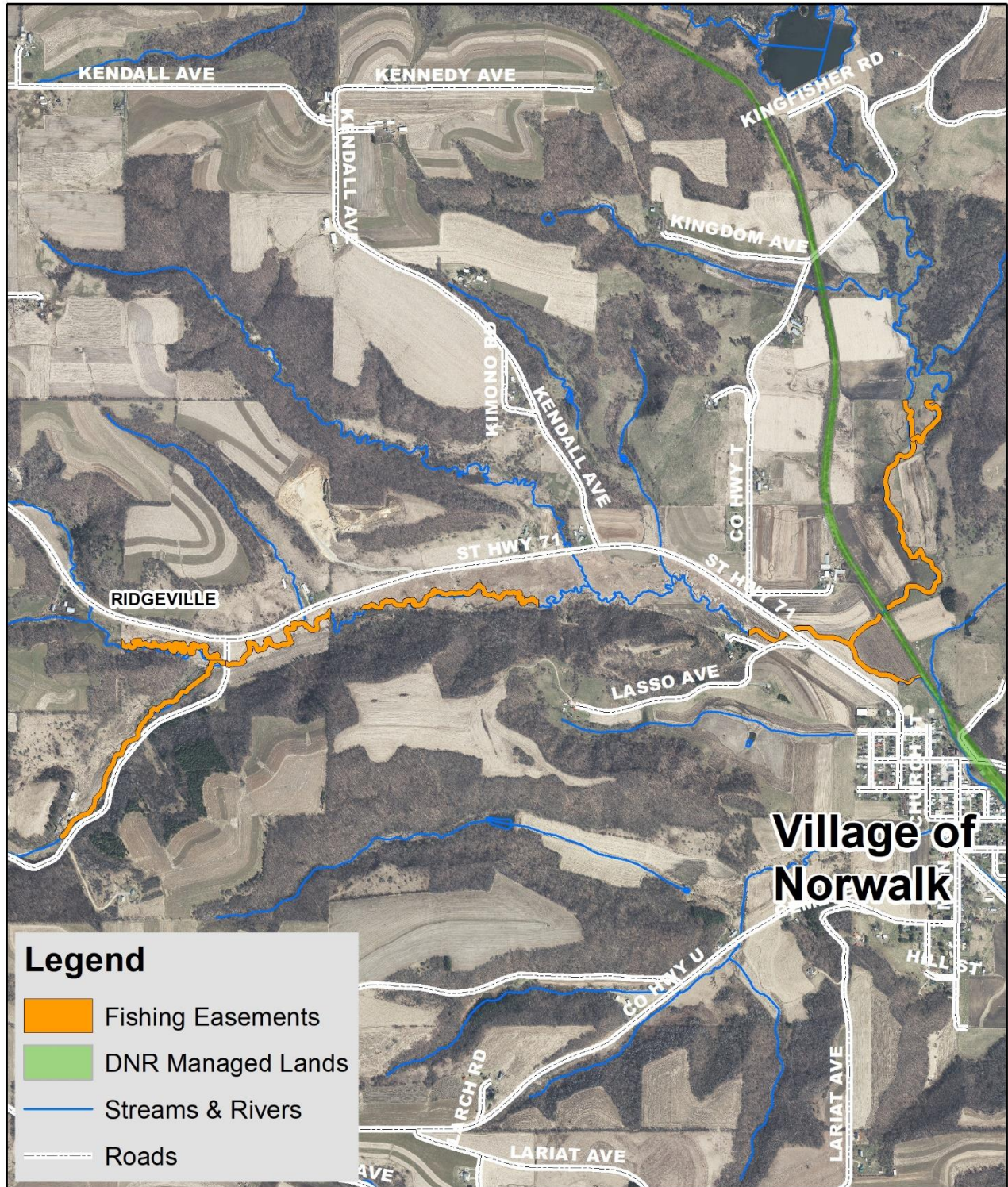
Ben's Quick Tips:

- If you use flies 1-3, or any other wet flies, I'd recommend using a sinking line with a fast shooting head. When working the pools behind the riffles, it's important to get that fly deeper in the fast water.
- Fly fishing with trees and brush overhead is a pain. I like to do a slingshot cast to accurately present my flies to the fish, and not to the trees!
- Don't discount the slow water. Late evening can be a very productive time with poppers and dry flies in the slower water pools!

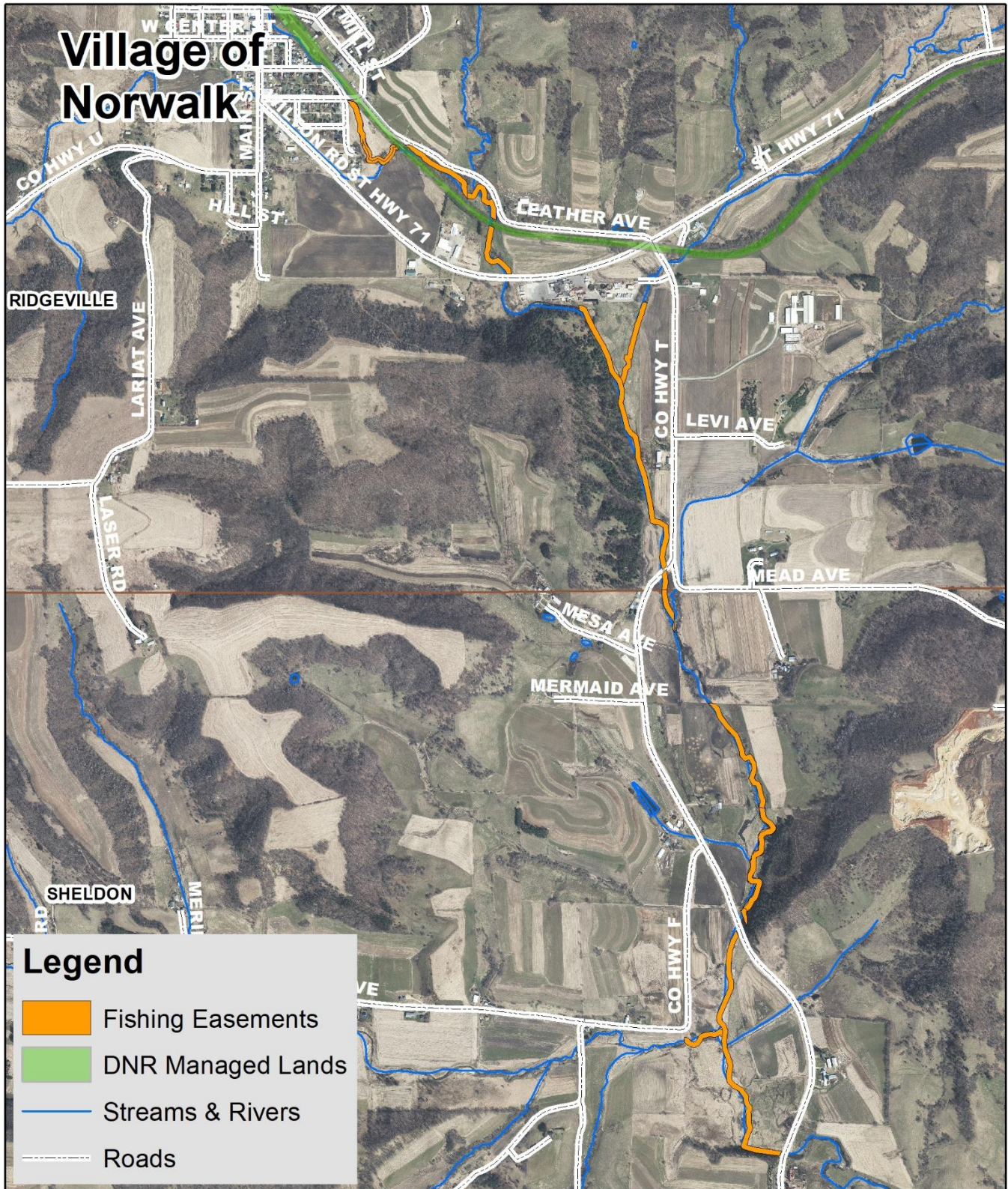
If you are traveling from outside the area, please support our locally owned, small businesses!

Maps of Other Easements in Your Area!

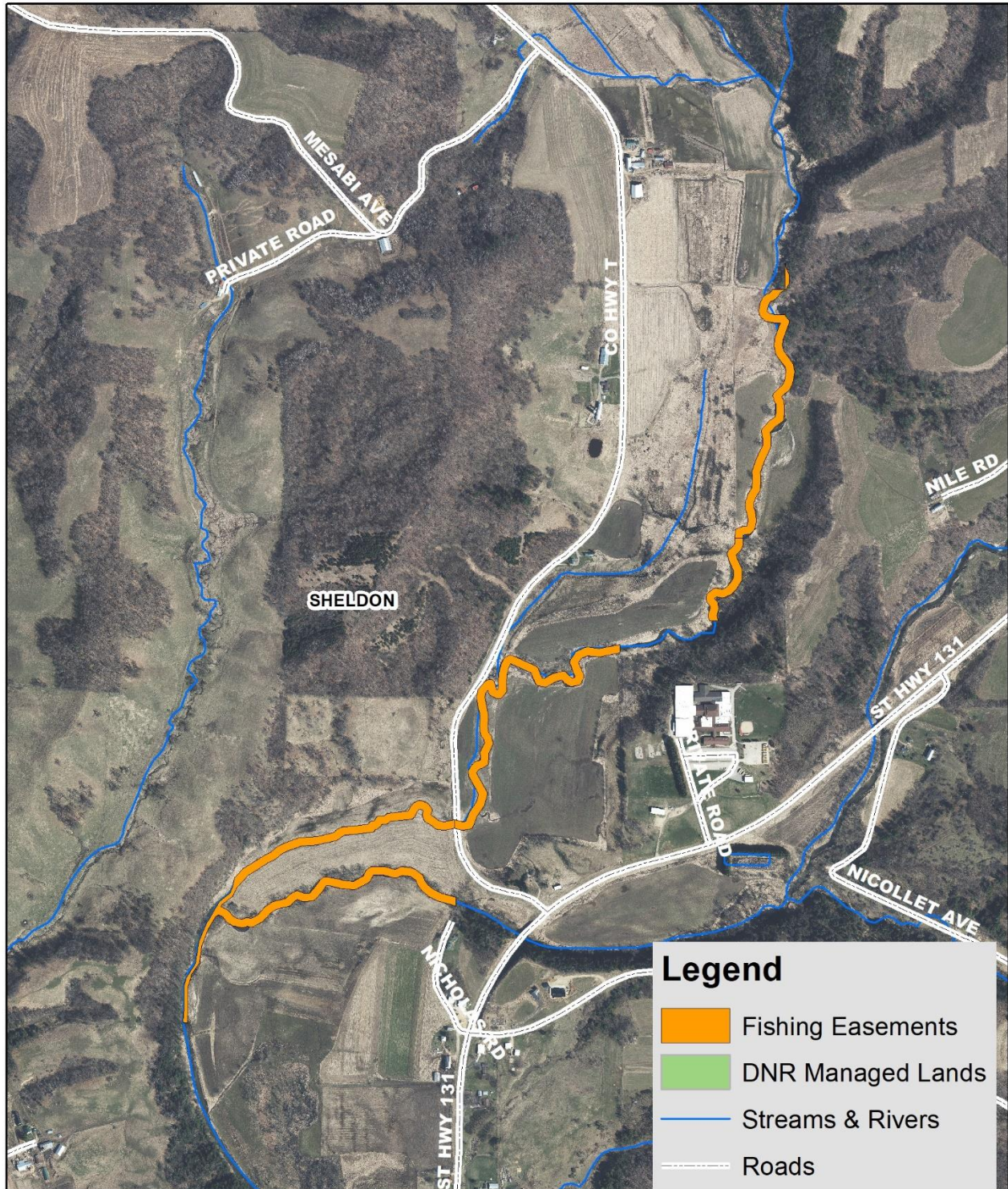
Upstream of Norwalk Easement Locations



Moore Creek Downstream of Norwalk Easement Locations



Moore Creek/Kickapoo River Easement Locations



We wish you a safe and successful outing on Monroe County
Streams!