

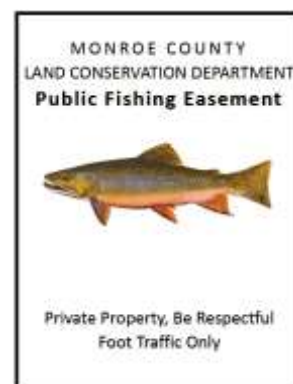
# Monroe County Fishing Easements 2022



## Your complete guide to Monroe County Fishing Easement Locations

Provided by the Monroe County Land Conservation Department

Effective Date: 4/6/2022



# Monroe County Fishing Easement Program Overview

## Easement Rules:

- The easement extends 33' on each side of the stream (or up to the participating landowners property line)
- Travel is limited to foot traffic only
- Only fishing is allowed in the easement areas, all other activities require landowner permission
- The easements are on private property, please be respectful.

## Online Easement Maps:

- Locations of easements are now mapped on the OnX Hunt App! If you are an OnX subscriber, simply turn on the “WI Government Lands” layer on the app and see all of the fishing easements in the county!
- Easements are also now mapped on the TroutRoutes App! If you are a TroutRoutes subscriber, simply turn on the “Access” layer to see all of the fishing easements!
  - ⇒ TIP: Parts of Monroe County have limited cell phone signal, so plan ahead and utilize the “Offline Maps” tool on OnX and TroutRoutes to locate fishing easements even if you are out of range!
- Monroe County’s easement locations are also mapped on the county’s website! Follow this link to and click on “Trout Stream & Kayak” to find fishing easements on your web browser for free.
  - ⇒ <https://www.co.monroe.wi.us/departments/land-information-office/online-map-gallery/-fsiteid-1#!/>

## Wisconsin Stream Access Law:

- Wisconsin allows public access of any navigable waterways in the state. Even if a stream flows through private property, as long as you are wading in the stream, you are on public property!

## Trout Fishing Regulations:

- Different streams have different regulations on bag limits, minimum size requirements, species specific requirements, and tackle restrictions. Be sure to refer to the current DNR Trout Fishing Regulations for the stream you are fishing on.

**Disclaimer:** These maps are not guaranteed to be accurate, correct, current, or complete and conclusions drawn are the responsibility of the user.

MONROE COUNTY  
LAND CONSERVATION DEPARTMENT  
**Public Fishing Easement**



Private Property, Be Respectful  
Foot Traffic Only

**Look for the signs!**

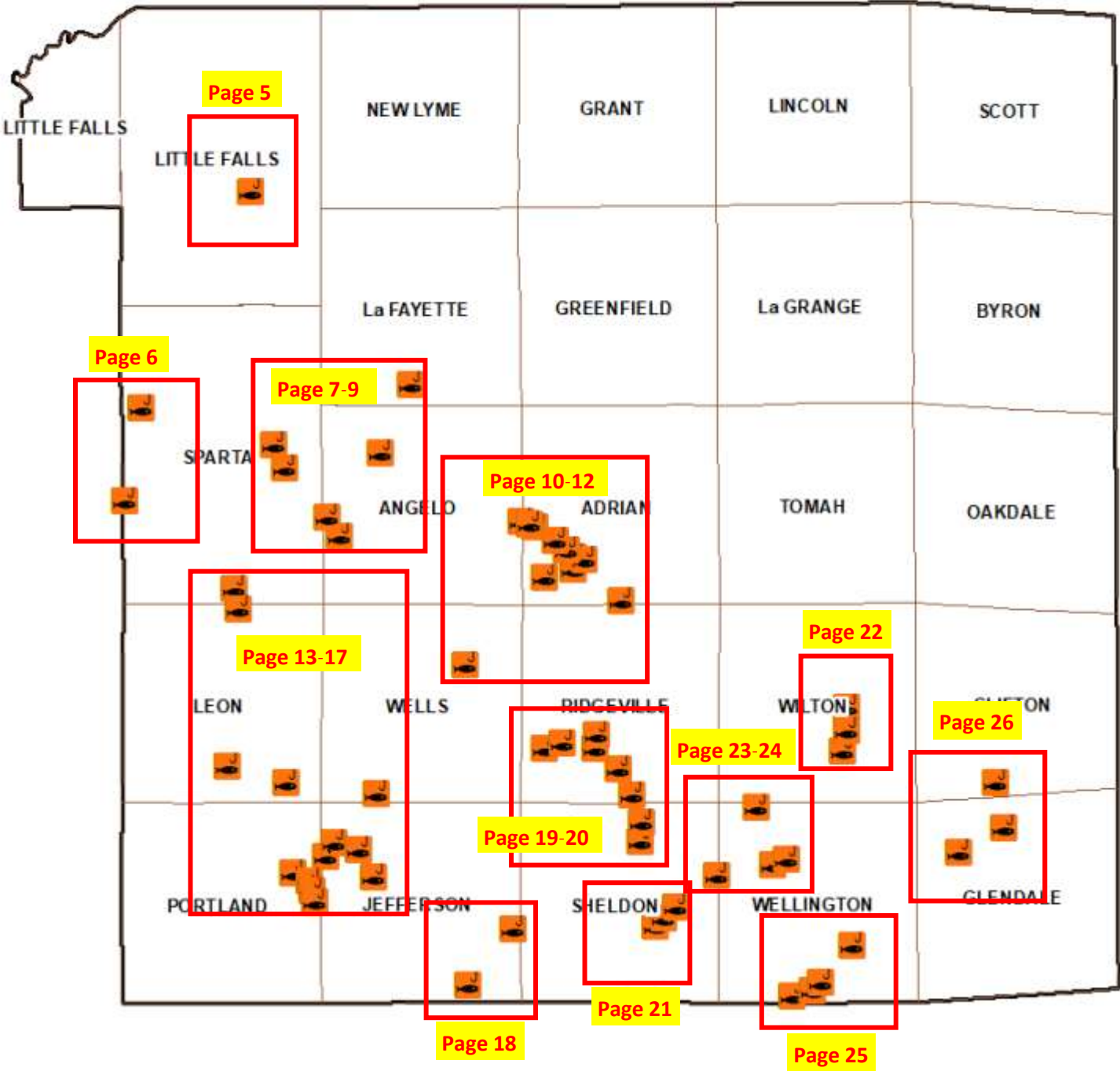
**Please help us out by taking a 5 minute survey about our fishing easements! Link below:**

<https://www.co.monroe.wi.us/departments/land-conservation/fishing-easement>

# Index

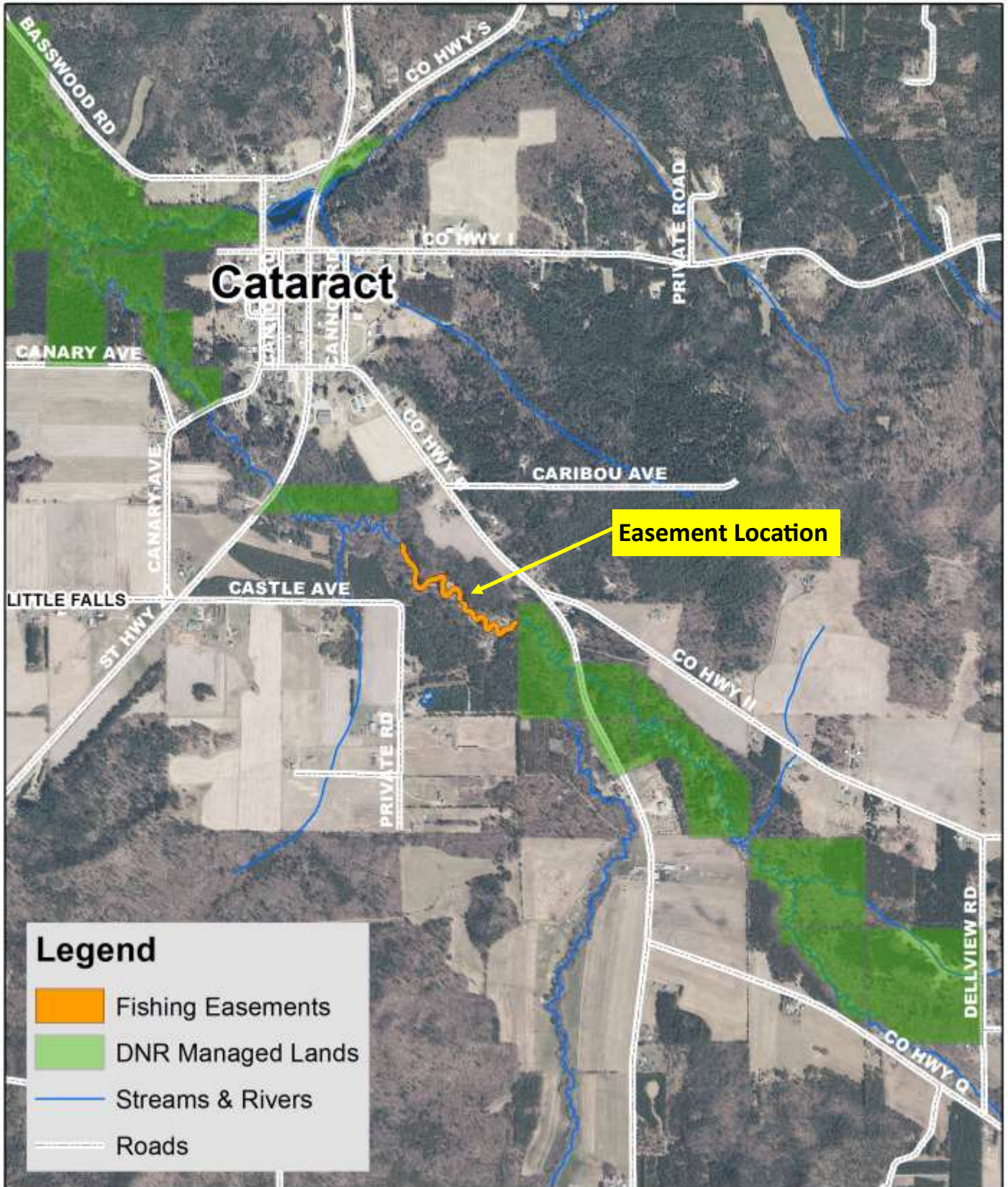
- **Page 4:** Countywide Easement Map
- **Page 5:** Big Creek & Soper Creek
- **Page 6:** Upper Big Creek
- **Page 7:** Bailey Creek
- **Page 8:** Beaver & Silver Creek
- **Page 9-10:** Farmers Valley Creek
- **Page 11-12:** Coles Valley Creek
- **Page 13-15:** Little La Crosse River
- **Page 16:** Cannon Valley and Pleasant Valley Creek
- **Page 17:** Halls Valley Creek
- **Page 18:** Brush Creek
- **Page 19:** Moore Creek Upstream of Norwalk
- **Page 20-21:** Moore Creek & Kickapoo River
- **Page 21-24:** Kickapoo River
- **Page 25:** Billings Creek
- **Page 26:** Upper Baraboo River

# Countywide Easement Locations

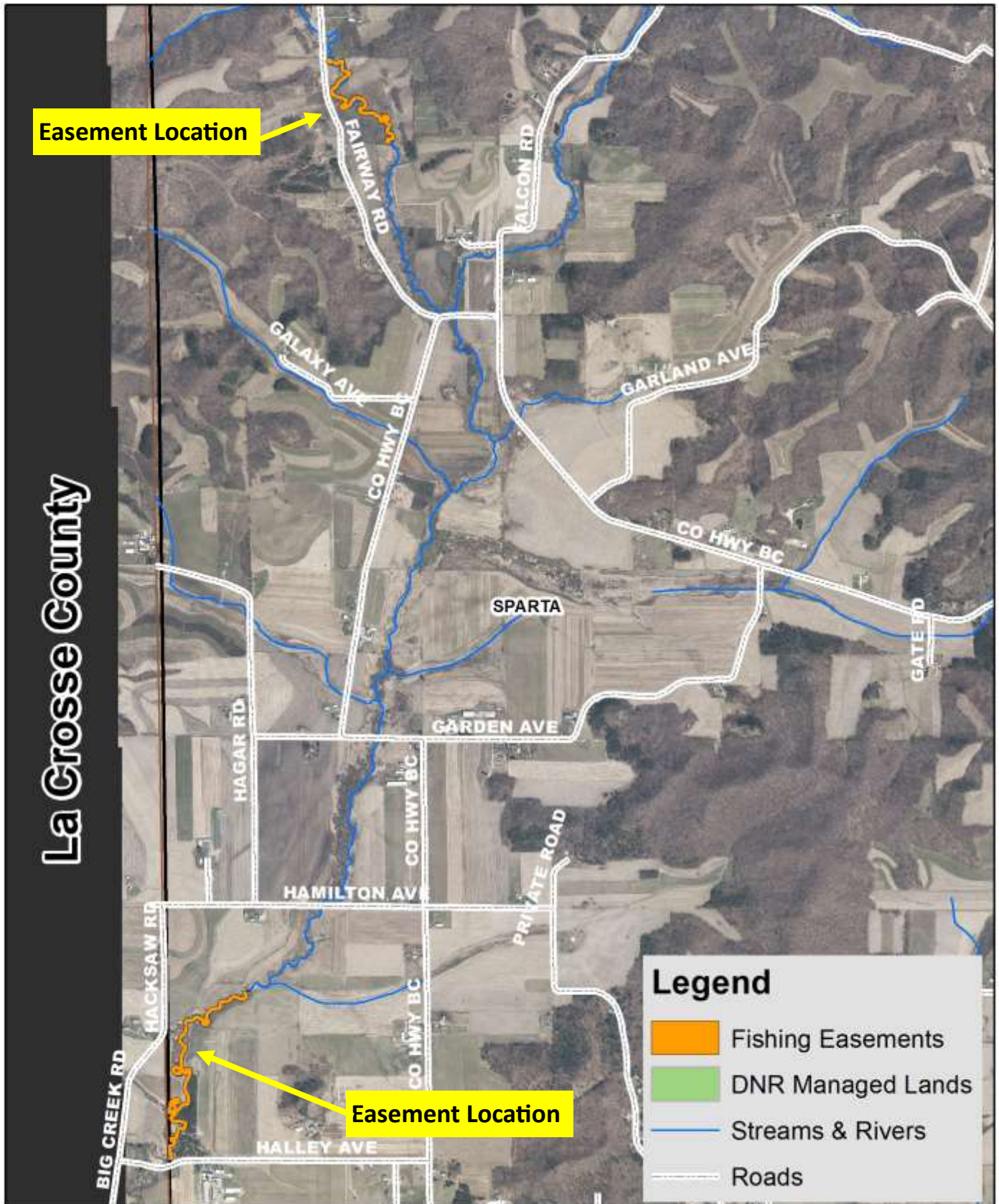


Easement Locations

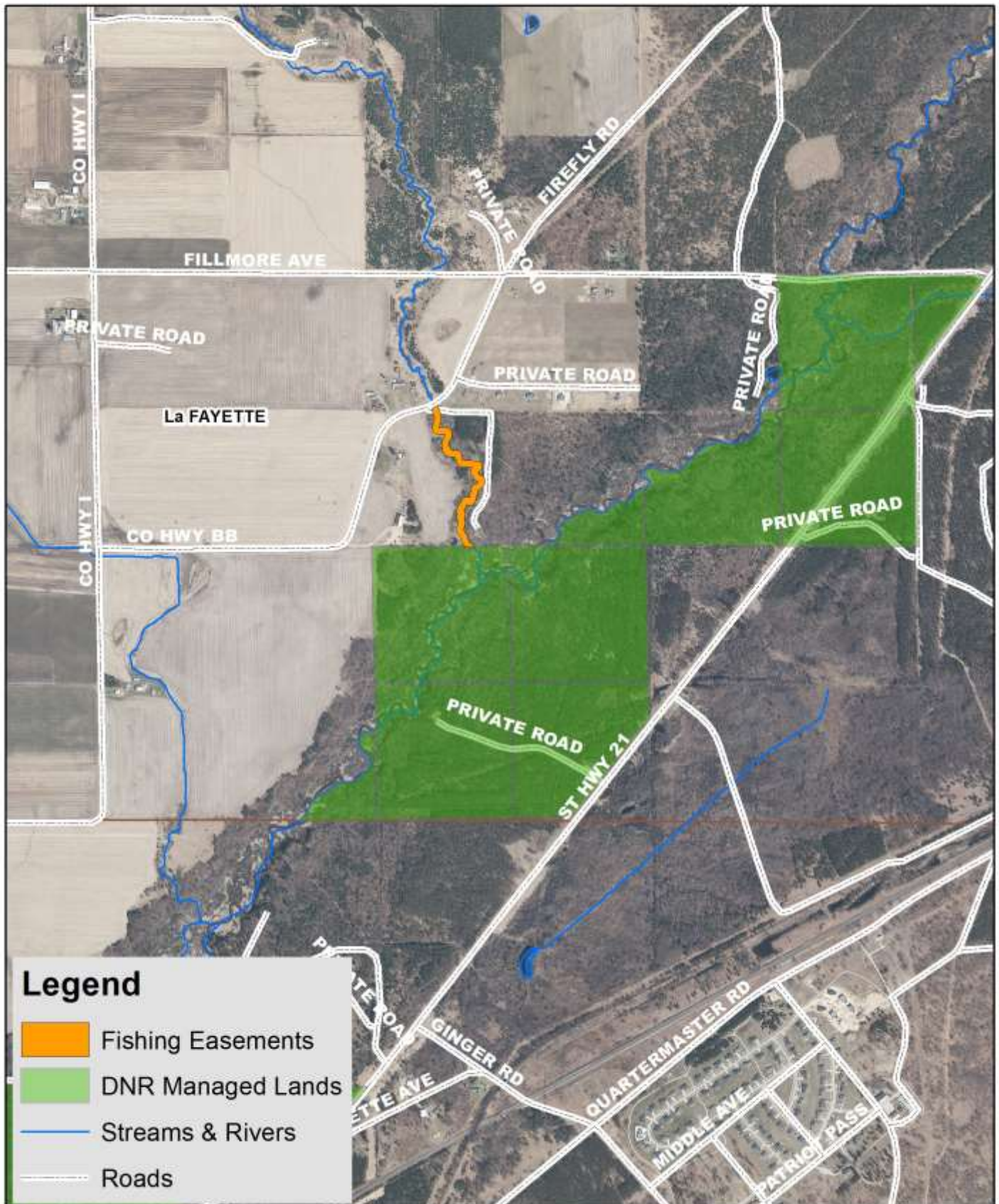
# Big Creek & Soper Creek Easement Locations



# Upper Big Creek Easement Locations

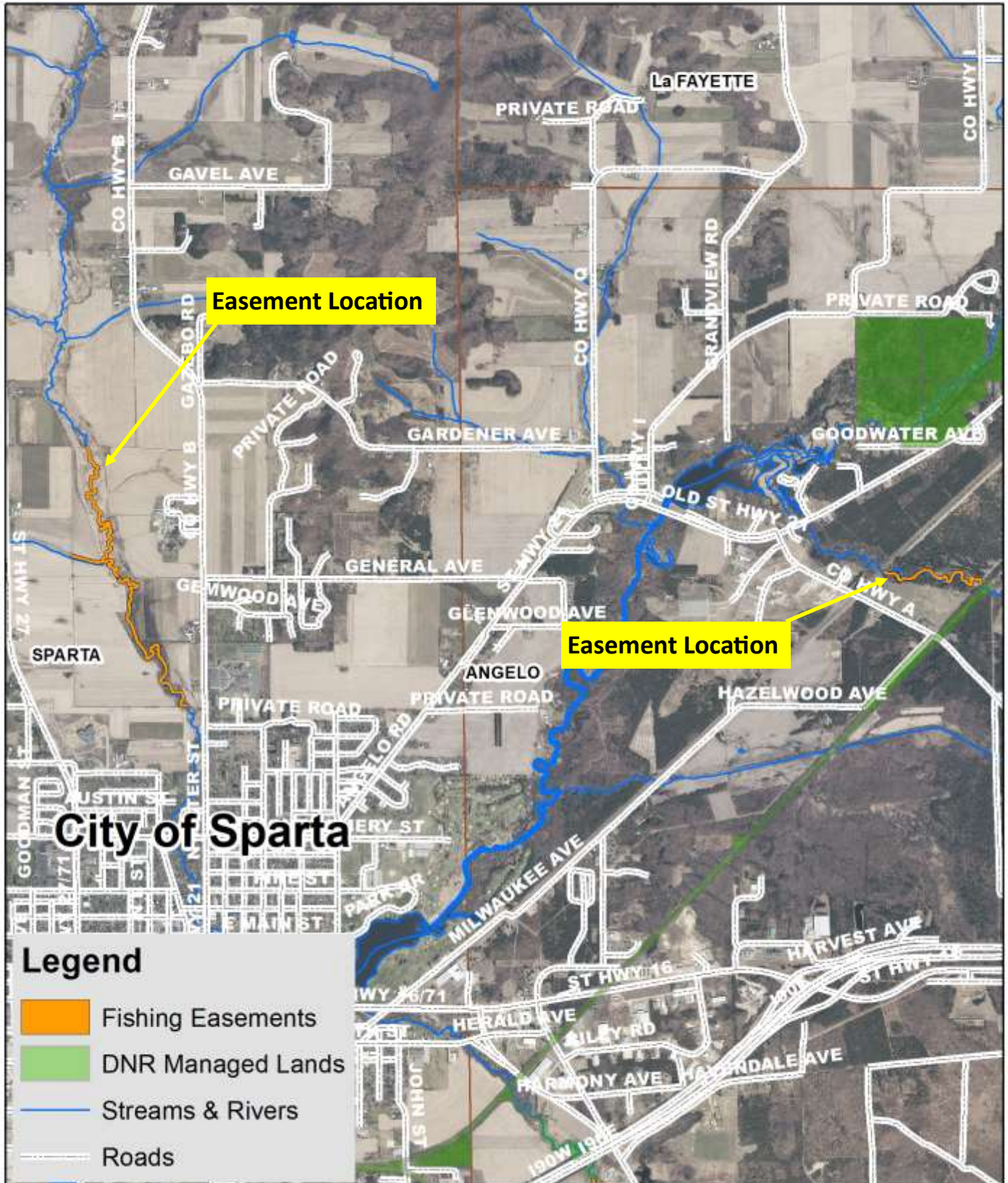


# Bailey Creek Easement Locations





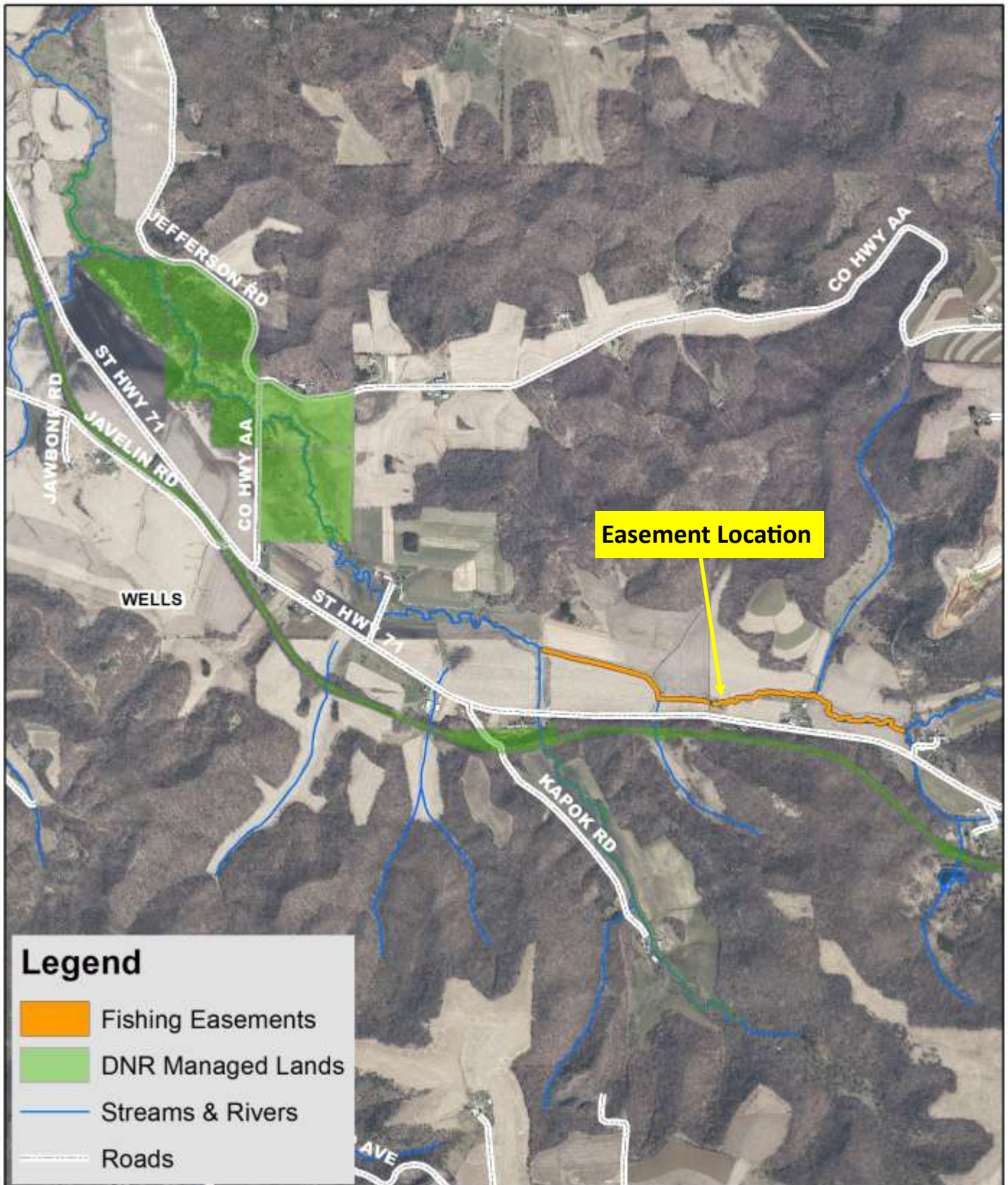
# Beaver Creek & Silver Creek Easement Locations



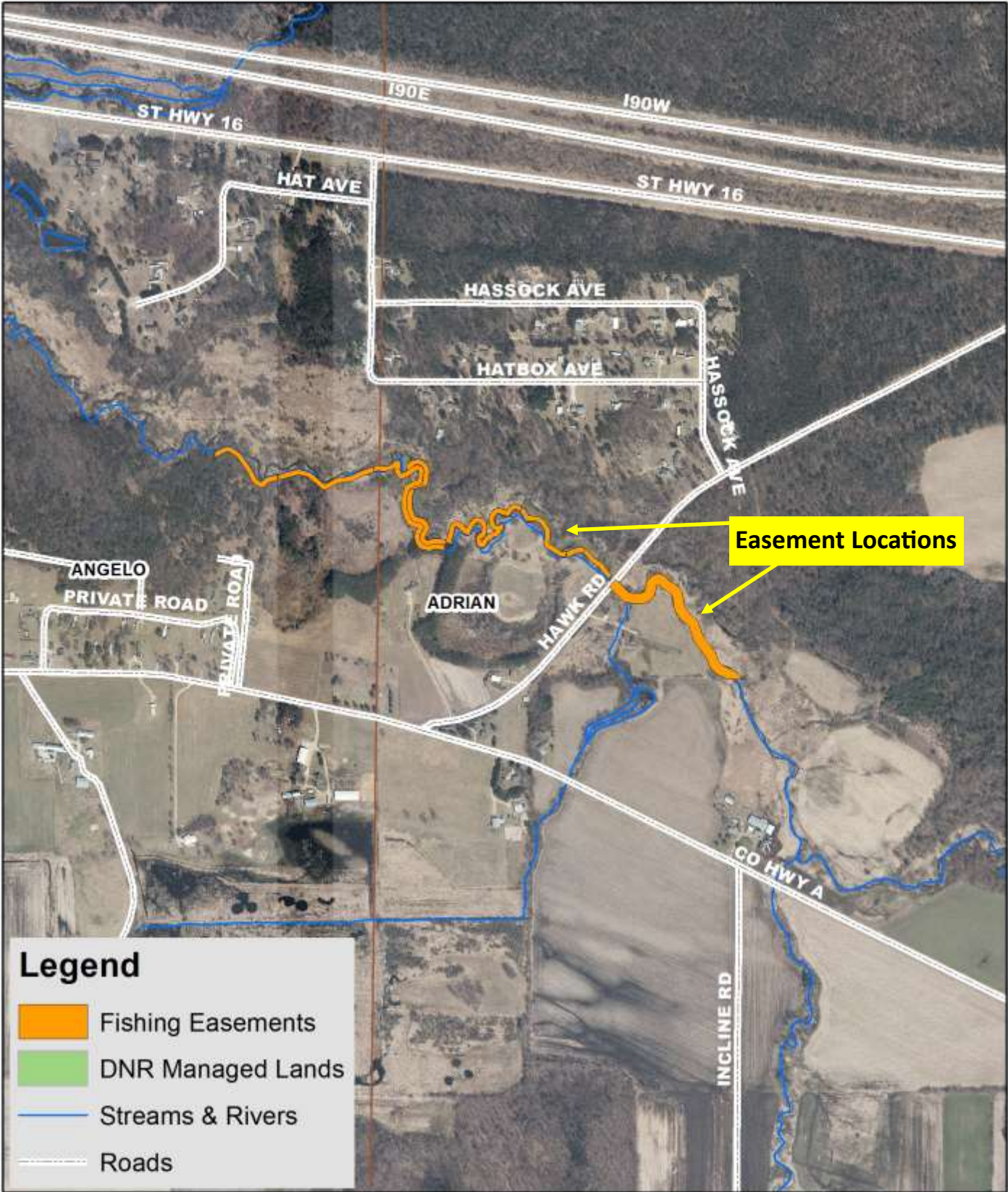
# Downstream Farmers Valley Creek Easement Locations



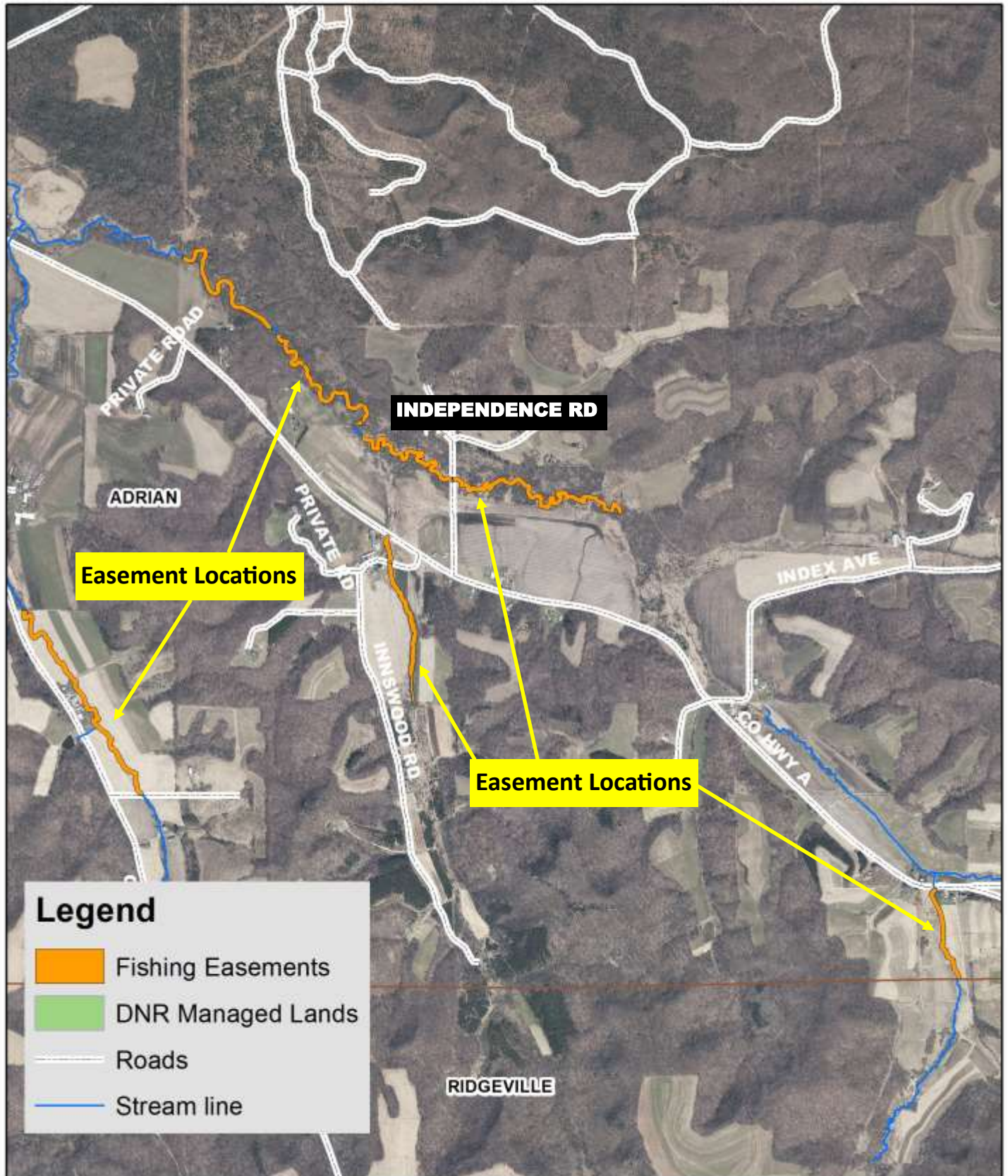
# Upstream Farmers Valley Creek Easement Locations



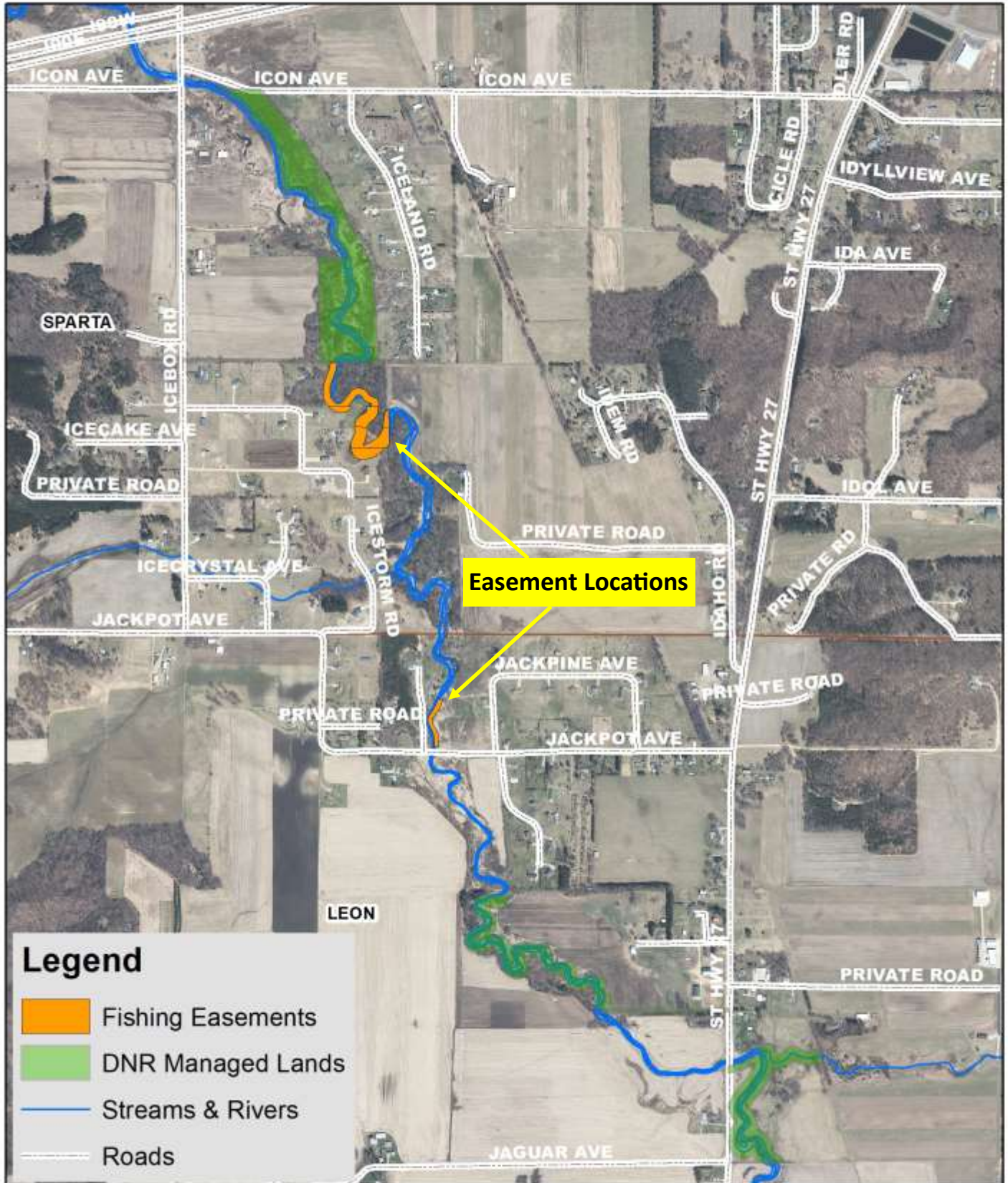
# Downstream Coles Valley Creek Easement Locations



# Coles Valley Upstream Easement Locations



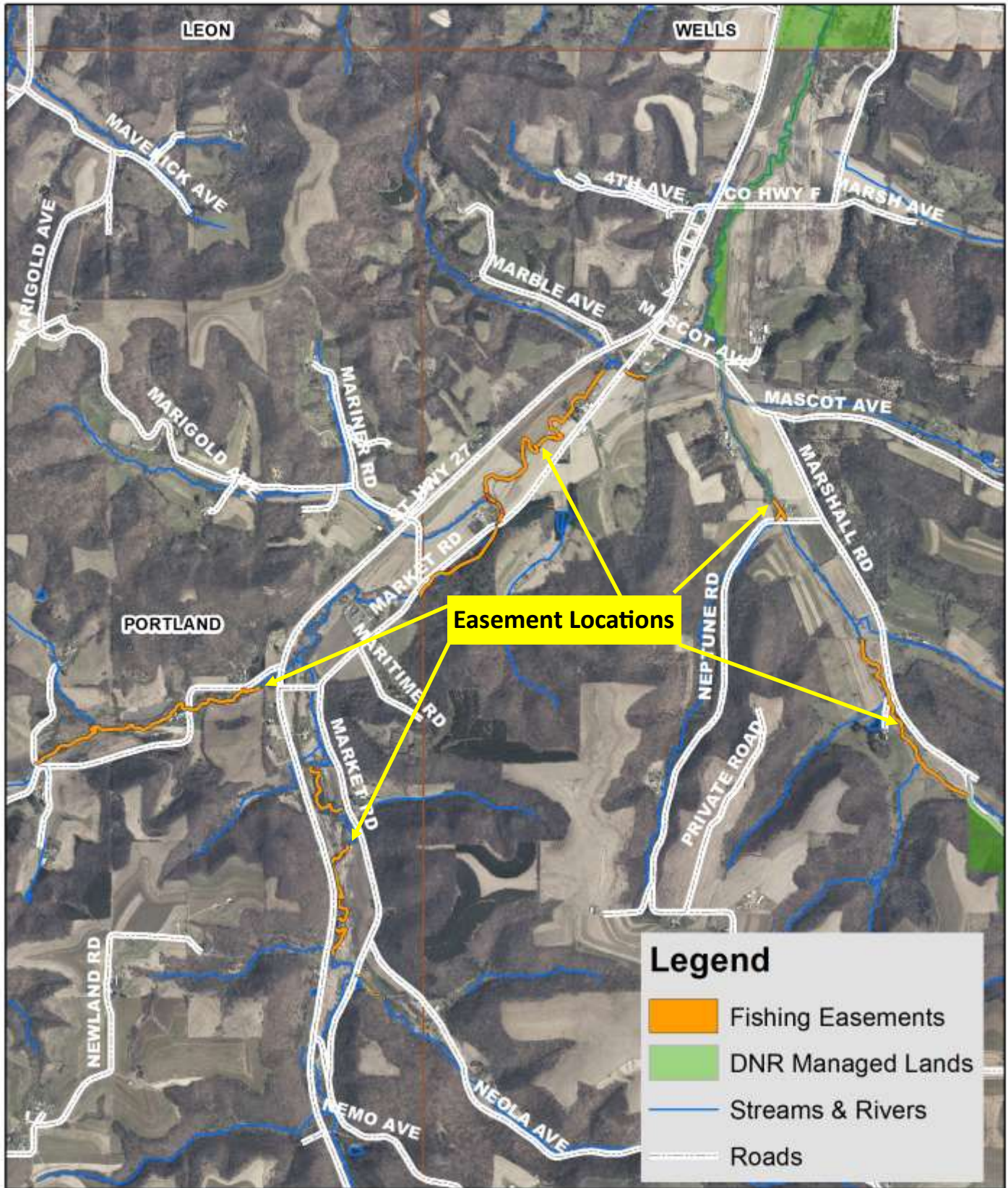
# Downstream Little La Crosse River Easement Locations



# Little La Crosse River Easement Locations

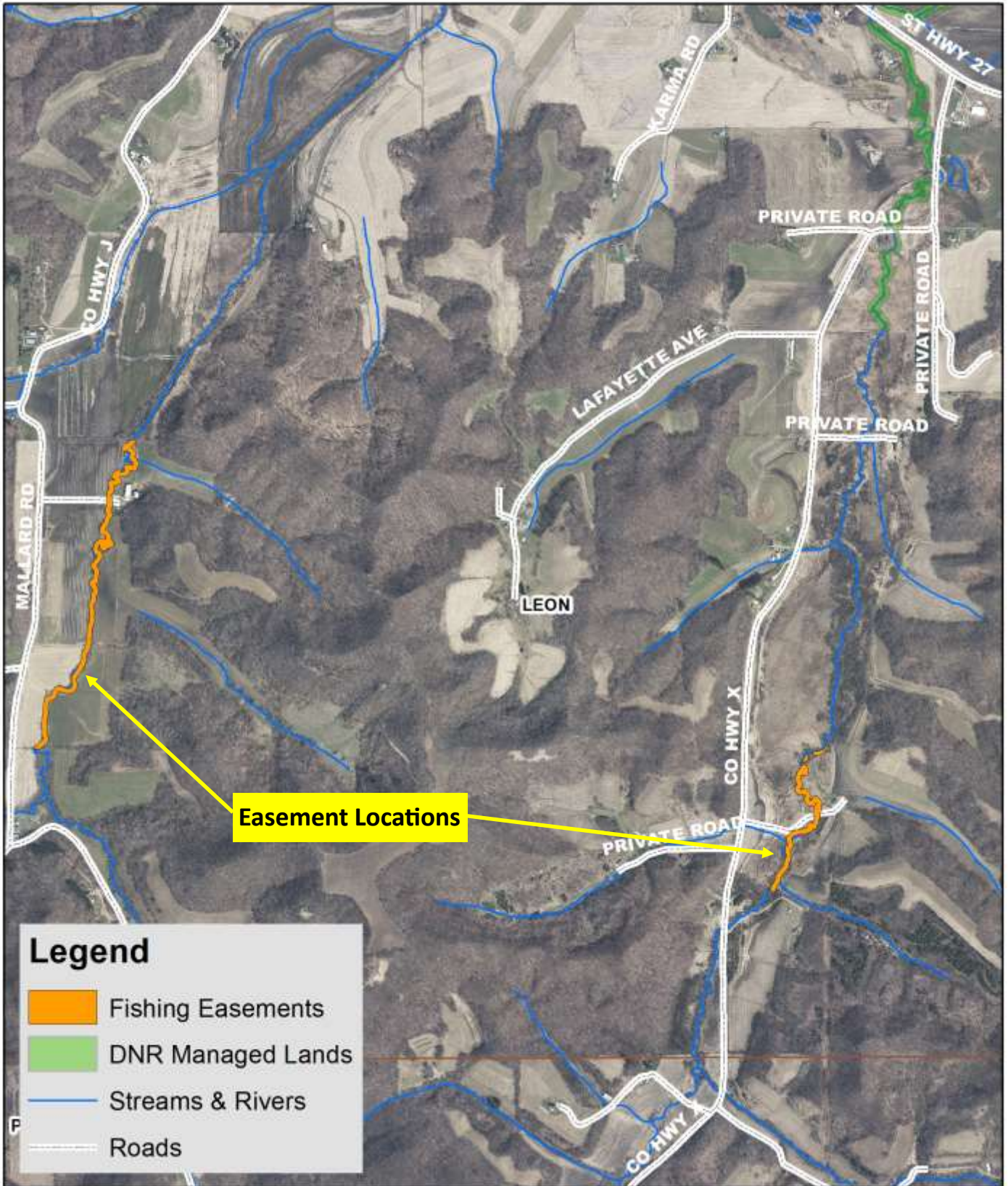


# Upstream Little La Crosse River Easement Locations

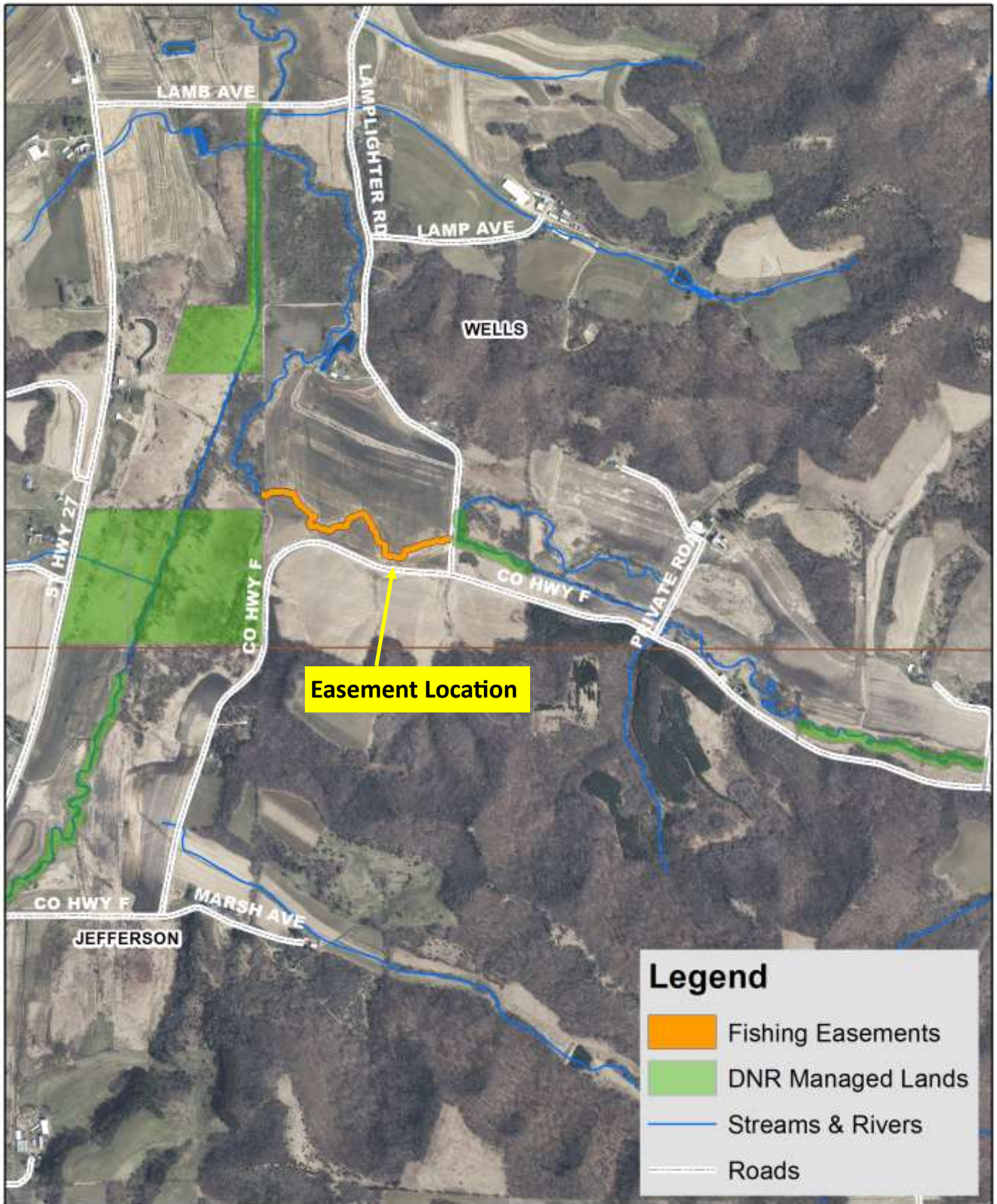




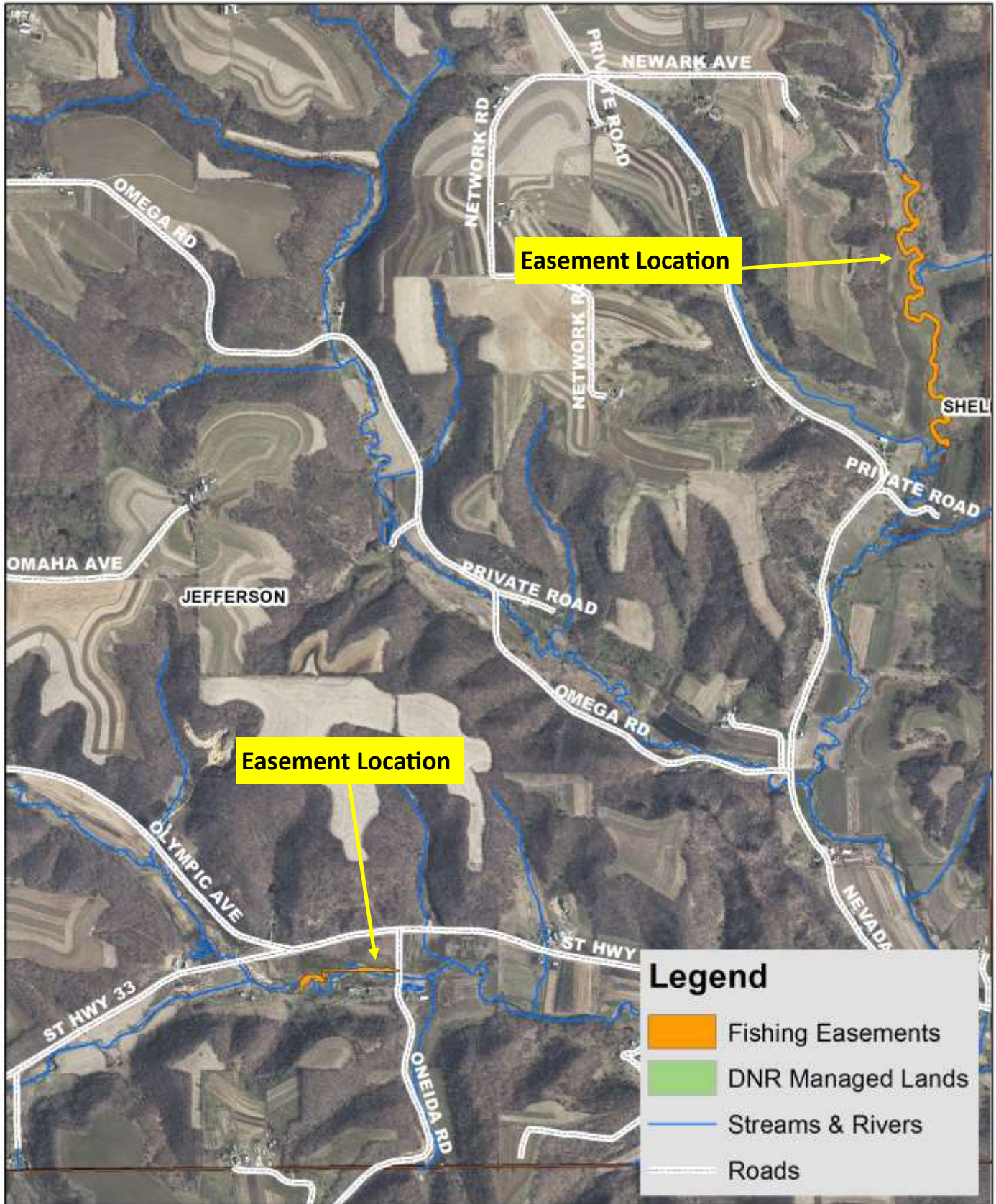
# Cannon Valley & Pleasant Creek Easement Locations



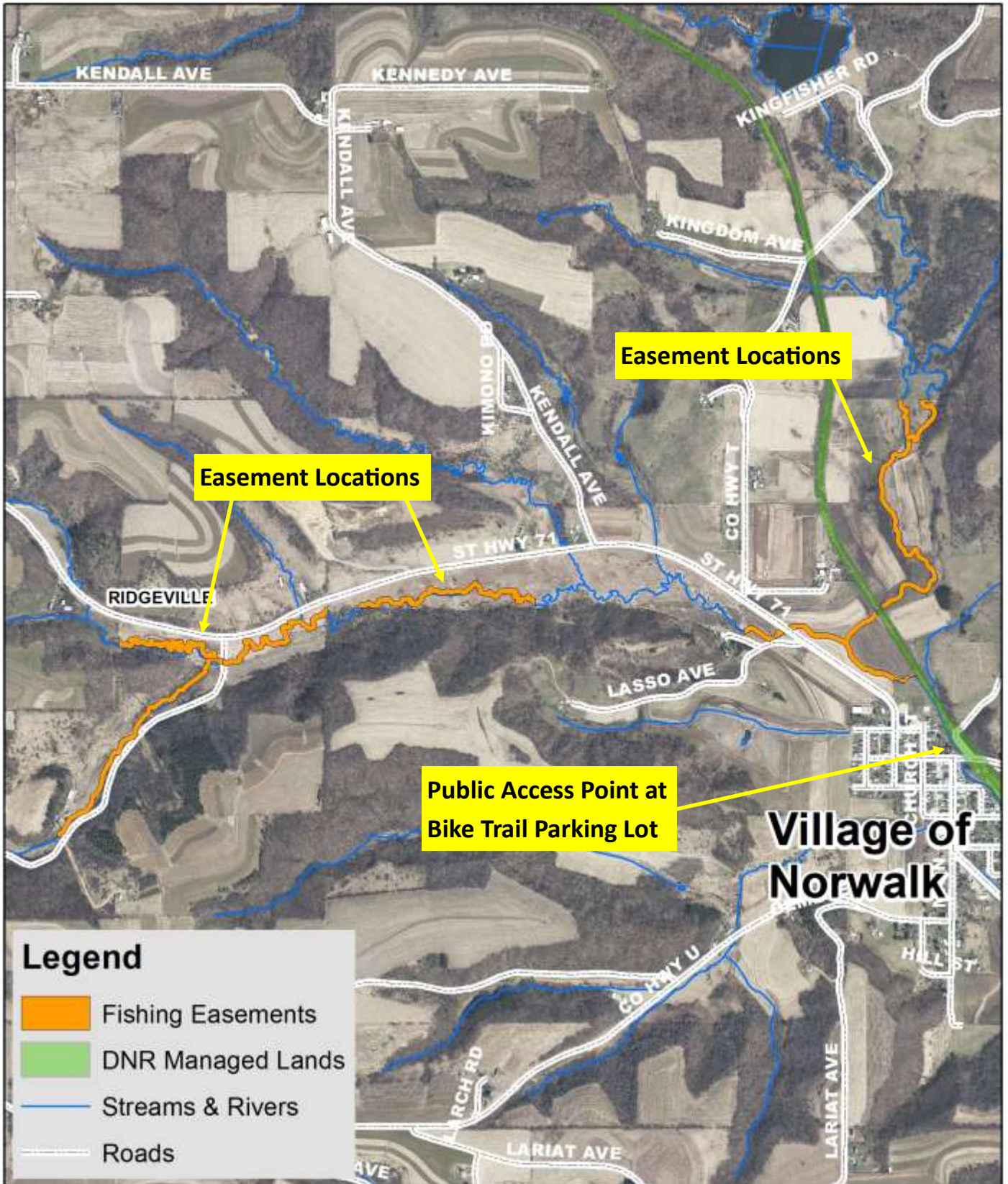
# Hall's Valley Creek Easement Locations



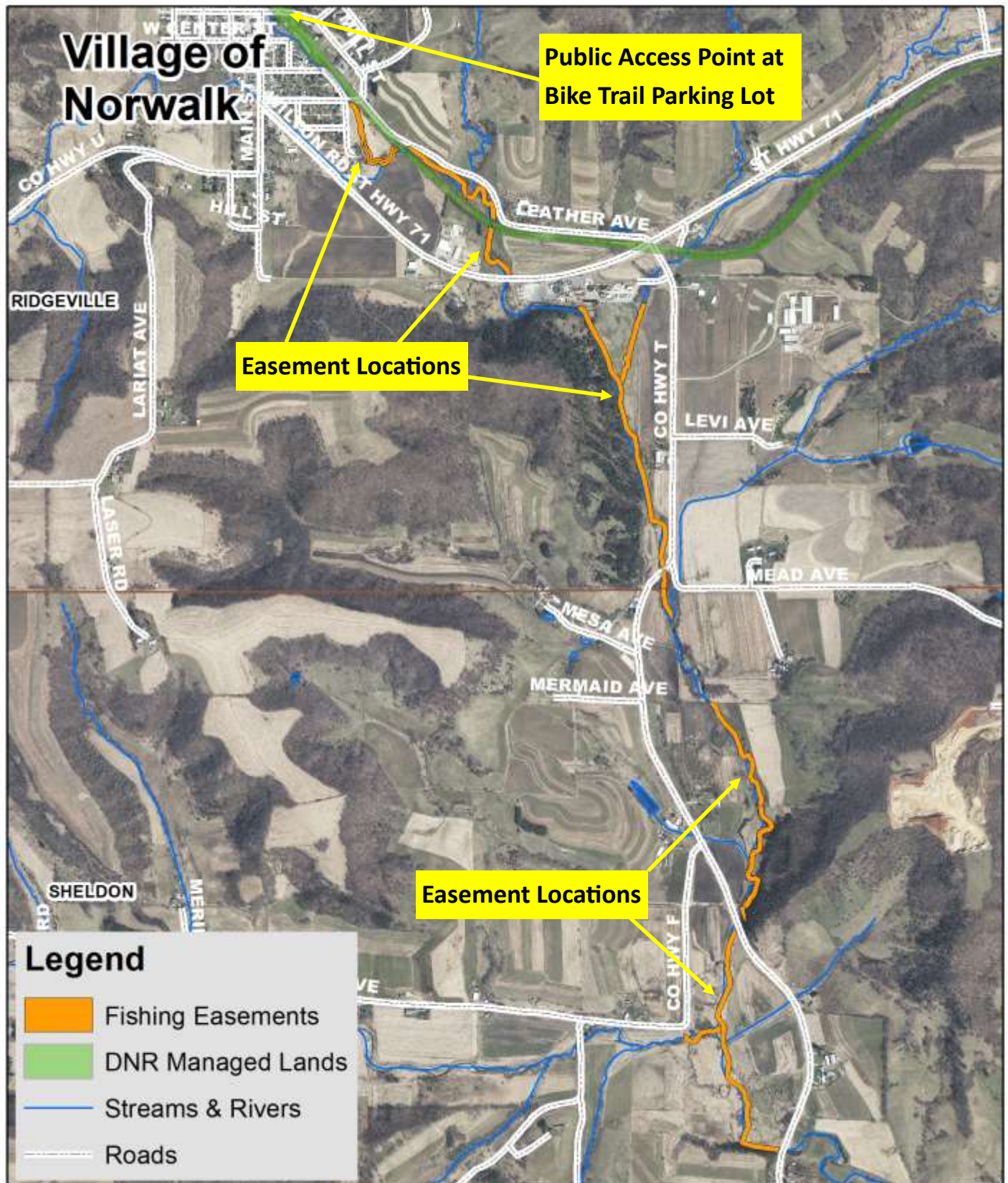
# Brush Creek Easement Locations



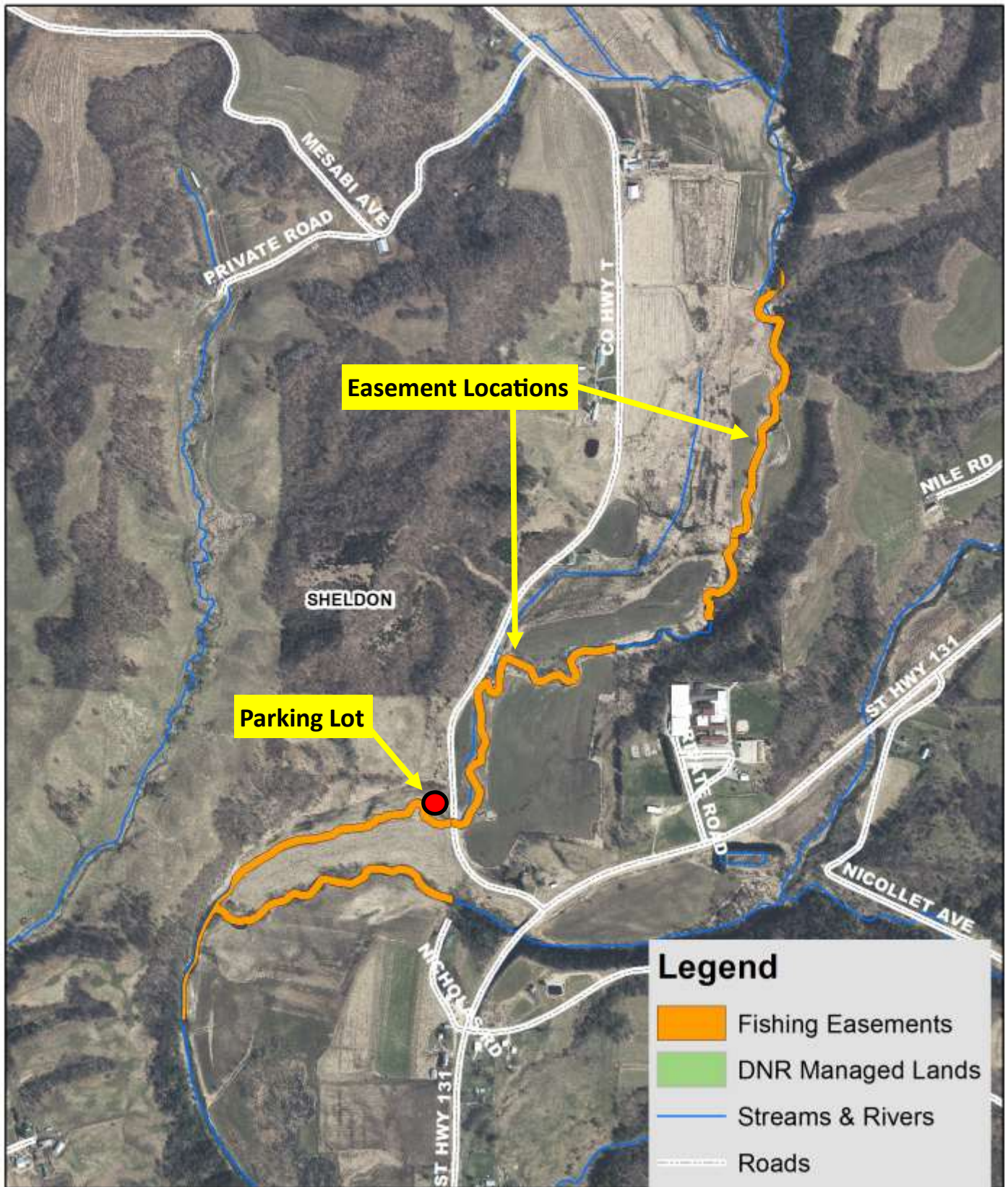
# Upstream of Norwalk Easement Locations



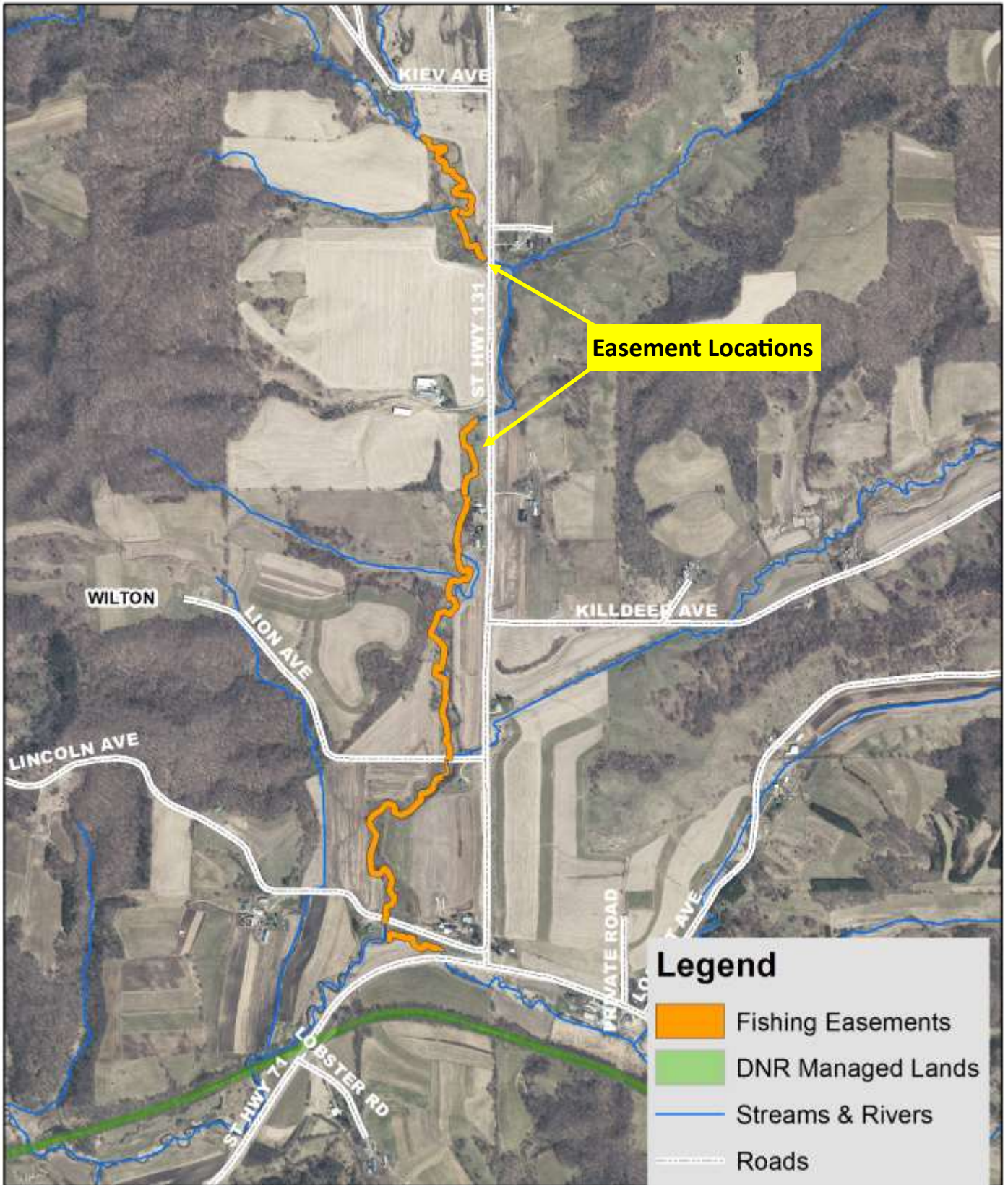
# Moore Creek Downstream of Norwalk Easement Locations



# Moore Creek/Kickapoo River Easement Locations



# Upper Kickapoo River Easement Locations

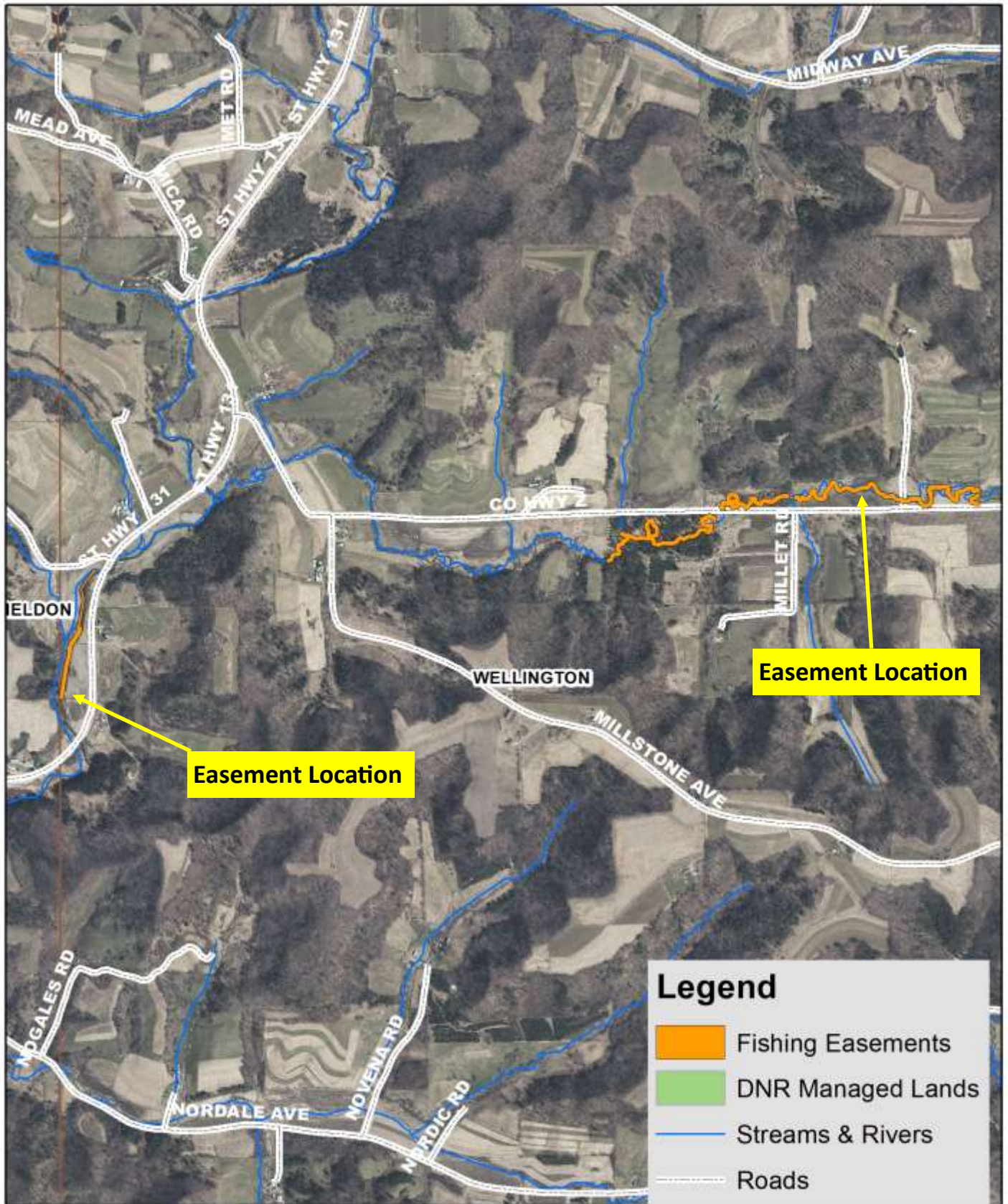


# Kickapoo River in Wilton Easement Locations

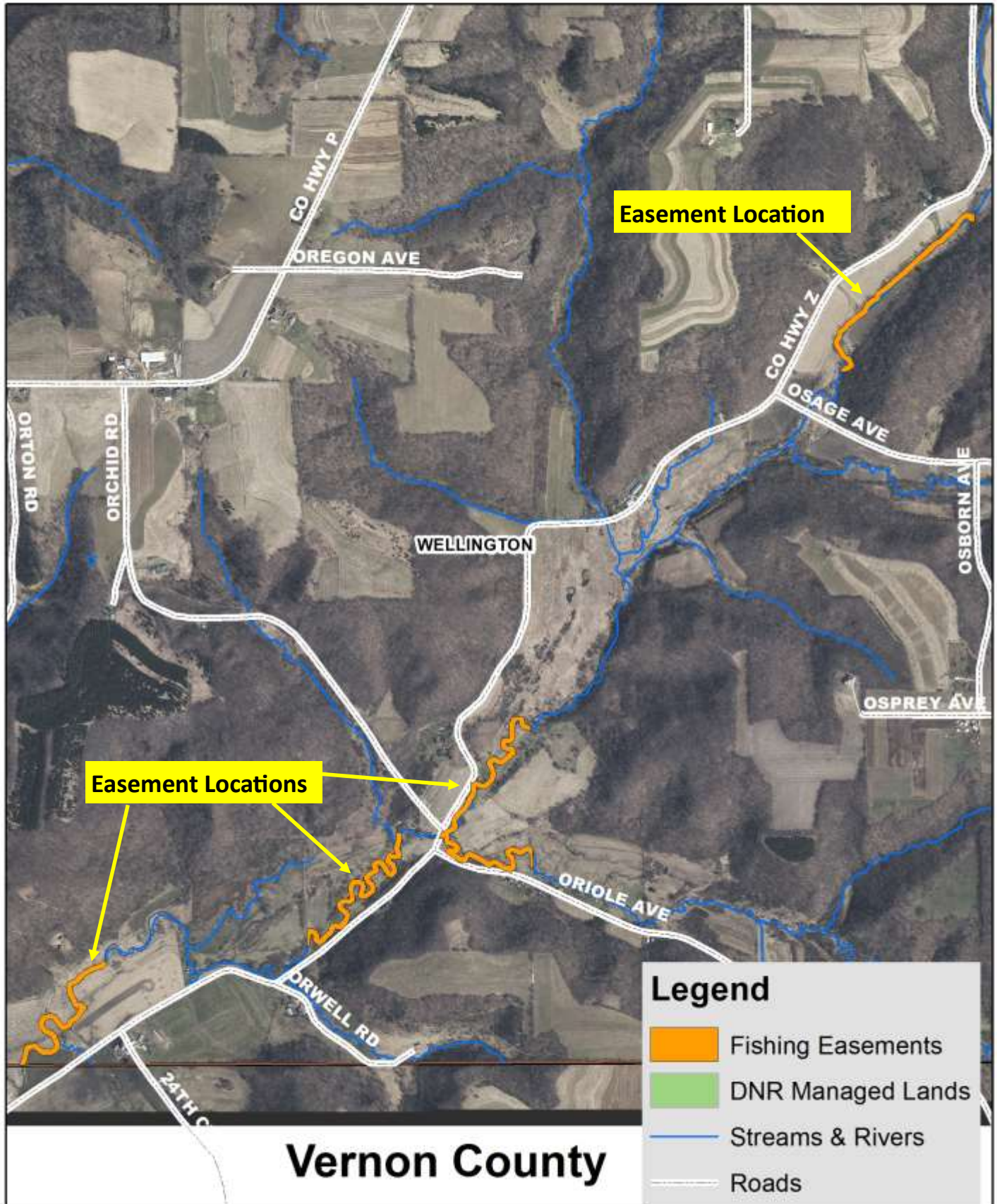




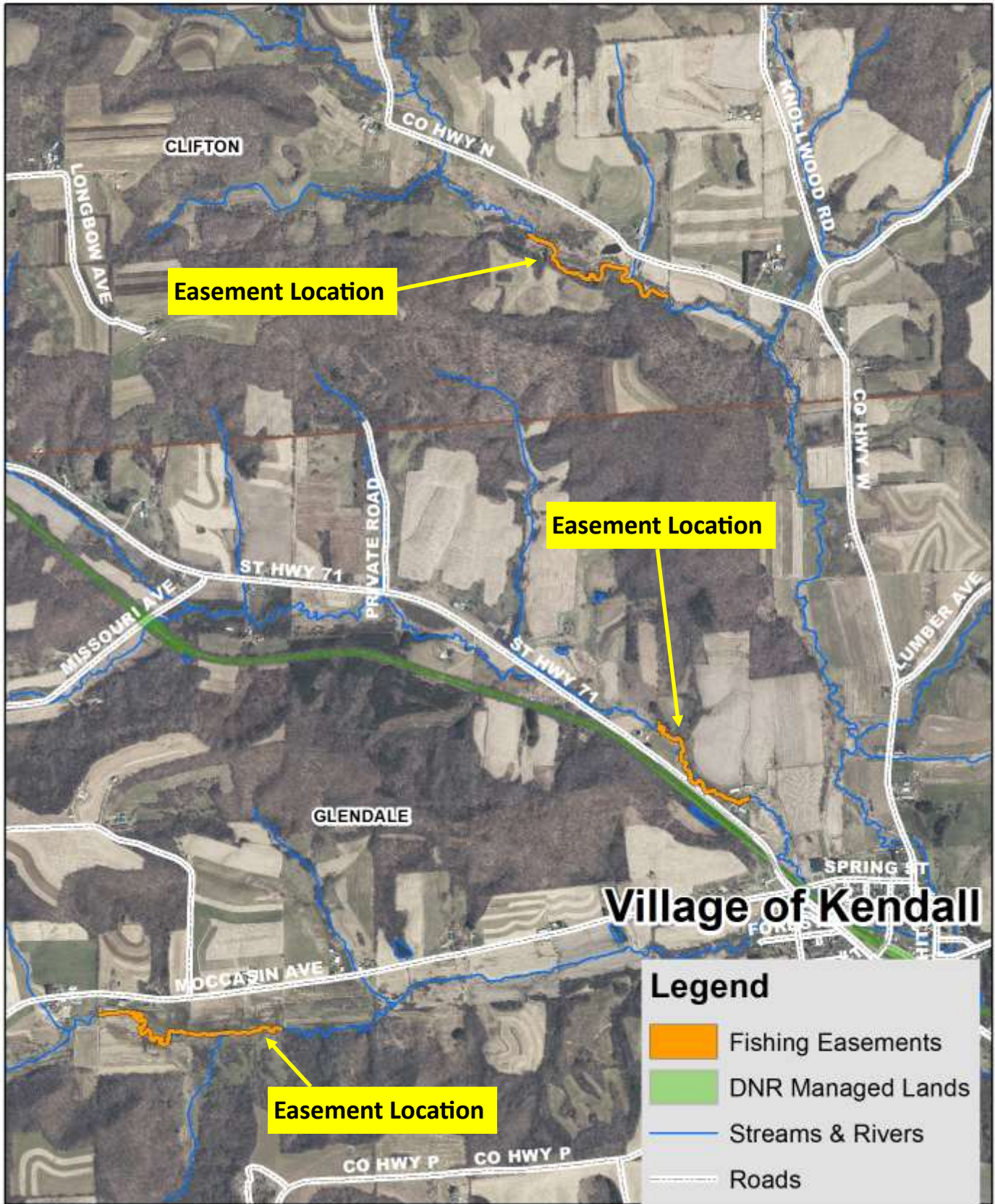
# Kickapoo River Easement Locations



# Billings Creek Easement Locations



# Upper Baraboo River Easement Locations



# Easement Rules

- ◇ The easement extends 33' on each side of the stream (or up to the participating landowners property line)
- ◇ Travel is limited to foot traffic only
- ◇ Only fishing is allowed in the easement areas, all other activities require landowner permission
- ◇ The easements are on private property, please be respectful

**Don't forget to look  
for our signs!**

