

21701113030

I, Garold A. Sime, do hereby certify that on the 16th day of November 1989, I found (evidence) ~~(no evidence)~~ of the C1/16 NW corner of Section 11, T 17 N, R 1 W Fourth Principal Meridian, and I re-established said corner according to the Wisconsin Statutes as shown and described hereon.

Dated this 12th day of Dec. 1989.

Garold A. Sime
Monroe County Surveyor
Title

History of corner establishment since Original Government Survey

Fred Zietlow found this corner in November of 1970. Duane Marten used this corner in his surveys in March of 1973 and in Nov. of 1974. Doug Malliet used this corner in February of 1977.

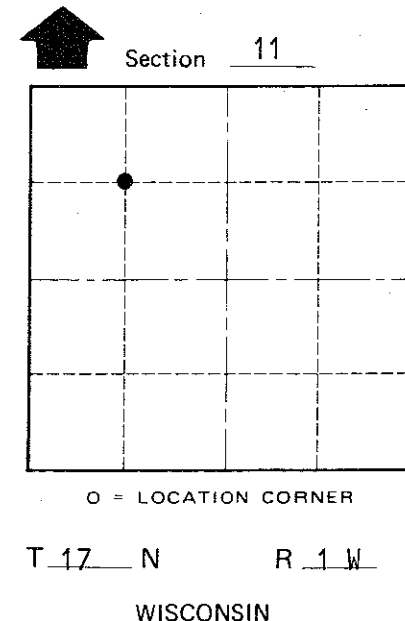
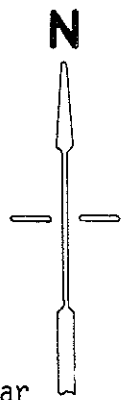
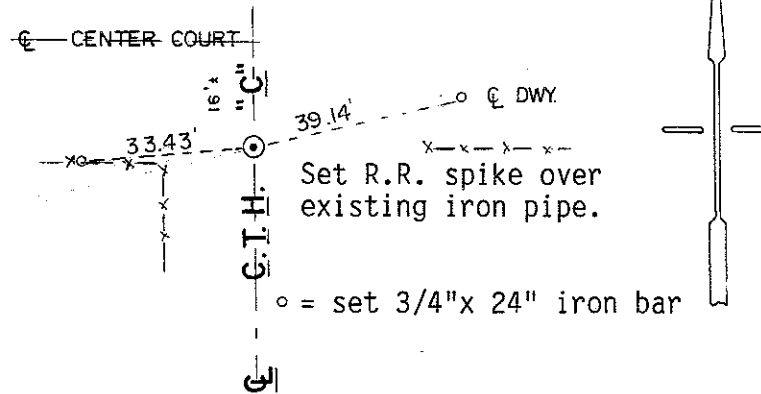
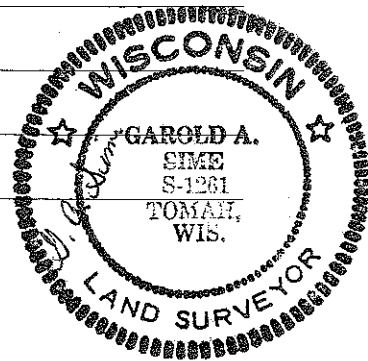
Description of corner evidence found:

Prior to highway construction I referenced the iron pipe at the corner. After the highway had been re-paved, I set a R.R. Spike over the iron pipe which is still in place.

Description of corner and witness monuments, references and accessories used to perpetuate the original or re-established location of this corner:

Witnesses to corner location:

Garold A. Sime, R.L.S.
John Kenworthy
Brian Forsythe



COUNTY SURVEYOR FORM NO. 1

SURVEY CONTROL ORDER

Horizontal _____
Vertical _____

WISCONSIN COORDINATE SYSTEM

Corner	East (X)	North (Y)	Elevation (Z)	Zone
Control Sta. Name				

City, Village or Town of Tomah
County of Monroe