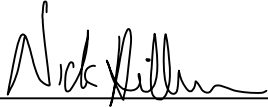


CERTIFICATE

I, Nicholas M. Hillmer, do hereby certify that this document and the data contained herein was prepared by me or under my direct supervision and that I am a duly Licensed Land Surveyor under the laws of the State of Wisconsin.

Dated this 21st day of May, 2013



Nicholas M. Hillmer, P.L.S. 2909
Anderson Engineering of Minnesota, LLC.

CERTIFIED LAND CORNER

History of corner established since Original Government Survey

The 1940's McCoy boundary notes show a corner at this location.

Description of evidence found

No evidence of the McCoy monument was found. On April 8th, 2013, Anderson Engineering of Minnesota located a 1 1/4 inch round bar 0.2 feet above grade near the corners location. No recorded history of this monument could be found. On April 22nd, 2013, Anderson Engineering of Minnesota set a 30 inch Berntsen aluminum dig monument with a 3 1/4 inch aluminum cap, stamped "FORT MCCOY BOUNDARY" "2013" "ANDERSON ENG. OF MN." The monument is set at the legal position per the section breakdown.

No. 21702153030

Description of corner and witness monuments, references and accessories used to perpetuate the original or re-established location of this corner:

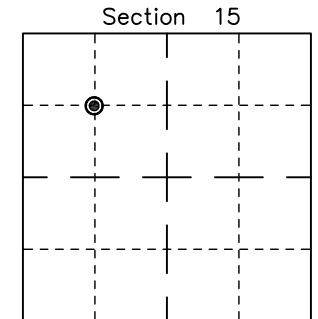
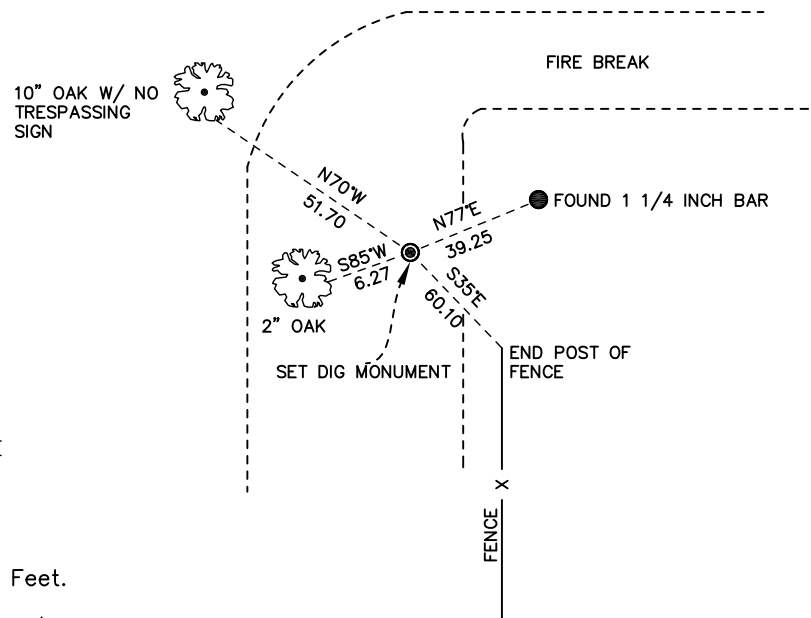
Witnesses to corner location:

Nick Hillmer
Josh Oslund
Dan Greenwald

MONROE COUNTY
COORDINATE SYSTEM
NAD 1983 (2007)

MCCOY DIG MONUMENT
Northing (Y) 382869.48
Easting (X) 680129.72

Base Station - 22 182W
Northing (Y) 408053.25
Easting (X) 679287.00



⊙ = LOCATION CORNER

Corner I.D. NW 1/16 15
T 17 N R 2 W
Town of Adrian
Monroe County, WI.

All distances are shown in U.S. Survey Feet.
Ties are to 60D nails set in trees.
Bearings are for tie reference purposes only.
Coordinates were derived from RTK GNSS procedures.