

# CERTIFICATE

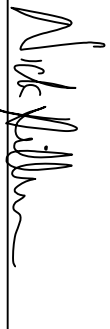
# CERTIFIED LAND CORNER

History of corner established since Original Government Survey

The 1940's McCoy boundary notes show a corner at this location.

I, Nicholas M. Hillmer, do hereby certify that this document and the data contained herein was prepared by me or under my direct supervision and that I am a duly Licensed Land Surveyor under the laws of the State of Wisconsin.

Dated this 21st day of May, 2013



Nicholas M. Hillmer, P.L.S. 2909  
Anderson Engineering of Minnesota, LLC.

## Description of evidence found

On October 30, 2012, Anderson Engineering of Minnesota located the McCoy monument, a 4 inch U.S. Army Corps of Engineers survey control mark disk set in concrete 0.2 feet below grade and 1.75 feet southeast of a wood fence corner post. The monument is believed to be set based on fence line occupation and is accepted as the best available evidence.

Description of corner and witness monuments, references and accessories used to perpetuate the original or re-established location of this corner:

Witnesses to corner location:

Nick Hillmer  
Josh Oslund  
Dan Greenwald

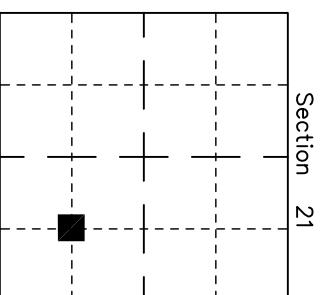
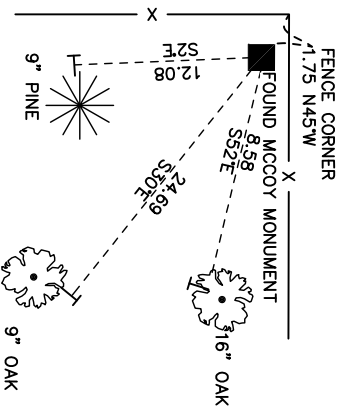
MONROE COUNTY  
COORDINATE SYSTEM  
NAD 1983 (2007)

MCCOY MONUMENT  
Northing (Y) 374994.31  
Easting (X) 677576.15

Base Station - 22 182W  
Northing (Y) 408053.25  
Easting (X) 679287.00



All distances shown in U.S. Survey Feet.  
Ties are made to 60 D Nails set in trees.  
Bearings are for the reference purposes only.  
Coordinates derived from RTK GNSS procedures.



■ = LOCATION CORNER  
Corner I.D. SE 1/16 21

T 17 N R 2 W  
Town of Adrian

Monroe County, WI.

No. 21702211010