

CERTIFICATE

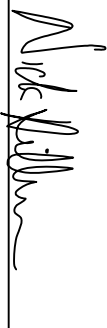
CERTIFIED LAND CORNER

History of corner established since Original Government Survey

The 1940's McCoy boundary notes show a corner at this location.

I, Nicholas M. Hillmer, do hereby certify that this document and the data contained herein was prepared by me or under my direct supervision and that I am a duly Licensed Land Surveyor under the laws of the State of Wisconsin.

Dated this 21st day of May, 2013


 Nicholas M. Hillmer, P.L.S. 2909
 Anderson Engineering of Minnesota, LLC.

Description of evidence found

No evidence of the McCoy monument was found. On April 22nd, 2013, Anderson Engineering of Minnesota set a 30 inch Berttsen aluminum dig monument with a 3 1/4 inch aluminum cap, stamped "FORT MCCOY BOUNDARY" "2013" "ANDERSON ENG. OF MN." The monument is set midway online between the south quarter corner and the southwest corner of Section 21.

Description of corner and witness monuments, references and accessories used to perpetuate the original or re-established location of this corner:

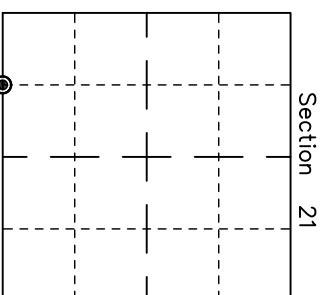
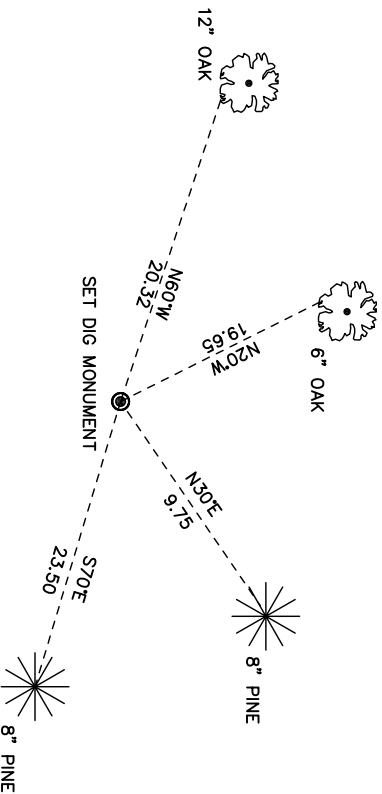
Witnesses to corner location:

Nick Hillmer
Josh Oslund
Dan Greenwald

MONROE COUNTY
 COORDINATE SYSTEM
 NAD 1983 (2007)

MCCOY DIG MONUMENT
 Northing (Y) 373720.98
 Easting (X) 674974.31

Base Station - 22 182W
 Northing (Y) 408053.25
 Easting (X) 679287.00



● = LOCATION CORNER
 Corner I.D. W 1/16 21

All distances are shown in U.S. Survey Feet.
 Ties are to 60D nails set in trees.
 Bearings are for the reference purposes only.
 Coordinates were derived from RTK GNSS procedures.

T 17 N R 2 W
 Town of Adrian
 Monroe County, WI.

No. 21702210030