

CERTIFICATE

CERTIFIED LAND CORNER

History of corner established since Original Government Survey

Fred Holden set a pipe at this location in 1907. In 1940 Ray Hurlburt found Holden's pipe. The 1940's McCoy boundary notes show a corner at this location.

I, Nicholas M. Hillmer, do hereby certify that this document and the data contained herein was prepared by me or under my direct supervision and that I am a duly Licensed Land Surveyor under the laws of the State of Wisconsin.

Dated this 21st day of May, 2013



Nicholas M. Hillmer, P.L.S. 2909
Anderson Engineering of Minnesota, LLC.

Description of evidence found

On October 30th 2012, Anderson Engineering of Minnesota located the 1 1/4 inch solid iron rod set by Fred Holden in 1907 1.0 foot southwest of a fence corner post of a fence running north, east and south. On April 22, 2013, Anderson Engineering of Minnesota replaced Holden's iron with a 30 inch Berntsen aluminum dig monument with a 3 1/4 inch aluminum cap, stamped "FORT MCCOY BOUNDARY" "2013" "ANDERSON ENG. OF MN."

Description of corner and witness monuments, references and accessories used to perpetuate the original or re-established location of this corner:

Witnesses to corner location:

Nick Hillmer
Josh Oslund
Dan Greenwald

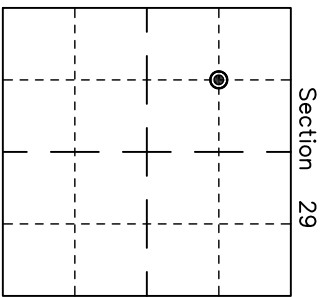
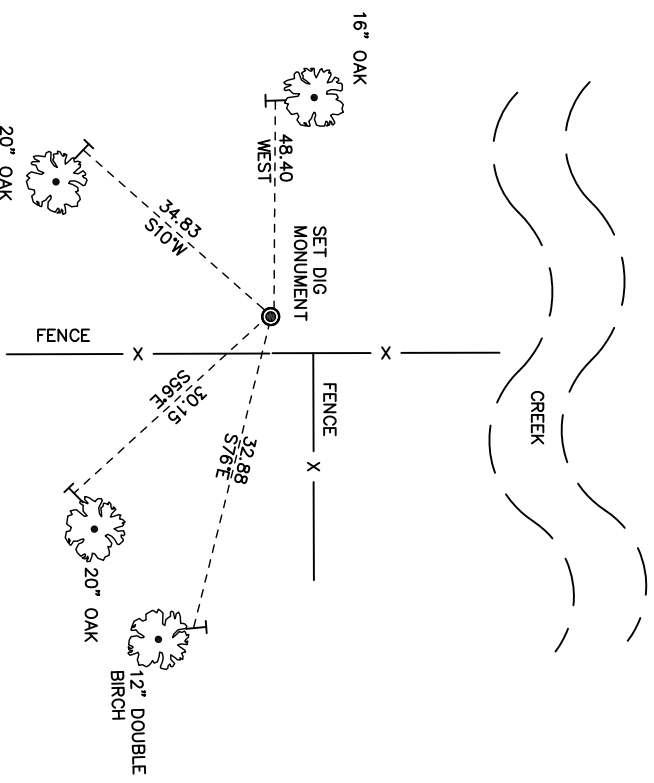
MONROE COUNTY
COORDINATE SYSTEM
NAD 1983 (2007)

MCCOY DIG MONUMENT
Northing (Y) 372,356.22
Easting (X) 669,783.32

Base Station - 22 182W
Northing (Y) 408053.25
Easting (X) 679287.00



All distances shown in U.S. Survey Feet.
Ties are made to 60 D Nails set in trees.
Bearings are for the reference purposes only.
Coordinates derived from RTK GNSS procedures.



Section 29
● = LOCATION CORNER
Corner I.D. NW 1/16 29
T 17 N R 2 W
Town of Adrian
Monroe County, WI.

No. 21702293030