

**CERTIFICATE**

**CERTIFIED LAND CORNER**

**History of corner established since Original Government Survey**


I, Nicholas M. Hillmer, do hereby certify that this document and the data contained herein was prepared by me or under my direct supervision and that I am a duly Licensed Land Surveyor under the laws of the State of Wisconsin.

No known recorded history. The 1940's McCoy boundary surveyed in a straight line from the NW 1/16 of Section 28 to the NW 1/16 of Section 29. McCoy boundary notes dated October 24, 1962, show encroaching fences in multiple locations along the boundary line.

No. 21702293020

Dated this 21st day of May, 2013

**Description of evidence found**

  
 Nicholas M. Hillmer, P.L.S. 2909  
 Anderson Engineering of Minnesota, LLC.

On April 22nd, 2013, Anderson Engineering of Minnesota set a 30 inch Bertsen aluminum dig monument with a 3 1/4 inch aluminum cap, stamped "FORT MCCOY BOUNDARY" "2013" "ANDERSON ENG. OF MN." The monument is set midway online between the north quarter corner and the center of Section 29.

Description of corner and witness monuments, references and accessories used to perpetuate the original or re-established location of this corner:

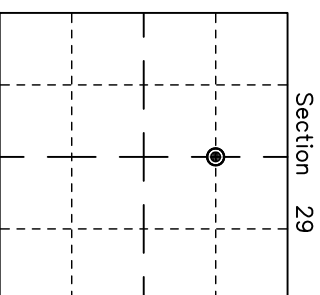
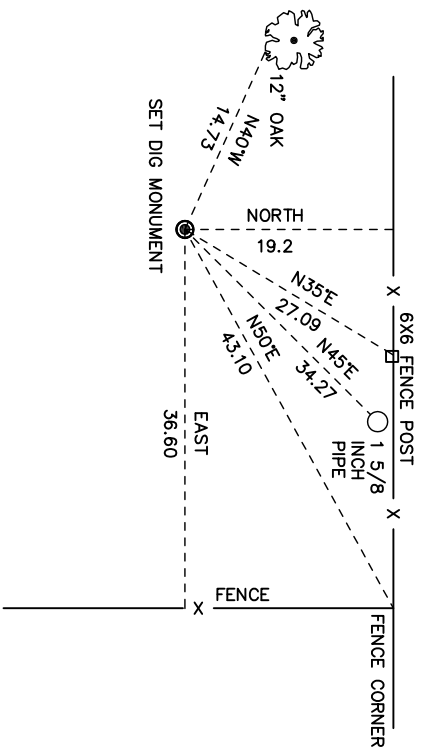
Witnesses to corner location:

Nick Hillmer  
Josh Oslund  
Dan Greenwald

MONROE COUNTY  
 COORDINATE SYSTEM  
 NAD 1983 (2007)

MCCOY DIG MONUMENT  
 Northing (Y) 372379.14  
 Easting (X) 671082.21

Base Station - 22 182W  
 Northing (Y) 408053.25  
 Easting (X) 679287.00



All distances are shown in U.S. Survey Feet.  
 Ties are to 60D nails.  
 Bearings are for the reference purposes only.  
 Coordinates were derived from RTK GNSS procedures.

● = LOCATION CORNER  
 Corner I.D. CN 1/16 29  
 T 17 N R 2 W  
 Town of Adrian  
 Monroe County, WI.