

CERTIFICATE

CERTIFIED LAND CORNER

History of corner established since Original Government Survey

I, Nicholas M. Hillmer, do hereby certify that this document and the data contained herein was prepared by me or under my direct supervision and that I am a duly Licensed Land Surveyor under the laws of the State of Wisconsin.

Dated this 21st day of May, 2013



Nicholas M. Hillmer, P.L.S. 2909
Anderson Engineering of Minnesota, LLC.

Description of corner and witness monuments, references and accessories used to perpetuate the original or re-established location of this corner:

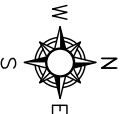
Witnesses to corner location:

Nick Hillmer
Josh Oslund
Dan Greenwald

MONROE COUNTY
COORDINATE SYSTEM
NAD 1983 (2007)

MCCOY DIG MONUMENT
Northing (Y) 372,392.94
Easting (X) 673,685.74

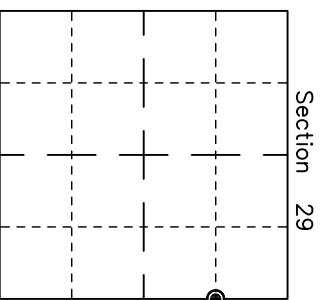
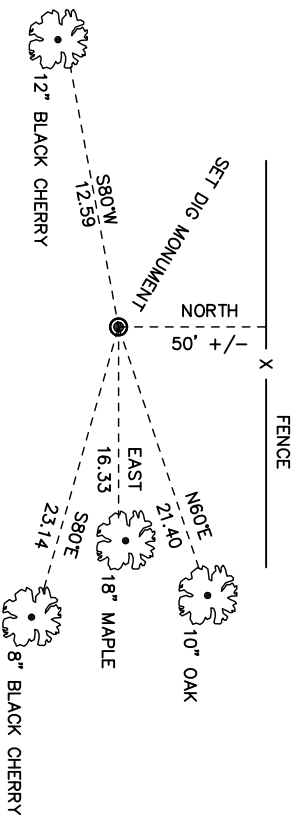
Base Station - 22 182W
Northing (Y) 408,053.25
Easting (X) 679,287.00



All distances are shown in U.S. Survey Feet.
Ties are to 60D nails set in trees.
Bearings are for the reference purposes only.
Coordinates were derived from RTK GNSS procedures.

Description of evidence found

On April 22nd 2013, Anderson Engineering of Minnesota set a 30 inch Berrtsen aluminum dig monument with a 3 1/4 inch aluminum cap, stamped "FORT MCCOY BOUNDARY" "2013" "ANDERSON ENG. OF MN." The monument is set midway online between the east quarter corner and the northeast corner of Section 29.



● = LOCATION CORNER
Corner I.D. N 1/16 29
T 17 N R 2 W
Town of Adrian
Monroe County, WI.