


CERTIFICATE

CERTIFIED LAND CORNER

No. 21702200030

I, Nicholas M. Hillmer, do hereby certify that this document and the data contained herein was prepared by me or under my direct supervision and that I am a duly Licensed Land Surveyor under the laws of the State of Wisconsin.

Dated this 21st day of May, 2013


 Nicholas M. Hillmer, P.L.S. 2909
 Anderson Engineering of Minnesota, LLC.

Description of corner and witness monuments, references and accessories used to perpetuate the original or re-established location of this corner:

Witnesses to corner location:

Nick Hillmer
 Josh Oslund
 Dan Greenwald

MONROE COUNTY
 COORDINATE SYSTEM
 NAD 1983 (2007)

MCCOY DIG MONUMENT
 Northing (Y) 373681.71
 Easting (X) 669801.38

Base Station - 22 182W
 Northing (Y) 408053.25
 Easting (X) 679287.00



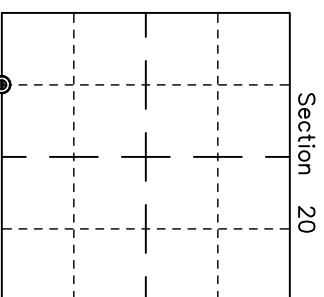
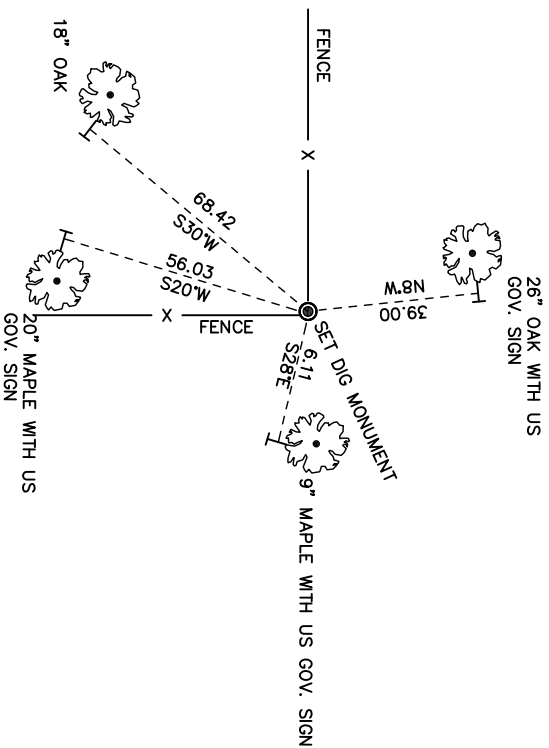
All distances shown in U.S. Survey Feet.
 Ties are made to 60 D Nails set in trees.
 Bearings are for the reference purposes only.
 Coordinates derived from RTK GNSS procedures.

Description of evidence found

History of corner established since Original Government Survey

Fred Holden set a 1 1/2 inch pipe here in 1907. The 1940's McCoy boundary notes show a corner at this location.

On October 31, 2012, Anderson Engineering of Minnesota located the 1 1/2 inch iron pipe set by Fred Holden in 1911 near a fence corner with fence running to the west and south. On April 22, 2013, Anderson Engineering of Minnesota replaced Holden's iron with a 30 inch Berntsen aluminum dig monument with a 3 1/4 inch aluminum cap, stamped "FORT MCCOY BOUNDARY" "2013" "ANDERSON ENG. OF MN."



Section 20
 ● = LOCATION CORNER
 Corner I.D. W 1/16 20
T 17 N R 2 W
 Town of Adrian
 Monroe County, WI.