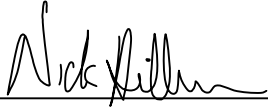


CERTIFICATE

I, Nicholas M. Hillmer, do hereby certify that this document and the data contained herein was prepared by me or under my direct supervision and that I am a duly Licensed Land Surveyor under the laws of the State of Wisconsin.

Dated this 21st day of May, 2013



Nicholas M. Hillmer, P.L.S. 2909
Anderson Engineering of Minnesota, LLC.

CERTIFIED LAND CORNER

No. 21902330015

History of corner established since Original Government Survey

In 1976 James Denzine set a 1 1/8 inch rebar for this corner while completing a boundary survey for the Wisconsin Department of Natural Resources, per CSR 1889.

Description of evidence found

On December 5th, 2012, Anderson Engineering of Minnesota located the 1 1/8 inch rebar 0.2 feet below grade. On April 18th, 2013, Anderson Engineering of Minnesota replaced the rebar with a 30 inch Berntsen aluminum dig monument with a 3 1/4 inch aluminum cap, stamped "FORT MCCOY BOUNDARY" "2013" "ANDERSON ENG. OF MN."

Description of corner and witness monuments, references and accessories used to perpetuate the original or re-established location of this corner:

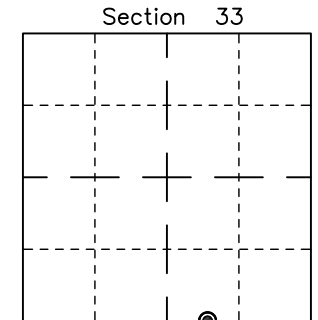
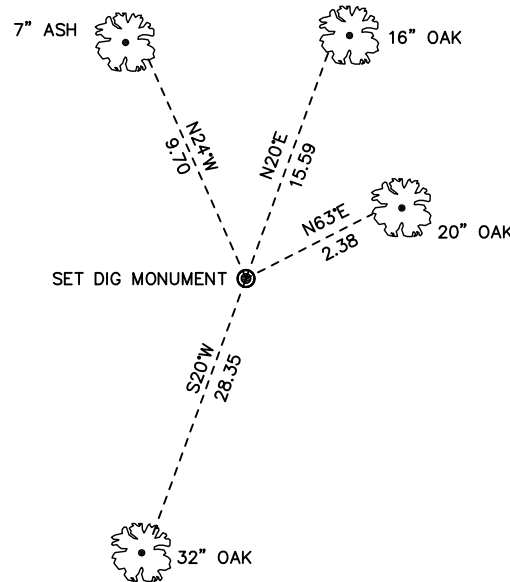
Witnesses to corner location:

Nick Hillmer
Josh Oslund
Dan Greenwald

MONROE COUNTY
COORDINATE SYSTEM
NAD 1983 (2007)

MCCOY DIG MONUMENT
Northing (Y) 426303.96
Easting (X) 676545.91

Base Station - 22 182W
Northing (Y) 408053.25
Easting (X) 679287.00



⊙ = LOCATION CORNER

Corner I.D. WE 1/64 33

T 19 N R 2 W

Town of Grant

Monroe County, WI.

All distances are shown in U.S. Survey Feet.
Ties are to 60D nails set in trees.
Bearings are for tie reference purposes only.
Coordinates were derived from RTK GNSS procedures.