

21604060020

I, William C. Jung, do hereby certify that on the 8th day of August 1980, I found (evidence) ~~(no evidence)~~ of the North 1/4 corner of section 7, T. 16 N, R. 4 W Fourth Principal Meridian, and I re-established said corner according to the Wisconsin Statutes as shown and described hereon.

Dated this 11th day of Aug. 1980.

William C. Jung
William C. Jung, R.L.S. 1323
Title

History of corner establishment since Original Government Survey

Harley Sime found an iron pipe at the old occupied corner in his survey of November, 1971. Fred Zietlow used this pipe in his survey of November, 1971.

Description of corner evidence found:

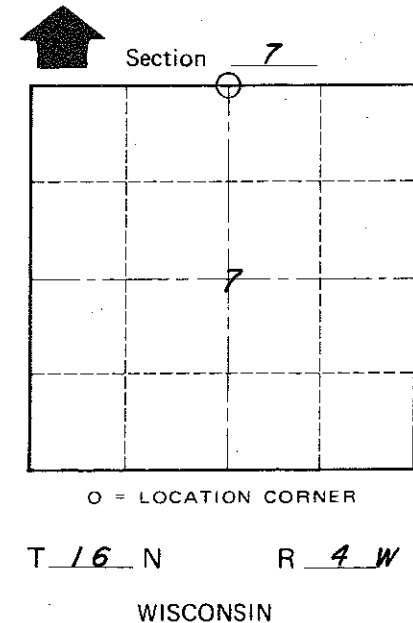
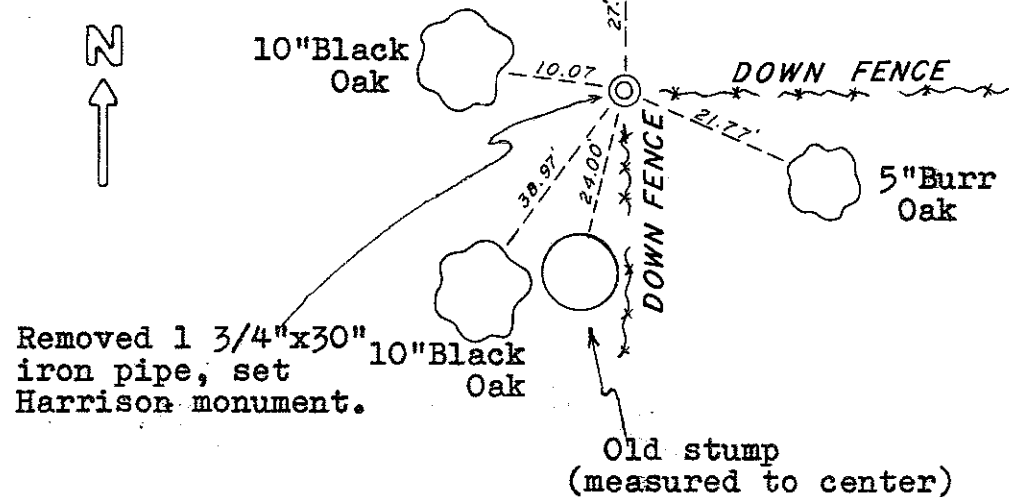
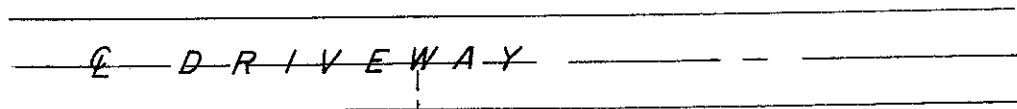
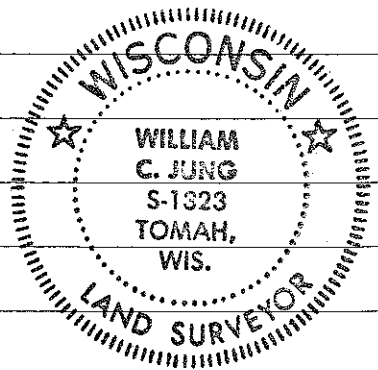
Found the monument of record, removed the iron pipe and replaced it with a Harrison marker.

Approved: **HARLEY A. SIME**
MONROE CO. SURVEYOR

Description of corner and witness monuments, references and accessories used to perpetuate the original or re-established location of this corner:

Witnesses to corner location:

W. Jung
B. Meyer
C. Dade



Note: All trees double blazed with a N&C set in each.

WISCONSIN COORDINATE SYSTEM

SURVEY CONTROL ORDER

Horizontal	_____
Vertical	_____

Corner	East (X)	North (Y)	Elevation (Z)	Zone
Control Sta. Name				

City, Village or Town Leon
County of Monroe
Wisconsin

COUNTY SURVEYOR FORM NO. 1