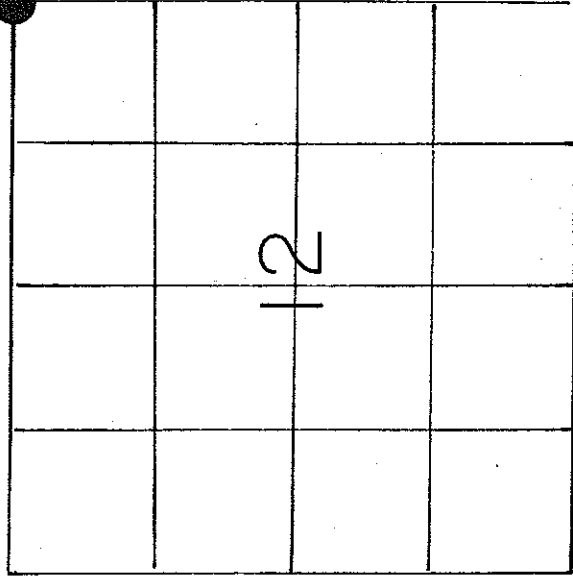


21805010000

U. S. PUBLIC LAND SURVEY MONUMENT RECORD

SECTION 12 T 18 N, R 5 W, TOWN OF BURNS

LA CROSSE COUNTY



LOCATION OF LANDMARK

Crew: William Jung
Perry Dahl
8/6/85

WISCONSIN COORDINATE SYSTEM	
North	
East	
Theta Angle	
Horiz. Order	
Vert. Order	
TYPE OF LANDMARK	
BERNTSEN	
BEARINGS ARE REFERENCED TO	
Assumed	

Describe any record evidence, monument evidence, testimonial evidence or any other material evidence you considered and whether the monument was found or restored through acceptance of an obliterated evidence location.

After traversing a mile to the North, South, and West, I accepted the old occupied fence corner as the best available evidence of the original government corner. Fred Holden, the old Monroe County Surveyor, was at this corner in April of 1908. I could not find his old bearing tree.

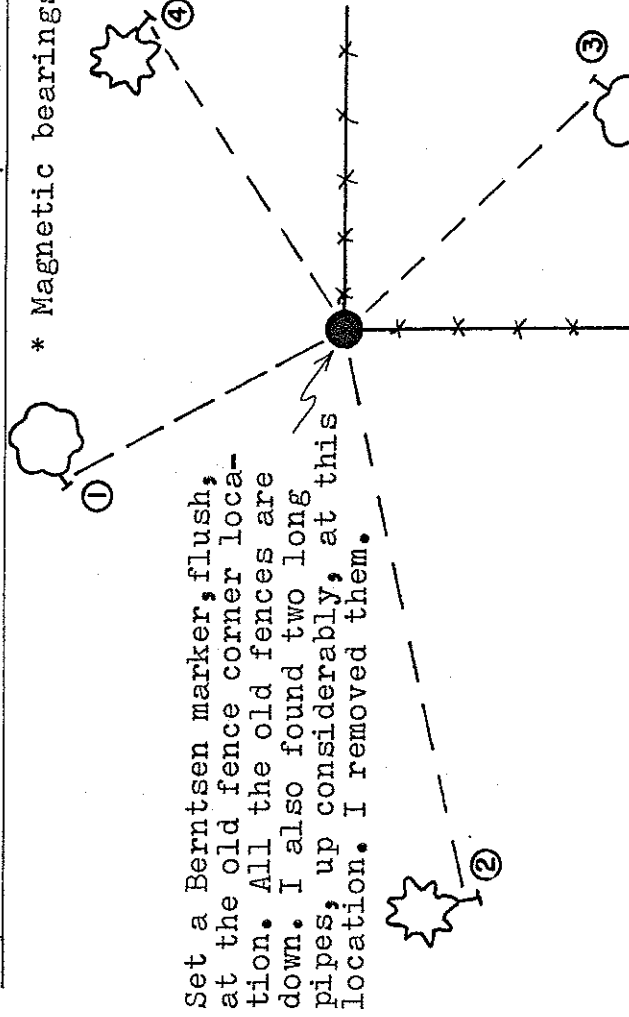
Describe or show any material discrepancy between the location of the restored corner and that of the corner previously restored or reestablished.
None

21805010000

RECORD OF DURABLE WITNESS MONUMENTS

NO	DESCRIPTION	BEARING	DISTANCE
1	10" DOUBLE-BLAZED OAK WITH P.K. NAIL	N20°W	33.69'
2	5" DOUBLE-BLAZED WHITE PINE WITH P.K. NAIL	S82°W	61.92'
3	8" DOUBLE-BLAZED OAK WITH P.K. NAIL	S36°E	38.92'
4	14" DOUBLE-BLAZED JACK PINE WITH P.K. NAIL	N51°E	36.67'

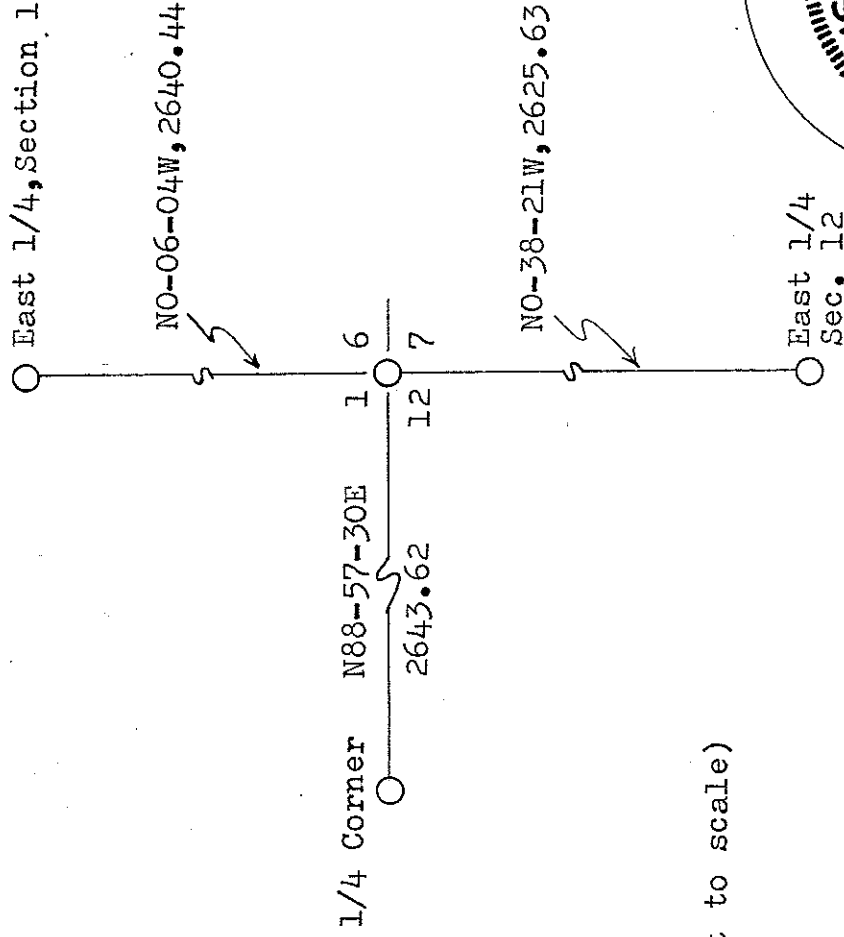
* Magnetic bearings by a hand compass.



Set a Berntsen marker, flush, at the old fence corner location. All the old fences are down. I also found two long pipes, up considerably, at this location. I removed them.

PLAN VIEW DRAWING OF REFERENCE TIES

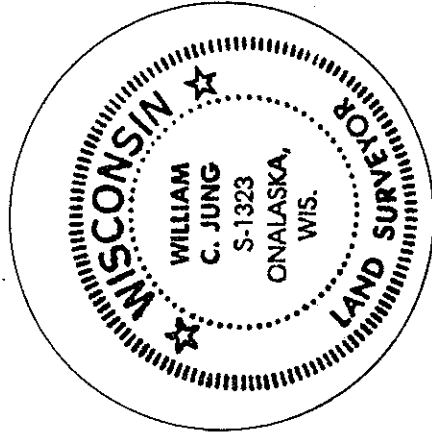
MAP SHOWING DISTANCE AND DIRECTION TO OTHER PUBLIC LAND SURVEY CORNERS USED FOR REESTABLISHING THE CORNER



(Not to scale)

I, William C. Jung, Deputy County Surveyor, HEREBY CERTIFY THAT THE CORNER LOCATION SHOWN ON THIS RECORD WAS DETERMINED BY ME OR UNDER MY DIRECTION AND CONTROL AND THAT THIS U. S. PUBLIC LAND SURVEY MONUMENT RECORD IS CORRECT AND COMPLETE TO THE BEST OF MY KNOWLEDGE AND BELIEF.

Signature William C. Jung Date 8/27/85



Seal