

**21805012000**

I, Harley A. Sime, do hereby certify that on the 15th day of August 1974, I found ~~(evidence)~~ (no evidence) of the W 1/4 corner of Section 6, T 18 N, R 4 W, Fourth Principal Meridian, and I re-established said corner according to the Wisconsin Statutes as shown and described hereon.

Dated this 7th day of Feb. 1978.

\_\_\_\_\_  
County Surveyor

Title

History of original corner establishment:

Fred Holden re-established this corner in April of 1908.

Description of corner evidence found:

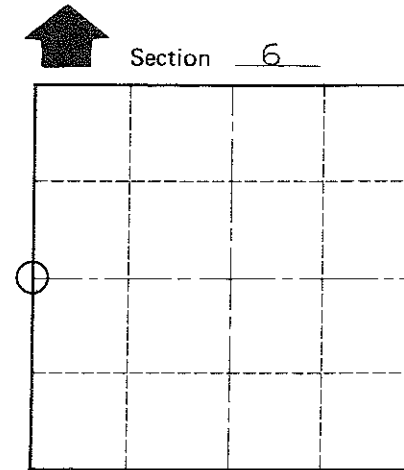
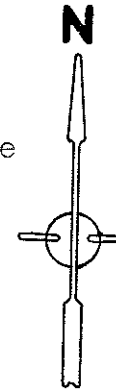
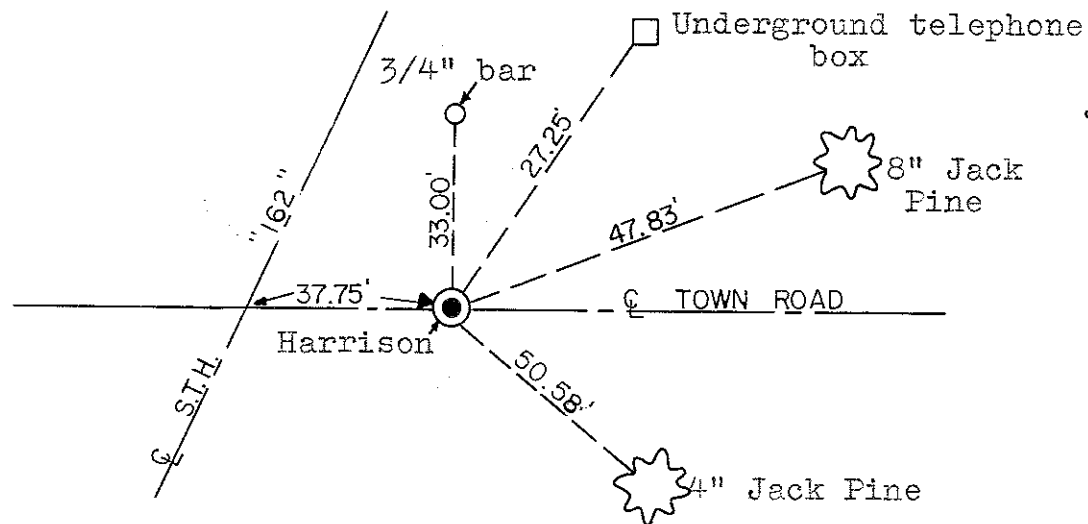
Set Harrison Monument 4" below surface of gravel road. Traversed Section 6 and set the corner at a computed location.

**Approved: HARLEY A. SIME  
MONROE CO. SURVEYOR**

Description of corner and witness monuments, references and accessories used to perpetuate the original or re-established location of this corner:

Witnesses to corner location:

D. Marten



O = LOCATION CORNER

T 18 N R 4 W

WISCONSIN

COUNTY SURVEYOR FORM NO. 1

SURVEY CONTROL ORDER

Horizontal	_____
Vertical	_____

WISCONSIN COORDINATE SYSTEM

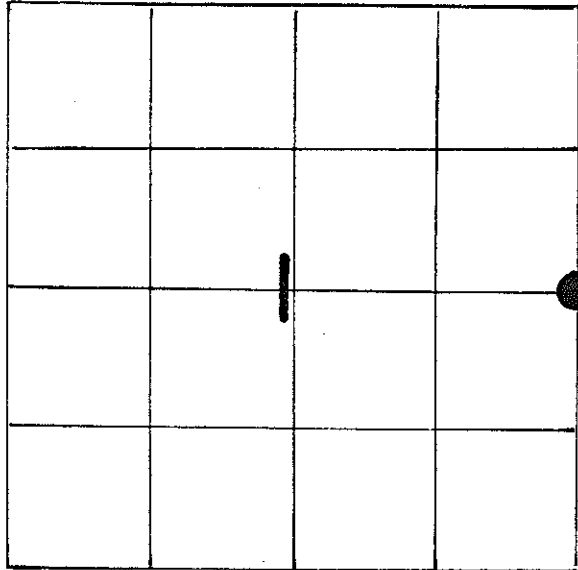
Corner	East (X)	North (Y)	Elevation (Z)	Zone
Control Sta. Name				

City, Village or Town Little Falls

County of Monroe

U. S. PUBLIC LAND SURVEY MONUMENT RECORD

SECTION 1 T 18 N, R 5 W, TOWN OF BURNS  
 LA CROSSE COUNTY



LOCATION OF LANDMARK

Crew: William Jung  
 Perry Dahl  
 6/20/85

WISCONSIN COORDINATE SYSTEM
North
East
Theta Angle
Horiz. Order
Vert. Order
TYPE OF LANDMARK HARRISON MARKER
BEARINGS ARE REFERENCED TO Assumed

Describe any record evidence, monument evidence, testimonial evidence or any other material evidence you considered and whether the monument was found or restored through acceptance of an obliterated evidence location.

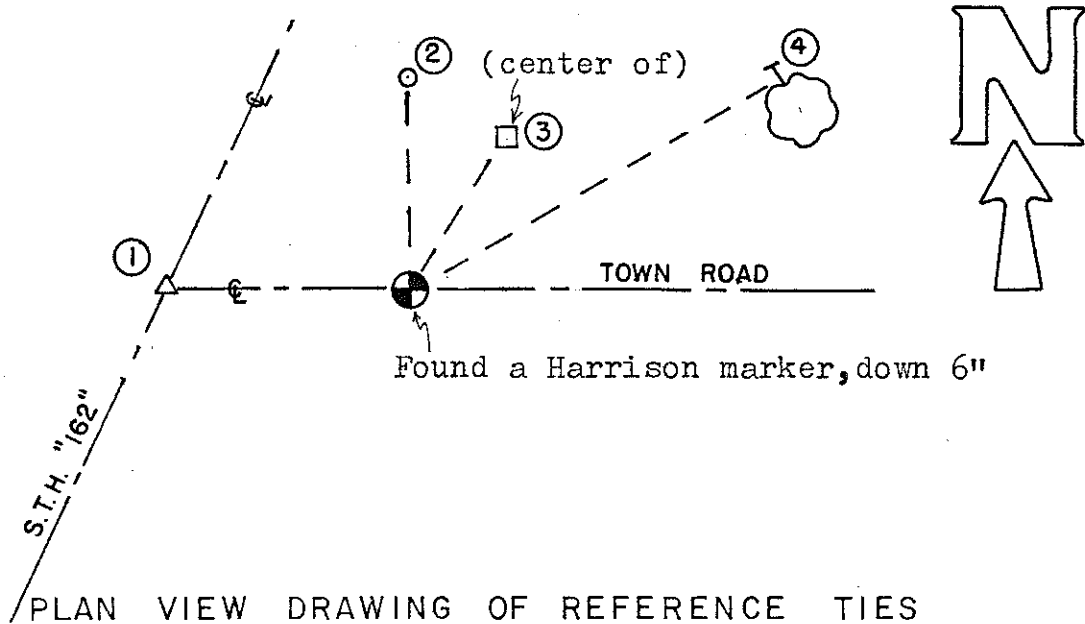
Fred Holden, the old Monroe County Surveyor, re-established this corner in April of 1908. "Duke" Marten set a Harrison marker at this corner on August 15, 1974 after traversing out Section 6-T18N-R4W. I found this Harrison marker. Marten's bearing trees were both gone.

Describe or show any material discrepancy between the location of the restored corner and that of the corner previously restored or reestablished.

None known.

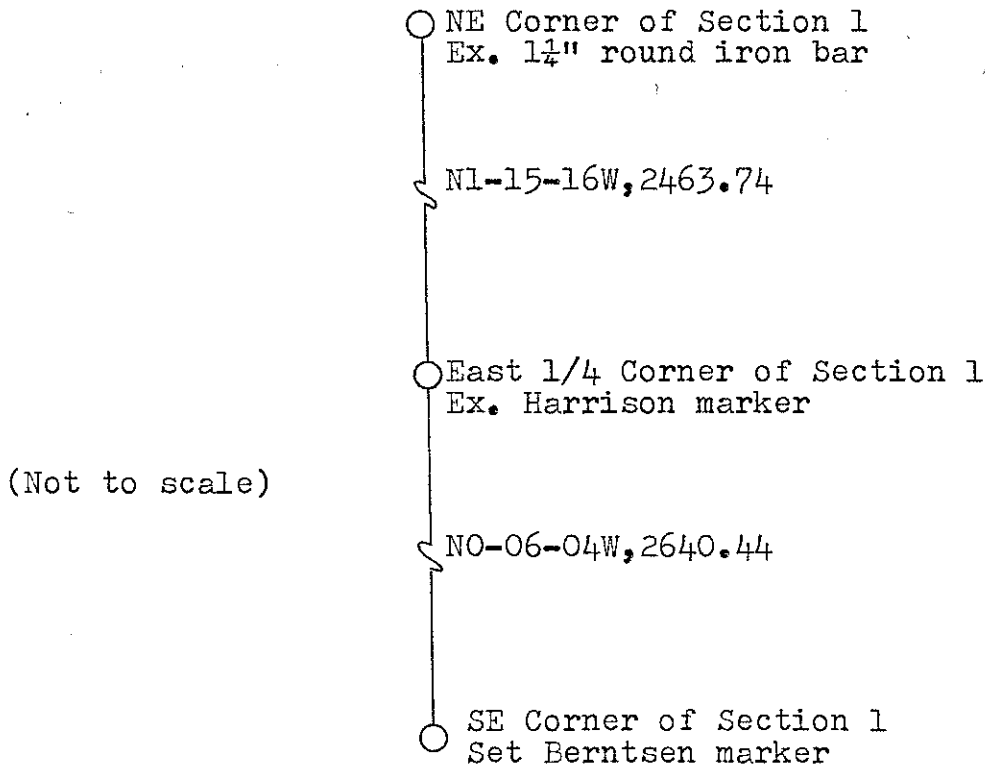
RECORD OF DURABLE WITNESS MONUMENTS

NO	DESCRIPTION	BEARING	DISTANCE
1	SET RAILROAD SPIKE	-----	38.2'
2	3/4" IRON BAR (flush)	-----	33.03'
3	(base of) UNDERGROUND TELEPHONE BOX (about 9.5' East of Section line)	-----	27.3'
4	P.K. NAIL IN 8" OAK TREE (double blazed)	N65°E ±	67.5'



PLAN VIEW DRAWING OF REFERENCE TIES

MAP SHOWING DISTANCE AND DIRECTION TO OTHER PUBLIC LAND SURVEY CORNERS USED FOR REESTABLISHING THE CORNER



I, William C. Jung, Deputy County Surveyor,  
 HEREBY CERTIFY THAT THE CORNER LOCATION SHOWN ON THIS RECORD  
 WAS DETERMINED BY ME OR UNDER MY DIRECTION AND CONTROL AND  
 THAT THIS U. S. PUBLIC LAND SURVEY MONUMENT RECORD IS CORRECT  
 AND COMPLETE TO THE BEST OF MY KNOWLEDGE AND BELIEF.

William C. Jung                      8/30/85  
 Signature                                      Date

