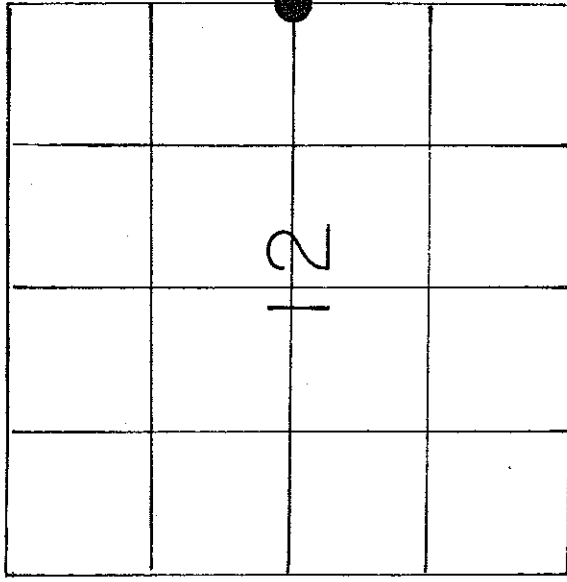


21805122000

U. S. PUBLIC LAND SURVEY MONUMENT RECORD

SECTION 12 T 18 N, R 5 W, TOWN OF BURNS

LA CROSSE COUNTY



LOCATION OF LANDMARK

Crew: William Jung
Perry Dahl

8/6/85

SIGN PLACED 11-08-89 *Ad*

WISCONSIN COORDINATE SYSTEM	
North	
East	
Theta Angle	
Horiz. Order	
Vert. Order	
TYPE OF LANDMARK	
BERNTSEN	
BEARINGS ARE REFERENCED TO	
Assumed	

Describe any record evidence, monument evidence, testimonial evidence or any other material evidence you considered and whether the monument was found or restored through acceptance of an obliterated evidence location.

Either Schroeder or Kenyon from Monroe County were at this corner in May of 1886. Fred Holden, the old Monroe County Surveyor, was at this corner in April of 1908 and found the original corner. Holden blazed a new bearing tree, a 16" jack oak, S42E, 22 links. I found an oak stump to the South. Using Holden's data, I measured North and found that the fence corner fits. Therefore, I accepted the old occupied corner as the best available evidence of the original government corner.

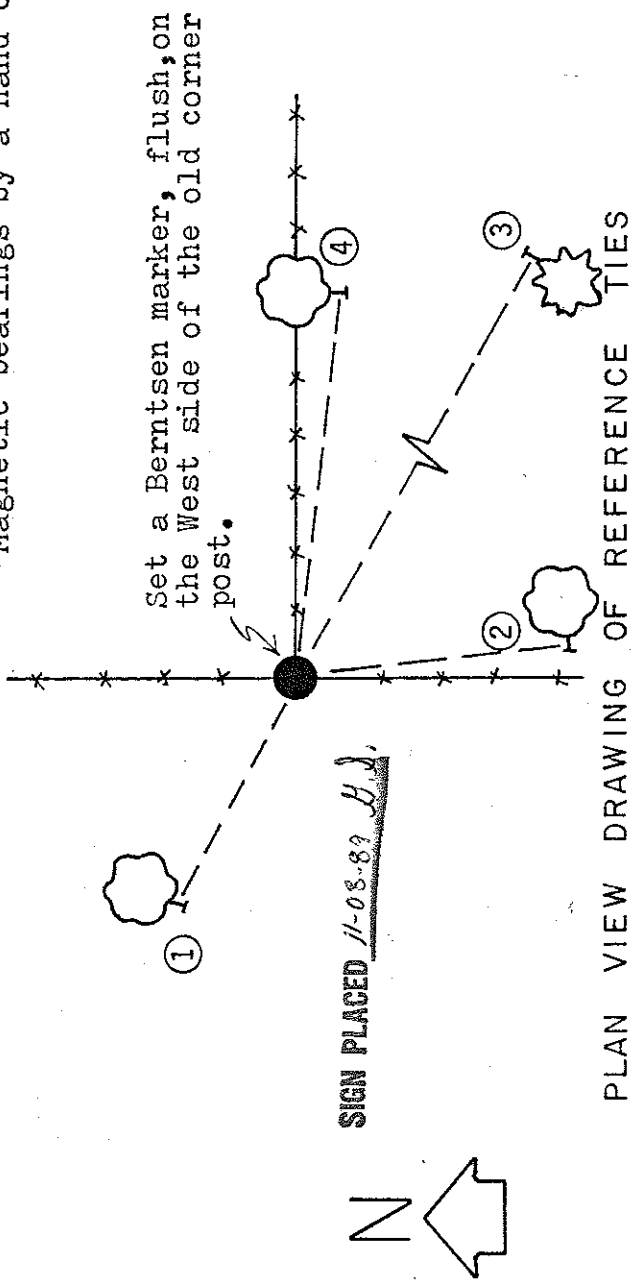
*As a further note, it would appear that whoever measured off the lots to the NW used this fence corner. Describe or show any material discrepancy between the location of the restored corner and that of the corner previously restored or reestablished.
None known

21805122000

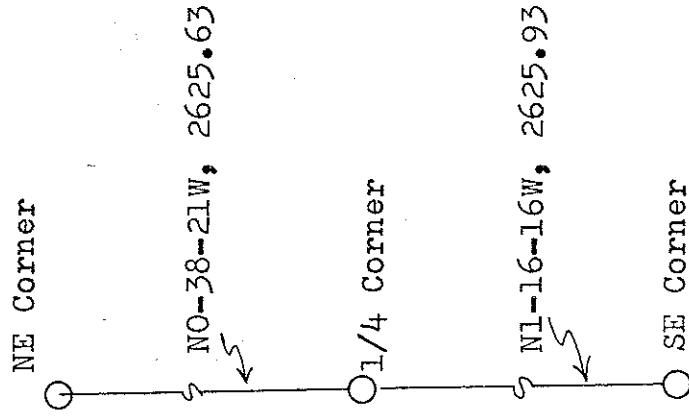
RECORD OF DURABLE WITNESS MONUMENTS

NO	DESCRIPTION	BEARING	DISTANCE
1	P.K. NAIL IN 9" DOUBLE-BLAZED OAK TREE	N53°W	41.69'
2	P.K. NAIL IN 16" DOUBLE-BLAZED OAK TREE	S16°E	44.43'
3	P.K. NAIL IN 8" DOUBLE-BLAZED WHITE PINE	S55°E	102.55'
4	P.K. NAIL IN 18" DOUBLE-BLAZED OAK TREE	N87°E	60.78'

*Magnetic bearings by a hand compass.



MAP SHOWING DISTANCE AND DIRECTION TO OTHER PUBLIC LAND SURVEY CORNERS USED FOR REESTABLISHING THE CORNER



(Not to scale)

I, William C. Jung, Deputy County Surveyor, HEREBY CERTIFY THAT THE CORNER LOCATION SHOWN ON THIS RECORD WAS DETERMINED BY ME OR UNDER MY DIRECTION AND CONTROL AND THAT THIS U. S. PUBLIC LAND SURVEY MONUMENT RECORD IS CORRECT AND COMPLETE TO THE BEST OF MY KNOWLEDGE AND BELIEF.

Signature: William C. Jung Date: 8/27/85

