

CERTIFICATE

I, K. DON PEDERSON, do hereby certify that on the 8TH day of JANUARY, 2002, I found ~~(evidence)~~ (no evidence) of the W 1/4 corner of SEC. 18, T 18 N, R 4 W Fourth Principal Meridian, and I re-established said corner according to the Wisconsin Statutes as shown and described hereon.

Dated this 28TH day of MARCH, 2002.

K. Don Pederson
Registered Land Surveyor
 Title

CERTIFIED LAND CORNER

History of corner establishment since Original Government Survey

WHITESIDE SET ORIGINAL CORNER NOVEMBER 1845.

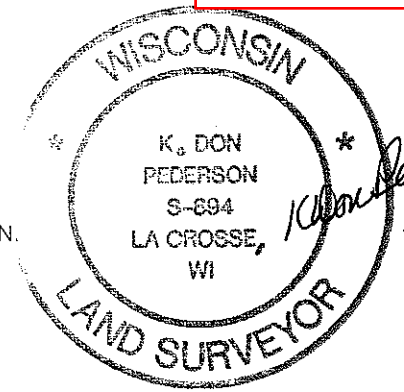
Description of corner evidence found:

NO ORIGINAL EVIDENCE FOUND

SET CORNER PROPORTIONED BETWEEN SW AND NW CORNERS OF SECTION.

No. 54

21805132000

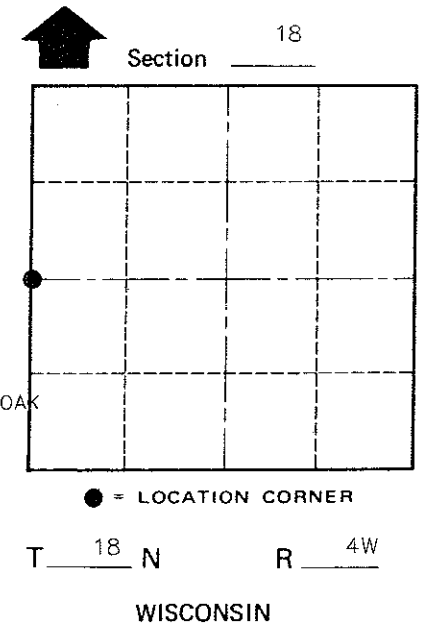
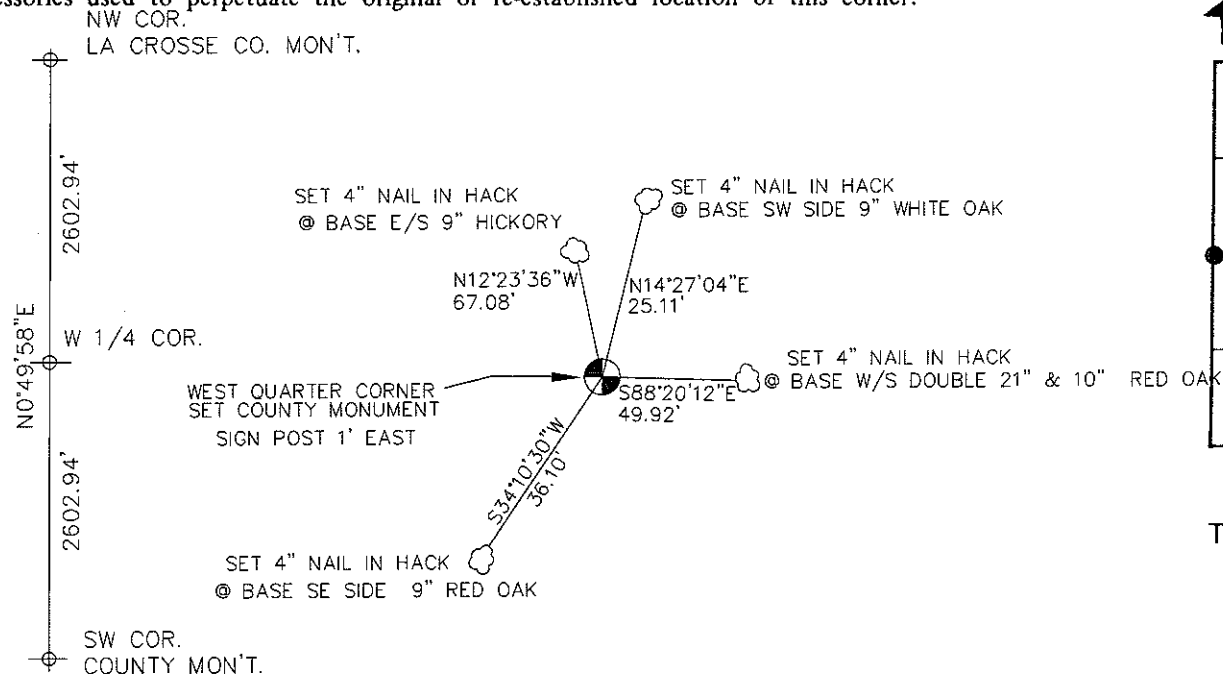


COUNTY SURVEYOR FORM NO. 1

Description of corner and witness monuments, references and accessories used to perpetuate the original or re-established location of this corner:

Witnesses to corner location:

K. DON PEDERSON
PAUL R. CHAFER



SURVEY CONTROL ORDER

Horizontal	_____
Vertical	_____

WISCONSIN COORDINATE SYSTEM

Corner	East (X)	North (Y)	Elevation (Z)	Zone
Control Sta. Name				

City, Village or Town LITTLE FALLS
 County of MONROE