

21805252000

I, Gary L. Dechant, do hereby certify that on the 6th day of March 19 84, I found (evidence) ~~(no evidence)~~ of the W¹/₄ corner of Section 30, T 18 N, R 4 W Fourth Principal Meridian, and I re-established said corner according to the Wisconsin Statutes as shown and described hereon.

Dated this 8th day of March 19 84.

Gary L. Dechant

Registered Land Surveyor, S-1744
Title

History of corner establishment since Original Government Survey

Fred Holden in April of 1899, at that time Deputy County Surveyor under Hamilton LaRue, was at this corner and shows two bearing trees in his notes for this corner.

Description of corner evidence found:

Found a stone monument with half a cross at a four way fence corner. Used the stone as the corner as it fits line between the section corners extremely well and is half way between the section corners within 1'±.

We do not know who set the stone as it is not on record in the Monroe County Courthouse.

COUNTY SURVEYOR FORM NO. 1

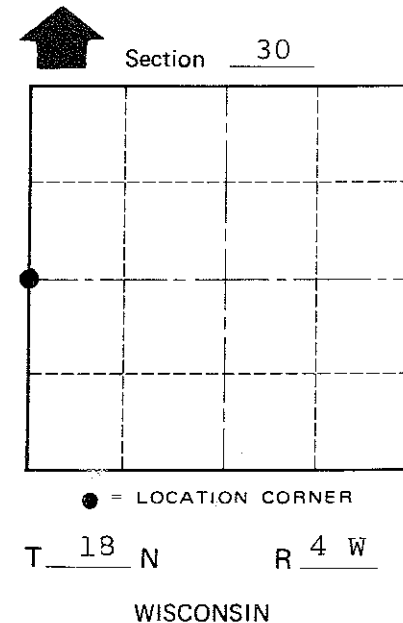
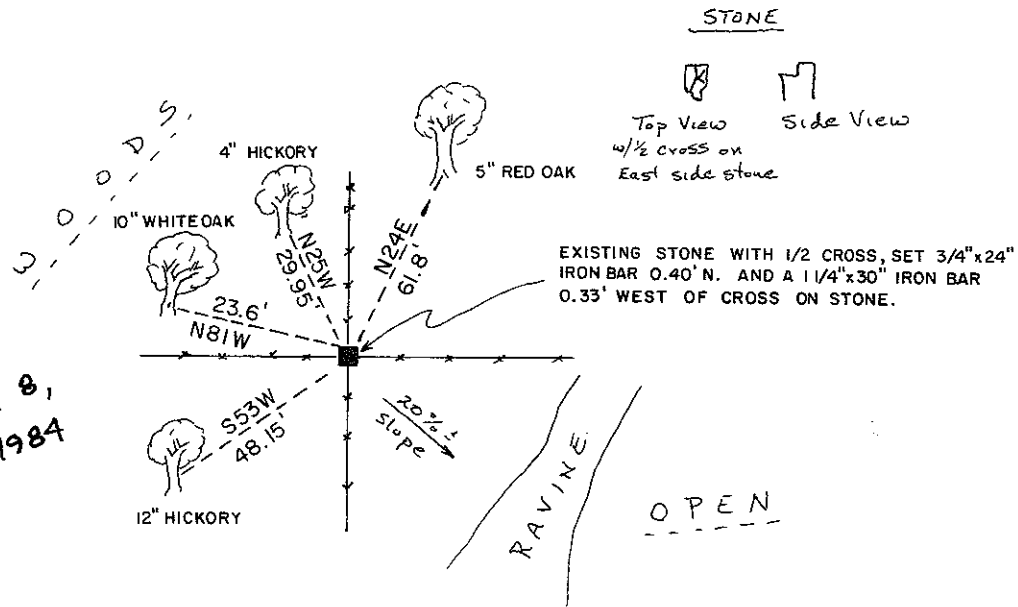
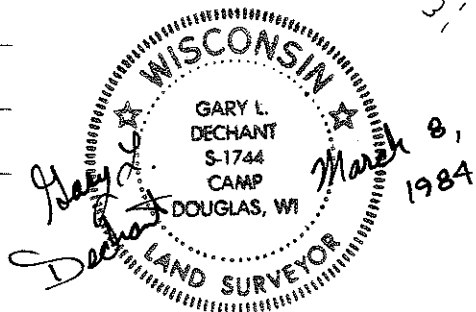
Description of corner and witness monuments, references and accessories used to perpetuate the original or re-established location of this corner:

Witnesses to corner location:

Lawrence A. Feddersen S-1226

Gary L. Dechant

Approved: **HARLEY A. SIME**
MONROE CO. SURVEYOR



(Trees double blazed, scribed, and with N&C's set)

SURVEY CONTROL ORDER

Horizontal _____
Vertical _____

WISCONSIN COORDINATE SYSTEM

Corner	East (X)	North (Y)	Elevation (Z)	Zone
Control Sta. Name				

~~City, Village or~~ Town Sparta
County of Monroe