

21805362000

I, William C. Jung, do hereby certify that on the 14th day of January 1975, I found (evidence) (~~no evidence~~) of the W 1/4 corner of Section 31, T 18 N, R 4 W, Fourth Principal Meridian, and I re-established said corner according to the Wisconsin Statutes as shown and described hereon.

History of original corner establishment:

No known history recorded since the original government survey.

Description of corner evidence found:

Accepted fence corner as best available evidence. Local land owner, Pat Haas, said this was the corner accepted by three land owners. Fits corner 1/2 mile South for distance and bearing. Set Harrison by old fence post at three way fence.

Dated this 6th day of Dec. 1977.

William C. Jung, R.L.S. 1323

Crew Chief, County Surveyor's
Title Office

Description of corner and witness monuments, references and accessories used to perpetuate the original or re-established location of this corner:

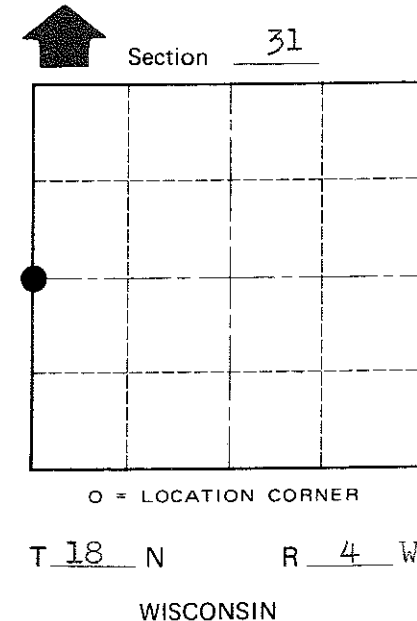
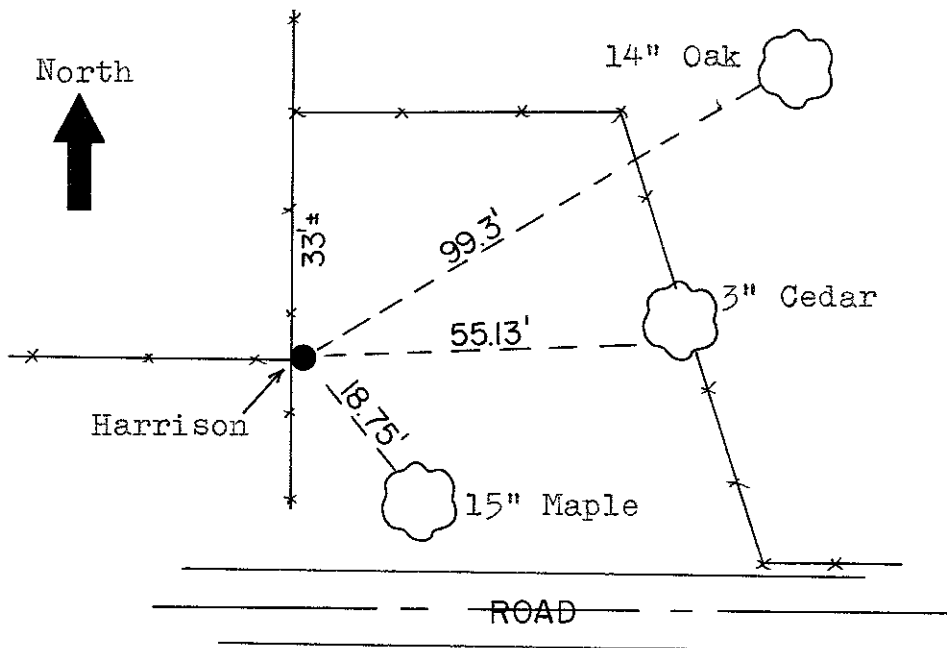
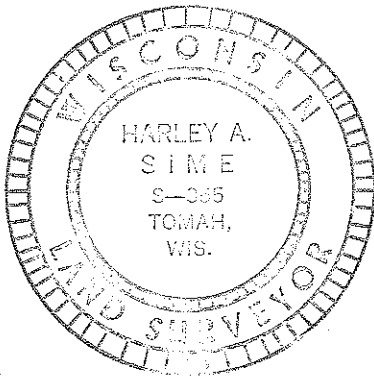
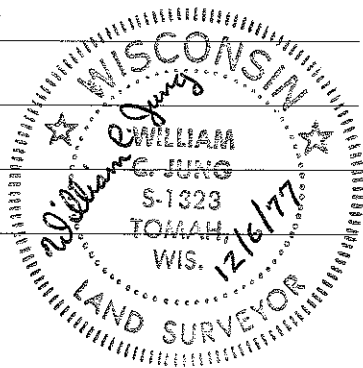
Set Harrison, up 2", in garbage pile.
All trees blazed with N&C's set.

Witnesses to corner location:

W. Jung

C. Pietz

COUNTY SURVEYOR FORM NO. 1



SURVEY CONTROL ORDER

Horizontal	_____
Vertical	_____

Approved: Harley Sime
County Surveyor

WISCONSIN COORDINATE SYSTEM

Corner	East (X)	North (Y)	Elevation (Z)	Zone
Control Sta. Name				

City, Village or Town Sparta

County of Monroe