

21501100020

I, Harley A. Sime, do hereby certify that on the 11th day of November 1980, I found ~~(evidence)~~ (no evidence) of the South 1/4 corner of Section 10, T 15 N, R 1 W Fourth Principal Meridian, and I re-established said corner according to the Wisconsin Statutes as shown and described hereon.

History of corner establishment since Original Government Survey

Davy was here in November of 1926. He set an iron rod.

Description of corner evidence found:

Set on line with C¹/₄ and CS 1/16 corners and at the same distance as between the 2 said corners. Could not find Davy's bar. A local farmer said the corner was supposed to be South of the fence corner. Our final location agrees with this opinion. Set a 1 1/4" iron bar.

Dated this 11th day of Nov. 1980.

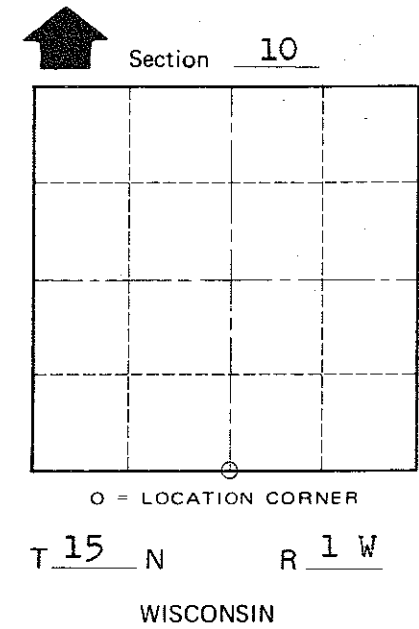
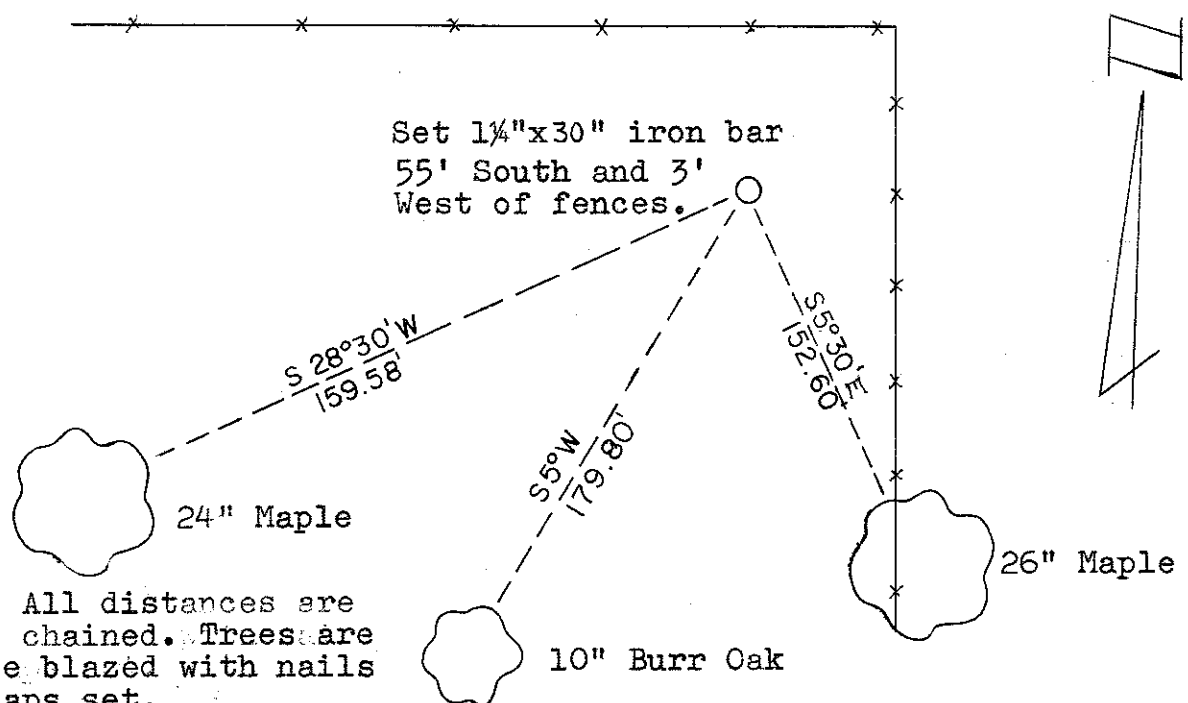
Approved: HARLEY A. SIME
MONROE CO. SURVEYOR

COUNTY SURVEYOR FORM NO. 1

Description of corner and witness monuments, references and accessories used to perpetuate the original or re-established location of this corner:

Witnesses to corner location:

Bryan Meyer
Scott Sowers



Note: All distances are slope chained. Trees are double blazed with nails and caps set.
WISCONSIN COORDINATE SYSTEM

SURVEY CONTROL ORDER

Horizontal	_____
Vertical	_____

Corner	East (X)	North (Y)	Elevation (Z)	Zone
Control Sta. Name				

City, Village ~~or~~ Town of Wellington
County of Monroe
Wisconsin