

**U.S. PUBLIC LAND CORNER
MAINTENANCE**

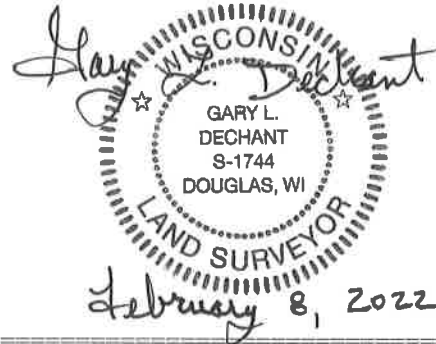
#126

Corner ID: S1/4 Sec. 34, T19N-R1E

41901340020

<u>DATE</u>	<u>CREW</u>	<u>MONUMENT INFO</u>	
February 7, 2022	Zachariah P. Dechant Gary L. Dechant	Found 2" capped iron pipe, up 2', south edge of open swamp, wooded to the south and east, sign 1/2' south	
		<u>Bearing</u>	<u>Distance</u>
		1) Set 3/4"x24" round iron bar 7' SW of 14" White Pine	N29E 61.50'
		2) Set 3/4"x24" round iron bar 4' west of 10" Red Oak	East 46.48'
		3) Set 3/4"x24" round iron bar 4' NW of 12" White Oak	S37E 56.40'
		4) Set 3/4"x24" round iron bar 4' north of 4" White Pine	South 75.37'

Compass bearings
Trees double blazed



CERTIFICATE

I, Garold Sime, do hereby certify that on the 20th day of December, 2012, I found (evidence) NO EVIDENCE of the South 1/4 corner of Section 34, T 19 N, R 1E Fourth principle Meridian, and I re-established said corner according to the Wisconsin Statutes as shown and described hereon.

Dated this 28th day of December, 2012

Garold A. Sime
 Monroe County Surveyor
 Title

CERTIFIED LAND CORNER

No. 126
 41901340020

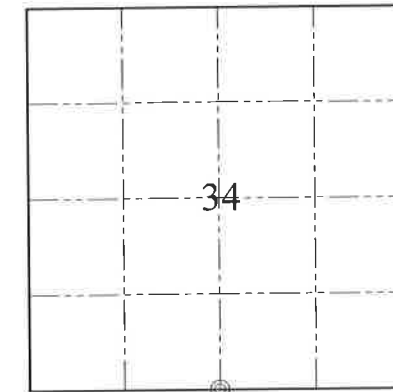
History of corner establishment since Original Government Survey

Kennedy was surveying in this area in the 1930's and may have set this pipe.

Description on how corner was established.

Found un-recorded Capped Iron Pipe and accepted as corner.

Section 34



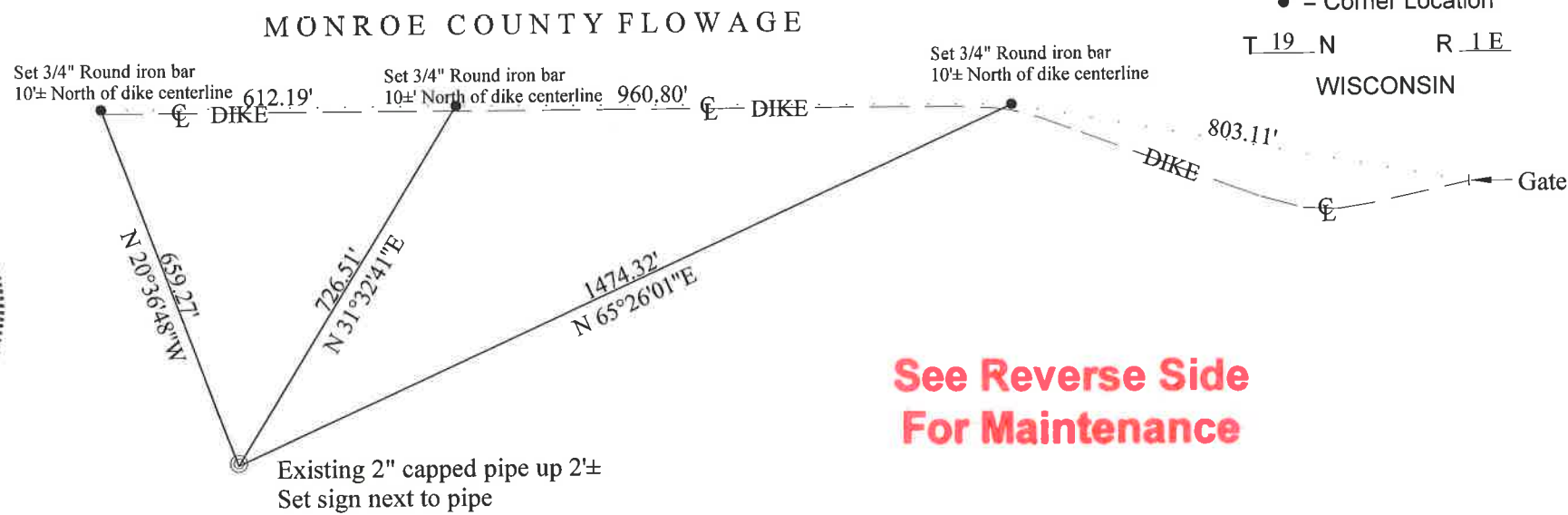
● = Corner Location

T 19 N R 1E
 WISCONSIN

Description of corner and witness monuments, references and accessories used to perpetuate the original or re-established location of this corner.

Witnesses to corner location:

Garold Sime
Mitchell Sime



See Reverse Side For Maintenance

SURVEY CONTROL ORDER

Horizontal				
Vertical				
Corner	Northing 425873.11237	Easting 744363.58495	Elevation	
Control Station Name				

MONROE COUNTY COORDINATE SYSTEM NAD 1983 (91) Datum

City, Village or Town of Scott
 County of Monroe