

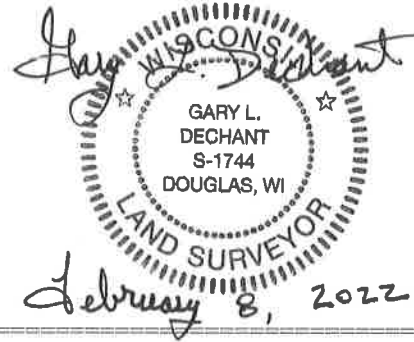
**U.S. PUBLIC LAND CORNER
MAINTENANCE**

#48

**Corner ID: S1/4 Sec. 9, T19N-R1E
41901090020**

<u>DATE</u>	<u>CREW</u>	<u>MONUMENT INFO</u>
February 4, 2022	Zachariah P. Dechant Gary L. Dechant	Found Harrison, intact, set sign 1' north, approx.. 50' south and 13' west of trail intersection
		<u>Bearing</u> <u>Distance</u>
1) Set 3/4"x24" round iron bar 4' SW of 12" White Pine		N50E 66.08'
2) Set 3/4"x24" round iron bar 4' north of 13" Red Oak		South 51.27'
3) Set 3/4"x24" round iron bar 4' NE of 12" Red Pine		S57W 40.29'
4) Set 3/4"x24" round iron bar 4' SE of 24" double Maple (1985 BT)		N64W 14.81'

Compass bearings
Trees double blazed



41901090020

I, GARY L. DECHANT, do hereby certify that on the 16 day of FEBRUARY 1985, I found ~~(evidence)~~ (no evidence) of the N 1/4 corner of SECTION 16, T 19 N, R 1E Fourth Principal Meridian, and I re-established said corner according to the Wisconsin Statutes as shown and described hereon.

History of corner establishment since Original Government Survey

No KNOWN HISTORY SINCE THE ORIGINAL GOVERNMENT SURVEY.

Dated this 4 day of MARCH 1985.

Gary L. Dechant
REGISTERED LAND SURVEYOR, S-1744
Title

Description of corner evidence found:

SET BY SINGLE PROPORTIONATE MEASUREMENT.

See Reverse Side For Maintenance

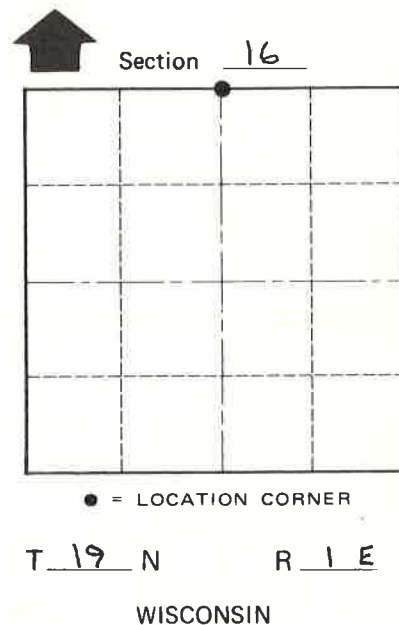
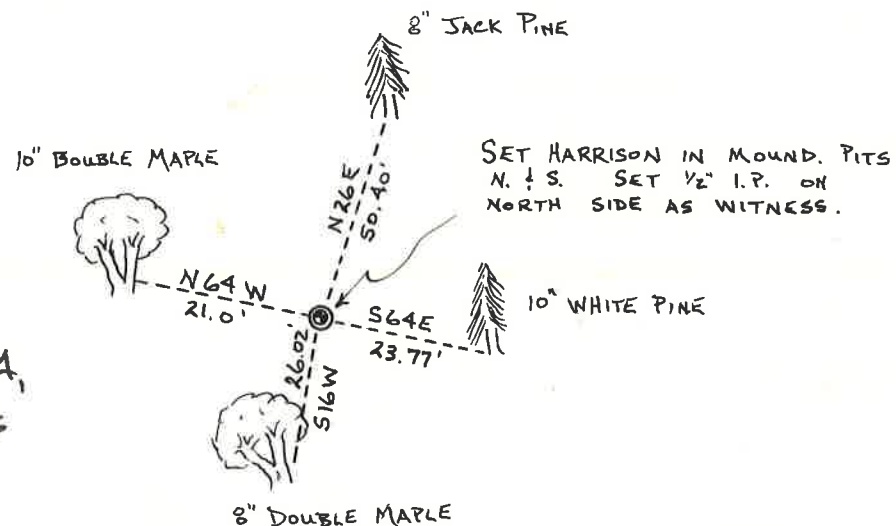
COUNTY SURVEYOR FORM NO. 1

Description of corner and witness monuments, references and accessories used to perpetuate the original or re-established location of this corner:

Witnesses to corner location:

DANNY L. DRAEGER D/D

GARY L. DECHANT D/D



SURVEY CONTROL ORDER

Horizontal _____
Vertical _____

WISCONSIN COORDINATE SYSTEM

Corner	East (X)	North (Y)	Elevation (Z)	Zone
Control Sta. Name				

(TREES DOUBLE BLAZED WITH R.R. SPIKES SET)

City, Village or Town SCOTT
County of MONROE