

Filed 1-25-2022

MCIROE COUNTY

Survey Monument Record

TYPE OF MONUMENT: 1/4" X 24" O.D. iron pipe

STATE PLANE COORDINATES: N _____ E _____

ELEVATION - M.S.L. DATUM: _____

THETA ANGLE: _____

FIELD BOOK: _____ PAGE _____

BASIS FOR MONUMENT LOCATION

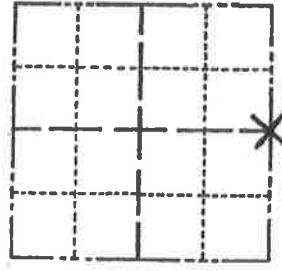
(Use reverse side if necessary)

Show info such as: History of corner, with reference to Vol. and pg. dates, surveyor; exact description of monument replaced; if location computed, by taped or EDM traverse; landowner remarks, etc.

Accepted the existing fence corner as the true location for this corner.

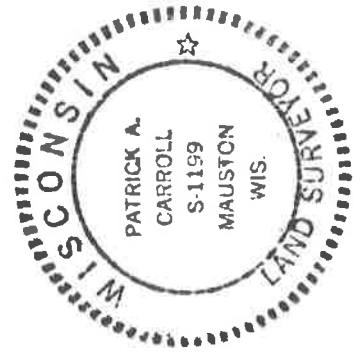
See Plat of Survey by Carroll Surveying of Mauston, Wis. done for Mark Bliss for further reference to this corner.

CORNER NO. 128
SECTION 33
TOWN 15
RANGE 1E



LOCATION
(Indicated by 'X')

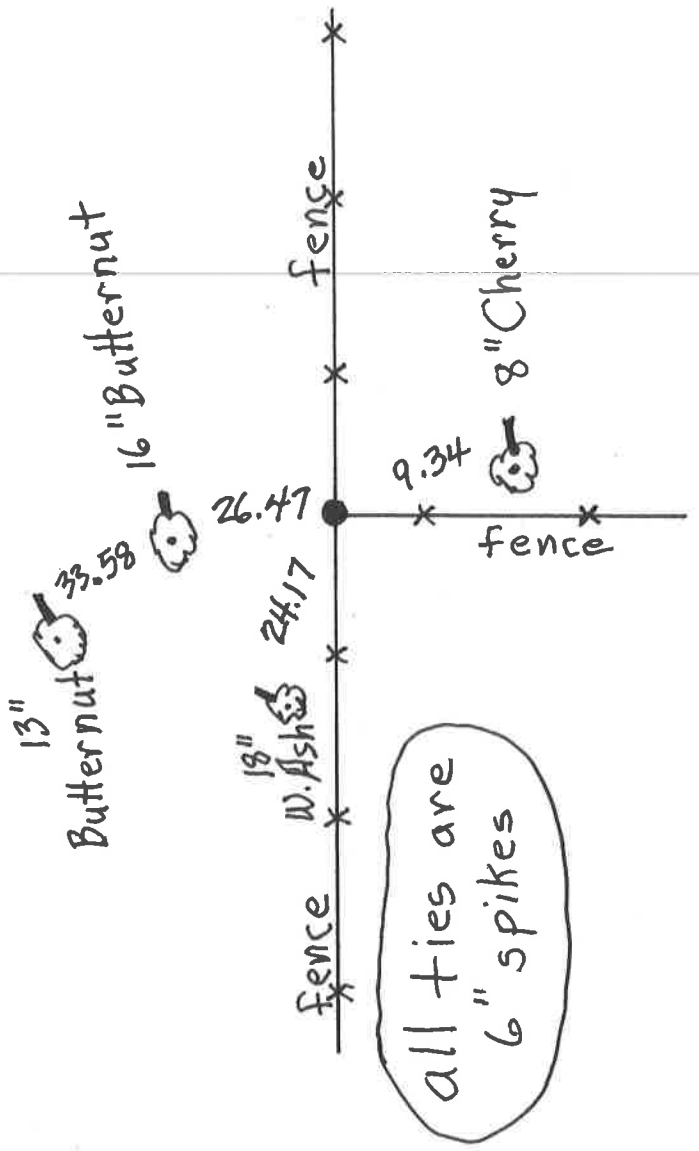
SEAL:



CERTIFIED CORRECT:
Patrick A. Carroll
Registered Land Surveyor
DATE: 01/28/02

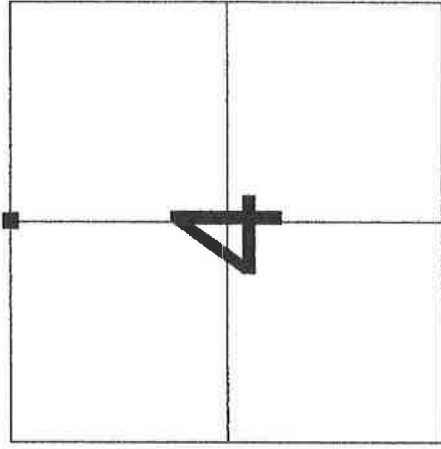
TIE SKETCH

(Show at least four ties)



VERNON COUNTY CERTIFIED U.S. PUBLIC LAND SURVEY MONUMENT RECORD

INSTRUCTIONS: THIS RECORD SHALL SHOW THE LOCATION OF THE CORNER AND SHALL INCLUDE ALL OF THE FOLLOWING ELEMENTS (A-I)



SECTION 4
TOWN 14 NORTH, RANGE 1 EAST

(A) IDENTIFY THE CORNER BY REFERENCE TO THE U.S. PUBLIC LAND SURVEY SYSTEM

■ = CORNER MONUMENT RESTORED

WITNESSES TO CORNER LOCATION:

- 1) Robert M. Lampman
- 2) Jessica A. Zaimor

VERNON COUNTY COORDINATES - NAD83(1991) - SURVEY FEET

NORTHING: 212031.934

EASTING: 836034.135

MONROE COUNTY COORDINATES - NAD83(1991) - SURVEY FEET

NORTHING: 301005.465

EASTING: 739585.094

(B) DESCRIBE ANY RECORD EVIDENCE, MONUMENT EVIDENCE, OCCUPATIONAL EVIDENCE, TESTIMONIAL EVIDENCE OR ANY OTHER MATERIAL EVIDENCE YOU CONSIDERED, AND WHETHER THE MONUMENT WAS FOUND OR PLACED.

Accepted location of existing 1-1/2" o.d. iron pipe at occupied fence corner as the best available evidence of the original corner location. Replaced the existing iron pipe with a Vernon County Lunde Monument.

(See reverse side for corner history.)

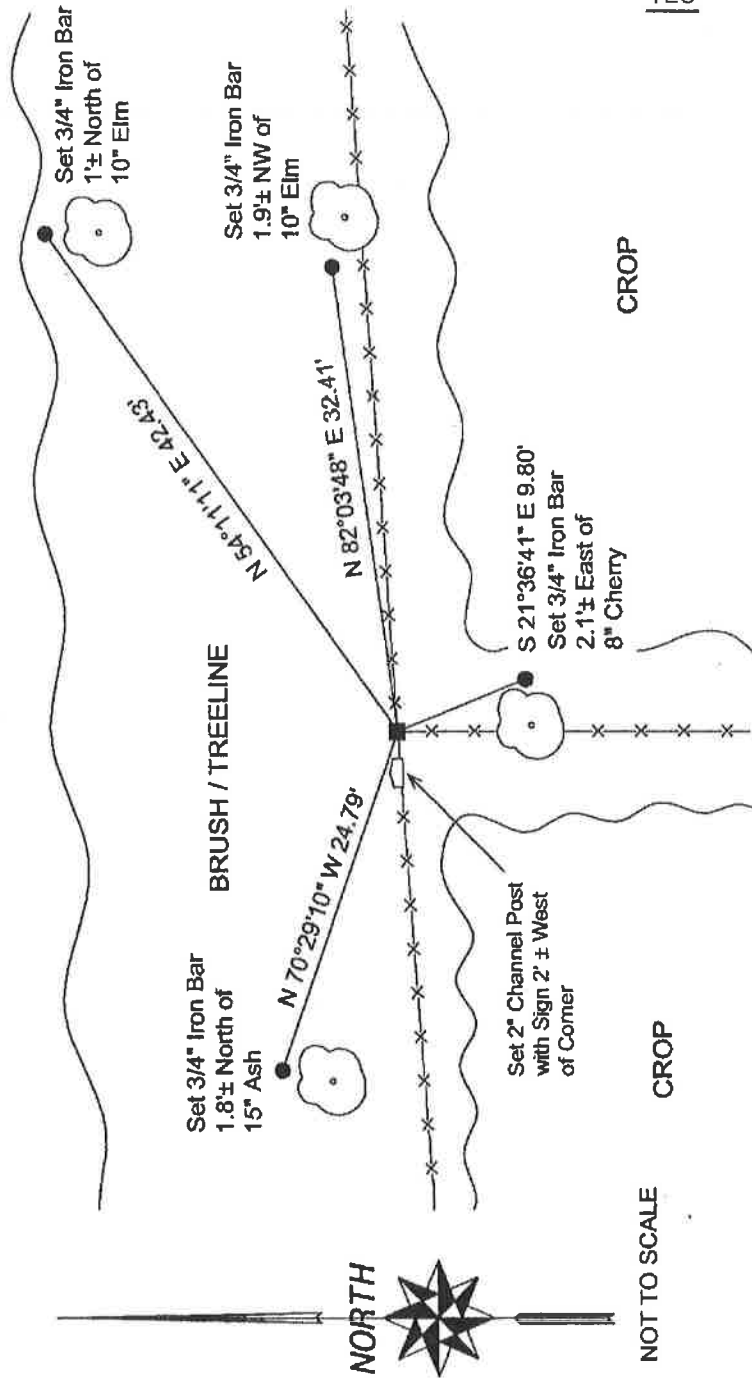
(C) IN THE PLAN VIEW DRAWING BELOW, PROVIDE REFERENCE TIES TO AT LEAST 4 WITNESS MONUMENTS OR, IF THE LOCATION IS WITHIN A MUNICIPALITY, TO AT LEAST 2 WITNESS MONUMENTS. (WITNESS MONUMENTS SHALL BE MADE OF CONCRETE, NATURAL STONE, IRON, OR OTHER EQUALLY DURABLE MATERIAL.) DESCRIBE WITNESS MONUMENTS.

(D) SHOW A PLAN VIEW DRAWING, DEPICTING THE RELEVANT MONUMENTS AND REFERENCE TIES, WHICH IS SUFFICIENTLY DETAILED TO ENABLE ACCURATE RELOCATION OF THE CORNER MONUMENT IF IT IS DISTURBED.

LEGEND

- FOUND EXISTING 1-1/2" o.d. IRON PIPE - REPLACED WITH VERNON COUNTY LUNDE MON.
- SET 3/4" X 24" ROUND IRON BAR FOR WITNESS MONUMENT

FALLOW



NOT TO SCALE

CROP

CROP

(E) DESCRIBE ANY MATERIAL DISCREPANCY BETWEEN THE LOCATION OF THE CORNER AS RESTORED OR REESTABLISHED AND THE LOCATION OF THAT CORNER AS PREVIOUSLY RESTORED OR REESTABLISHED BY DISTANCE AND DIRECTION. SHOW THE DISCREPANCY ON THE PLAN VIEW DRAWING UNDER (D), ABOVE. SHOW THE DISTANCES BETWEEN THE CORNER AS PREVIOUSLY RESTORED OR REESTABLISHED AND (1) THE CORNER AS RESTORED OR REESTABLISHED, AND (2) TO AT LEAST 2 OF THE WITNESS MONUMENTS AS SHOWN ON THE DRAWING IN (D), ABOVE.

N/A

(F) WAS THE CORNER RESTORED THROUGH ACCEPTANCE OF (1) AN OBLITERATED EVIDENCE LOCATION, OR (2) A FOUND PERPETUATED LOCATION?

(2) A FOUND PERPETUATED LOCATION

(G & H) WAS THE CORNER REESTABLISHED THROUGH LOST CORNER PROPORTIONATE METHODS? IF SO SHOW THE METHOD, INCLUDING THE DIRECTIONS AND DISTANCES TO OTHER PUBLIC LAND SURVEY CORNERS USED AS EVIDENCE OR USED FOR PROPORTIONING IN DETERMINING THE CORNER LOCATION.

N/A

(***) ANY ADDITIONAL INFORMATION RELATED TO CORNER LOCATION

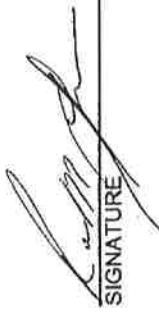
CORNER HISTORY:

-Original government corner location established by Stuntz & Sargent in 1851.

-W.H.Knower lists the corner as government and renewed on a subdivision of Section 4, T14N, R1E dated July of 1888. Knower established two new witness trees for the corner.

-Patrick Carroll shows a 1-1/4" o.d. iron pipe set at the corner as part of a survey in Section 33, T15N, R1E dated January 26, 2002.

(I) I, ROBERT M. LAMPMAN, CERTIFY THAT THE LOCATION SHOWN ON THIS RECORD WAS DETERMINED BY ME OR UNDER MY DIRECTION AND CONTROL AND THAT THIS U.S. PUBLIC LAND SURVEY MONUMENT RECORD IS CORRECT AND COMPLETE TO THE BEST OF MY KNOWLEDGE AND BELIEF.


SIGNATURE

3-10-04
DATE

AFFIX LAND SURVEYOR SEAL

