

**U.S. PUBLIC LAND CORNER  
MAINTENANCE**

**#121**

**Corner ID: SE Sec. 36, T19N-R1E  
41901360000**

<u>DATE</u>	<u>CREW</u>	<u>MONUMENT INFO</u>	<u>Bearing</u>	<u>Distance</u>
January 6, 2022	Zachariah P. Dechant Gary L. Dechant	Found 2½" iron pipe, west side of creek, 50' south of road, survey sign 10' west		
1) Set 3/4"x24" round iron bar 4' west of 10" Maple			S86E	66.93'
2) Existing ¾" rebar 2010 tie Juneau County Tie sheet			S52E	33.30' (33.45')
3) Existing ¾" rebar 2010 tie Juneau County tie sheet			S33W	34.92' (34.87')
4) Set 3/4"x24" iron bar, down 10"			S66W	34.46'

Compass bearings  
Trees double blazed



I, William C. Jung, do hereby certify that on the 14th day of May 1982, I found ~~(no evidence)~~ (no evidence) of the SE corner of Section 36, T 19 N, R 1 E Fourth Principal Meridian, and I re-established said corner according to the Wisconsin Statutes as shown and described hereon.

Dated this 22nd day of Feb. 1983.

William C. Jung  
Deputy County Surveyor  
Title

History of corner establishment since Original Government Survey  
Kennedy's notes of May 19, 1937, state that he set a pipe at this corner, South and West of the concrete culvert, and on the West bank of the ditch.

Description of corner evidence found:

The old culvert was removed and replaced. Obviously Kennedy's pipe was destroyed during construction or grubbing. I set the corner on line with the SW and S1/4 of Section 36 and at a distance from the S1/4 equal to the distance between the SW and S1/4. This location fits the evidence, monuments, and field conditions very well in all four cardinal directions. I did not use double proportionate measurement in this case as I did not think it to be applicable under these conditions. Judging by its final location, I am of the opinion that my corner location marks that of Kennedy's.

Description of corner and witness monuments, references and accessories used to perpetuate the original or re-established location of this corner:

Witnesses to corner location:

William Jung

Gary Dechant

**See Reverse Side  
For Maintenance**

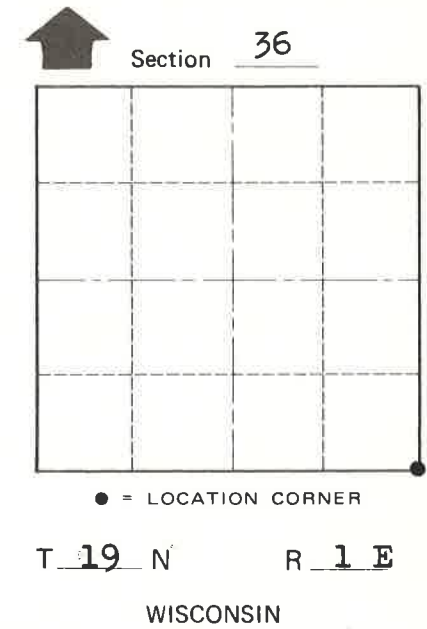
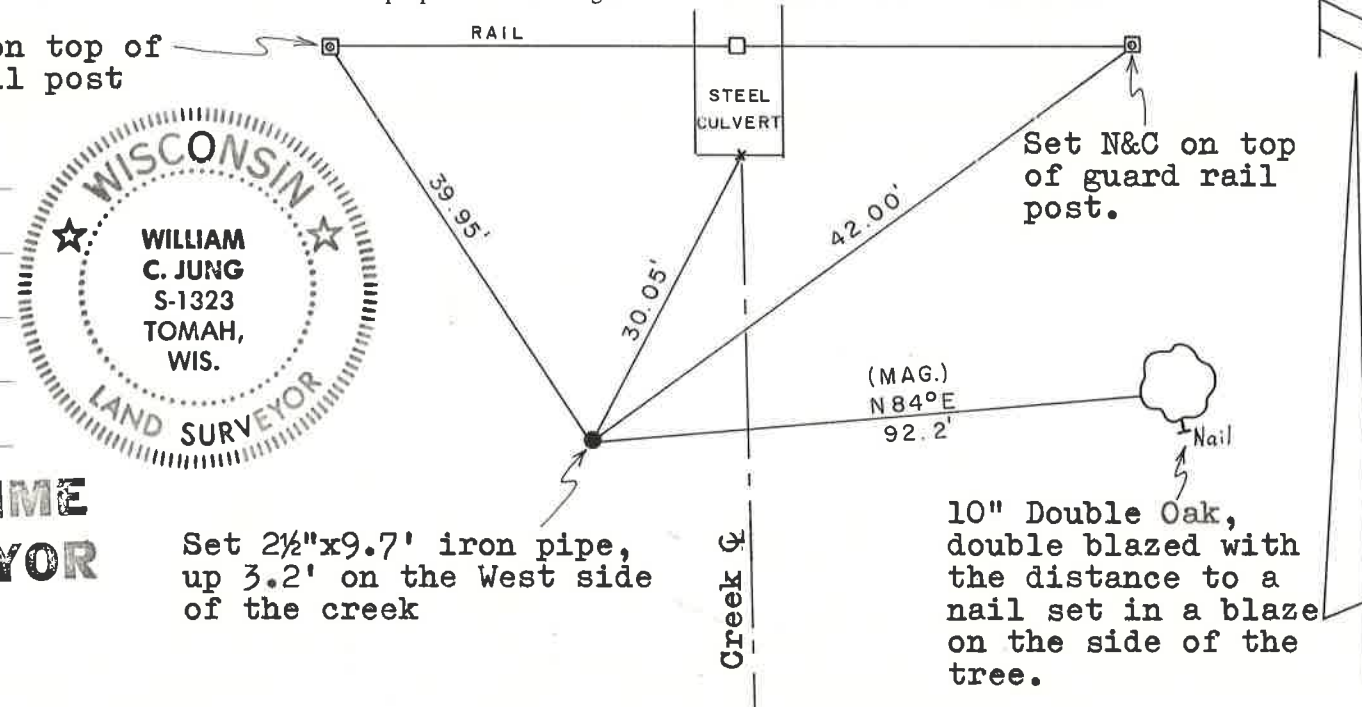
**Approved: HARLEY A. SIME  
MONROE CO. SURVEYOR**

SURVEY CONTROL ORDER

Horizontal	_____
Vertical	_____

WISCONSIN COORDINATE SYSTEM

Corner	East (X)	North (Y)	Elevation (Z)	Zone
Control Sta. Name				



COUNTY SURVEYOR FORM NO. 1

City, Village or Town Scott  
County of Monroe

JUNEAU COUNTY

Survey Monument Record

TYPE OF MONUMENT: 2" PIPE

STATE PLANE COORDINATES: N \_\_\_\_\_

E \_\_\_\_\_

ELEVATION — M.S.L. DATUM: \_\_\_\_\_

THETA ANGLE: \_\_\_\_\_

FIELD BOOK: \_\_\_\_\_ PAGE \_\_\_\_\_

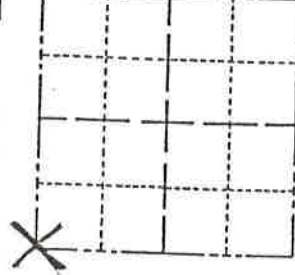
BASIS FOR MONUMENT LOCATION

(Use reverse side if necessary)

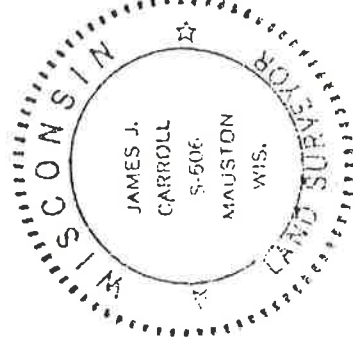
Show info such as: History of corner, with reference to Vol. and pg. dates, surveyor; exact description of monument replaced; if location computed, by taped or EDM traverse; landowner remarks, etc.

*Monroe County marker  
found in place.  
Accepted as the true  
corner location.*

CORNER NO. 1  
SECTION 6  
TOWN 18  
RANGE 2E



LOCATION  
(Indicated by 'X')



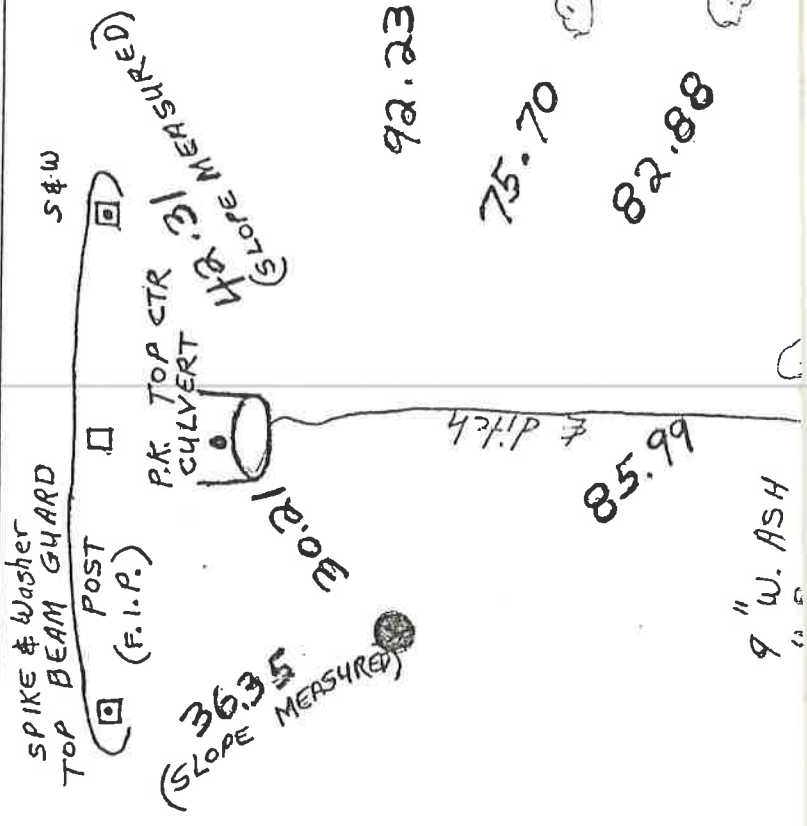
41901360000

**See Reverse Side  
For Maintenance**

CERTIFIED CORRECT  
*James Carroll*  
Registered Land Surveyor  
DATE: Feb. 15, 1988

TIE SKETCH

(Show at least four ties)



Corner No. 121

