

U.S. Public Land

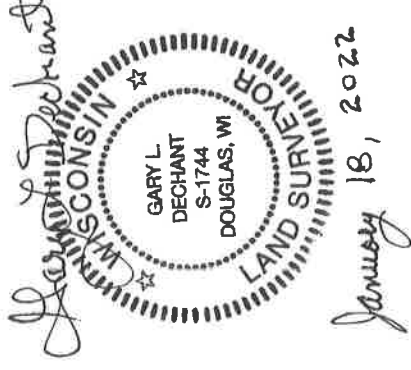
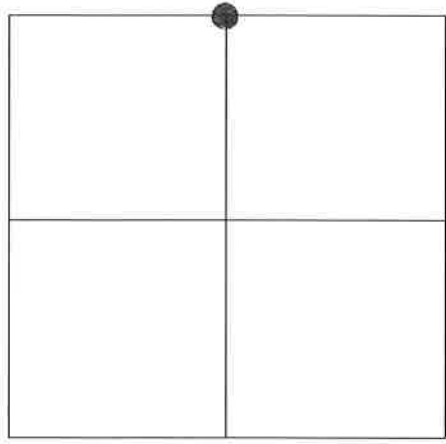
Corner ID: E1/4 Sec 15, T19N-R1E

Survey Monument Record

41901152000

Type of Monument: Set 1 1/4" x 6' round iron bar

E1/4 Corner Sec. 15, T19N-R1E



I certify that the U.S. Public Land Survey Monument Record is correct and complete to the best of my knowledge and belief.

Witnesses:

Al Hoff

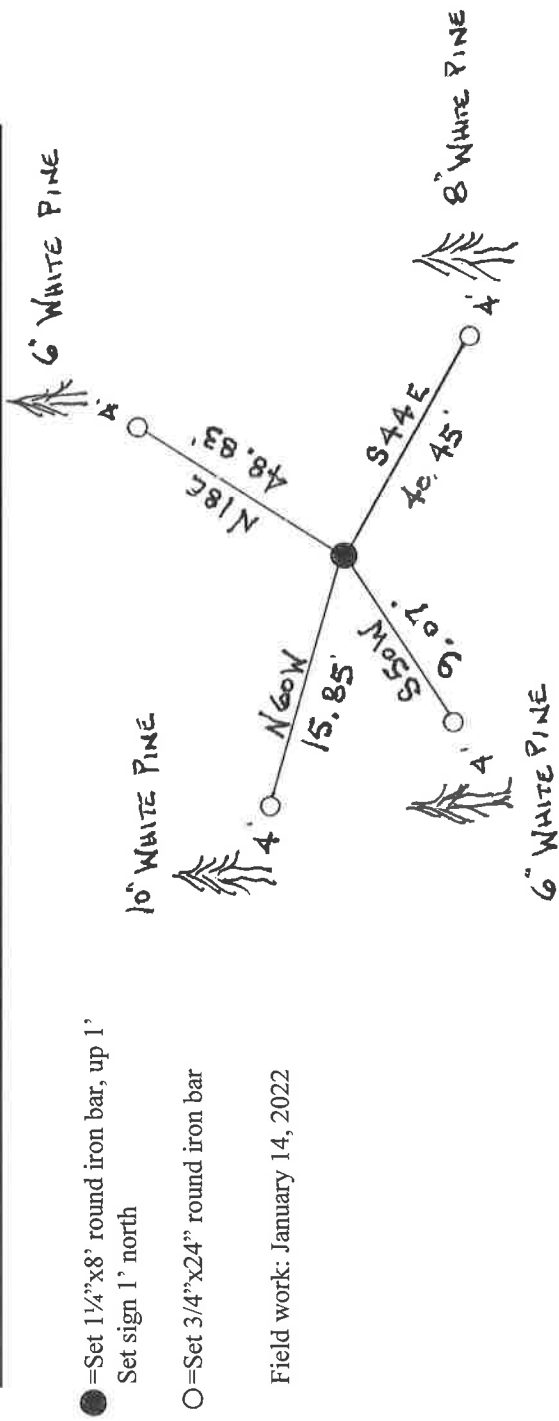
Gary Dechant

Basis for Monumentation Location: (show info such as history, evidence, testimony, found or method of location)

Original Government survey was done by George Cole in November of 1851.

No other known history since the original government survey.

Found no evidence of corner. Set corner by single proportionate measurement.



● = Set 1 1/4" x 8' round iron bar, up 1' Set sign 1' north

○ = Set 3/4" x 24" round iron bar

Field work: January 14, 2022