

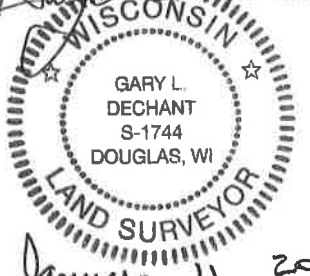
**U.S. PUBLIC LAND CORNER  
MAINTENANCE**

**#37**

**Corner ID: W1/4 Sec. 10, T19N-R1E  
41901092000**

<u>DATE</u>	<u>CREW</u>	<u>MONUMENT INFO</u>
January 10, 2022	Zachariah P. Dechant Gary L. Dechant	Found 1/2" iron pipe inside 2" iron pipe WITNESS MONUMENT as per 1998 tie sheet. Actual corner Falls 50' west in Dead Creek. Verified by 1998 BT's. Set new sign 1' north.
		<u>Bearing</u> <u>Distance</u>
1) Set 3/4"x24" round iron bar 4' south of 6" White Pine		North      77.90'
2) Set 3/4"x24" round iron bar 4' NW of 6" White Pine		S80E      74.56'
3) Set 3/4"x24" round iron bar 4' NW of 16" White Pine		N25E      51.81'
4) Set 3/4"x24" iron bar 4' north of 8" White Pine		S5W      37.64'

Compass bearings  
Trees double blazed

*Gary L. Dechant*  
  
*January 11, 2022*

41901092000

I, Gary L. Dechant, do hereby certify that on the 5th day of February 19 98, I found ~~(evidence)~~ (no evidence) of the W<sup>1</sup>/<sub>4</sub> corner of Section 10, T 19 N, R 1 E Fourth Principal Meridian, and I re-established said corner according to the Wisconsin Statutes as shown and described hereon.

Dated this 17th day of Feb. 19 98.

Gary L. Dechant

Registered Land Surveyor-1744

Title

History of corner establishment since Original Government Survey

Fred Holden was here in 1903 and Kennedy in 1937.

Description of corner evidence found:

Found no evidence of the corner. Set by single proportionate measurement. Actual corner falls in Dead Creek. Set reference marker 50.00 feet east on east-west quarter line of Section 10.



Description of corner and witness monuments, references and accessories used to perpetuate the original or re-established location of this corner:

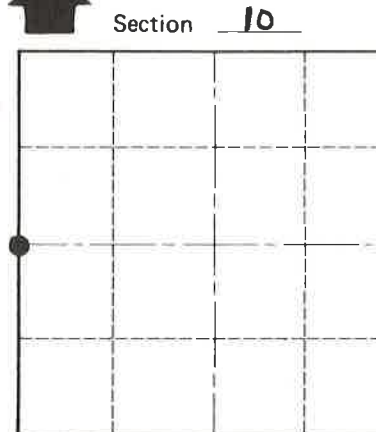
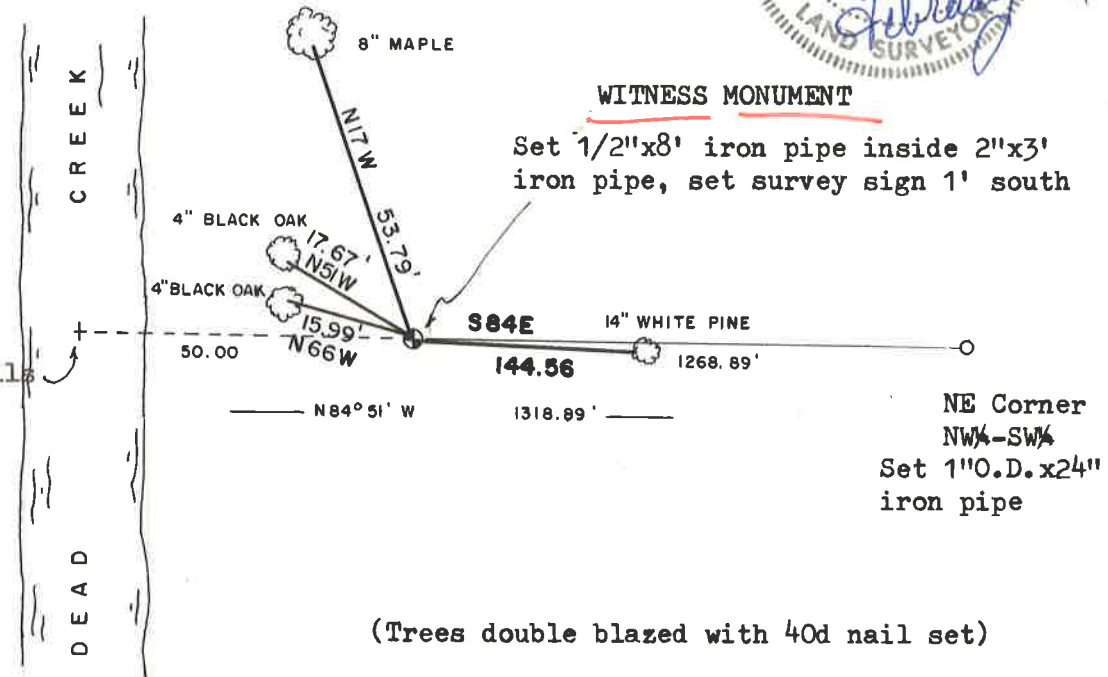
Witnesses to corner location:

David E. Madison

Gary L. Dechant

See Reverse Side For Maintenance

Actual W<sup>1</sup>/<sub>4</sub> corner falls in Dead Creek



NE Corner NW<sup>1</sup>/<sub>4</sub>-SW<sup>1</sup>/<sub>4</sub> Set 1" O.D. x 24" iron pipe

SURVEY CONTROL ORDER

Horizontal \_\_\_\_\_  
Vertical \_\_\_\_\_

WISCONSIN COORDINATE SYSTEM

Corner	East (X)	North (Y)	Elevation (Z)	Zone
Control Sta. Name				

(Trees double blazed with 40d nail set)

City, Village or Town SCOTT

County of MONROE

COUNTY SURVEYOR FORM NO. 1