

JUNEAU COUNTY

Survey Monument Record

TYPE OF MONUMENT: HARRISON

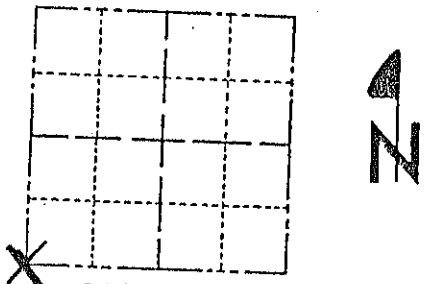
STATE PLANE COORDINATES: N _____
E _____

ELEVATION — M.S.L. DATUM: _____

THETA ANGLE: _____

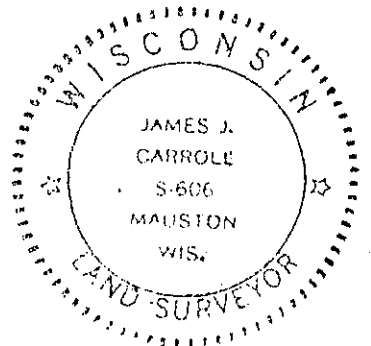
FIELD BOOK: _____ PAGE _____

CORNER NO. 41
SECTION 7
TOWN 15 N
RANGE 2 E



LOCATION
(Indicated by 'X')

SEAL:



BASIS FOR MONUMENT LOCATION

(Use reverse side if necessary)

Show info such as: History of corner, with reference to Vol. and pg, dates, surveyor; exact description of monument replaced; if location computed, by taped or EDM traverse; landowner remarks, etc.

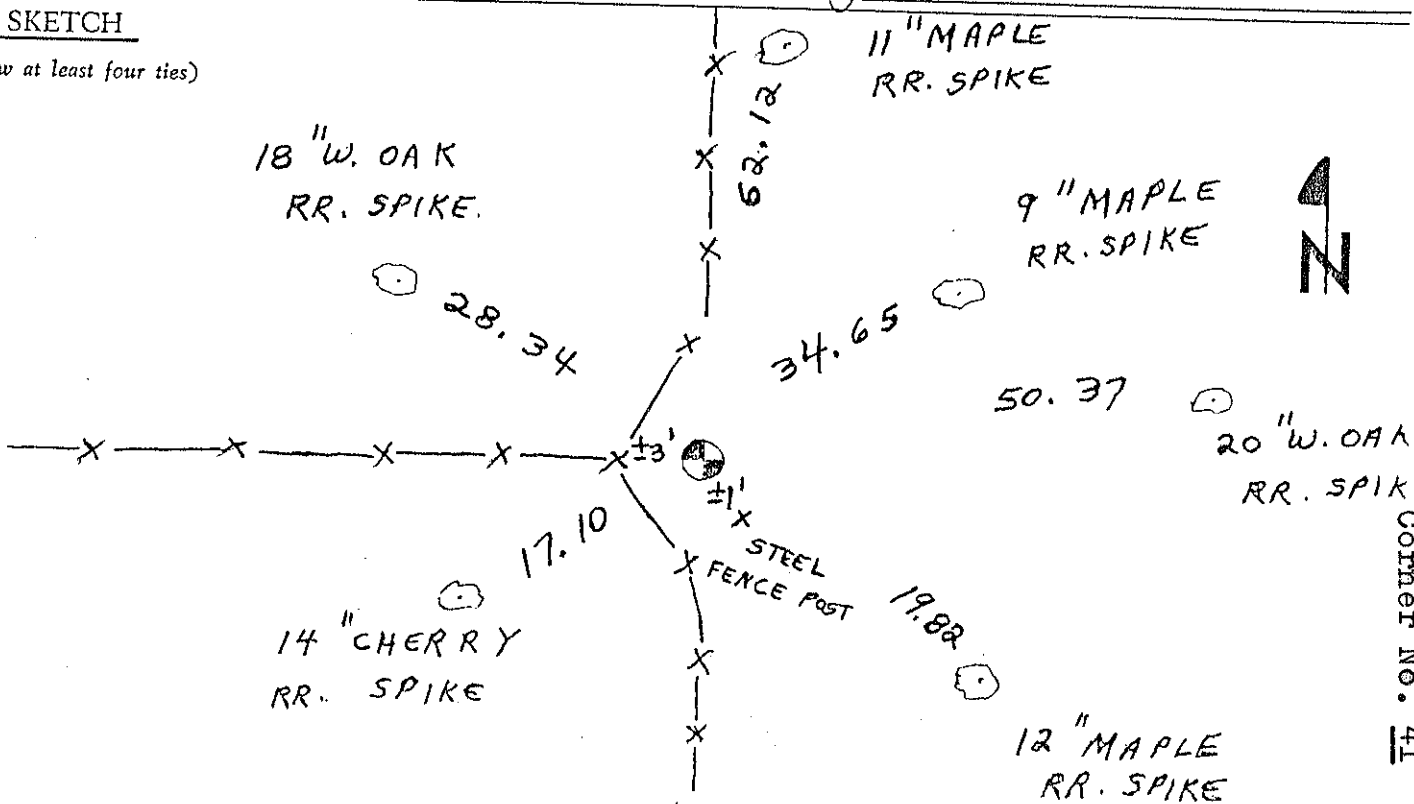
TIED MONROE CO. HARRISON,
Accepted as the true
location for this
corner.

CERTIFIED CORRECT:

James J. Carroll
Registered Land Surveyor
DATE: 2/15/88

TIE SKETCH

(Show at least four ties)



Corner No. 41

4150120000

I, Harley A. Sime, do hereby certify that on the 10th day of December 19 79, I found (evidence) (~~no evidence~~) of the Northeast corner of Section 13, T 15 N, R 1 E, Fourth Principal Meridian, and I re-established said corner according to the Wisconsin Statutes as shown and described hereon.

History of original corner establishment:

No known history since the original government survey.

Description of corner evidence found:

Replaced existing iron bar set by R. Hayden on Dec. 3, 1979. Set Harrison Monument.

Dated this 5th day of Feb. 19 81.

Approved: **HARLEY A. SIME**
MONROE CO. SURVEYOR
Title

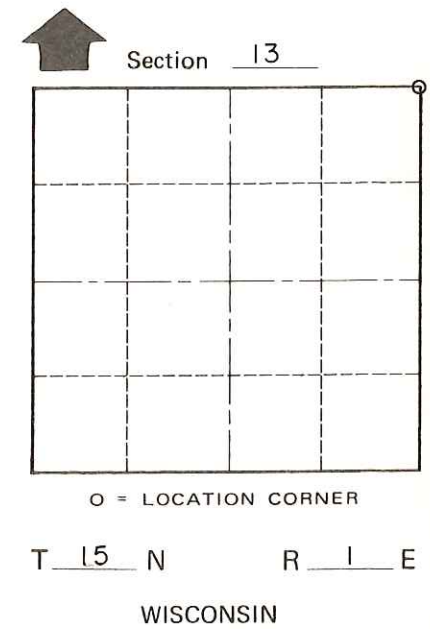
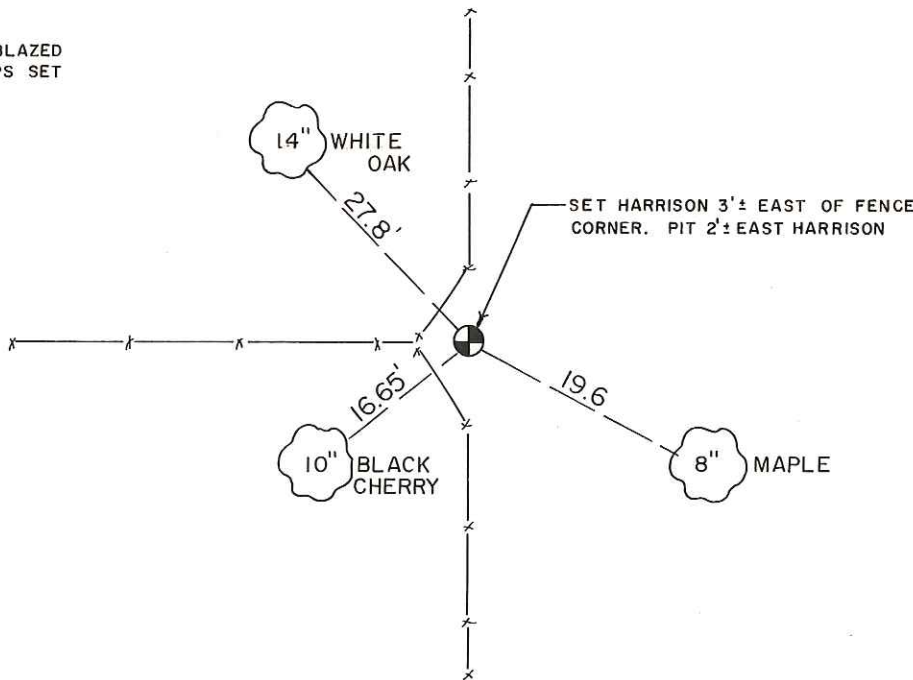
COUNTY SURVEYOR FORM NO. 1

Description of corner and witness monuments, references and accessories used to perpetuate the original or re-established location of this corner:

Witnesses to corner location:

Dechant
Tormoen

NOTE: TREES DOUBLE BLAZED WITH NAIL & CAPS SET



SURVEY CONTROL ORDER

Horizontal	_____
Vertical	_____

WISCONSIN COORDINATE SYSTEM

Corner	East (X)	North (Y)	Elevation (Z)	Zone
Control Sta. Name				

_____ or Town Glendale

County of Monroe