

# 37

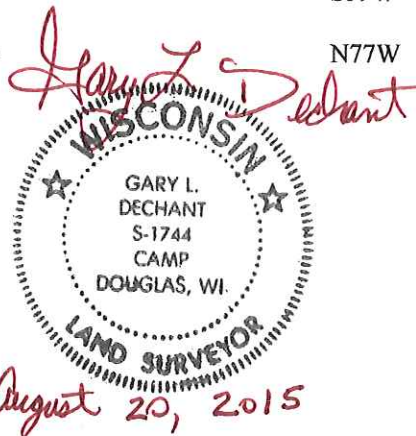
**U.S. PUBLIC LAND CORNER  
MAINTENANCE**

**Corner ID : E1/4 Sec.9, T15N-R1E  
41501092000**

<u>DATE</u>	<u>CREW</u>	<u>MONUMENT TYPE</u> -----
August 20, 2015	Zachariah P. Dechant Gary L. Dechant	Existing Harrison intact, 22' north of manhole at north end of Elm St.

References:

	<u>Bearing</u>	<u>Distance</u>
1) Set 3/4"x24" hex iron bar 3' west of 3" Walnut	N10E	25.76'
2) Set 3/4"x24" hex iron bar , down 6"	N52E	23.25'
3) Set 3/4"x24" hex iron bar 5' south of 8" Maple	S59W	20.11'
4) Set 3/4"x24" hex iron bar 5' south of 12" Maple	N77W	35.47'



CERTIFICATE

CERTIFIED LAND CORNER

No. 37

~~415092000~~

41501092000

I, Harley A. Sime, do hereby certify that on the 6th day of September 1972, I found (evidence) (~~no evidence~~) of the E 1/4 corner of Section 9, T15 N, R 1 E, Fourth Principal Meridian, and I re-established said corner according to the Wisconsin Statutes as shown and described hereon.

Dated this 1st day of Dec. 1977.

Harley A. Sime

County Surveyor  
Title

History of original corner establishment:  
Harley Sime used this corner in a July, 1964 survey. Duane Marten used this corner in surveys of September, 1972 and March, 1974. The 1889 Original Plat of Kendall shows this corner, as does the 1900 Evans Addition to Kendall and the 1930 Assessors Plat of Kendall. Denzine used this corner in a December, 1974 survey. Gary Sime used Description of corner evidence found: this corner in the summer of 1976 while surveying out Section 9.

Found 2" iron pipe in centerline of Elm Street, pipe buried 3".

On June 18, 1979 removed iron pipe and sleigh shoe, and set Harrison flush.

Description of corner and witness monuments, references and accessories used to perpetuate the original or re-established location of this corner:

These ties were taken by Marten in 1972.

Witnesses to corner location:

D. Marten

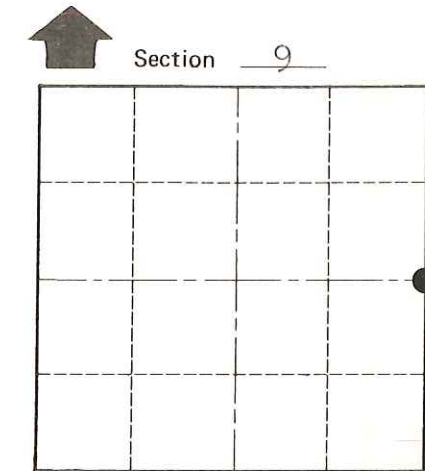
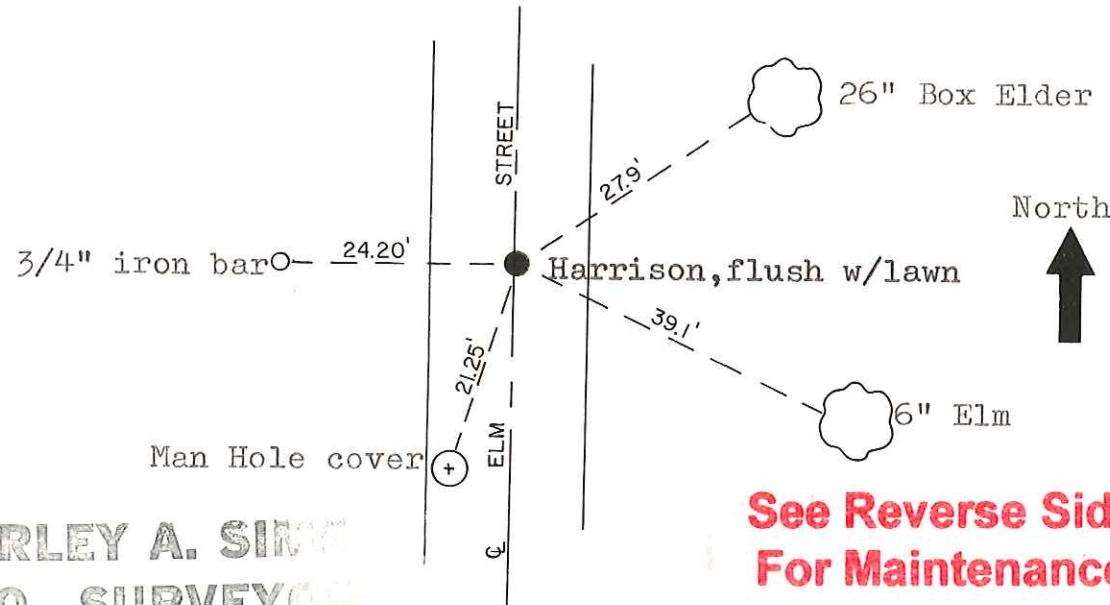
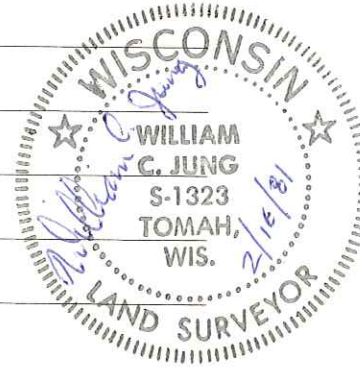
L. Fedderson

June 18, 1979

W. Jung

T. Webb

C. Pietz



O = LOCATION CORNER  
T 15 N R 1 E  
WISCONSIN

**See Reverse Side For Maintenance**

Approved: **HARLEY A. SIME**  
**MONROE CO. SURVEYOR**

SURVEY CONTROL ORDER

Horizontal	_____
Vertical	_____

WISCONSIN COORDINATE SYSTEM

Corner	East (X)	North (Y)	Elevation (Z)	Zone
Control Sta. Name				

City, Village or Town Kendall

County of Monroe

O.K.

COUNTY SURVEYOR FORM NO. 1