

21504180000

# MONROE COUNTY CERTIFIED U.S. PUBLIC LAND SURVEY MONUMENT RECORD

INSTRUCTIONS: THIS RECORD SHALL SHOW THE LOCATION OF THE CORNER AND SHALL INCLUDE ALL OF THE FOLLOWING ELEMENTS (A-I)

*IRON MONUMENT FOUND AT 3-WAY STANDART HARRISON CAST E-W-S.*

(A) IDENTIFY THE CORNER BY REFERENCE TO THE U.S. PUBLIC LAND SURVEY SYSTEM

■ = CORNER MONUMENT RESTORED

WITNESSES TO CORNER LOCATION:

- 1)
- 2)
- 3)

STATE PLANE COORDINATES (WISCONSIN SOUTH ZONE)  
NORTHING:  
EASTING:

*MONROE COUNTY COORDINATES*

NORTHING: *N 315794.68*

EASTING: *E 605217.83*

(B) DESCRIBE ANY RECORD EVIDENCE, MONUMENT EVIDENCE, OCCUPATIONAL EVIDENCE, TESTIMONIAL EVIDENCE OR ANY OTHER MATERIAL EVIDENCE YOU CONSIDERED, AND WHETHER THE MONUMENT WAS FOUND OR PLACED.

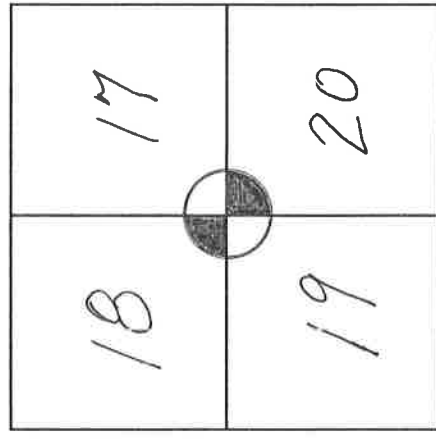
*I FOUND NOTHING TO DISPUTE THIS CORNER ORIGINALLY SET BY GAROLD SIMME IN THE SHEET DATED 10-19-90, I SET 4 NEW TIES, APPLIED NAD83(2011) WISCONS COORDINATES.*

(C) IN THE PLAN VIEW DRAWING BELOW, PROVIDE REFERENCE TIES TO AT LEAST 4 WITNESS MONUMENTS OR, IF THE LOCATION IS WITHIN A MUNICIPALITY, TO AT LEAST 2 WITNESS MONUMENTS. (WITNESS MONUMENTS SHALL BE MADE OF CONCRETE, NATURAL STONE, IRON, OR OTHER EQUALLY DURABLE MATERIAL.) DESCRIBE WITNESS MONUMENTS.

*15 SCALE PLOT PLAN - ALL AZIMUTHS MONROE CO. WISCONS NAD83(2011)*

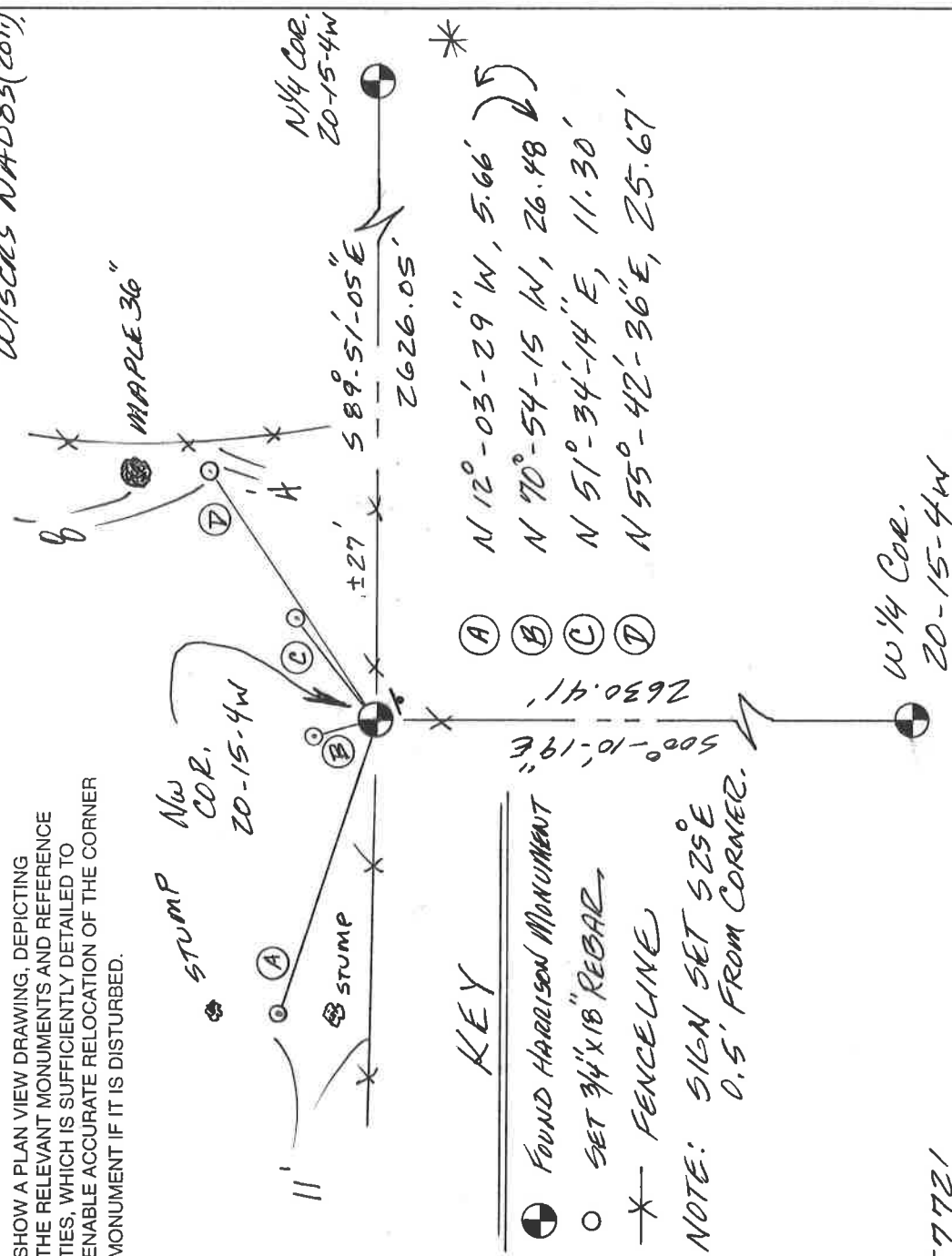
(D) SHOW A PLAN VIEW DRAWING, DEPICTING THE RELEVANT MONUMENTS AND REFERENCE TIES, WHICH IS SUFFICIENTLY DETAILED TO ENABLE ACCURATE RELOCATION OF THE CORNER MONUMENT IF IT IS DISTURBED.

*TOWN OF PORTLAND*



*R4W*

*COORDINATES SHOW COMPLY WITH WCSA SPEC. FOR "SURVEY GRADE".*



### KEY

- FOUND HARRISON MONUMENT
- SET 3/4" X 1/8" REBAR
- X- FENCELINE

NOTE: SIGN SET 525° 0.5' FROM CORNER.



CERTIFICATE

CERTIFIED LAND CORNER

21504180000

No. 71

I, Garold A. Sime, do hereby certify that on the 18th day of June 1990, I found (evidence) ~~(XXXXXX)~~ of the Northwest corner of Section 20, T 15 N, R 4 W Fourth Principal Meridian, and I re-established said corner according to the Wisconsin Statutes as shown and described hereon.

Dated this 19th day of October 1990.

Garold A. Sime

Monroe County Surveyor

Title

History of corner establishment since Original Government Survey  
Fred Holden was at this corner in May of 1905.

Description of corner evidence found:

I accepted the existing fence corner as best available evidence of corner location.

COUNTY SURVEYOR FORM NO. 1

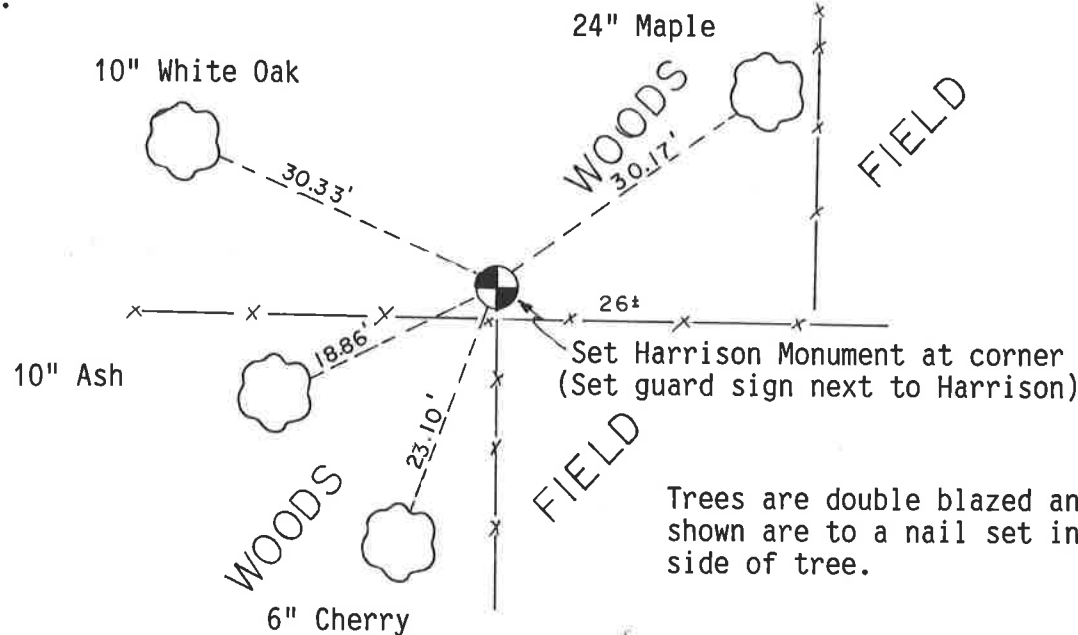
Description of corner and witness monuments, references and accessories used to perpetuate the original or re-established location of this corner:  
set cast iron Harrison Monument at corner.

Witnesses to corner location:

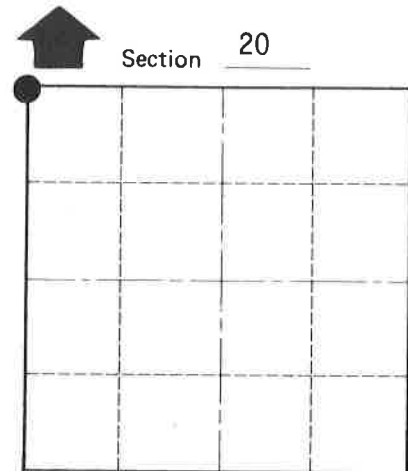
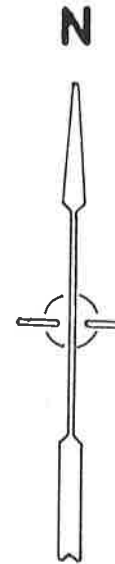
Garold A. Sime, R.L.S.

John F. Kenworthy

Brian Forsythe



Trees are double blazed and distances shown are to a nail set in a hack in side of tree.



● = LOCATION CORNER

T 15 N R 4 W  
WISCONSIN

SURVEY CONTROL ORDER

Horizontal \_\_\_\_\_

Vertical \_\_\_\_\_

WISCONSIN COORDINATE SYSTEM

Corner	East (X)	North (Y)	Elevation (Z)	Zone
Control Sta. Name				

~~XXXXXX~~ Town of Portland

County of Monroe