

24

U.S. PUBLIC LAND CORNER MAINTENANCE

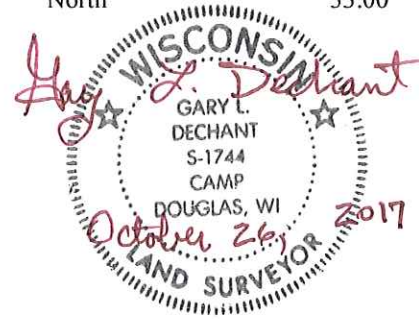
Corner ID : S1/4 Sec. 2, T18N-R1E
41801020020

FIELD DATE	CREW	MONUMENT TYPE -----
September 21, 2017	Zachariah P. Dechant Gary L. Dechant	Existing Harrison intact in center line of Dove Ave. Down 2"

References:

	<u>Bearing</u>	<u>Distance</u>
1) Set 3/4" x 24" round iron bar, down 6", in center line of power line	N44E	63.57'
2) Existing 2" iron pipe in line with fence running south	South	32.89' (33.00')
3) Set 3/4" x 24" round iron bar, down 6", 5' west of 16" Red Pine	S44W	57.81'
4) Existing 1" shaft, set new sign 1' SW	North	33.00'

Harrison and reference markers 1 & 3 set on a straight line.
West angle between Harrison & reference markers 2 & 4 measure 179°20'15".



I, William C. Jung, do hereby certify that on the twenty-first day of May 1980, I found (evidence) (~~was witness~~) of the South 1/4 corner of Section 2, T 18 N, R 1 E Fourth Principal Meridian, and I re-established said corner according to the Wisconsin Statutes as shown and described hereon.

Dated this 25th day of Feb. 1981.

William C. Jung
 Title William C. Jung - R.L.S. 1323

History of corner establishment since Original Government Survey

Holden set an iron stake at this corner in October of 1907. Harley Sime shows an iron pipe at this corner in his survey of 1964. Duane Marten used this iron pipe in his survey of August, 1969. Fred Zietlow used this corner in July, 1970. Malliet used this corner in his April, 1977 survey. The old town road records show this corner Description of corner evidence found: to be in the road.

Found an iron pipe used in previous survey work, removed it and replaced it with a Harrison marker.

See Reverse Side For Maintenance

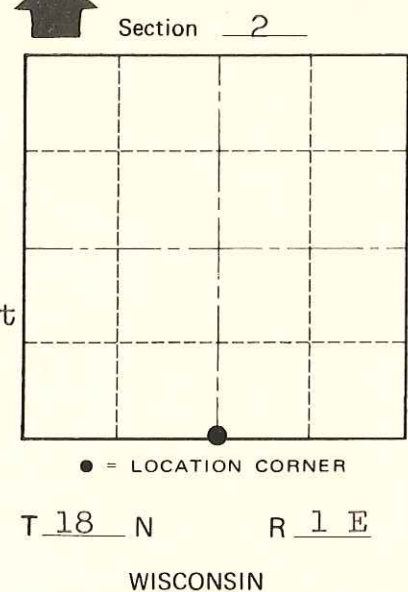
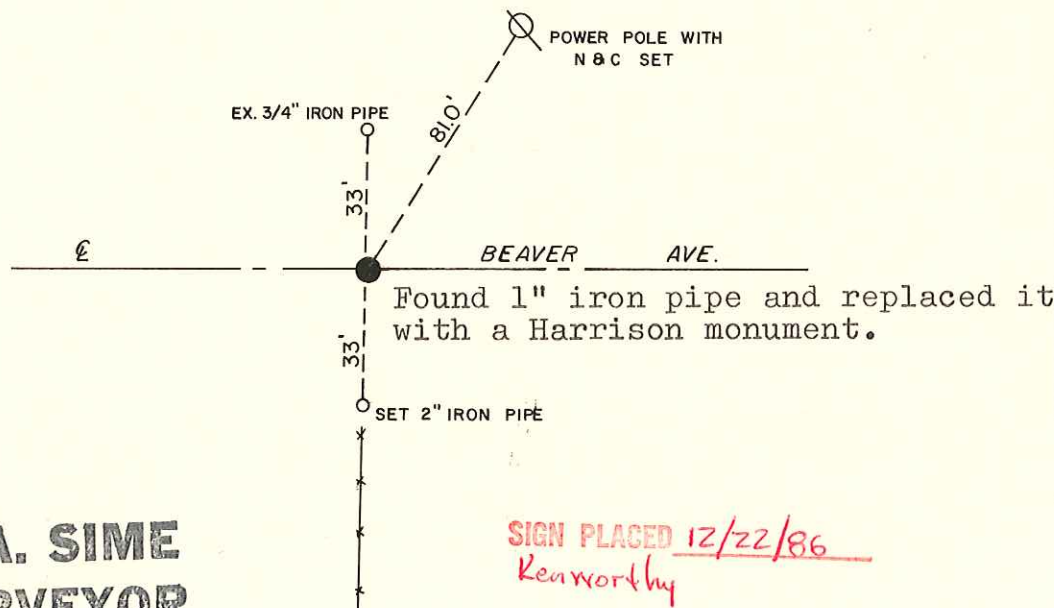
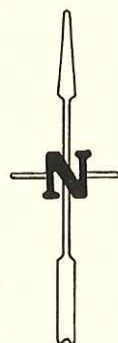
Description of corner and witness monuments, references and accessories used to perpetuate the original or re-established location of this corner:

Witnesses to corner location:

William C. Jung

Scott Sowers

Chuck Dade



**Approved: HARLEY A. SIME
 MONROE CO. SURVEYOR**

SURVEY CONTROL ORDER

Horizontal	_____
Vertical	_____

WISCONSIN COORDINATE SYSTEM

Corner	East (X)	North (Y)	Elevation (Z)	Zone
Control Sta. Name				

~~City, Village or~~ Town of Byron
 County of Monroe
Wisconsin

COUNTY SURVEYOR FORM NO. 1