

**U. S. Public Land Corner
Maintenance**

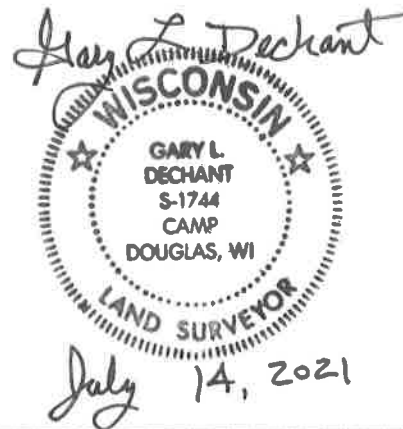
#1
Corner: NE Sec. 1, T17N-R1E
41801360000

<u>Date</u>	<u>Crew</u>	<u>Monument type</u>
July 1, 2021	Zachariah P. Dechant Gary L. Dechant	Harrison intact at intersection of Funnel Road & Grosbeak Ave, 24' south of Funnel Road & Canary Ave. intersection, down 3"

References:

	<u>Bearing</u>	<u>Distance</u>
1) Set 2' section steel fence post, 11' north of Canary Ave	N49E	54.47'
2) Set 2' section of steel fence post, 7' west of 6" Spruce	S50E	69.63'
3) Set 2' section steel fence post, 37' south of Grosbeak	S49W	57.72'
4) Set 2' section steel fence post, 3' SE of 10" blazed White Pine	N50W	133.49'

Compass bearings.
Corner & reference markers set on straight lines.



CERTIFICATE

CERTIFIED LAND CORNER

No. 1

I, Douglas J. Malliet, do hereby certify that on the 19th day of July 19 78, I found (evidence) (~~no evidence~~) of the Northeast corner of Section 1, T 17 N, R 1 E, Fourth Principal Meridian, and I re-established said corner according to the Wisconsin Statutes as shown and described hereon.

Dated this 1 day of Aug. 19 78.

Douglas J. Malliet

REGISTERED LAND SURVEYOR, S-1266
Title

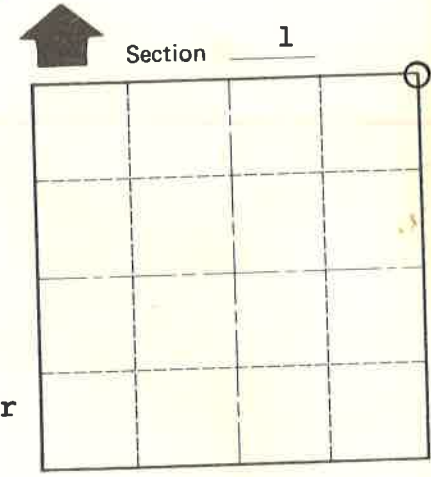
History of original corner establishment:

Fred Holden visited this corner in February, 1901 and set a stone at the corner.

Description of corner evidence found:

We excavated for the stone of record, but did not locate it; nor did we locate Holden's bearing trees. The corner was re-established at the location of an existing P-K nail set by Owen Ayres & Asso. in September, 1977.

See Reverse Side For Maintenance

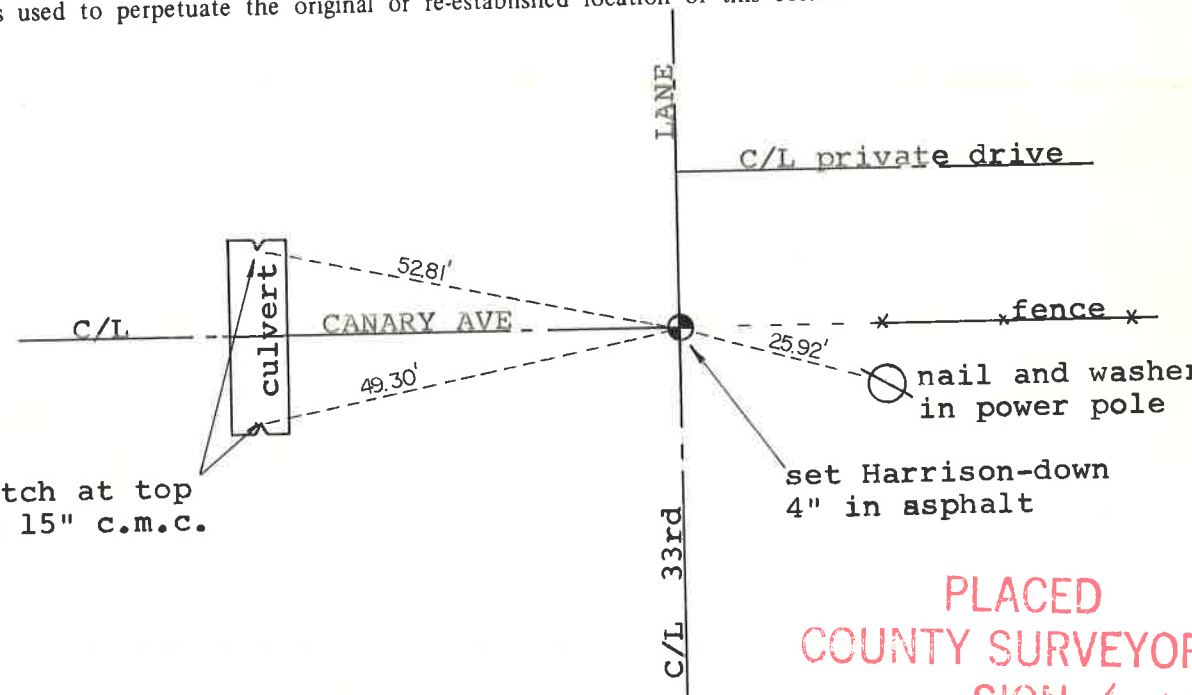


O = LOCATION CORNER
T 17 N R 1 E
WISCONSIN

Description of corner and witness monuments, references and accessories used to perpetuate the original or re-established location of this corner:

Witnesses to corner location:

Lawrence A. Feddersen
Douglas J. Malliet
Dale Feddersen



end of notch at top center of 15" c.m.c. pipe

PLACED
COUNTY SURVEYOR'S
SIGN 6-12-87

SURVEY CONTROL ORDER

Horizontal _____
Vertical _____

WISCONSIN COORDINATE SYSTEM

Corner	East (X)	North (Y)	Elevation (Z)	Zone
Control Sta. Name				

~~City, Village or Town~~ of OAKDALE
County of MONROE

COUNTY SURVEYOR FORM NO. 1