

#103

**U. S. Public Land Corner
Maintenance**

**Corner: NE Sec. 35, T19N-R4W
21904260000**

<u>Date</u>	<u>Crew</u>	<u>Monument type</u>
November 27, 2020	Al Hoff	Existing Harrison, top broke off. Someone took the
& Aug. 4, 2021	Gary L. Dechant	top portion of the Harrison and set it approximately 14' north & 2.5' east and a u-channel post next to it? This was found to be the case Nov. 27, 2020.

The bottom portion was verified correct in the November 27, 2020 survey and verified by all three 1980 bearing trees. The Red Pine to the NE is now a rotted stump, the Black Oak to the South is now 28" in diameter, the Box Elder to the west was cut down but now several shoots growing from the stump. Also, found downed fences under vegetation just as shown in 1980 tie sheet. Someone attempted to mark east-west lines based on this incorrect, moved piece. Removed, moved, top portion.

Aug. 4, 2021: Replaced bottom correct located portion with a cast iron TCP monument. Set 6' steel post as anchor 4" lower than top portion of TCP and placed concrete around TCP. Set sign 1.5' north. Corner is 57' east of north-south trail.

References:

	<u>Bearing</u>	<u>Distance</u>
1) Set 3/4"x24" iron pipe, 4' SW of 5" Red Oak	N30E	36.00'
2) Set 3/4"x24" iron pipe, 6' west of 16" Red Pine	S50E	46.27'
3) Set 3/4"x24" iron pipe, 4' NE of 8" White Pine	S15W	8.81"
4) Set 3/4"x24" iron pipe, 3' SE of 5" White Oak	N46W	28.03'

Compass bearings.



I, Harley A. Sime, do hereby certify that on the 20th day of May 1980, I found (evidence) ~~(no evidence)~~ of the NE corner of Section 35, T 19 N, R 4 W Fourth Principal Meridian, and I re-established said corner according to the Wisconsin Statutes as shown and described hereon.

Dated this 16th day of Feb. 1981.

Harley A. Sime, R.L.S. 355

County Surveyor
Title

History of corner establishment since Original Government Survey

H. LaRue was her in April of 1897.
F. Zietlow and D. Marten set an iron bar here in April of 1971.

Description of corner evidence found:

Found a 3/4" iron bar in fence corner and replaced it with a Harrison Monument.

**See Reverse Side
For Maintenance**

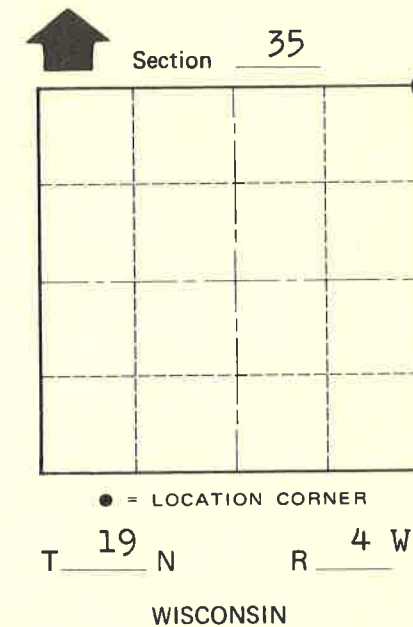
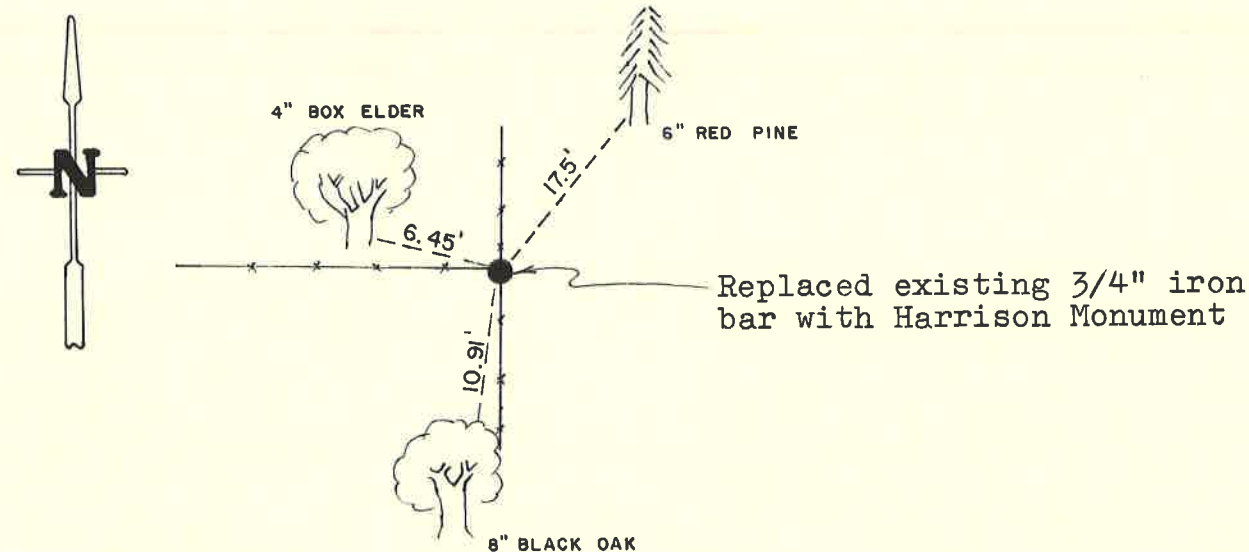
Description of corner and witness monuments, references and accessories used to perpetuate the original or re-established location of this corner:

Witnesses to corner location:

G. Dechant

T. Tormoen

C. Dade



(All trees double blazed with N&C's set)

**Approved: HARLEY A. SIME
MONROE CO. SURVEYOR**

SURVEY CONTROL ORDER

Horizontal	_____
Vertical	_____

WISCONSIN COORDINATE SYSTEM

Corner	East (X)	North (Y)	Elevation (Z)	Zone
Control Sta. Name				

~~City, Village or~~ Town Little Falls

County of Monroe

COUNTY SURVEYOR FORM NO. 1