

91

**U. S. Public Land Corner
Maintenance**

Corner: SE Sec. 19, T18N-R1E

41801190000

<u>Date</u>	<u>Crew</u>	<u>Monument type</u>
April 26, 2021	Al Hoff Gary L. Dechant	No monument was set in previous years due to falling in a cranberry bed. Could not find any ties from 1985 tie sheet. Recomputed corner location based on Mark Heideke's Vol 3 CSM P 322, Doc. No. 344962 dated May 14, 1979.

References:

- 1) Set 1"x24" iron pipe center of dike
- 2) Set 1/2"x18" rebar at dike intersection
- 3) Set 1/2"x24" rebar at dike intersection
- 4) Set 1"x24" iron pipe in center of dike

Bearing Distance

- N66°44'57"E 118.37'
- S25°29'12"E 256.76'
- S3°30'10"W 239.44
- N87°15'50"W 15.11'

Bearings reference to the Monroe County Coordinate System.



I, Garold A. Sime, do hereby certify that on the 26th day of June 19 85, I found ~~(evidence)~~ (no evidence) of the Southeast corner of Section 19, T 18 N, R 1 E Fourth Principal Meridian, and I re-established said corner according to the Wisconsin Statutes as shown and described hereon.

Dated this 27th day of June 19 85.

Garold A. Sime
Deputy County Surveyor
Title

History of corner establishment since Original Government Survey

Mark Heidecke shows a computed location for this corner on his Certified Survey Map dated May 14, 1979. Kenyon was at this corner per unrecorded survey in 1883.

Description of corner evidence found:

Accepted Heidecke's computed location as the best available evidence.

See Reverse Side For Maintenance

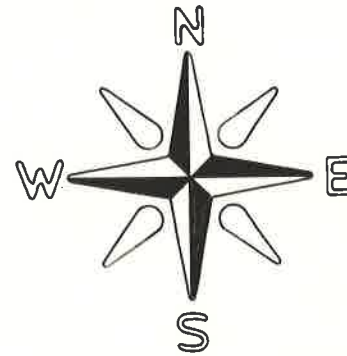
COUNTY SURVEYOR FORM NO. 1

Description of corner and witness monuments, references and accessories used to perpetuate the original or re-established location of this corner:

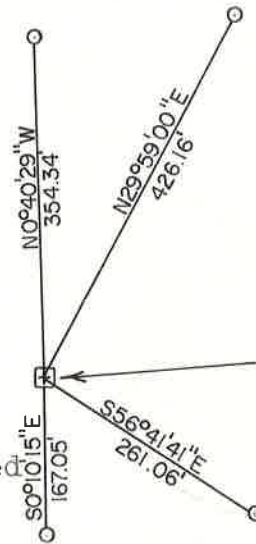
Witnesses to corner location:

Dallas Wilhite

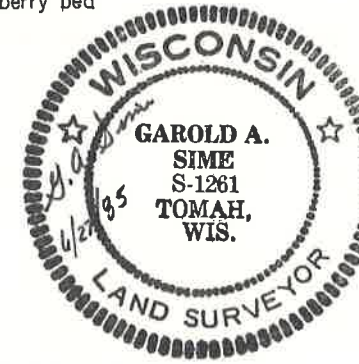
James Lund



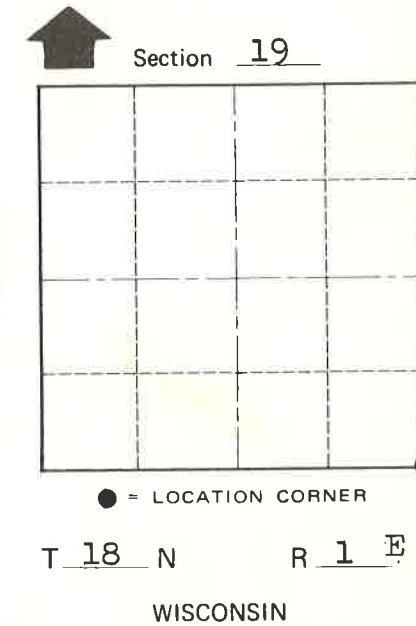
Bearings are referenced to ASSUMED NORTH.



O = Set. 3/4"x24" iron bar in the corner of cranberry bed



Actual corner falls in a cranberry bed, no monument set.



SURVEY CONTROL ORDER

Horizontal	_____
Vertical	_____

WISCONSIN COORDINATE SYSTEM

Corner	East (X)	North (Y)	Elevation (Z)	Zone
Control Sta. Name				

~~XXX~~ Town of Byron
County of Monroe