

113

**U. S. Public Land Corner
Maintenance**

Corner: NW Sec. 31, T19N-R4W

21905250000

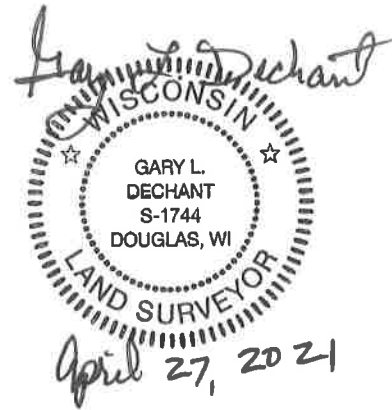
<u>Date</u>	<u>Crew</u>	<u>Monument type</u>
April 14, 2021	Zachariah P. Dechant Gary L. Dechant	Found Harrison intact, flush with pavement, 12' east of Canole Road, north of Canary Ave

References:

	<u>Bearing</u>	<u>Distance</u>
1) Set 1¼"x24" iron pipe, 4' SW of 12"-10" double White Oak	N57E	55.30'
2) Set 1¼" x24" iron pipe	S35E	98.14'
3) Set 1¼"x24" iron pipe	S57W	87.50'
4) Set 1¼"x24" iron pipe, 8' SE of 10"-14" double Black Oak	N35W	97.00'

Compass bearings.

Corner & reference markers set on straight lines.



I, William C. Jung, do hereby certify that on the 15th day of August 1983, I found ~~(evidence)~~ (no evidence) of the Northwest corner of Section 31, T 19 N, R 4 W Fourth Principal Meridian, and I re-established said corner according to the Wisconsin Statutes as shown and described hereon.

Dated this 20th day of Sept. 1983.

William C. Jung

Deputy County Surveyor, R.L.S. 1323
Title

History of corner establishment since Original Government Survey

Fred Holden was at this corner in December of 1903.

See Reverse Side For Maintenance

Description of corner evidence found:

I could find no evidence of the corner or any bearing trees. I set the corner by single proportionate measurement, using the West 1/4 of Section 30 and the Southwest of Section 31. In relation to the three miles of North-South measurements that I made along the Town Line, this corner location fits the bearings and distances very well.

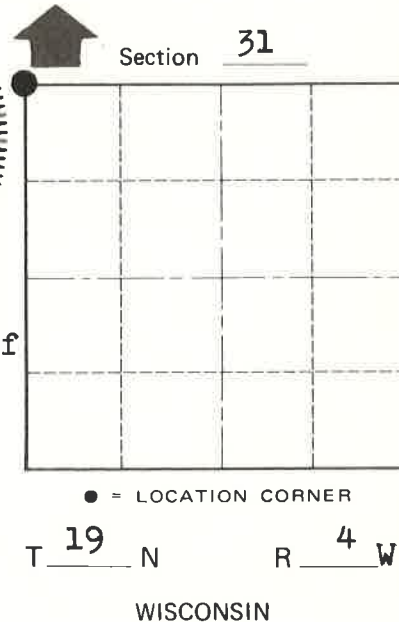
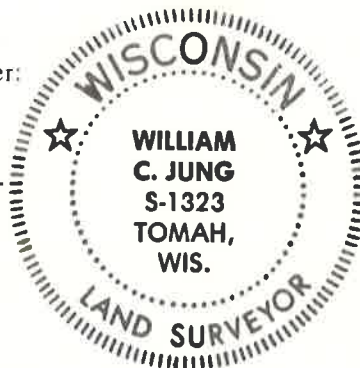
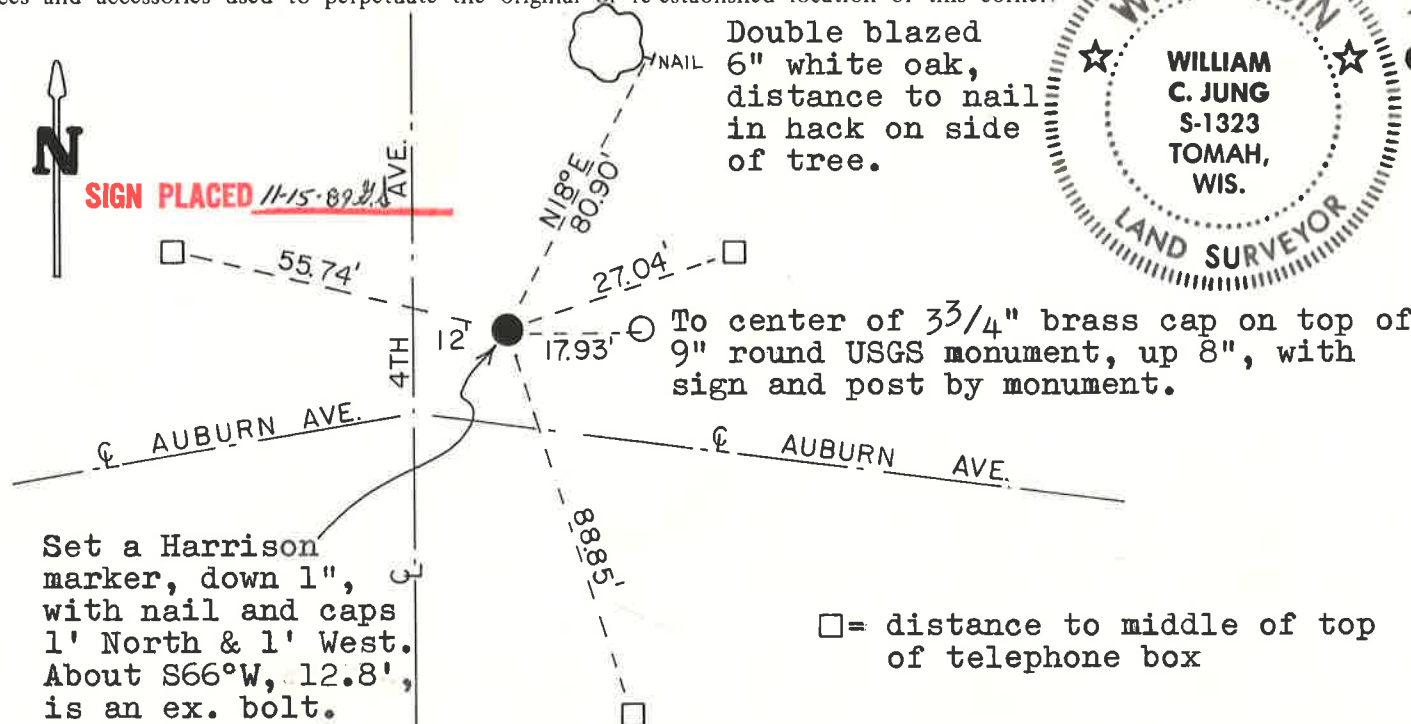
COUNTY SURVEYOR FORM NO. 1

Description of corner and witness monuments, references and accessories used to perpetuate the original or re-established location of this corner:

Witnesses to corner location:

William C. Jung

Dallas Wilhite



Set a Harrison marker, down 1", with nail and caps 1' North & 1' West. About S66°W, 12.8', is an ex. bolt.

□ = distance to middle of top of telephone box

**Approved: HARLEY A. SIME
 MONROE CO. SURVEYOR**

SURVEY CONTROL ORDER

Horizontal _____

Vertical _____

WISCONSIN COORDINATE SYSTEM				
Corner	East (X)	North (Y)	Elevation (Z)	Zone
Control Sta. Name				

City, Village or Town Little Falls
 County of Monroe
Wisconsin